

# Pena

Castles of Caledon

Elevation A | 2,570 sq. ft.

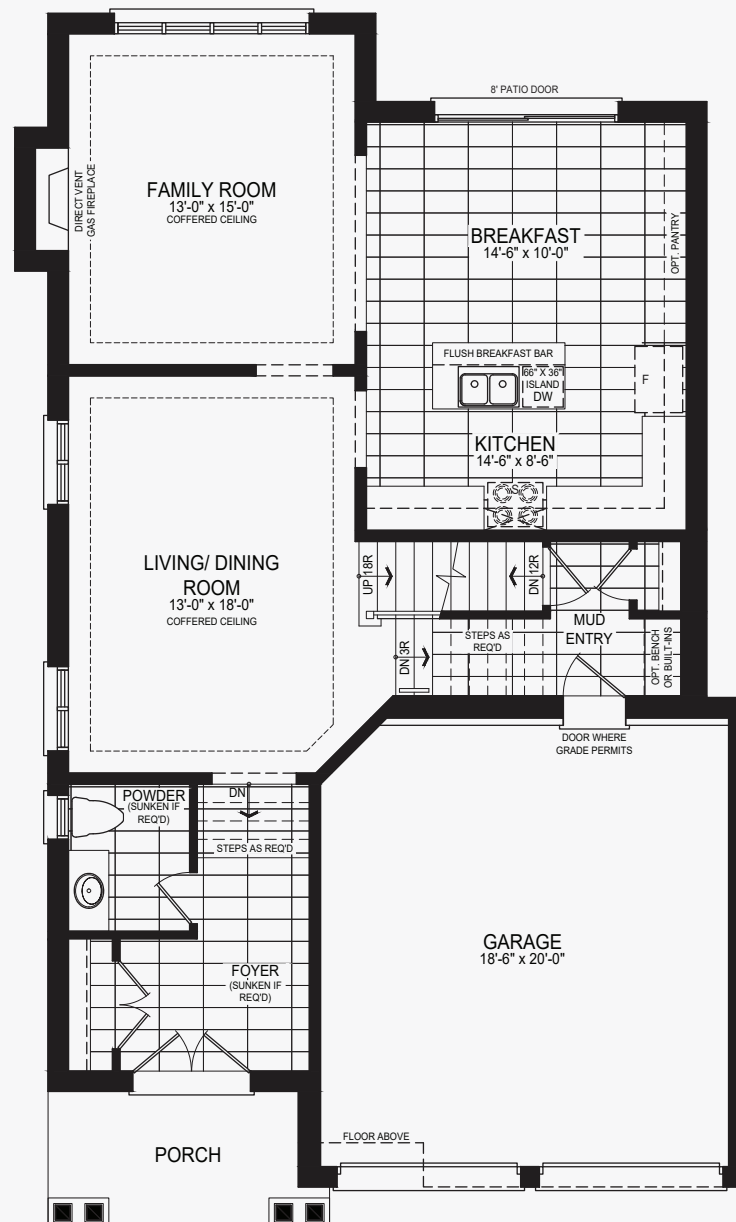


ELEVATION A

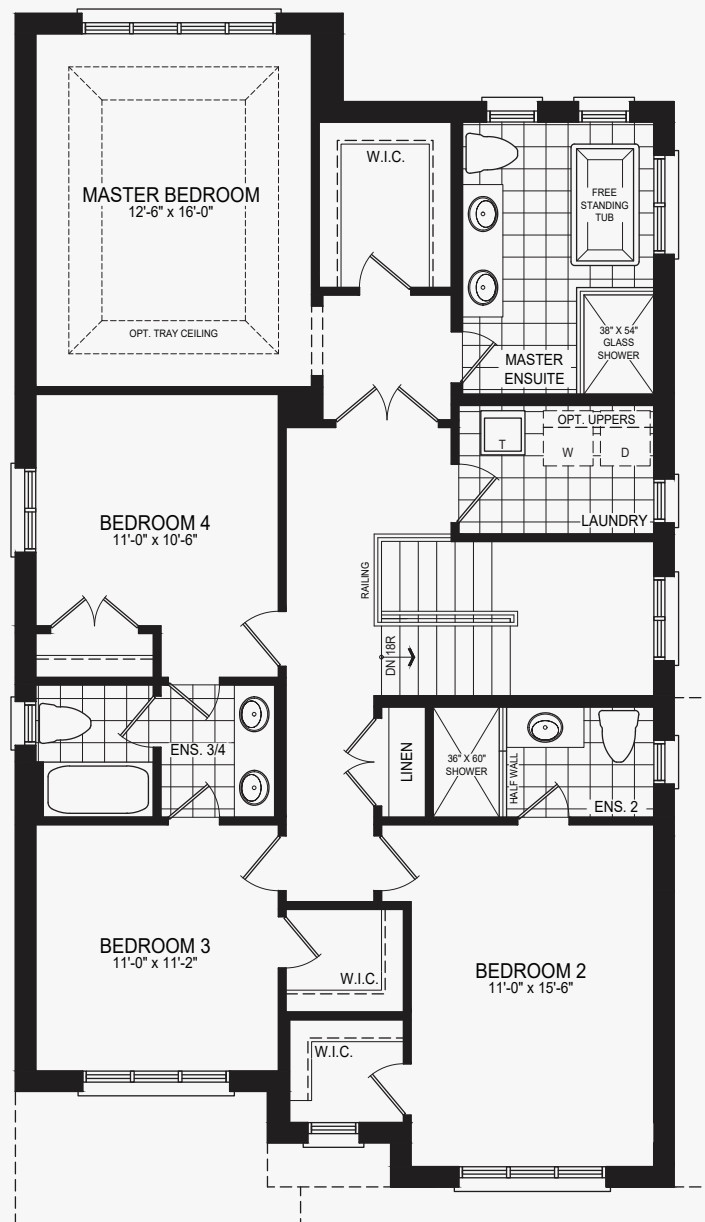
# Pena

Castles of Caledon

Elevation A | 2,570 sq. ft.



Ground Floor  
Elevation A

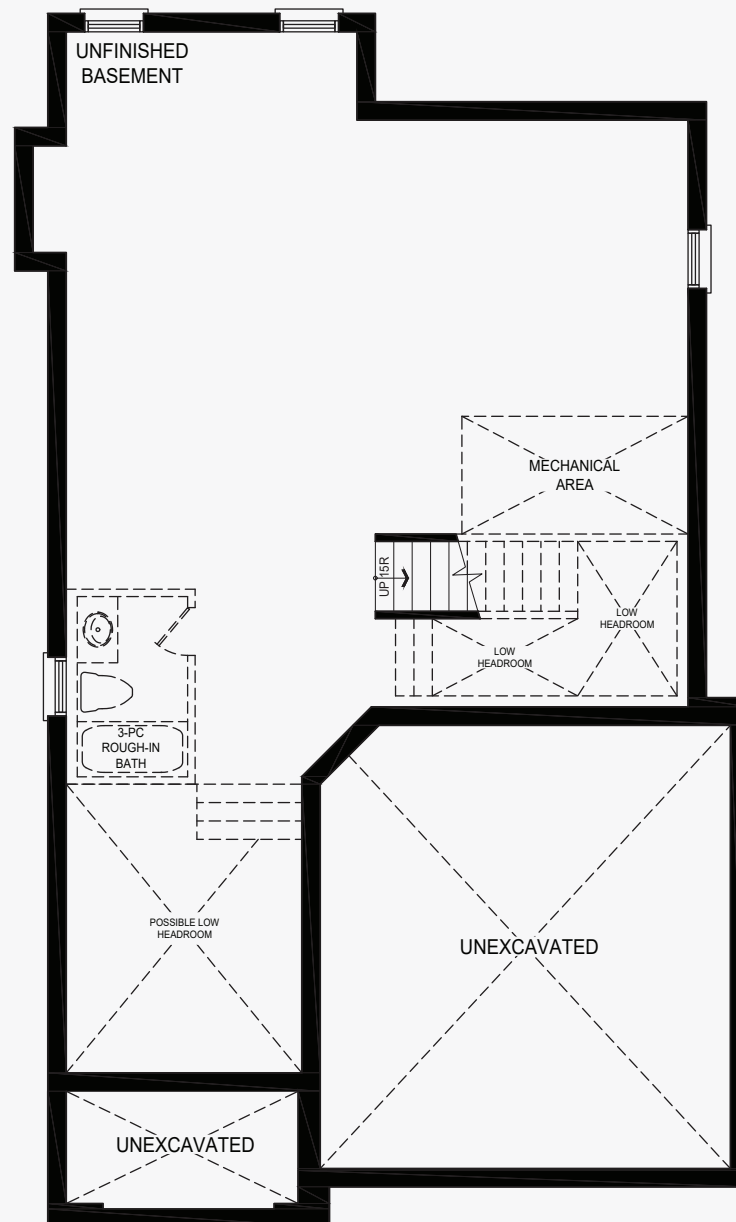


Second Floor  
Elevation A

# Pena

Castles of Caledon

Elevation A | 2,570 sq. ft.



Basement  
Elevation A



# Pena

Castles of Caledon

Elevation B | 2,546 sq. ft.

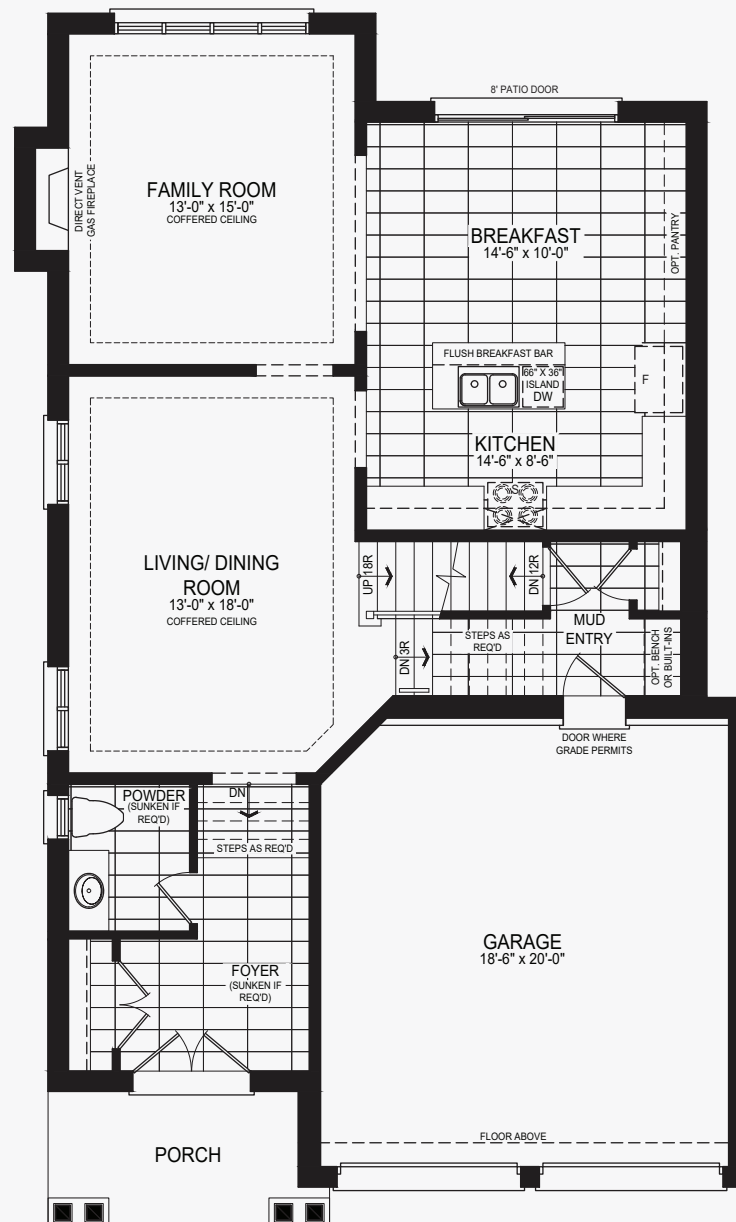


**indesign**  
HOMES

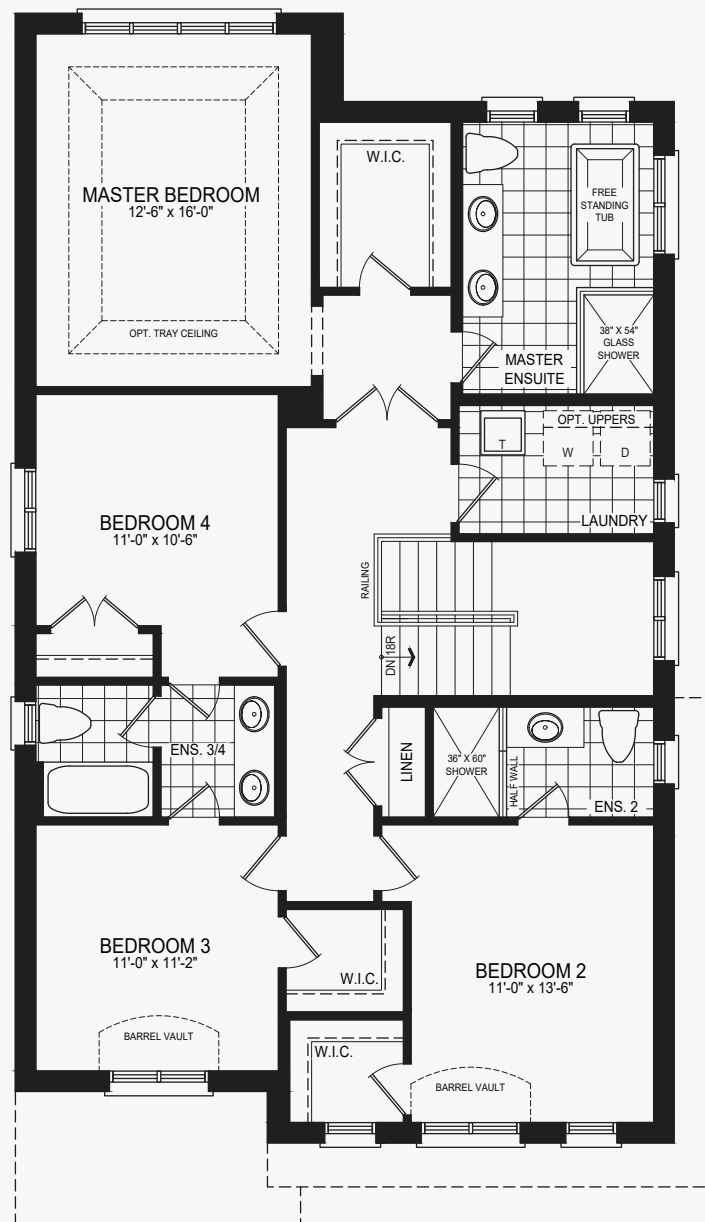
# Pena

Castles of Caledon

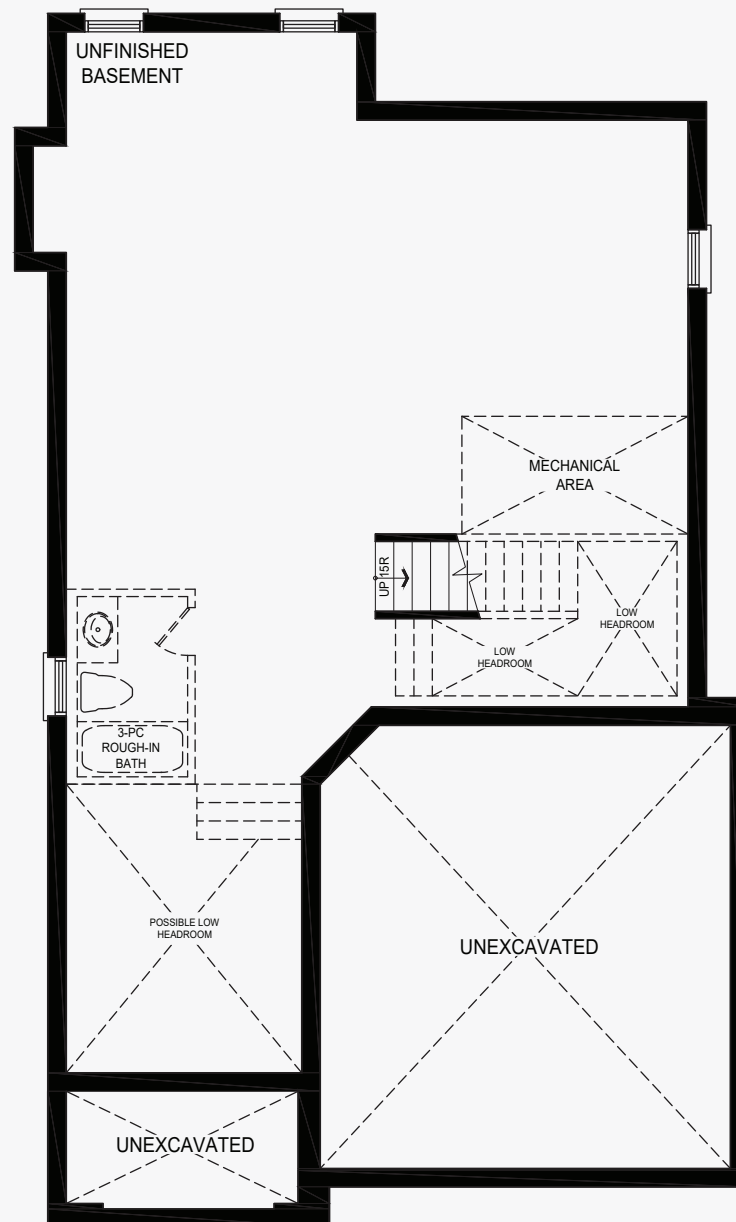
Elevation B | 2,546 sq. ft.



Ground Floor  
Elevation B



**Second Floor**  
Elevation B



Basement  
Elevation B



# Rex

Castles of Caledon

Elevation A | 2,730 sq. ft.

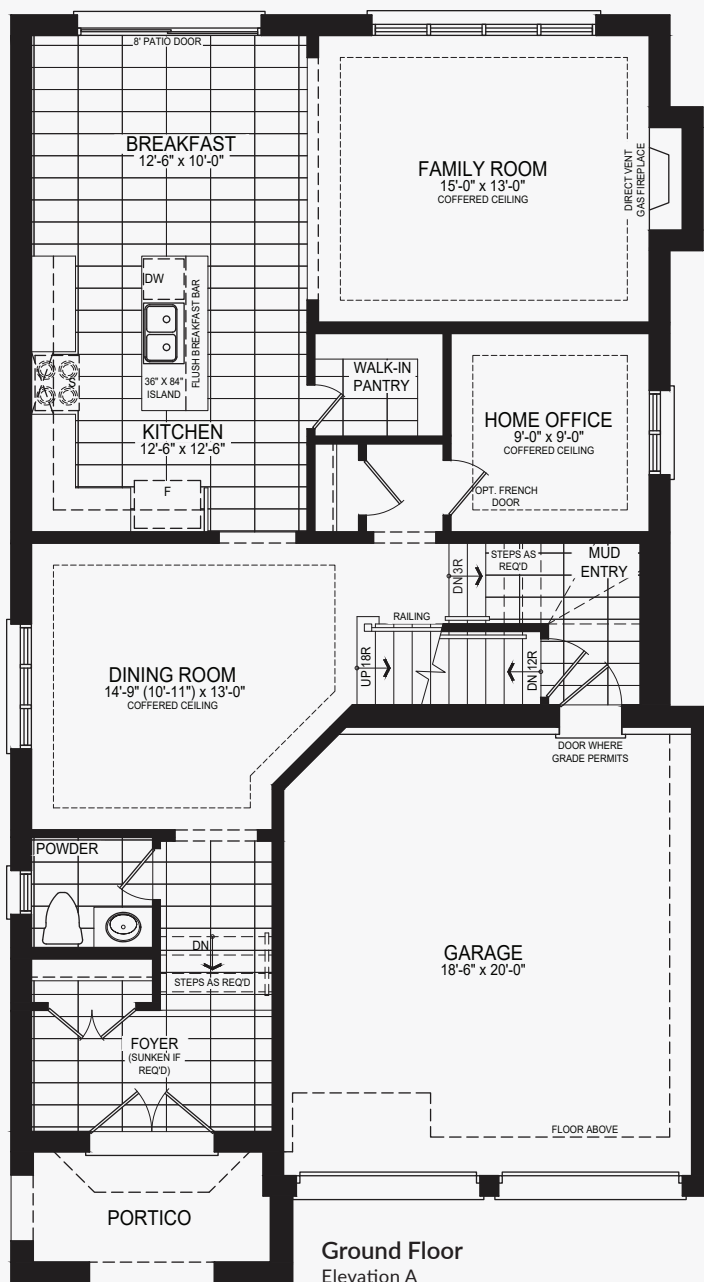


ELEVATION A

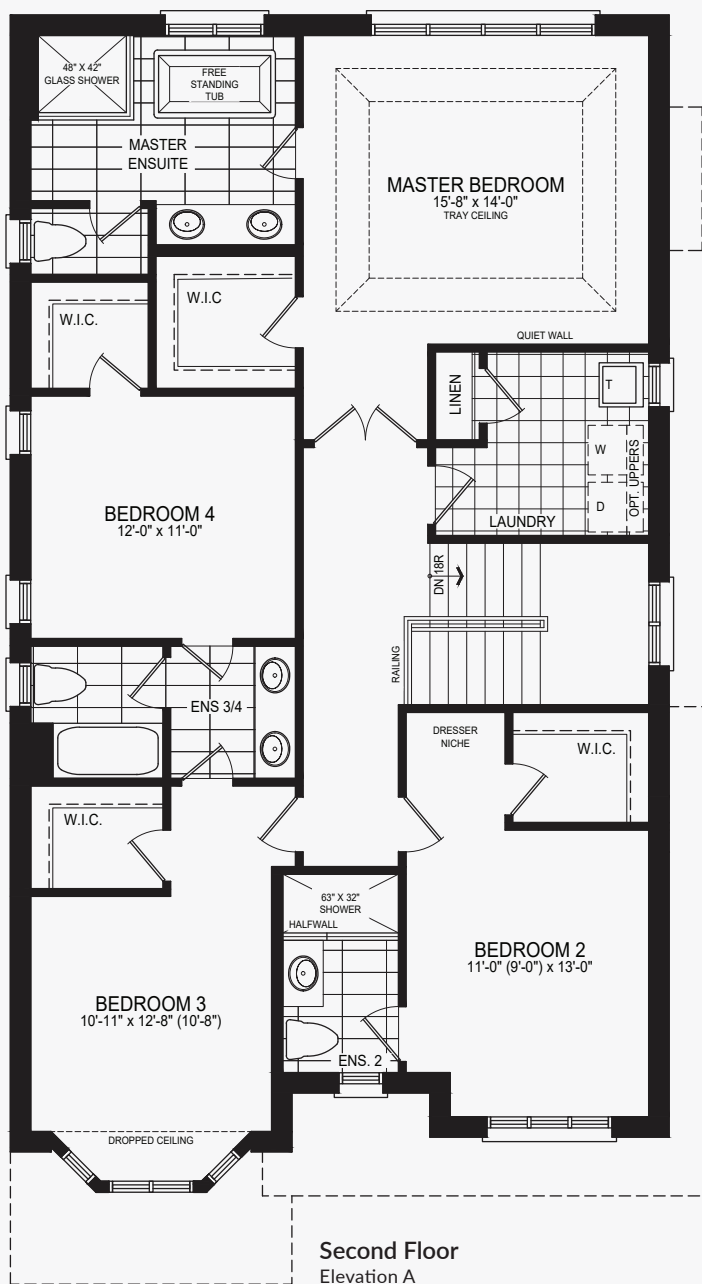
# Rex

## Castles of Caledon

Elevation A | 2,730 sq. ft.



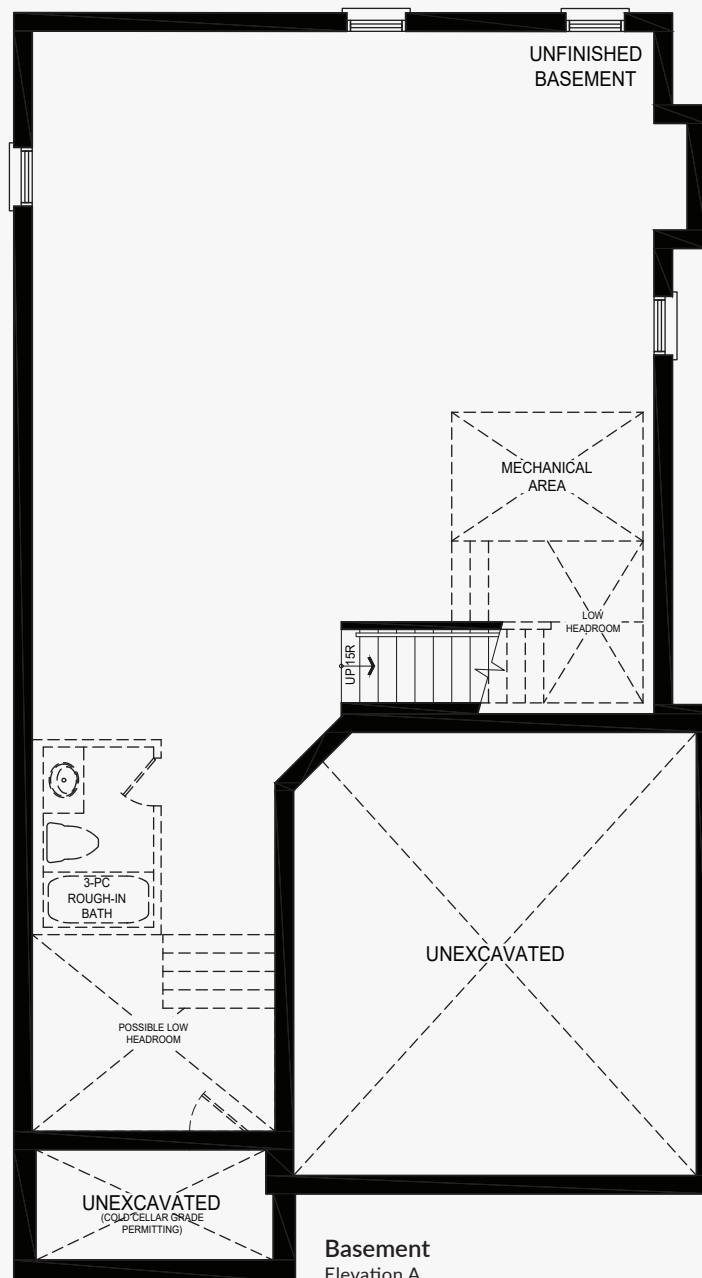




# Rex

## Castles of Caledon

Elevation A | 2,730 sq. ft.



# Rex

Castles of Caledon

Elevation B | 2,714 sq. ft.

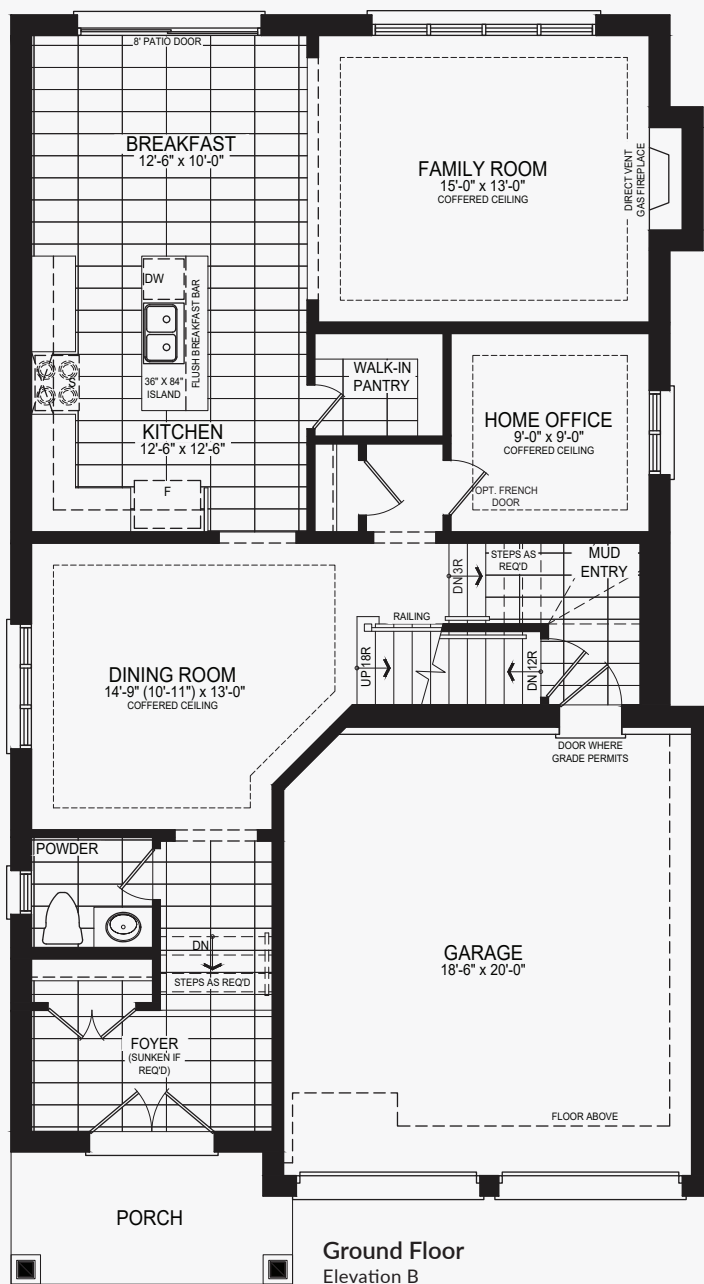


**indesign**  
HOMES

# Rex

## Castles of Caledon

Elevation B | 2,714 sq. ft.

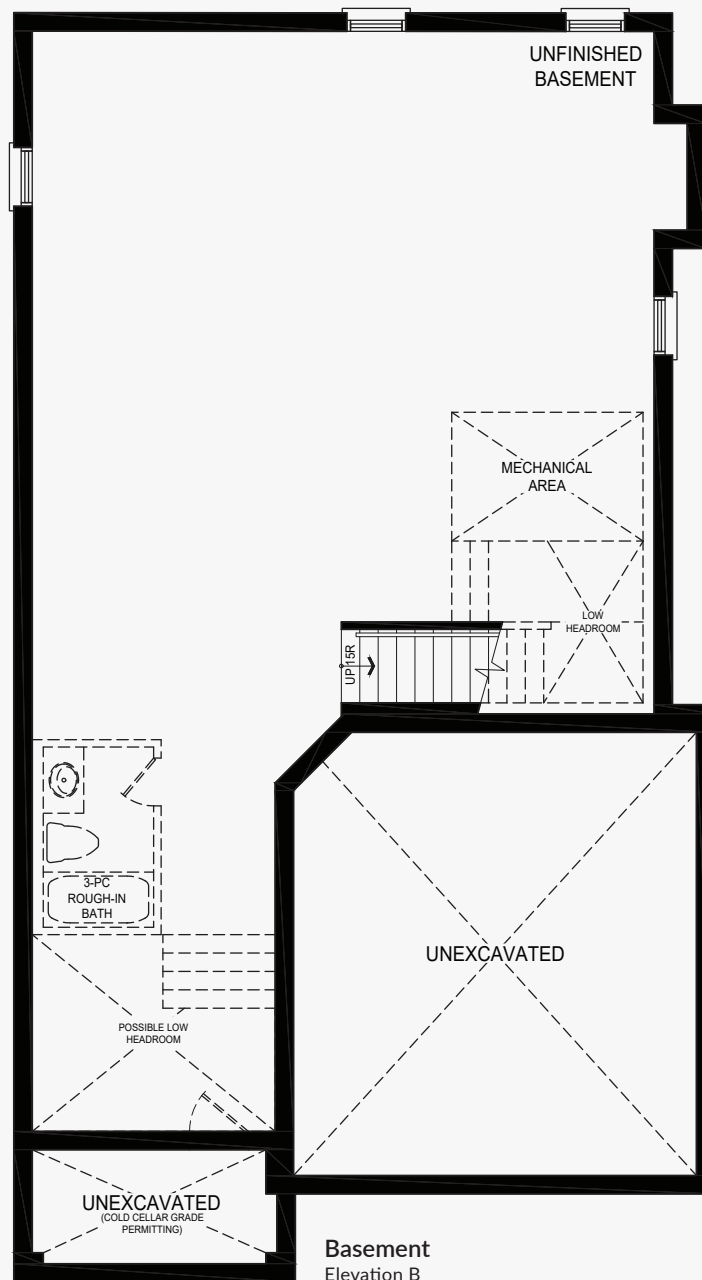




# Rex

## Castles of Caledon

Elevation B | 2,714 sq. ft.





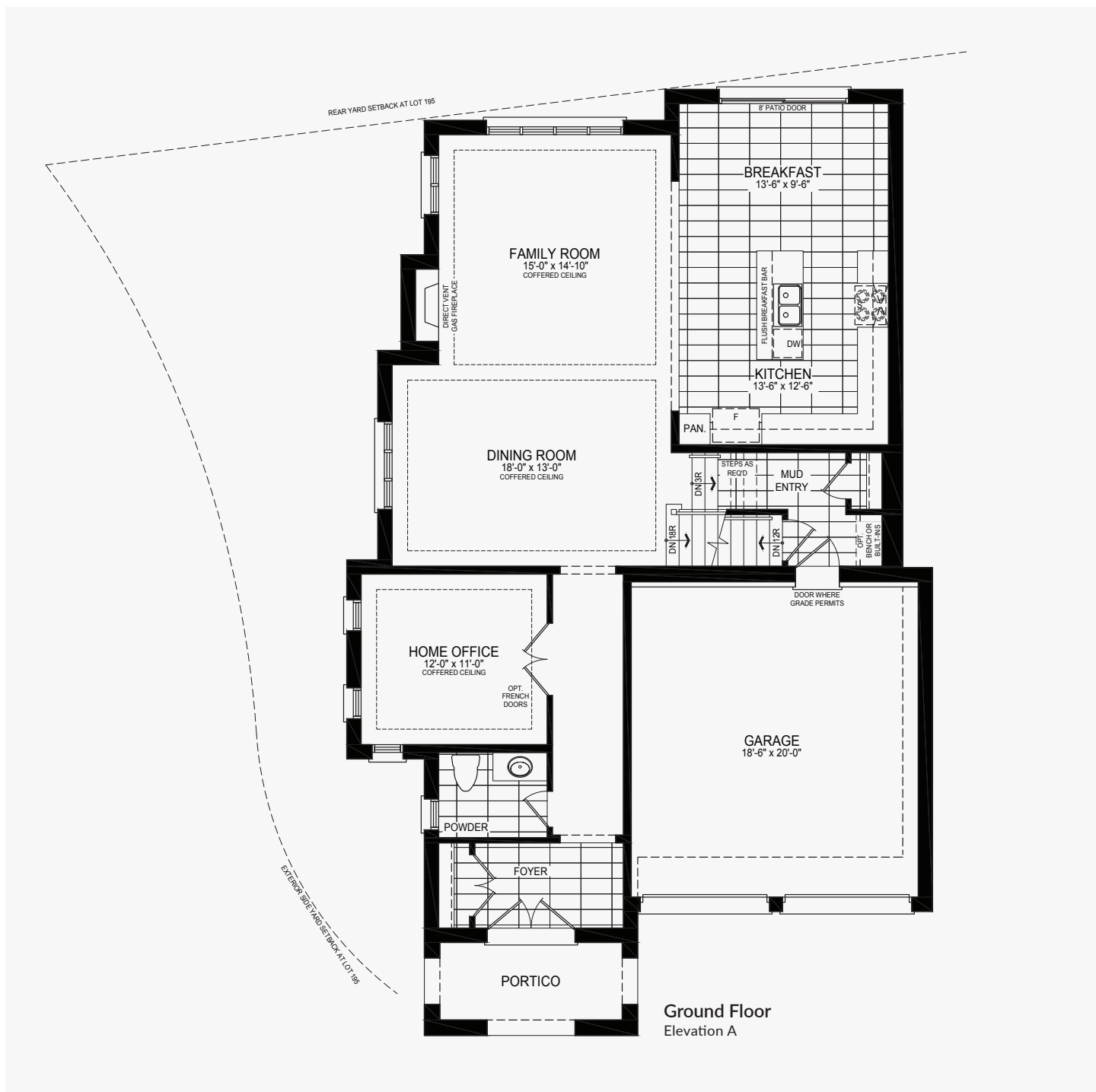
# Bran

Castles of Caledon  
Modified Corner | 3,050 sq. ft.



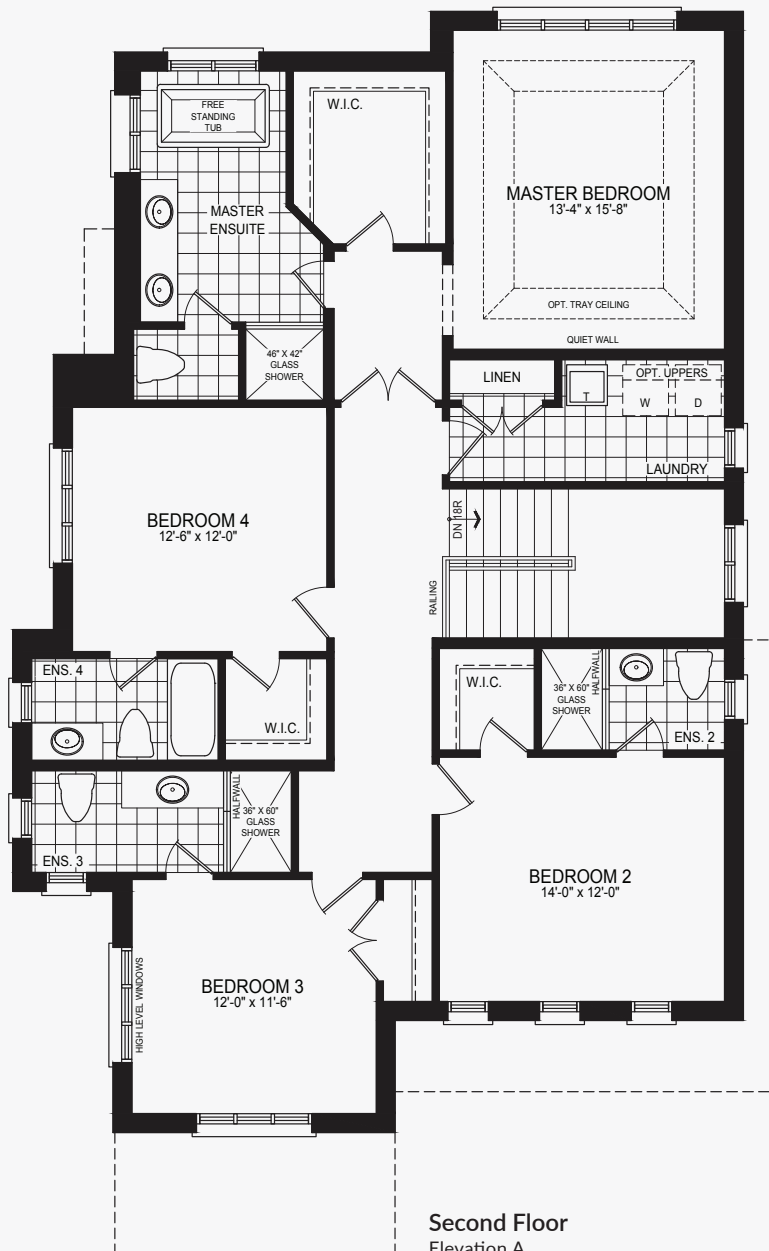
# Bran

Castles of Caledon  
Modified Corner | 3,050 sq. ft.



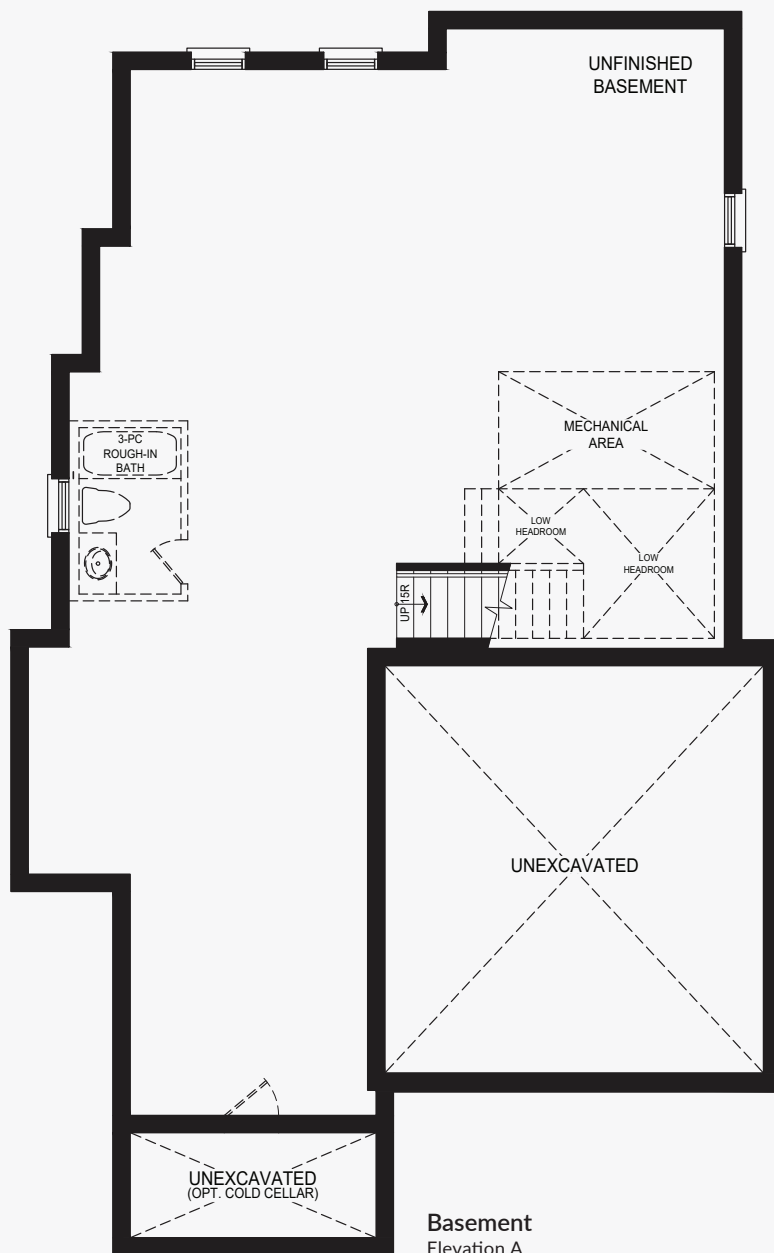
# Bran

Castles of Caledon  
Modified Corner | 3,050 sq. ft.



# Bran

Castles of Caledon  
Modified Corner | 3,050 sq. ft.





# Royal

Castles of Caledon

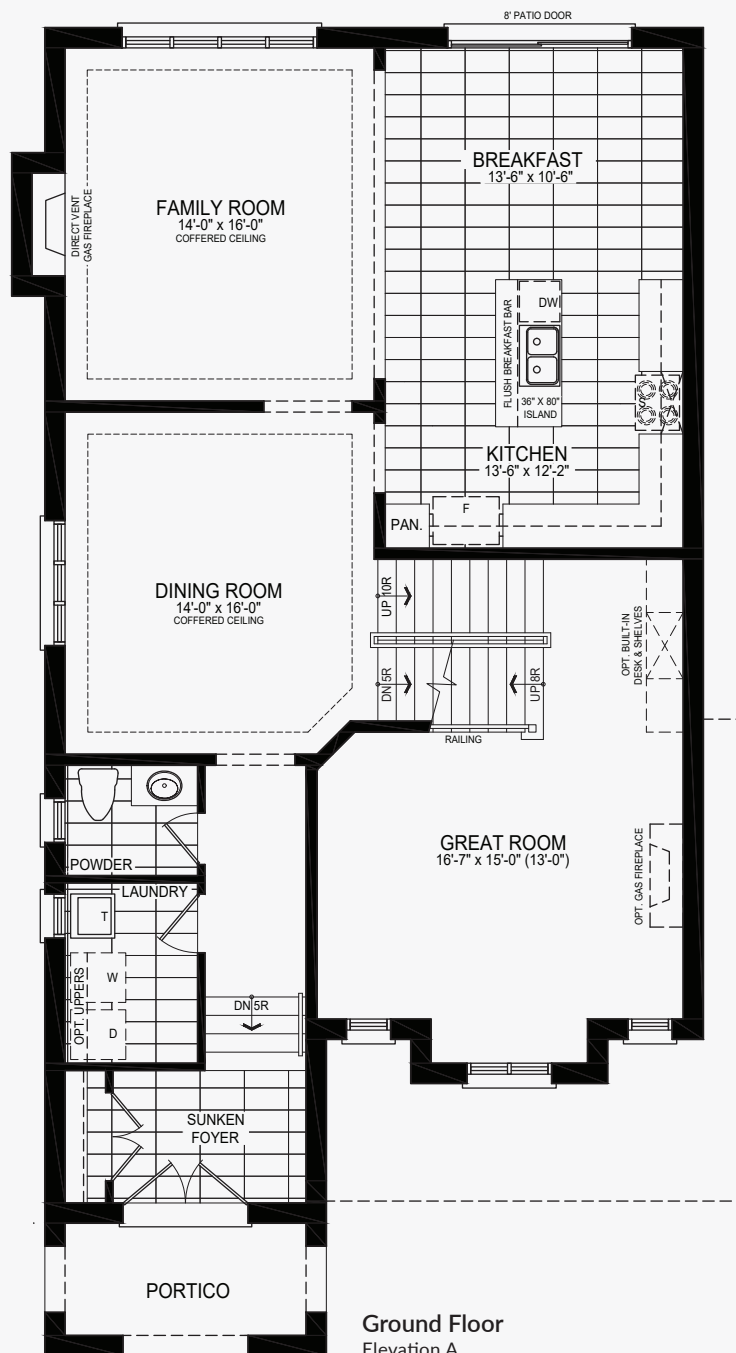
Elevation A | 3,066 sq. ft.



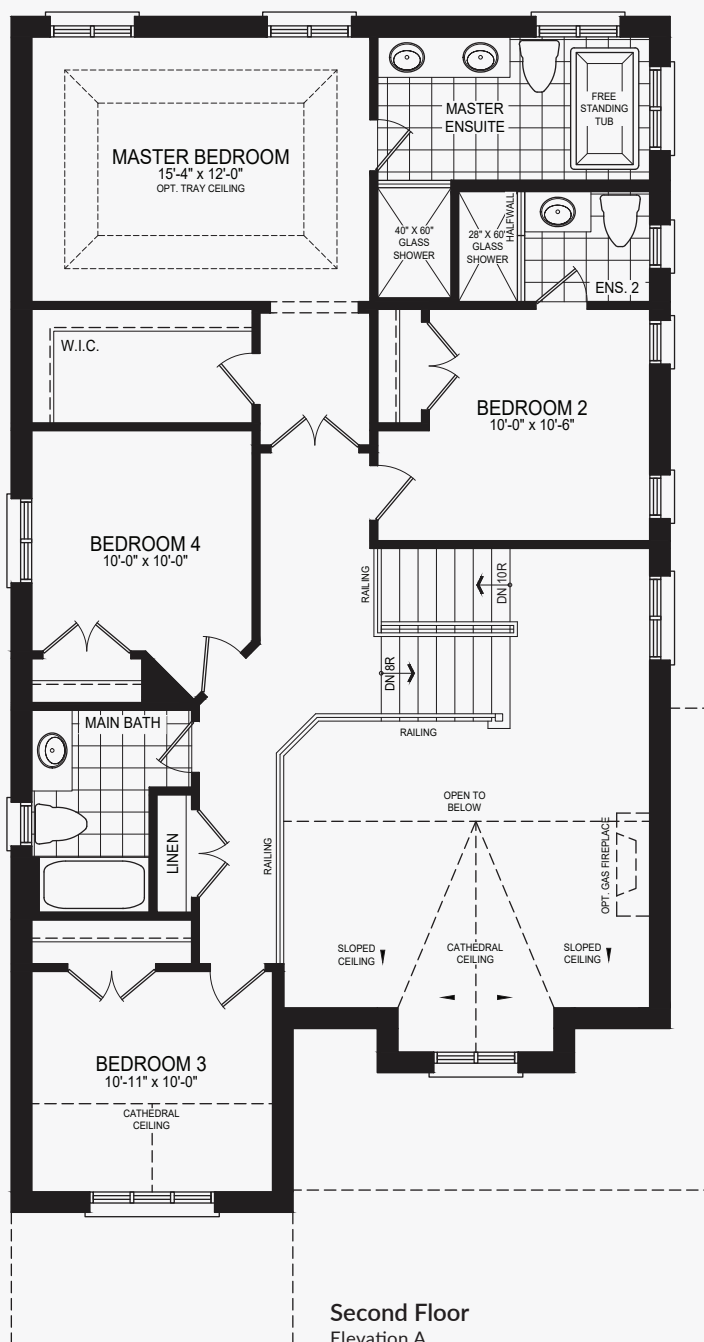
# Royal

Castles of Caledon

Elevation A | 3,066 sq. ft.



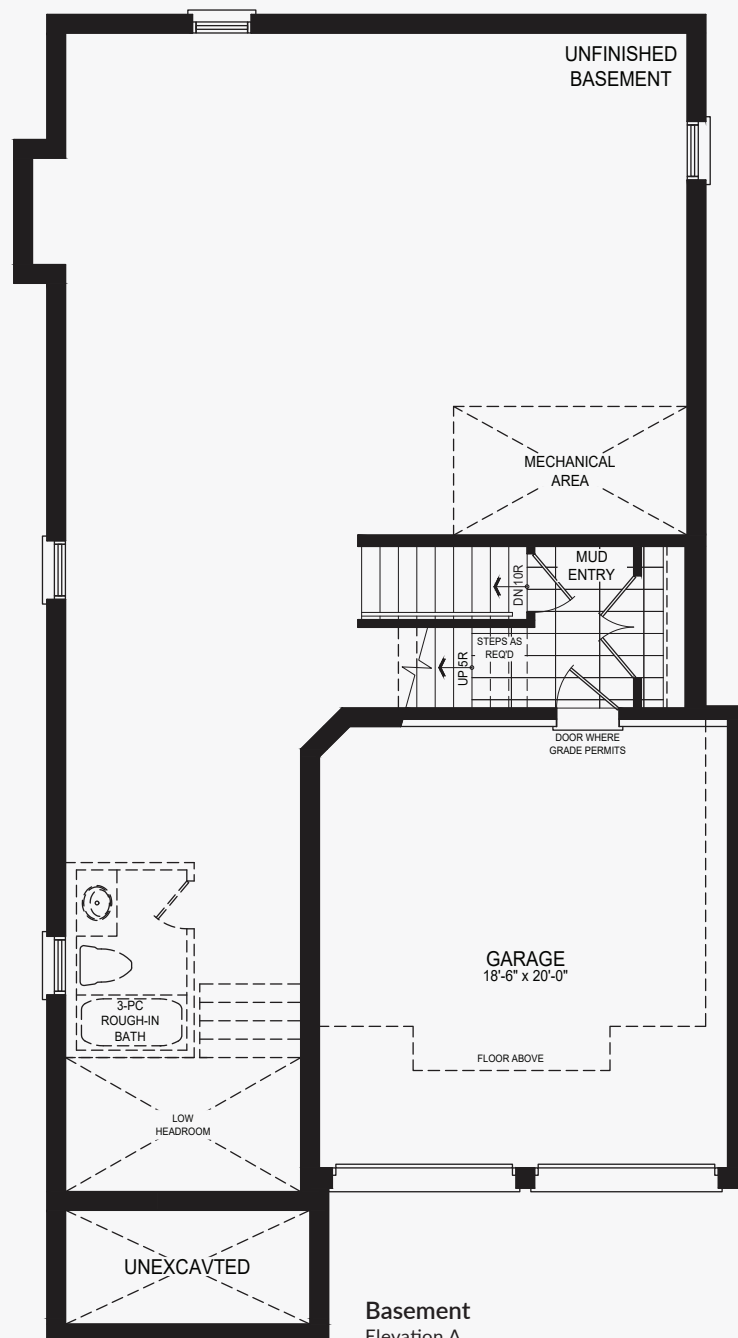




# Royal

Castles of Caledon

Elevation A | 3,066 sq. ft.

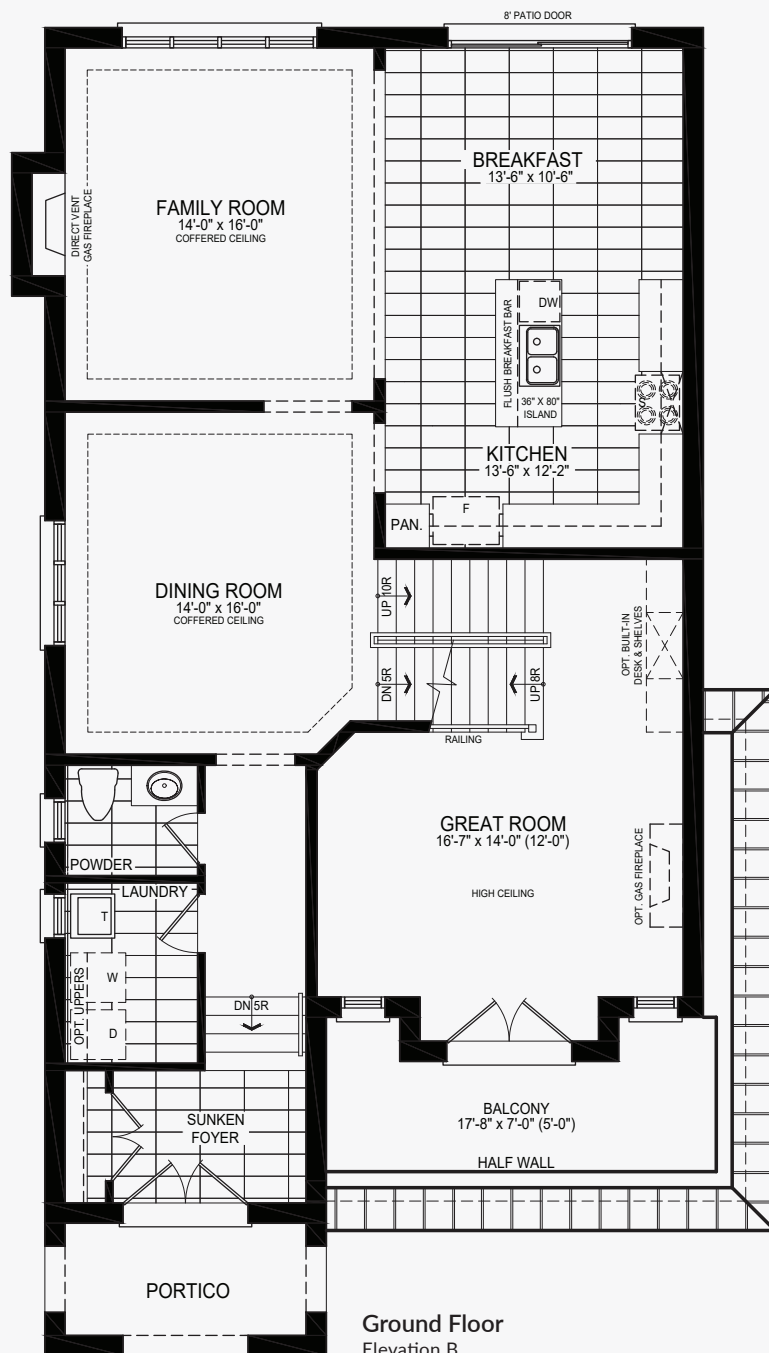


# Royal

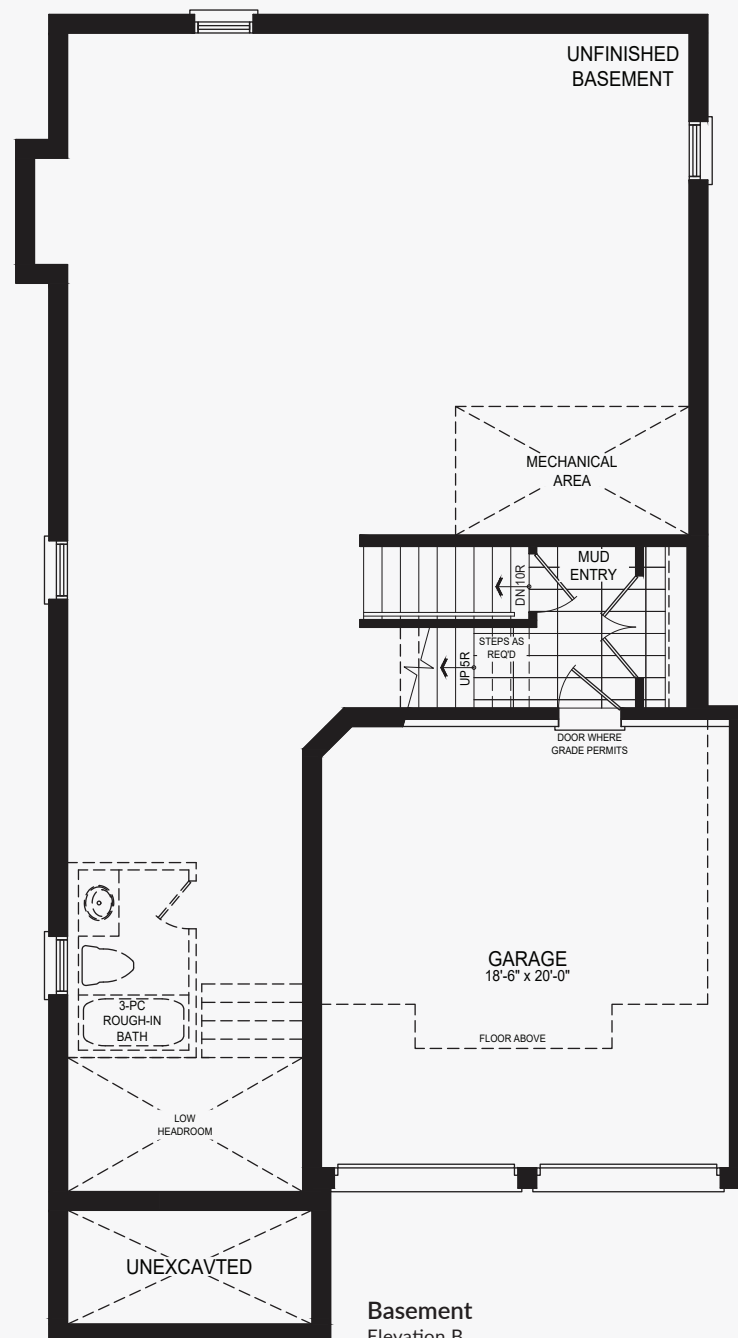
Castles of Caledon

Elevation B | 3,034 sq. ft.









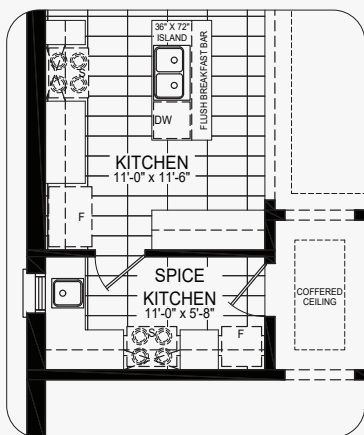
Basement  
Elevation B



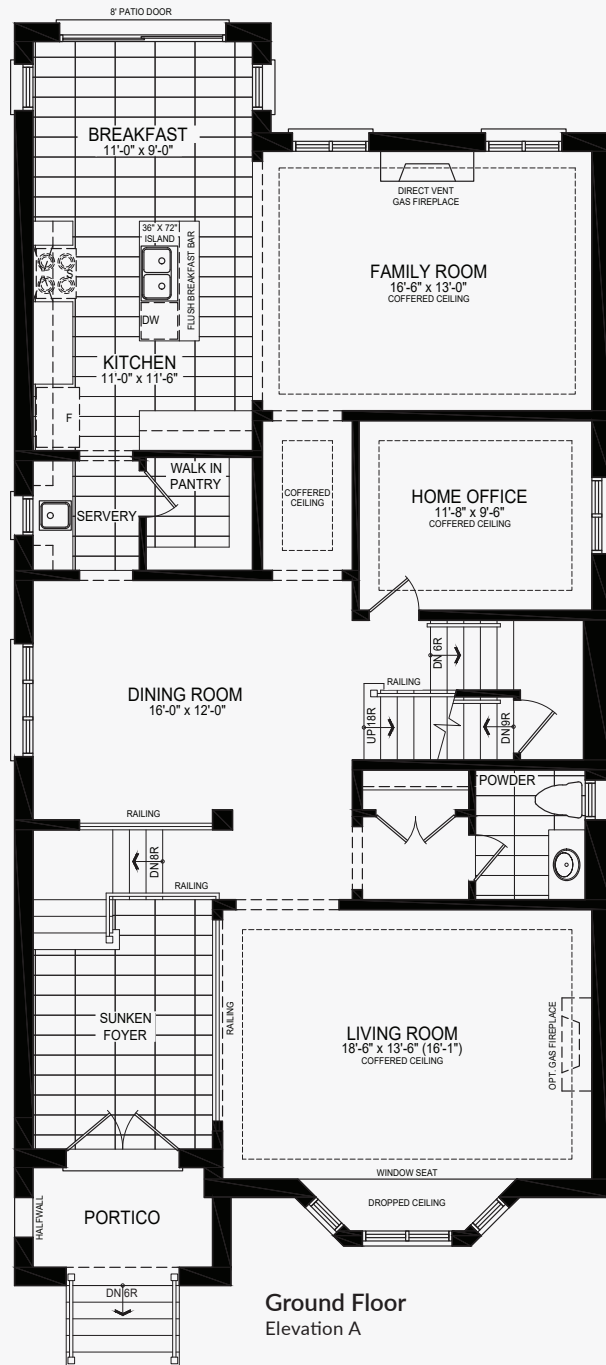
# Darbar

Castles of Caledon

Elevation A | 3,390 sq. ft.



**Ground Floor**  
w/partial opt. spice kitchen  
Elevation A



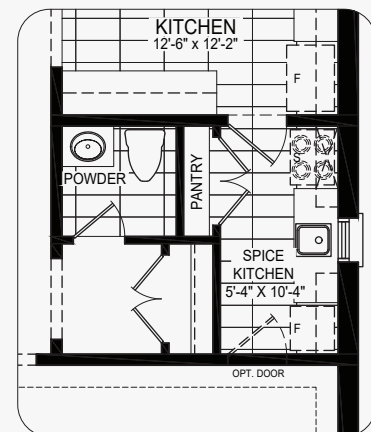
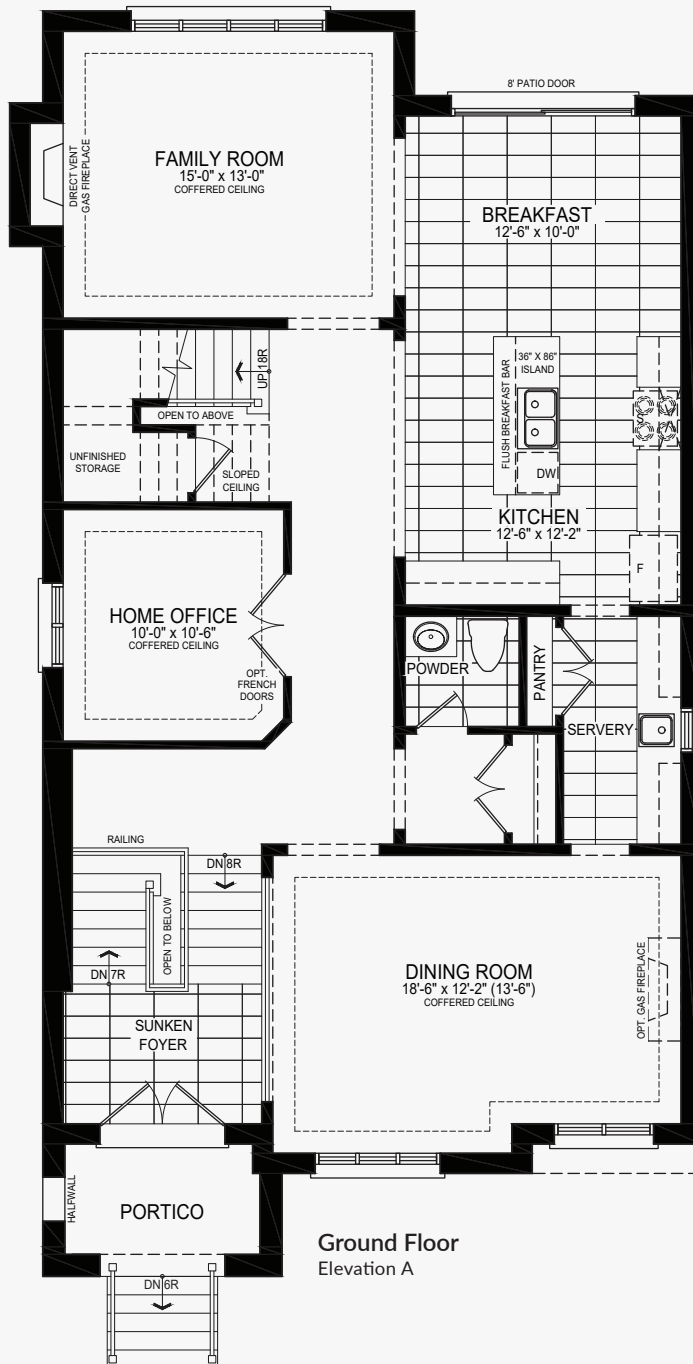
**Ground Floor**  
Elevation A

# Shah

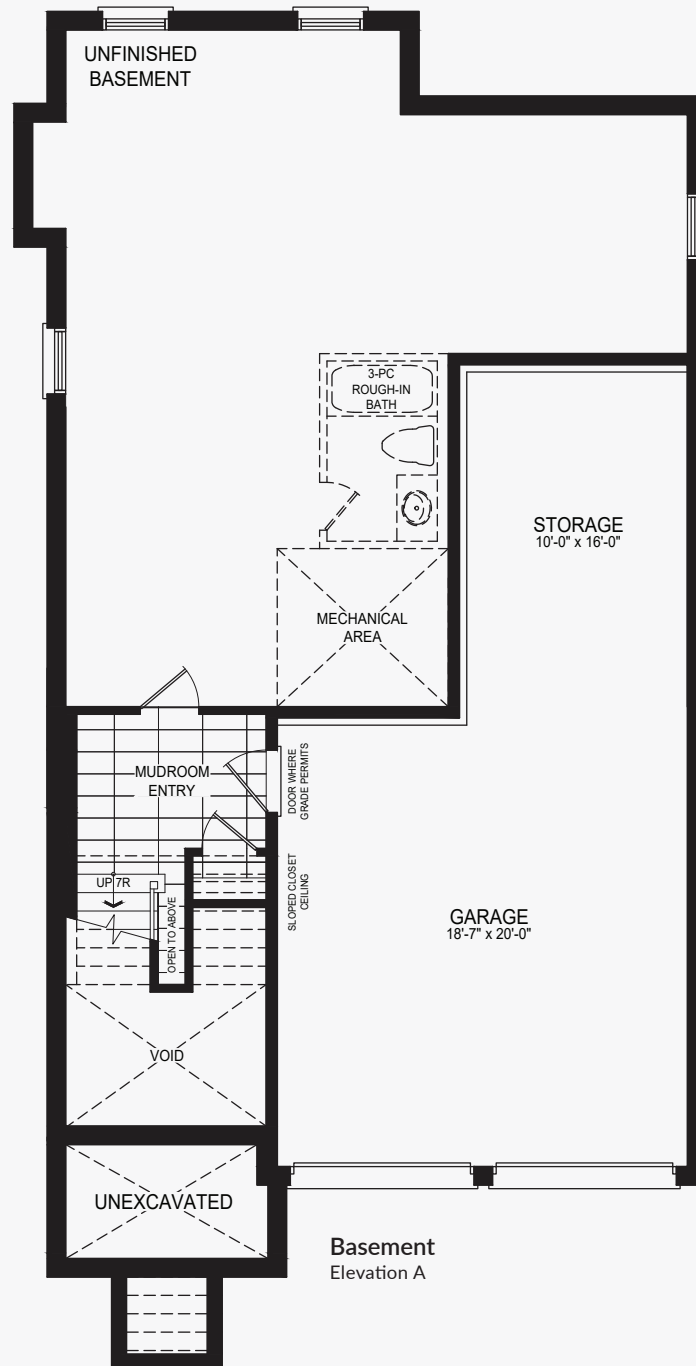
Castles of Caledon

Elevation A | 3,086 sq. ft.











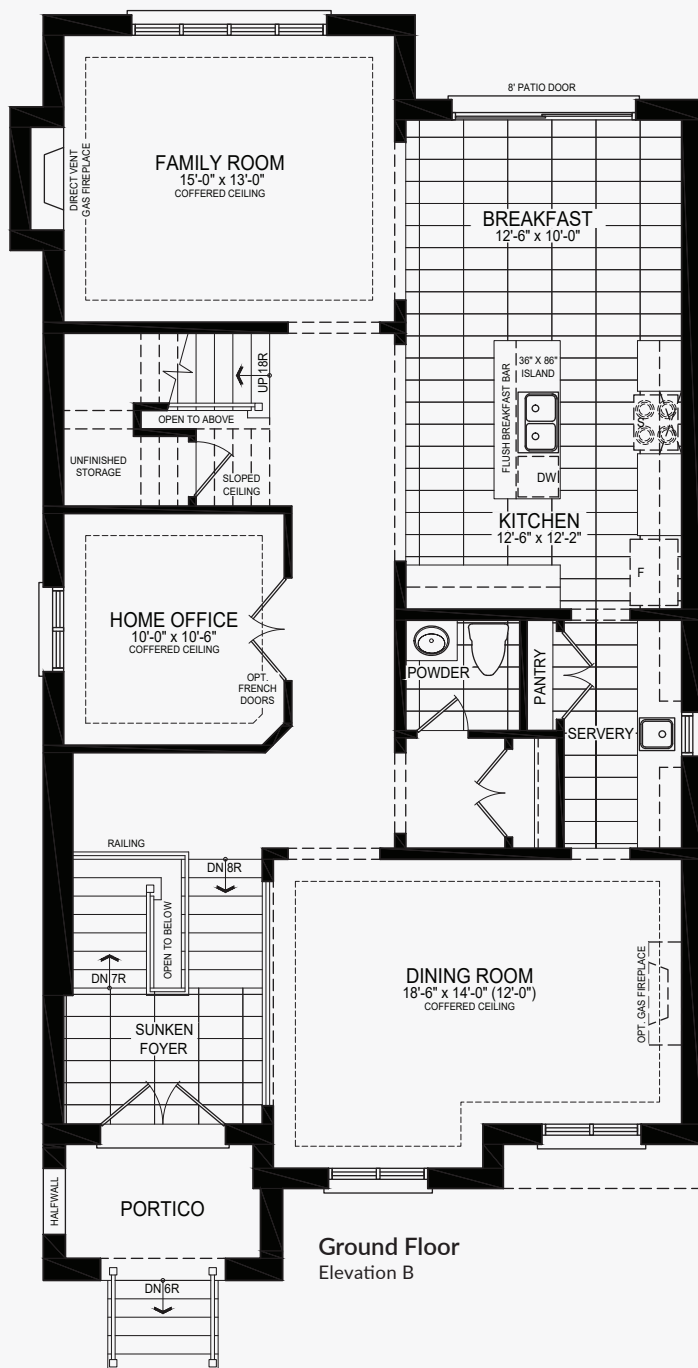
# Shah

Castles of Caledon

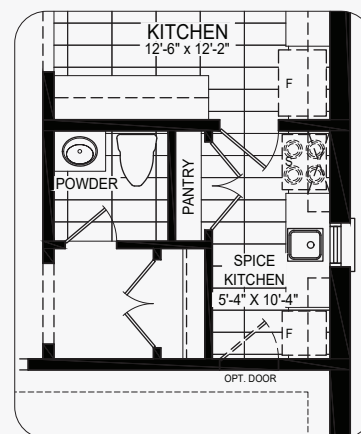
Elevation B | 3,078 sq. ft.



**indesign**  
HOMES

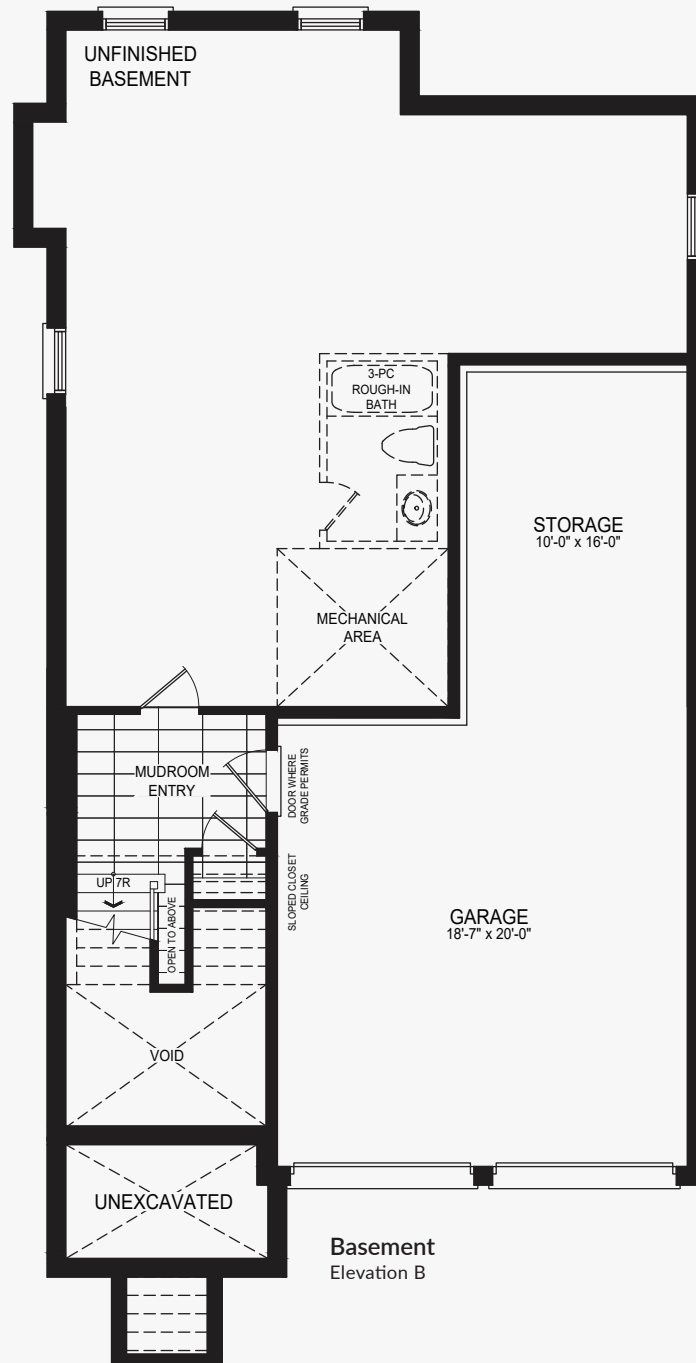


**Ground Floor**  
Elevation B



**Ground Floor**  
w/partial opt. spice kitchen  
Elevation B







# Chambord

Castles of Caledon

Elevation A | 3,521 sq. ft.

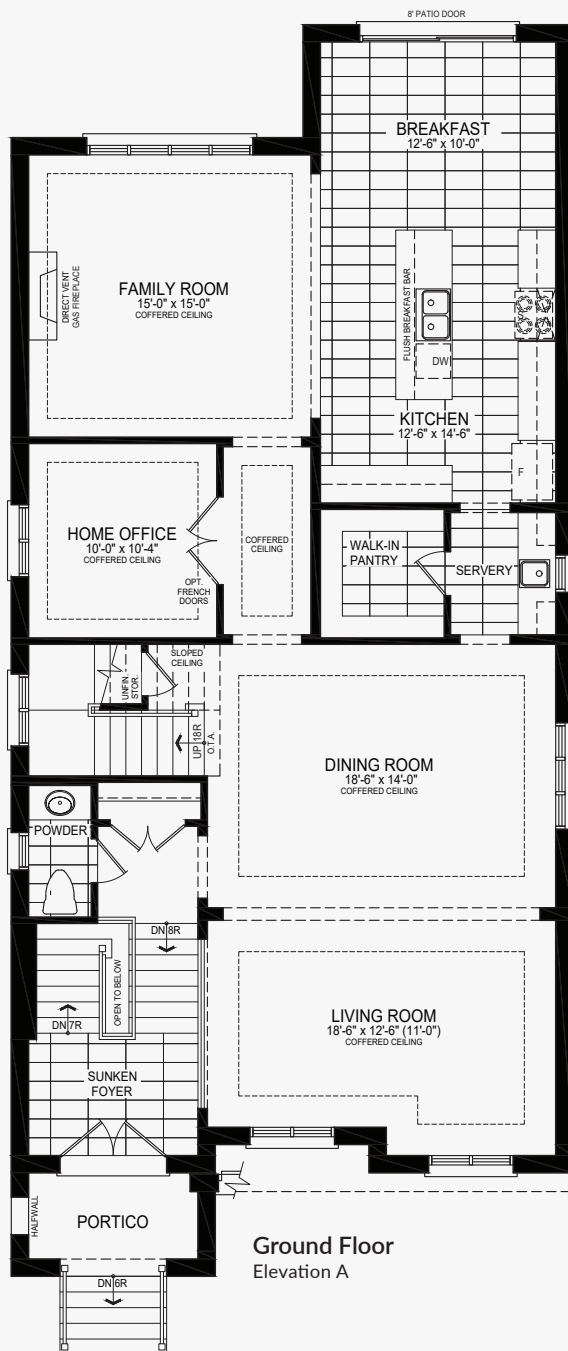




# Chambord

# Castles of Caledon

Elevation A | 3,521 sq. ft.



### Ground Floor Elevation A

# Darbar

Castles of Caledon

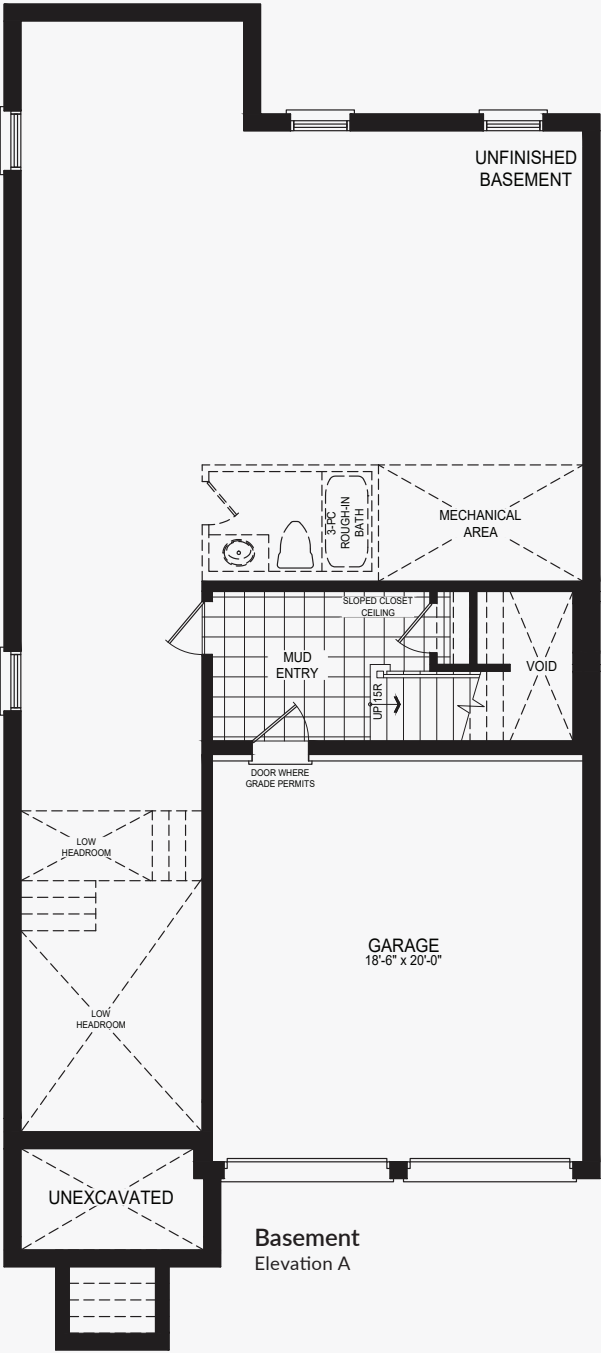
Elevation A | 3,390 sq. ft.



**indesign**  
HOMES



Second Floor  
Elevation A



Basement  
Elevation A



# Darbar

Castles of Caledon

Elevation B | 3,337 sq. ft.

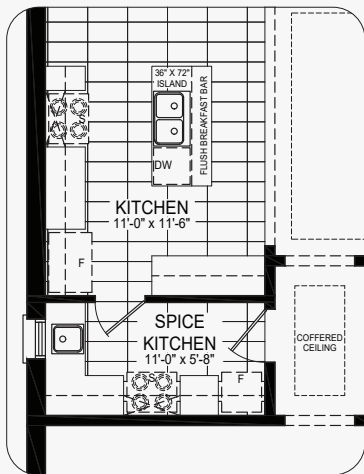




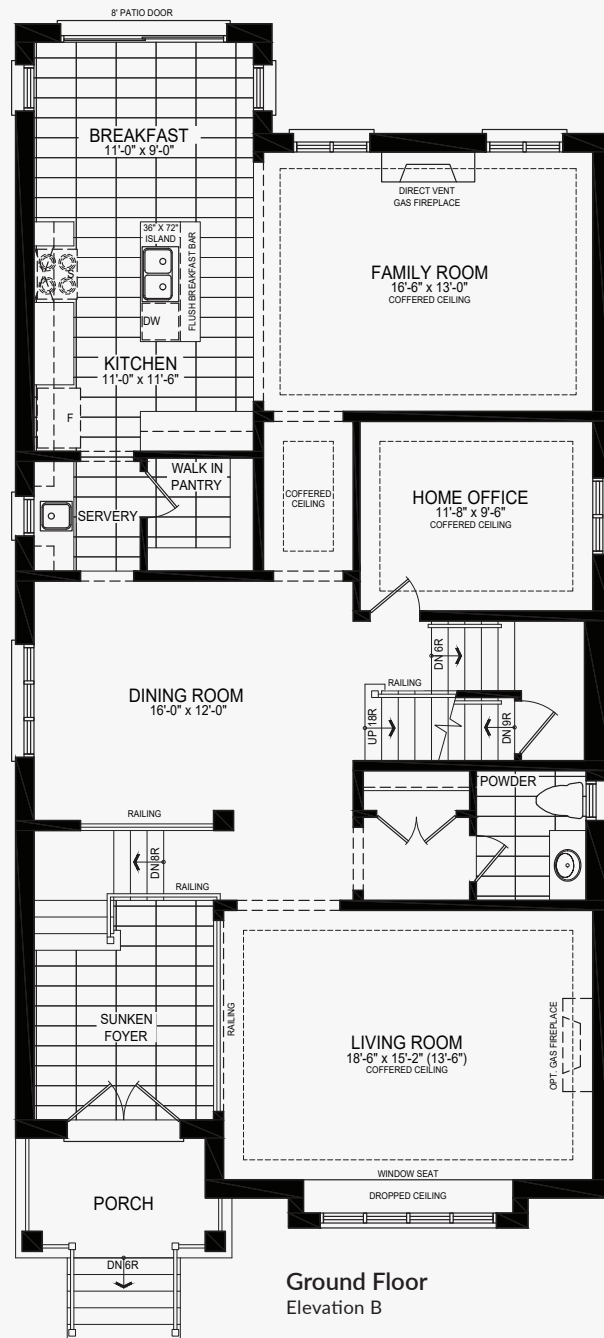
# Darbar

Castles of Caledon

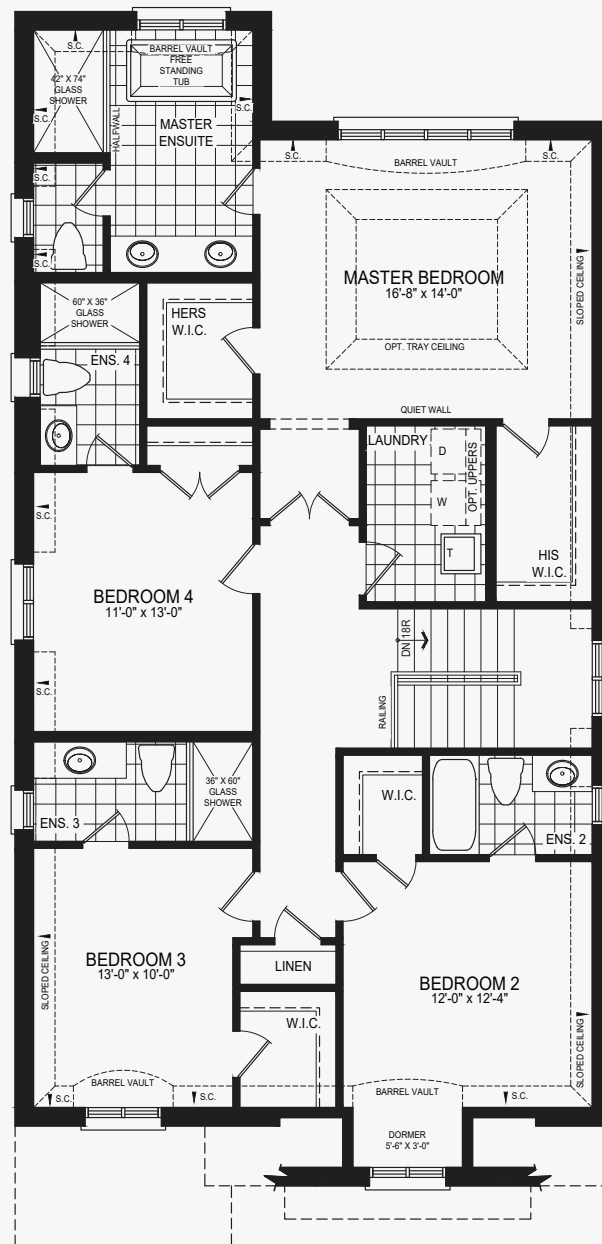
Elevation B | 3,337 sq. ft.



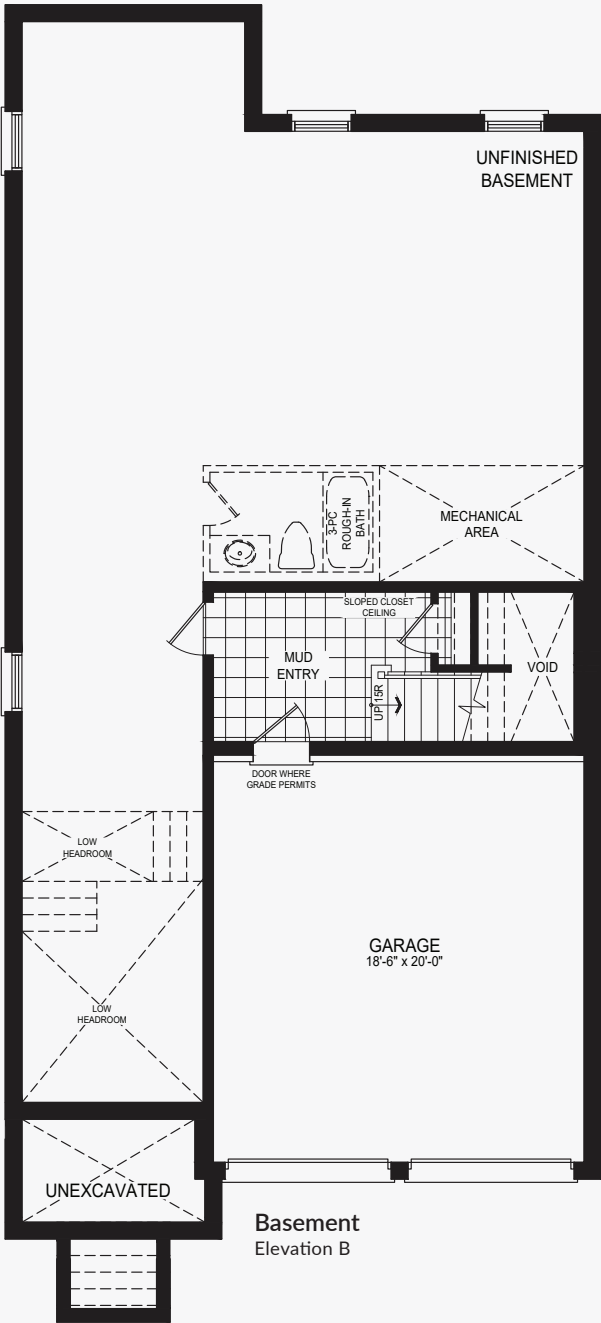
Ground Floor  
w/partial opt. spice kitchen  
Elevation B



Ground Floor  
Elevation B



Second Floor  
Elevation B

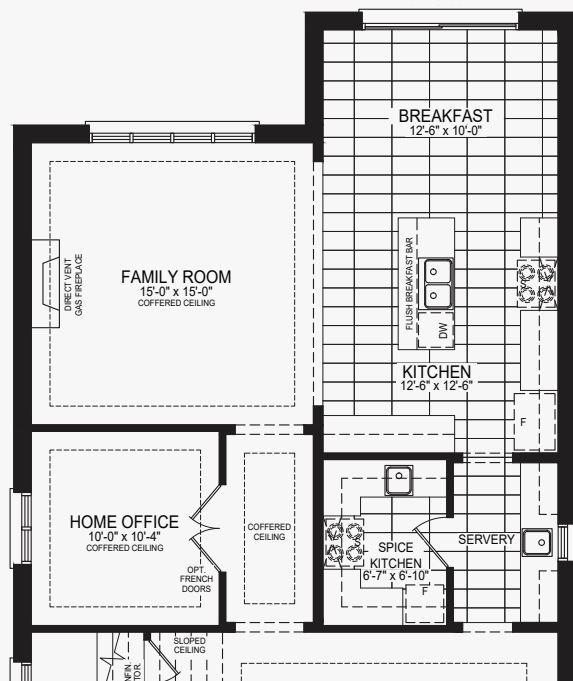


Basement  
Elevation B

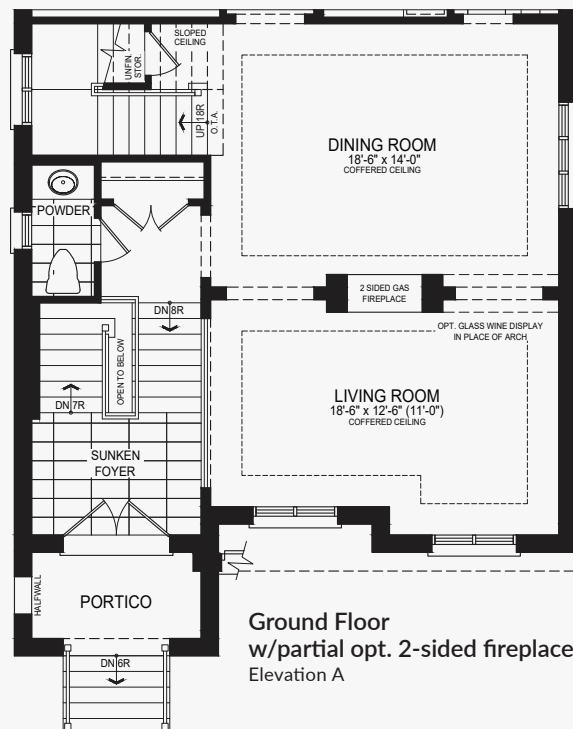
# Chambord

# Castles of Caledon

Elevation A | 3,521 sq. ft.



Ground Floor  
w/partial opt. spice kitchen  
Elevation A



Ground Floor  
w/partial opt. 2-sided fireplace  
Elevation A

# Chambord

Castles of Caledon

Elevation A | 3,521 sq. ft.



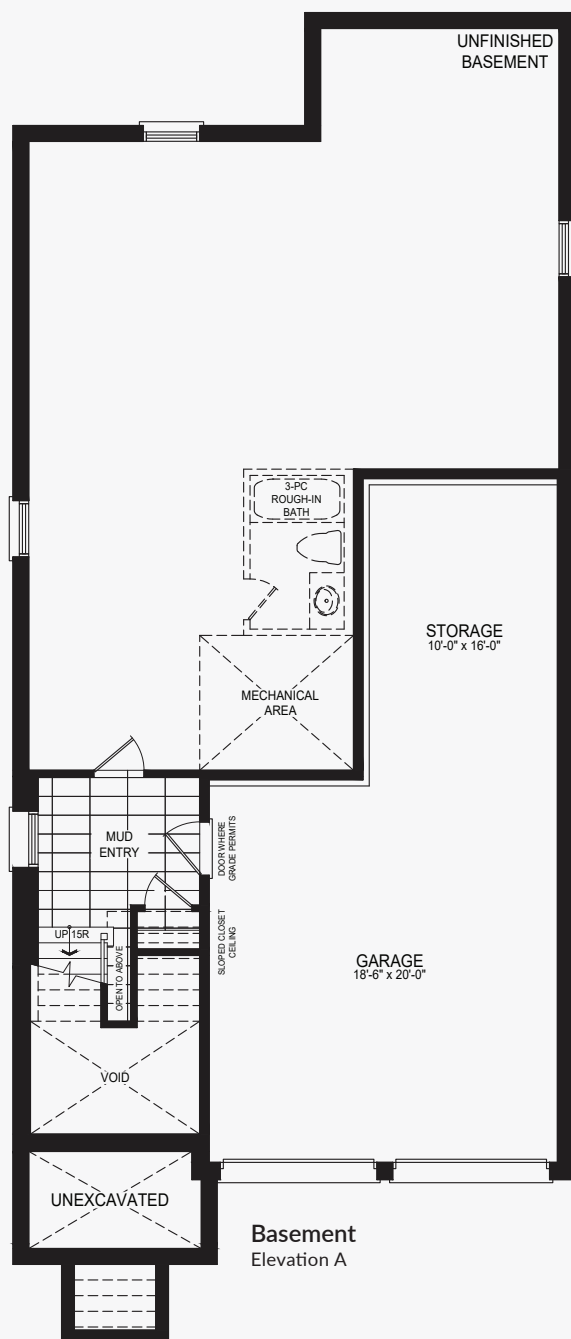
Second Floor  
Elevation A



# Chambord

Castles of Caledon

Elevation A | 3,521 sq. ft.



# Chambord

Castles of Caledon

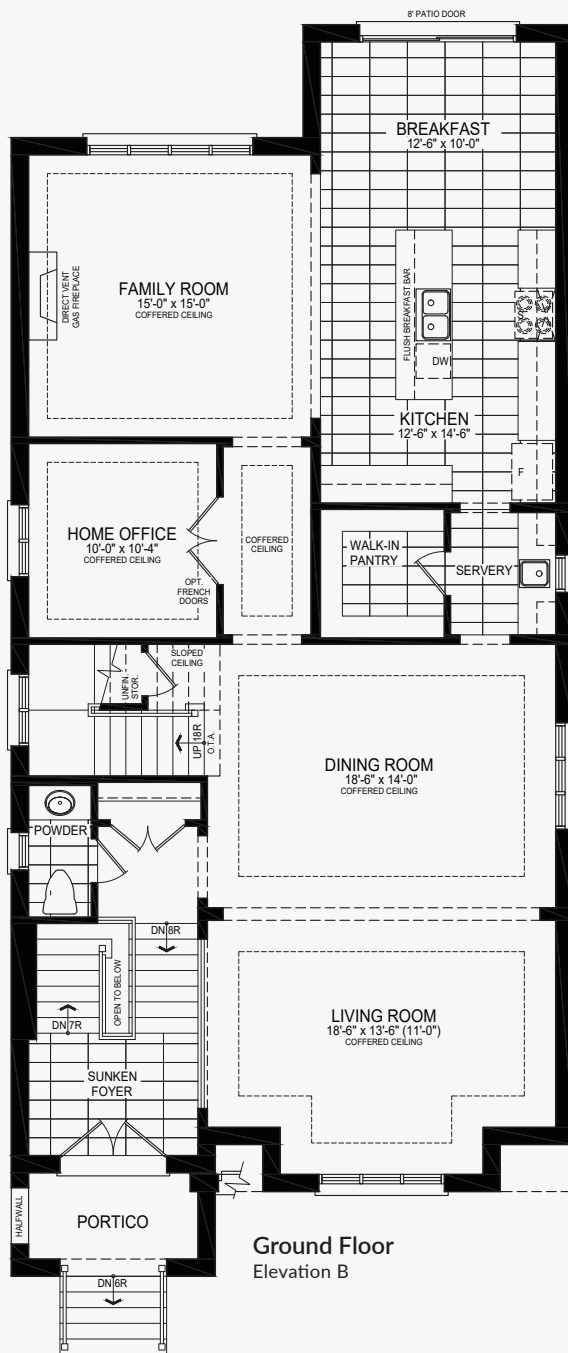
Elevation B | 3,537 sq. ft.



# Chambord

# Castles of Caledon

Elevation B | 3,537 sq. ft.



Ground Floor  
Elevation B

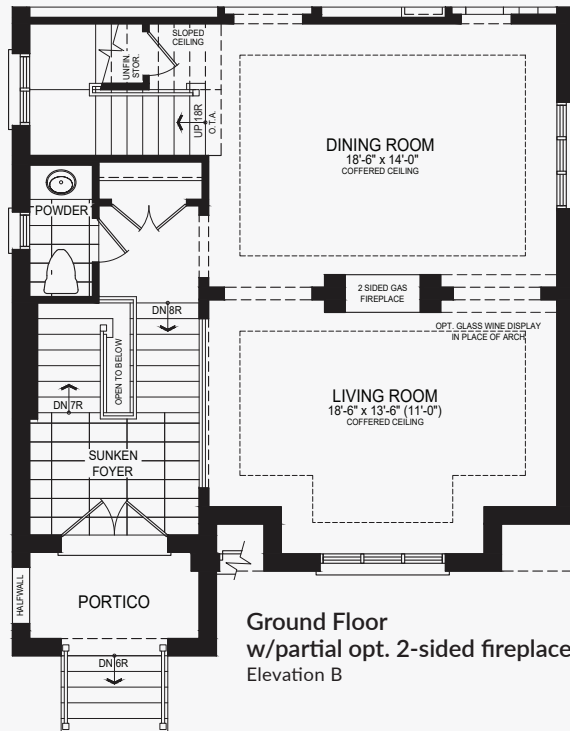
# Chambord

Castles of Caledon

Elevation B | 3,537 sq. ft.



Ground Floor  
w/partial opt. spice kitchen  
Elevation B



Ground Floor  
w/partial opt. 2-sided fireplace  
Elevation B

# Chambord

Castles of Caledon

Elevation B | 3,537 sq. ft.





# Chambord

Castles of Caledon

Elevation B | 3,537 sq. ft.

