

A futuristic sports car, possibly a concept car, is shown from a side profile. The car has a sleek, aerodynamic design with large air intakes and a prominent rear wing. It is set against a dark, moody background with a strong red and orange color palette. Overlaid on the image are several glowing orange geometric lines, including a large rectangle and several diagonal lines, creating a sense of motion and technology. The car's body appears to have a carbon fiber texture in some areas.

**CARPRO™**

2026





# Prepare

IronX LimeScale	4
GofX	6
WheelX	8
Descale	10
ReTyre	12
BugOut	13
Inside	16
TriX	16
TarX	16
Lift	17
MultiX	17
Claylube	17
IronX	18
Clarify	20
Clarify PH <sub>2</sub> OBIC	20
Eraser	20
CeriGlass	20
ClearCut	21
Fixer	21
Reflect	21
Essence	21
UltraCut	24
MetalliCut	25

# Protect

IMMORTAL PPF	30
Squeegee KIT	44
ImmoGel	46
Immortal CUT	48
UVX	50
DQUARTZ	56
DQ Go	58
DQ GForce	59
CQ DLight	62
CQFR	64
CQPRO	66
CQ.UK 3.0	68
CQUARTZ SiC	70
CQ Lite	72
CQ Fabric 2.0	74
CQ Leather 2.0	76
CQ Blackout	78
CQ Gliss 2.0	80
CQ DLUX	82
CQ Skin	84
Essence+	85
Release	87

# Maintain

MadMatte	92
SkinCareKIT	94
Reload 2.0	96
DarkSide	98
InnerQD	100
Spotless 2.0	102
EliXir	104
HydrO2	106
Reset	108
ECH2O	110
Perl	110
FogFight	110
So <sub>2</sub> Pure 2.0	110
The 16	112
Wash Box	114

# Accessories

FairyTail	118
FingerPrint	119
DarkSide BRUSH	120
Sanding Discs	121
DHydrate BOLD	122
Flat/Spot KIT	124
Clays X3	125
DabDab	128
GlassMitt	129
WheelsMitt	130
CQ Maintenance Bag	132
Measure	134
Dilute	136
MX	137
Air Fresheners	138
Detailing Brushes	142
Bucket Stickers	144
Other accessories	146
Polishing Pads	152

# 01

CARPRO™

## Prepare

Oil residue & water spot removal

Claying & polishing

Washing

Decontamination





# IronX LimeScale

## Dual-Action Decontamination for Ferrous & Mineral Deposits

IronX Lime Scale is an advanced hybrid cleaner that transforms the decontamination process by combining iron fallout removal and water spot elimination into one efficient step.

Its mild acid-based composition breaks down stubborn ferrous particles from brake dust and rail residue, while simultaneously dissolving mineral deposits such as calcium and magnesium from hard water. The result is a surface that's smooth, spotless, and fully decontaminated: ready for polishing, coating, or protection. This cutting-edge formula saves time while delivering uncompromising results.

Safe, effective, and easy to use, IronX Lime Scale restores clarity and purity to paint, glass, wheels, and other exterior surfaces, ensuring your vehicle maintains that flawless, professional finish.

**COMBINES IRON AND MINERAL REMOVAL IN A SINGLE STEP**

**DISSOLVES BRAKE DUST, RAIL FALLOUT, AND WATER SPOTS**

**RESTORES SMOOTHNESS BEFORE COATING OR SEALING**

**SAVES TIME AND ENERGY DURING DECONTAMINATION**



Available in:  
50mL / 500mL / 1L / 4L





# GofX

## Glass Oil Film Remover & Hybrid Deep Cleaning Formula.

GofX is a dedicated glass cleaner and restorer designed to revive perfect optical clarity on all exterior glass surfaces. Its innovative chemical-abrasive formula breaks down and removes the toughest contaminants that ordinary glass cleaners can't touch – eliminating oily traffic film, insect residue, mineral deposits, and old sealants or coatings.

GofX restores smoothness and transparency to your windshield and windows, improving visibility and preparing the surface for maximum bonding with coatings or sealants. Despite professional performance, GofX remains easy to use by machine or by hand, on wet or dry glass, always ensuring your glass remains spotless, streak-free, and crystal clear.

**REMOVES STUBBORN OILY FILMS**

**CLEANS BUG RESIDUE, WATER SPOTS, AND OLD COATINGS**

**RESTORES GLASS CLARITY AND SMOOTHNESS FOR IMPROVED VISIBILITY**

**PREPARES SURFACES FOR CERAMIC COATINGS OR SEALANT APPLICATION**

**SAFE AND EFFECTIVE FOR ALL EXTERIOR GLASS SURFACES**



Available in:  
250mL / 500mL / 1L / 4L / KIT



# WheelX

WheelX is a powerful fast-acting dedicated wheel cleaner formulated to break down ferrous particles, road grime, dirt and other stubborn contaminants in ONE efficient step.

This reactive blend provides a safe, yet thorough cleaning of wheels, calipers, wheel wells and undercarriages during regular maintenance washes or for coating preparation.

WheelX is safe to use on OEM, CARPRO coated, chrome and powder coated wheels without damaging the finish. It can also be used for removing old sealants from wheels, calipers and wheel wells.

**POWERFUL 1-STEP WHEEL CLEANER**

**EFFORTLESSLY REMOVES DIRT, BRAKE DUST, GREASE...**

**SAFE ON PAINTED, POWDER-COATED, CHROME WHEELS**

**SAFE ON CARPRO COATINGS**



Available in:  
50mL / 500mL / 1L / 4L





# Descale

Descale is our new acidic car shampoo designed for maximum efficiency against tough dirt, hard water and all manner of nastiness.

It breaks down the built-up contamination that reduces gloss and clogs the surface of neglected paint and coatings.

Like many other CARPRO products it can be used in full circle to remove waxes and sealants, prepare paint for polishing, degrease afterwards, as well as to remove traffic film and minerals on coated and non-coated vehicles during regular maintenance washes.

**REMOVES MINERAL DEPOSITS AND TOUGH DIRT**

**FOR COATED AND NON-COATED VEHICLES**

**SAFELY RESTORES CERAMIC COATING PROPERTIES**



Available in:  
50mL / 500mL / 1L / 4L







# ReTyre

ReTyre is specifically designed to clean rubber material from accumulated contamination, old tyre dressings, and antioxidants responsible for browning, to give you a fresh new tyre look and prepare the surface to apply BlackOut, Perl or your favourite tyre dressing.

The high pH foaming action combined with brush agitation pulls the contamination out of the pores of the rubber for a deep clean. ReTyre can also be used for cleaning most modern wheels with clear coat.

**RESTORES NEW TYRE LOOK**

**REMOVES BROWN DISCOLORATION**

**PREPARES RUBBER FOR COATING OR DRESSING**



Available in:  
50mL / 500mL / 1L / 4L









# BugOut

## INTENSIVE INSECT REMOVER

BugOut safely and easily removes smashed and waded bug remains while softening hard chitin shells for safe removal. BugOut was developed to be safe on a wide variety of surfaces including paint, clear coat, PPF, glass, plastic, metals and more. It quickly melts the dried remains allowing them to be easily wiped or rinsed off.

# Inside

## DEDICATED LEATHER & INTERIOR CLEANER

CARPRO Inside is an incredible cleaning solution for vehicle interiors of all shapes and sizes. Inside is specially formulated to clean vinyl, plastic, finished leather and a variety of other interior surfaces. Utilizing a high-foaming mix of proprietary surfactants and gentle detergents, Inside is able to easily remove dirt, sweat, oils, and all manner of soling from interior surfaces.



# MultiX

## CONCENTRATED MULTI-PURPOSE CLEANER

MultiX comes in a concentrated formula capable of removing all manner of filth and soiling. As is the case with most of the CARPRO line, our products function in a full circle, meaning you can use MultiX as a pre-wash cleanser, as well as at the end of the wash cycle for deep cleansing and removal of various stains on a protected surface.

# Lift

## CONCENTRATED PRE-WASH

Lift is a highly concentrated pre-wash foaming agent that dissolves and lifts away a large amount of dirt and grime in a completely touch-less manner, prior to the application of vehicle shampoo.



# TriX

## 2-IN-1 IRON AND TAR FALLOUT REMOVER

CARPRO TriX combines your vehicle decontamination needs into a single effective product. Perfect for time-pressed enthusiasts or professional detailers, TriX's formula safely dissolves both organic and inorganic fallout in 1-step; thus streamlining the process and saving time and money on full details.

# TarX

## POWERFUL TAR & ADHESIVES REMOVER

Based on all-natural active ingredients, TarX dissolves stubborn tar, rubber, insect splatter and adhesive residues without aggressive scrubbing, harmful chlorinated solvents or other harsh chemicals.



# TarX LowVOC

## LOW VOC POWERFUL TAR REMOVER

We're happy to introduce a new version of our proven tar remover: TarX – LowVOC. Motivated by the changing environmental regulations, we have reformulated TarX to meet them, while maintaining cleaning power.

# Claylube

## SLICK, MULTI-PURPOSE LUBRICANT

Claylube is a special mixture of surfactants and solvents designed to reduce friction while sanding, polishing or claying painted automotive surfaces.





# IronX

IronX's advanced pH-balanced (pH 7) formula safely breaks down ferrous metallic contamination caused by automotive brakes, rail travel and construction from delicate vehicle surfaces. It can be used on paint, plastic, chrome, glass and alloy wheels.

IronX works by forming a water-soluble complex with iron particles lodged in the surface, allowing them to be rinsed free, while cleaning deeper than washing or claying alone.

Available in **Original**, as well as triple action pre-wash **SnowSoap** and a concentrated **IronX Paste** formula for stubborn contaminants, IronX is the original, and still the best, acid-free iron fallout remover.

POWERFUL IRON FILINGS & CONTAMINANTS CLEANER

DISSOLVES IRON FALLOUT

FAST ACTING



Available in:  
50mL / 500mL / 1L / 4L







## Clarify

### DEDICATED GLASS CLEANER

CARPRO Clarify is a dedicated glass cleaner, formulated to cut through the toughest grime without damaging your hydrophobic glass coating. Designed to remove traffic film, oils, fingerprints, dirt and contamination.

## Eraser

### INTENSIVE DEGREASER AND POLISH CLEANER

CARPRO Eraser is an intensive cleaner for removal of oils, silicones and polishing dust from all hard vehicle surfaces to ensure maximum bonding performance of the CQUARTZ line of nanotech coatings.



## ClearCut

### NEXT-GEN VERSATILE FAST CUT COMPOUND

While its cutting capabilities are extraordinary, the finish can also surprise you. With the capability of removing scratches as deep as P1000 CARPRO ClearCut is the perfect tool for a 2-step job on any paint or even 1-step on many medium-to-hard paintworks.

## Fixer

### VERSATILE MEDIUM CUT COMPOUND

Fixer is an advanced 1-Step polishing compound featuring a blend of Nanotechnology ingredients, and sophisticated diminishing abrasive powders.



## Clarify PH<sub>2</sub>OBIC

### HYDROPHOBIC GLASS CLEANER

Now you can maintain your glass with the same cleaning power and streak-free finish as the original Clarify formula while adding slickness and repellency in one easy step to instantly increase driver visibility in bad weather and reduce wiper chatter.

## CeriGlass

### CeO<sub>2</sub>-BASED GLASS POLISH AND CLEANER

CeriGlass represents a cutting-edge solution for glass correction with a blend of ceramic abrasives, cerium oxide, and nanotech ingredients.



## Reflect

### SUPER FINE, HIGH-GLOSS/MIRROR POLISH

Developed to create the ultimate gloss prior to application of CQUARTZ coatings, Reflect represents the future of paintwork finishing technology, featuring rapidly-diminishing abrasives and sophisticated nano-particles.

## Essence

### VERSATILE EXTREME GLOSS PRIMER

Essence is a unique blend of nano-tech quartz, high-gloss durable resins, and fine abrasives that are blended together at a microscopic level to form something truly groundbreaking. Essence leaves an amazing high gloss finish with semi-permanent fillers and SiO<sub>2</sub>-based protective capabilities all built in!









# UltraCut

UltraCut is one of the most versatile cutting compounds you'll ever use, suitable for all defect removal. You can alter its cutting ability by variations in your pad choice and hand movement.

UltraCut contains a cocktail of fully diminishing abrasives, which correct heavy defects, while producing minimal hazing. Combine it with the CARPRO cutting pads (wool, flash, cool) or microfibres for extremely effective and efficient defect removal. Drop down to CARPRO orange polishing pad and you can finish down hologram-free even on the most sensitive paints.

UltraCut is a perfect solution for rotary or DA polishing with extremely low dusting and a lubricant that allows the abrasives to be fully worked over extended periods. This allows total breakdown with less marring and holograms.

EXTREME CUTTING ACTION

SUITABLE ON ALL PAINT FINISHES

SUITABLE FOR DUAL ACTION AND ROTARY USERS



Available in:  
250mL / 500mL / 1L / 4L



# MetalliCut

MetalliCut was formulated to create a high-gloss finish on any soft or hard metal.

No expense was spared in the R&D of MetalliCut with diamond abrasive powders and diminishing abrasive compounds providing a fast cutting action with a high-gloss finish, safe on even the softest of metals – chrome.

Fast and effective, MetalliCut is the go-to metal polish for exhaust tips, chrome wheels, bumpers and trim. Create a better-than-new shine with MetalliCut and a foam polishing pad by machine or by hand!

EFFECTIVE ON ALL TYPES OF METALS

HIGH GLOSS FINISH

CAN BE USED BY HAND OR MACHINE



Available in:  
250mL / 500mL / 1L



02

CARPRO™

Protect

C.QUARTZ

D.QUARTZ

immortal™  
Instant Self-Healing  
PPF



## PAINT & CARBON

### immortal<sup>™</sup> Instant Self-Healing PPF

Immortal<sup>™</sup> Instant Self-Healing PPF will mechanically protect the paint surface even from hard impacts, while its thick instant self-healing layer makes all lighter swirls and scratches disappear before your eyes in temperatures as low as 0°C.

### D.QUARTZ

DQUARTZ is a revolutionary line of coatings formulated with functionalised nanodiamond particles, which improve paint hardness by up to 5 points on the pencil scale, allowing to resist light swirls and scratches.

### C.QUARTZ

The legendary CQUARTZ line is a variety of professional- and consumer- grade ceramic coatings famous for their unparalleled chemical protection, hydrophobicity, and stunning gloss.

CHOOSE YOUR WEAPON  
AGAINST THE ELEMENTS.



## DEDICATED

### GLASS<sup>1</sup>

Protect glass surfaces with Immortal<sup>™</sup> Glass - our new hybrid protection film designed to withstand even hard impacts at speed, while retaining perfect optical clarity.

Use GForce - a glass coating based on the revolutionary DQUARTZ technology for added smoothness and a beautiful water-shedding hydrophobic effect for clarity of vision, as well as allowing dirt, mud, frost, and ice to be removed much easier.

Apply one of 5 grades of Immortal<sup>™</sup> UVX heat -rejecting film to experience driving comfort through reduced glare and more efficient cooling.

### INTERIOR<sup>2</sup>

Keep your interior looking new for longer. Protect leather and fabrics from environmental factors, repel and resist stains without changing their appearance or breathability.

### WHEELS & TYRES<sup>3</sup>

Repel road grime & brake dust from wheels and exterior plastics, protecting their finish and keeping them looking new with much less maintenance. Protect your tyres from harmful UV, and create an incredibly durable and stunning satin-like appearance.

### PLASTICS, HEADLIGHTS & PPF<sup>4</sup>

Protect exterior plastics and trim from oxidation, harmful UV rays, strong detergents, and fading. Protect a wide variety of vinyl films, clear bra, as well as plastic trim from environmental factors.



4

3

2

1



# immortal™

Instant Self-Healing  
PPF

## GLOSS 2.0

A smarter film that works like you do.

The next generation of our high-performance gloss PPF is here: Immortal Gloss 2.0. While it retains all the self-healing, ultra-glossy, and stain-resistant performance of the original Immortal Gloss, we engineered several smart upgrades to improve installation precision, product protection, and shop workflow.

What's New in Gloss 2.0?

New Cap Sheet – Made to fit the process, not inhibit it. Gloss 2.0 debuts a new tinted cap sheet, designed to alleviate all the typical pains of having to deal with one:

- Doesn't need to be peeled before cutting! It's fully compatible with plotter blades.
- Minimises static electricity buildup when removing the cap sheet, protecting the plotter's motherboard from static discharge, greatly reducing contamination risk and making the film easier to handle.
- Less creasing while plotting large patterns
- Prevents film tunnelling (rippling or lifting that may occur from improper storage and handling)
- Features a subtle colour tint, clearly indicating where it has been removed and where it remains – making final prep easier and faster.

The new cap sheet continues to guard against the orange peel effect during shipping and storage, ensuring the iconic Immortal gloss finish remains intact and showroom-perfect. We believe in progress that respects your craft. Because a great film should feel just as satisfying to install as it does to drive away with.



PROTECTION FROM ROCK CHIPS, SWIRLS, SCRATCHES, BUGS, BIRD DROPPINGS

NON-YELLOWING

ANTI-FOULING

SOLVENT AND UV-RESISTANT

SELF-HEALING FROM AS LOW AS 0°C

HIGHLY HYDROPHILIC, STAIN RESISTANT, SELF-CLEANING

EXTREMELY LOW ORANGE PEEL EFFECT

PERFECT TRANSPARENCY AND A HIGH-GLOSS FINISH

EASY INSTALLATION





# immortal™ Glass

Your vehicle and travels have just gotten safer. Again.  
We're proud to complete the ultimate automotive protection lineup  
with Immortal™ Glass!

Immortal™ Glass will protect your windshield even from hard impacts at highway speeds. The film absorbs the majority of rock chips' kinetic energy and prevents damage to the glass. All this while retaining perfect optical clarity, ensuring a comfortable driving experience and safety. Additionally Immortal™ Glass reduces glare and blocks 99% of UV rays.

Immortal Glass is a specialised protective film designed and developed with driving safety as the first priority. The TPU-based shape memory polymer combines exceptional clarity and silky smoothness of PET, with the ease of installation and self-healing properties of traditional TPU.

The advanced polymer also packs self-healing capabilities, allowing protection against wiper scratches and extending its durability especially compared to typical PET-based films. Another clear advantage is the ease of installation, as in contrast to PET, Immortal™ Glass does not require any baking prior to installation.

**HIGH IMPACT ABSORPTION AND SCRATCH RESISTANCE**

**BEST-IN-CLASS OPTICAL CLARITY & GLARE REDUCTION**

**HEAT-ASSISTED SELF-HEALING**

**99% UV REJECTION**

**HYDROPHOBIC SELF-CLEANING COATING**





CARPRO™



# immortal™

Instant Self-Healing  
PPF

Immortal™ Instant Self-Healing PPF protects the paint surface, even from hard impacts at speed, while its thick self-healing layer makes all lighter scratches and swirls disappear before you even get the chance to notice.

HAVE  
NO  
FEAR

SCRATCH ME  
IF YOU CAN



# immortal™

Self-Healing  
PPF

## MATTE

Immortal™ PPF also comes in Matte! Matte car paints are usually horrendously expensive and a nightmare to maintain. Immortal™ solves this by allowing you to convert any painted surface to a beautiful matte finish, with all the protection and performance!

A matte surface is essentially an infinite number of scratches going in all directions, so Immortal's Instant Self-Healing effect isn't even necessary here, however the film will still heal deeper visible scratches which penetrated the matte finish, with a little heat from a heat gun or hot water.

CONVERTS SURFACES TO A BEAUTIFUL MATTE FINISH

PACKS ALL THE PROTECTION AND PERFORMANCE OF IMMORTAL GLOSS

SMOOTH TO THE TOUCH

HEAT-ASSISTED HEALING OF DEEPER SCRATCHES







# immortal™

Instant Self-Healing  
PPF

## BLACK GLOSS

Our acclaimed Immortal™ PPF now available in black!

IMMORTAL Black Gloss can restyle any vehicle's appearance with a premium high-gloss black finish while offering protection against rock chips, scratches, insects, bird droppings, road oils, yellowing, and watermarks.

Black Gloss packs all the performance features of Immortal PPF, including the incredible instant self-healing properties. It is warranted for 10 Years against delamination, yellowing, bubbling and cracking.

HIGH GLOSS BLACK FINISH

PROTECTION FROM ROCK CHIPS, SWIRLS, SCRATCHES, BUGS,  
BIRD DROPPINGS

INSTANT SELF-HEALING

HIGHLY HYDROPHOBIC, STAIN RESISTANT, SELF-CLEANING





# immortal™

Self-Healing  
PPF

## CARBON

IMMORTAL Carbon will transform any panel into a beautiful carbon fiber weave while offering protection against rock chips, scratches, insects, bird droppings, road oils, yellowing, and watermarks.

It beautifully mimics the depth of real carbon weave making it almost indistinguishable from the real thing! Immortal Carbon packs all the performance features of Immortal PPF and is warrantied for 7 Years against delamination, yellowing, bubbling and cracking.

Immortal PPF is a high performance, self-adhesive, clear-coated aliphatic polyurethane film. It has exceptional elongation properties for ease of application. Immortal is a very low surface energy film designed to resist staining and offer superior environmental resistance and gloss retention. Immortal is coated with Ashland ultra-clear high performance acrylic adhesive resistant to delamination and with excellent adhesion on a broad range of surfaces. It will not damage paint or leave behind residue upon removal.

HIGH GLOSS CARBON FIBER FINISH

PROTECTION FROM ROCK CHIPS, SWIRLS, SCRATCHES, BUGS,  
BIRD DROPPINGS

HEAT-ASSISTED SELF-HEALING

HIGHLY HYDROPHOBIC, STAIN RESISTANT, SELF-CLEANING





# WHY Immortal™?

## 01 INSTANT SELF-HEALING

Immortal™ PPF instantly self-heals in temperatures as low as 0°C!

This means you won't have to use heat guns or hot water to fix any scratches – you'll simply never notice them! There are already many self-healing films available but don't be fooled. Only a handful are able to heal in room temperatures, and none can match the thickness of Immortal™'s 20 micron self-healing layer.

Immortal	COMPETITION
no heat required healing begins at 0°C	heat-activated – requires a heat gun
20 micron instant self-healing layer	max 10 micron or none at all
heat-assisted self-healing is still possible  for scratches deeper than the 20 micron instant self-healing layer	

## 02 PERFECT SURFACE FINISH

We have built our success on gloss, slickness, hydrophobic self-cleaning, so it should be no surprise Immortal™ PPF excels in all of these qualities.

Even the most experienced PPF installers are in awe of Immortal™ PPF's surface finish. Plus, it's all covered by warranty.

Immortal	COMPETITION
perfectly smooth finish: near zero orange peel	lack of top liner leading to surface imperfections
extreme gloss, clarity and hydrophobicity, <u>all covered by warranty</u>	varying performance and often limited warranty
perfect compatibility with industry-leading C.QUARTZ coatings	no PPF manufacturer can realistically compete with C.QUARTZ

## 03 EVERYTHING ELSE

We made sure the film itself, as well as the entire ecosystem around Immortal™ PPF guarantees perfect installation and unrivaled customer experience.

There is only one thing for you to do:  
**Experience Immortal™ PPF for yourself!**

Immortal	COMPETITION
no adhesive residue: easy removal at a lower cost	frequent hard-to-remove adhesive residues
key components manufactured in USA	cheaper substitutes are often used
available only to a carefully selected network of skilled installers	often poorly installed due to uninhibited availability
installers are provided with dedicated software and an ever expanding database of templates fitting any car	



immortal

# Squeegee KIT

A set of 5 PPF-dedicated soft squeegees in various shapes and sizes allowing easy access to all curves, corners, and gaps.

Each squeegee has a built-in magnet, which allows it to be quickly stowed away directly on the car body as you work.

The soft and flexible rubber, combined with a smooth edge design, prevent any scratches or marring.

KIT OF 5 PPF SQUEEGEES

VARIOUS SHAPES AND SIZES

BUILT-IN MAGNETS FOR RAPID ACCESS

FLEXIBLE RUBBER BLADES

Kit contains:







# immortal

Instant Self-Healing  
PPF



immortal

## ImmoGel

We already made sure CARPRO Immortal Instant Self-Healing PPF is easy to work with, but we want your experience to be as smooth as possible.

CARPRO IMMORTAL ImmoGel is our new Immortal-dedicated concentrated PPF positioning lubricant. When diluted and sprayed over the PPF adhesive, its high viscosity improves moisture distribution and therefore allows easy positioning and squeegeeing with minimised risk of haze or spots after application.

HIGH VISCOSITY, QUICK EVAPORATION

ELIMINATES HAZE AND SPOTTING

EASY SQUEEGEEING



Available in:  
50mL / 500mL / 1L / 4L



# immortal™ CUT

PPF PATTERN SOFTWARE

We are proud to announce the most desired companion to our new Immortal Instant Self-healing PPF line – Immortal CUT Cutting Software.

Immortal CUT is an essential tool for PPF installation efficiency. Its main feature is a complete database of templates for automotive exteriors AND INTERIORS for all those pesky interior piano blacks!

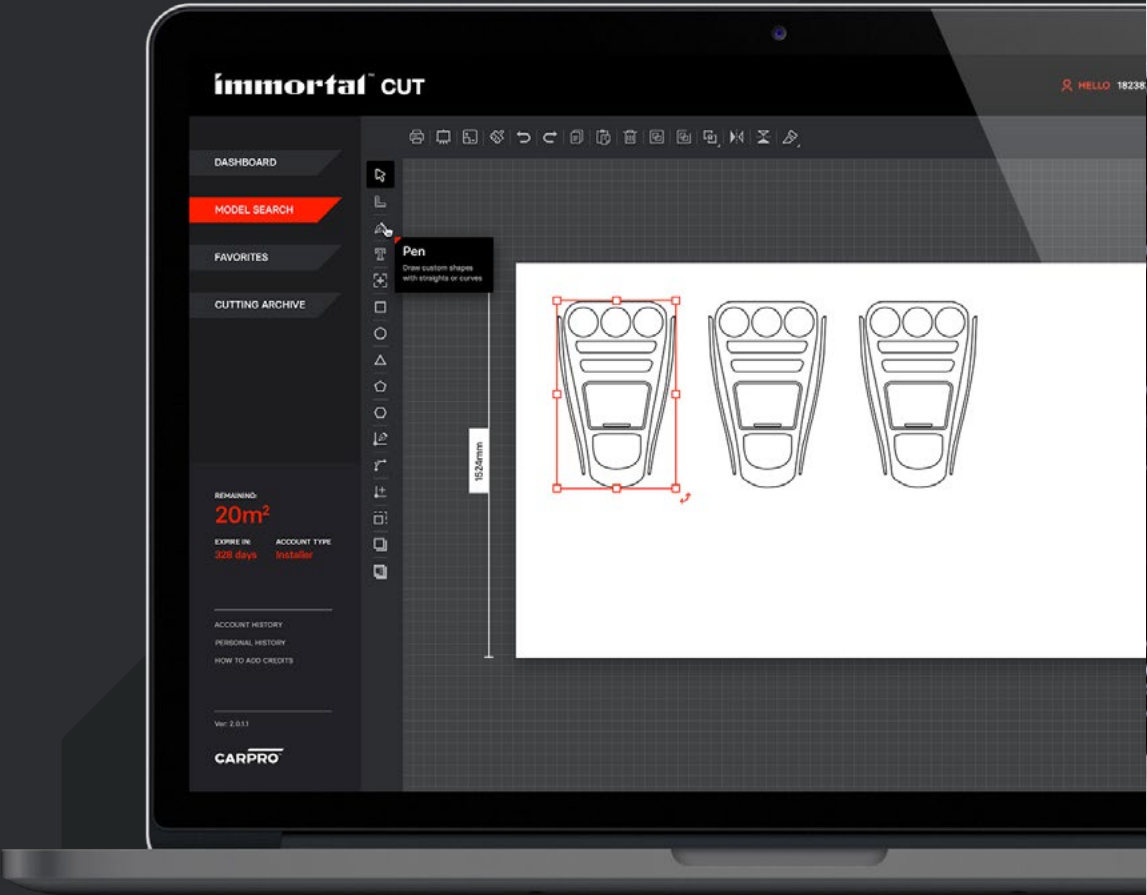
Simply select which car make, model, and version you wish to cut for, and Immortal CUT will automatically select and efficiently arrange all the required templates. If any adjustments are still needed, it is packed with custom editing functionalities, tailored to the needs of PPF installers. Then simply hit the button and let your plotter do the magic.

CARPRO Immortal CUT is available to all our approved installers for free. Every purchased roll of Immortal PPF will allow to unlock adequate additional square metres of cutting area.

FREE FOR EVERY IMMORTAL INSTALLER!



System Requirements:  
**Windows 10.0 or newer\*** / **Internet connection**  
\*OSX users may launch on virtualised machines





Introducing the newest extension  
to the Immortal line

UVX Nano-ceramic Heat-rejecting  
Window Film.

# UVX



immortal

# UVX

Introducing the newest extension to the Immortal line – CARPRO UVX Nano-ceramic Heat-rejecting Window Film.

Heat-insulating window films are designed to enhance the glass’ ability to reject solar energy in the forms of infrared, ultraviolet and visible light. UVX is packed with the newest ceramic nanotech allowing powerful IR heat insulation, blocking up to 99% of UV radiation, and reducing glare. On top of that, UVX comes in 5 levels of Visible Light Transmission (5%, 20%, 35%, 50%, 70%, ) allowing you to fine-tune the aesthetics of your car, as well as your sense of privacy inside.

Additionally, in contrast to metalised films, the nano-ceramic structure does not interfere with radio signal. UVX is not a mechanical protection film, however we’ve still equipped it with an anti-scratch layer which will prolong its life.

UVX comes in 5 levels of VLT (5%, 20%, 35%, 50%, 70%), as 1520mm x 30m rolls and is fully compatible with all Immortal installation accessories.

VERY HIGH TSER (TOTAL SOLAR ENERGY REJECTED)

REDUCES GLARE

99% IR AND UV REJECTION

DOES NOT INTEFERE WITH RADIO SIGNAL

MORE EFFICIENT COOLING

10-YEAR WARRANTY



UVX comes in 5 levels of VLT (visual light transmission) and allows you to fine tune both the aesthetics and performance of the film.

	UVX <sup>5</sup>	UVX <sup>20</sup>	UVX <sup>35</sup>	UVX <sup>50</sup>	UVX <sup>70</sup>
VLT	5%	25%	35%	50%	72%
VL REFLECTION	6%	6%	6%	6%	10%
UV REJECTION	99%	99%	99%	99%	99%
IR REJECTION	95%	96%	94%	96%	94%
TSER	71%	67%	65%	59%	52%
SHGC	0,29	0,33	0,45	0,41	0,48
SC	0,34	0,38	0,52	0,48	0,56
GLARE REDUCTION	39%	39%	39%	39%	39%
SCRATCH-RESISTANT LAYER	3 H	3 H	3 H	3 H	3 H

- VLT** – Visual Light Transmission – the lower the number, the darker the film
- TSER** – Total Solar Energy Rejected – the higher the number, the more solar energy (visible, IR, UV) is reflected or absorbed
- SHGC** – Solar Heat Gain Coefficient – the lower the SHGC, the less solar heat transmitted and the greater the shading ability
- SC** – Shading Coefficient – the lower the SC, the less solar heat transmitted and the greater the shading ability





# D.QUANTZ

Functionalised nano-diamond  
ceramic coatings



# D.QUARTZ

## Professional

Meet CQUARTZ's toughest companion DQUARTZ:  
a functionalised nano-diamond ceramic coating.

In the pursuit of perfection, we have developed a truly innovative formula based on a siloxane nano-diamond fusion and a proprietary silicon resin, which make DQUARTZ the first ever coating to offer mechanical resistance to swirls and scratches.

DQUARTZ can be used as a standalone coating for automotive paint and will produce the same results when used on metals. Beyond the hardness improvements, it packs strong chemical and environmental resistances, as well as our greatest pride and joy: gloss and self-cleaning.

Nevertheless, during testing we have found DQUARTZ to truly excel as a base coating topped with CQUARTZ Professional, which increases hardness by an extra point on the pencil scale and brings CQ Professional's outstanding performance into the mix.

**INCREASE SURFACE HARDNESS BY UP TO 5 POINTS**

**HIGHLY HYDROPHOBIC**

**EXTREME ABRASION RESISTANCE, UV- AND SOLVENT RESISTANCE**



Available:  
**TO CERTIFIED INSTALLERS ONLY**





# DQUARTZ GO

The groundbreaking DQUARTZ nanodiamond technology, now available in an easy-to-use DIY package.

We are proud to introduce DQUARTZ Go – the outstanding professional-grade coating that has been reformulated for easy use by everyday consumers. Without any sacrifices to the coating's durability and excellent hardness-increasing properties, we've tweaked the formula for increased smoothness and easy application.

DQ Go retains its exceptional hardness, effectively helping to reduce swirls and wear, ensuring long-lasting protection. We've introduced a smoothing formula based on fluoropolymers which not only maintains the coating's hardness but also provides a satisfyingly smooth touch.

If you're seeking outstanding protection, a smoother finish, and the convenience of DIY application, DQUARTZ Go is the ideal choice.

INCREASE SURFACE HARDNESS BY UP TO 5 POINTS

HIGHLY HYDROPHOBIC

ABRASION, UV, AND SOLVENT RESISTANT

Available in:  
30mL / 50mL



# DQUARTZ GForce

High clarity, super-durable hydrophobic glass coating based on DQUARTZ nanodiamond technology

Dear car enthusiasts, it's time to elevate your window protection. We are proud to introduce the brand new DQUARTZ GForce, a technological revolution that will take your driving experience to new heights!

We have redesigned hydrophobic and adhesion tech to ensure a strong bond with your windows, allowing water droplets to effortlessly glide off, delivering outstanding hydrophobic effects even at speeds below 50 km/h. Say goodbye to blurred vision on rainy days – DQ GForce offers the perfect solution. GForce incorporates the latest DQ technology with nano diamond particles, providing unprecedented scratch resistance. This coating not only restores the luster of your windows but also shields them from scratches and dirt, ensuring your windows stay spotless.

DQUARTZ GForce not only delivers outstanding aesthetics but also greatly enhances your driving safety. It is an unparalleled choice that allows you to drive with confidence in clarity of vision, whatever the conditions.

EXTREME HYDROPHOBICITY

WIPER ABRASION RESISTANCE

UV & CHEMICAL RESISTANCE

Available in:  
10mL KIT / 50mL





# C. QUARTZ

The Legend.





C.QUARTZ

# DLight

DLight is our new coating formulated for long-lasting UV protection of a variety of surfaces, especially those most vulnerable, such as headlights, PPF, and other plastics.

DLight is enhanced with powerful UV absorbers and light stabilisers for a wider rejection spectrum of 260-360nm, blocking the most harmful UVA and UVB light. This advanced protective layer shields delicate surfaces preventing yellowing, fading, and cracking over time. Engineered to enhance durability and clarity, the coating not only preserves the pristine appearance of headlights, PPF, and plastic trims but also ensures long-lasting performance by protecting from loss of gloss, discolouration, and improving scratch resistance.

CQUARTZ DLight can also be used on automotive paintwork or as a top coat for other coatings, where additional UV protection is needed. It may even extend their durability, especially in hotter climates. With easy application, superior resistance to environmental damage and up to 3 years of its UV-blocking capabilities, DLight is the ultimate solution for ensuring longevity of surfaces prone to UV damage.

**DURABILITY: UP TO 3 YEARS**

**BLOCKS UVA & UVB LIGHT**

**IMPROVED SCRATCH RESISTANCE**

**ANTI-STATIC & ANTI-DUSTING**

**PREVENTS YELLOWING, FADING & CRACKING OF PLASTICS**

**HYDROPHOBIC SELF-CLEANING**

**EASY-TO-INSTALL**

Available in:  
10mL / 30mL / 50mL / 100mL





C.QUARTZ

# Finest RESERVE

CQUARTZ Finest Reserve is our state-of-the-art flagship coating suited exclusively to the most skilled, hand-picked installers in the world.

It is an extremely complex hybrid blend of SiO<sub>2</sub>-infused epoxy nanoparticles developed to carry the torch for the ultimate development of the CARPRO line of advanced professional coatings. This next-gen technology utilizes an advanced hybrid nano-structural composition, which bridges the gap between ceramic and organic materials, creating an extremely high-gloss, dense coat.

Additionally this results in an extremely durable, thick coating with advances in a variety of attributes and unlike anything that has come before it. With our advanced “SiO<sub>2</sub>poxi” tech, the new Finest Reserve is extremely resistant to water spots, acids, solvents, ice, oils, dirt, UV, and all manner of environmental attacks.

EXTREMELY DENSE AND DURABLE

UNPARALLELED PERFORMANCE

HIGHLY HYDROPHOBIC: 110°; LOW SLIDING ANGLE: 10°



Available:  
TO CERTIFIED INSTALLERS ONLY





C.QUARTZ

# Professional

The New 2020 CQUARTZ Professional has been designed for enhanced protection of clear coat painted surfaces as well as plastic components.

Improving on one of our flagships is both a true passion project and an endeavour that demands great care. After all we are altering a formula trusted by some of the best installers worldwide. It was their input however, that led us to significantly enhancing CQPRO's ability to endure salty environments and harsh winters, greatly increasing its durability compared to the previous formula. With a low viscosity and environmentally friendly solvent, CQUARTZ Professional is an enhanced fast-curing version of the coating already loved by the best professionals. Hydrophobic and oleophobic properties are excellent, providing resistance to oils, water, silicones, acids, alkyls and salts.

INCREASED RESISTANCE TO SALT & CHEMICALS

IMPROVED WATER SPOT RESISTANCE

EXTREME DURABILITY, GLOSS & SLICKNESS



Available:  
TO CERTIFIED INSTALLERS ONLY





C.QUARTZ

# CQ.UK 3.0

CQ.UK is our most refined consumer-grade coating. As the third iteration of the world-renowned nano-ceramic coat, it packs the highest performance figures ever, with increased resistance to salt buildup, chemical resistance of pH 3-13 and extreme temperature tolerance.

One of the key requirements in our R&D process was ease of use, so that CQ.UK could still be considered a consumer-grade product and would not require lab-like application conditions. After tireless months of extra development and testing, we are proud to say, CQ.UK is easy to apply in a temperature range of 3-40°C!

At the same time, we kept the classic CQUARTZ wipe-on/wipe-off application, so it can be buffed immediately or left for a few minutes, while still buffing off super clean and with ease. It does not leave a grabby, sticky surface, which makes it the best choice for professionals and enthusiastic detailers alike.

**EASY TO APPLY IN A WIDE RANGE OF TEMPERATURES**

**HIGHEST-PERFORMING CONSUMER-GRADE COATING**

**GREAT CHEMICAL RESISTANCE OF pH 3-13**

Available in:  
10mL / 30mL / 50mL / 100mL





# C.QUARTZ SiC

To celebrate the end of the decade and ten years of CQUARTZ, we are proud to introduce the next step in evolution. After intense research, development and testing, CQUARTZ SiC is ready to continue where TiO<sub>2</sub> left off.

As the name suggests, this new formula incorporates SiC (Silicon Carbide) for added chemical resistance. We have also greatly improved the ease of use, resistance to water spotting and even amped up the gloss and depth. Finally, the ridiculous level of slickness will leave you thrilled with the results.

**EXTREME SMOOTHNESS & DEEP GLOSS**

**VERY EASY APPLICATION IN ANY TEMPERATURE**

**ACID AND ALKYL CHEMICAL RESISTANCE pH 3 - 13**

Available in:  
10mL / 30mL / 50mL / 100mL





CQUARTZ

# Lite 2.0

**Re-Engineered for Effortless Application, Anywhere.**

CQUARTZ Lite 2.0 has been completely re-developed to deliver the easiest and most versatile ceramic coating experience yet. Designed for both enthusiasts and professionals, this new formula ensures smooth, consistent application in a wide range of environments: from cool, shaded garages to hot, sunlit driveways. Rigorously tested in temperatures from 10°C to 50°C,

Lite 2.0 performs flawlessly whether you're indoors or outdoors, in sunshine or light wind. This next-generation coating provides enhanced durability of up to 2 years with proper care, offering excellent resistance to chemicals, environmental fallout, and UV damage. Like all CQUARTZ coatings, it maintains the brand's hallmark strength in chemical resistance while delivering a rich gloss, sleek finish, and impressive hydrophobic performance.

CQUARTZ Lite 2.0 is the ideal entry-level ceramic coating: perfect for those looking to experience the beauty, protection, and ease of the CQUARTZ system in its most accessible form.

**EASY APPLICATION IN ANY CONDITIONS: FROM 10°C TO 50°C**

**ENHANCED DURABILITY OF UP TO 2 YEARS**

**SUPERIOR CHEMICAL AND UV RESISTANCE**

**DEEP GLOSS AND SLICK HYDROPHOBIC FINISH**

**FOR ENTHUSIASTS, MOBILE/VALET DETAILERS AND PROS**

Available in:  
100mL KIT / 500mL





C.QUARTZ

# Fabric 2.0

CQUARTZ Fabric 2.0 is an improved version of our renown dedicated, breathable fabrics coating.

In CQ Fabric 2.0, we've increased performance, while focusing heavily on the ease and comfort of application. We've minimised levels of VOCs and cut down drying times by a factor of 8! Fabric's harsh solvent odors have also been removed.

Traditional coatings make fabrics feel stiff and can clog the weave preventing breathability. We have developed nanoparticles small enough to attach to individual fibers, delivering superior performance characteristics without compromising the look, feel or comfort of the fabric and without clogging the fabric weave.

CQUARTZ Fabric 2.0 can be used on any material and performs great on cabrio soft tops. It is loved by detailers and sneakerheads alike!

**DOES NOT AFFECT THE TACTILE QUALITIES OF THE FABRIC**

**BREATHABLE, SUPER-HYDROPHOBIC, UV-PROOF, TRANSPARENT**

**WATER & STAIN RESISTANT**



Available in:  
50mL / 100mL / 500mL







C.QUARTZ

# Leather 2.0

We are proud to announce CQUARTZ Leather 2.0, which is a natural evolution of the world-renowned leather and vinyl coating – CQ Leather.

The new formula is water-based and therefore safe to use on all types of leather, including Nappa leather. The new Leather 2.0 only improves on the renown hydrophobic and self-cleaning properties, as well as resistance to UV, denim dye coloring, abrasion and stains.

RESISTANT TO UV, ABRASION, DYE TRANSFER, STAINS AND MARKERS

SELF-CLEANING, HYDROPHOBIC

PRESERVES LEATHER COLOR, NO VOC

Available in:  
30mL / 50mL / 100mL







C.QUARTZ

# Blackout

BlackOut utilizes polysiloxane technology merged with a solvent-based acrylic resin to create an incredibly durable and stunning satin-like appearance for tyres, rubber, and unpainted resin materials.

The coating is far more durable than traditional tire dressings while its weak solvent base allows it to be very gentle on tyres with no sticky side effects of silicone based products. This unique formula also inhibits the deterioration of rubber and protects from UV rays. BlackOut even restores the depth, and luster of unpainted resin parts that have deteriorated over time.

SELF-CLEANING, HYDROPHOBIC, SALT, CHEMICAL & UV-RESISTANT

ABRASION RESISTANT

PRESERVES BLACK SATIN APPEARANCE

Available in:  
50mL / 100mL





CQUARTZ

# Gliss 2.0

CQUARTZ Gliss 2.0 is the ultimate topcoat solution for car enthusiasts seeking unparalleled smoothness and enhanced protection. Building on the success of the original, Gliss 2.0 delivers extreme slickness, providing a super-slick surface like never before.

With enhanced oleophobicity, it repels oils and contaminants, while offering superior defence against water spots thanks to a water-contact angle of  $>110^\circ$ .

Gliss 2.0's advanced formula is also fully compatible with both CQUARTZ and DQUARTZ coating lines, making it the perfect top layer to elevate the performance and longevity of your vehicle's protection and beauty.

IMPROVED SLICKNESS

INCREASED DURABILITY

HIGHLY OLEOPHOBIC FOR BETTER WATER SPOT PROTECTION

WORKS AS A STANDALONE COATING

EASY-TO-INSTALL

GREAT AS A TOP COAT FOR CQ & DQ

SAFE ON MATTE AND SATIN PAINTWORK

Available in:  
30mL / 50mL / 100mL





C.QUARTZ

# DLUX

Treat alloy wheels, faded plastic, and rubber trim with CQUARTZ DLUX to restore their rich, glossy finish, and give them the lasting hydrophobic nanotechnology protection these surfaces deserve.

Such surfaces have to withstand a lot of abuse so CQUARTZ DLUX was given a thicker film build compared to other CQUARTZ coatings, and a 50% silica content by volume. When applied to plastic and rubber trim, CQUARTZ DLUX helps restore their gloss and color, while protecting them from future fading. On painted, polished or chromed wheels, DLUX resists brake dust and road grime, eliminating the need for dedicated cleaners.

**EXTREMELY DURABLE WHEELS & TRIM COATING**

**RESTORES AND PROTECTS FADED TRIM**

**SELF-CLEANING, HYDROPHOBIC, SALT, CHEMICAL & UV-RESISTANT**

Available in:  
30mL / 100mL







C.QUARTZ

# Skin

CQUARTZ Skin was developed for application to a wide variety of paint protection films, vinyl films, clear bra, as well as soft and hard plastic trim.

Paint protection films' and plastics' greatest enemy is UV damage, so CQUARTZ Skin was designed from scratch with heavy UV blockers. With both UVA and UVB resistant particles impregnated into the nano-structure of CQUARTZ Skin, you can be assured you have provided the best protection possible for your wrapped and plastic surfaces.

CQUARTZ Skin also offers resistance to most chemicals, salts, environmental damage as well as provides excellent UV protection. This highly specialized nano-coat adds a rich appearance to the surface along with unbelievable water and dirt repellency we expect to last for years.

EXTENDS LIFE OF GLOSS & MATTE FILMS

UV RESISTANT, HYDROPHOBIC

VERY EASY TO USE

Available in:  
50mL



# Essence Plus

Essence+ is a unique SiO<sub>2</sub> nano coating made from a distinct blend of ceramic coat repair agents, high gloss quartz resins, and hydrophobic nanoparticles.

The idea behind the development of Essence+ was an extremely glossy, semi-permanent nano-agent for repairing durable ceramic coatings, which may have been abused or mistreated over the course of time. It is able to fill ceramic coating defects, improve its gloss and performance and even extend its lifetime.

HIGH GLOSS JEWELING COAT

REPAIRS NANO COATINGS

ADDS A LAYER OF SiO<sub>2</sub> QUARTZ PROTECTION

Available in:  
250mL / 500mL / 1L / 4L





# Release

Sometimes the pursuit of practicality and efficiency leads you to completely new discoveries. We're happy to introduce Release – our first wax-based nano-sealant dedicated to the protection of fresh ceramic coatings during their drying period.

Release is designed primarily for busy detailing studios and impatient detailers, who want to avoid the pains of ceramic coating drying times. Every coating requires a period of time, when water contact, bugs, and bird bombs have to be avoided. CARPRO Release mitigates that by protecting the coating, allowing freshly coated cars to fully dry without the wait.

Release couldn't be any simpler to apply, and it can also be used as a standalone quick detailer! Release is the absolute easiest to use. Our sealants like Reload and Elixir contain silica, while Release doesn't. This means release won't last as long and doesn't offer as much protection. It is similar to ECH2O, but doesn't require any dilution and is even easier to apply, as it doesn't require a 2nd buff.

**SHORT TERM PROTECTION FOR CERAMIC COATINGS**

**EXTREMELY FAST & EASY TO APPLY**

**CAN BE USED AS A STANDALONE QUICK DETAILER**



Available in:  
50mL / 500mL / 1L / 4L



CARPRO™

# COATINGS

SPEC SHEET v 2026



DURABILITY	3 years + *	2 years +	1 year +	3 years +	2 years +	2 years	18 months	up to 2 years	1 year	3 years	1 year	1 year	6 months	1 year	6 months	3 months	1 month	3 months
PH-RESISTANCE	2 - 14	3 - 13	3 - 13	3 - 13	3 - 13	3 - 13	3 - 12	4 - 12	5 - 12	3 - 12	5 - 12	5 - 12	5 - 12	5 - 12	5 - 12	4 - 12	4 - 12	4 - 12
FLASHING TIME / 20°C	5 min	5 - 7 min	30 sec	3 - 4 min	3 - 5 min	2 - 5 min	3 - 5 min	5-15 min	1 - 2 min	3 - 5 min	30 - 60 sec	2 - 3 min	instant	instant	-	-	-	10 sec
MIN AND MAX TIME BETWEEN LAYERS	1 h	1 - 4 h	30 min	4 h	4 h	1 h	1 h	1 h	1 h	1 h	1 h	1 h	1 h	4 h	-	-	-	-
DRYING TIME UNTIL WATER CONTACT	4 h / 8 h **	12 h	4 h	24 h	24 h	24 h	24 h	48 h	24 h	24 h	24 h	24 h	24 h	24 h	24 h	3 h	0	0
DRYING TIME UNTIL FULL HARDNESS	7 days	7 days	48 h	7 days	7 days	7 days	7 days	7 days	7 days	7 days	7 days	7 days	7 days	7 days	24 h	0	0	0
IR LAMP IMPROVEMENT	yes	yes	yes	yes	yes	yes	yes	yes	yes	yes	yes	no	no	no	yes	no	no	no
IR TIME & TEMP	10 min / 60°C	10 min / 60°C	10 min / 60°C	10 min / 60°C	10 min / 60°C	10 min / 60°C	10 min / 60°C	10 min / 60°C	10 min / 60°C	10 min / 60°C	10 min / 60°C	-	-	-	10 min / 60°C	-	-	-
HARDNESS IMPROVEMENT	+4 H	+3 H	+1 H	+2 H	+2 H	+2 H	+2 H	0	0	+3 H	0	0	0	0	0	0	0	0
WATER SPOT RESISTANCE	high	high	high	high	high	high	high	low	medium	high	high	high	high	-	medium	high	high	medium
REMOVABLE WITH	polishing	polishing	polishing	polishing	polishing	polishing	polishing	polishing	high pH wash	polishing	polishing	high pH wash	high pH brush	IPA 100%	high pH wash	high pH wash	high pH wash	high pH wash
GLOSS	high	high	-	high	high	high	high	high	high	high	-	high	low	low	-	high	high	high
SMOOTHNESS	low	low	-	high	high	low	high	low	high	medium	low	medium	-	medium	-	high	high	low

\*B-QWARTZ when used as a base coat for CQFR / PRO extends their durability and warranty by 2 years.    \*\* Above 20°C / Below 20°C.

**NOTE:** Specification may vary depending on temperature and humidity.



03

CARPRO™

# Maintain

Washing

Paint rejuvenation

Sealants

Jewelling





# MadMatte

## Advanced Protection for Matte & Satin Finishes

MadMatte is a specialised silica-based spray sealant engineered exclusively for matte and satin paint finishes, PPF, vinyl wraps, and wheels. Designed to protect without altering the delicate texture of non-gloss surfaces, it enhances depth and richness while preserving the authentic matte or satin appearance.

With its advanced hydrophobic formula, Matte Sealant repels water, dirt, and contaminants – making maintenance easier and safer for delicate finishes. It can be used as a standalone protectant or to boost and prolong the hydrophobic performance of existing ceramic coatings. CARPRO MadMatte delivers long-lasting defence against environmental elements, prevents water spots, and keeps your vehicle's finish looking clean, consistent, and true to its original character.

**MAINTAINS TRUE MATTE OR SATIN APPEARANCE**

**PROVIDES DURABLE PROTECTION FOR MATTE PAINT, PPF, AND VINYL**

**BOOSTS HYDROPHOBIC PROPERTIES FOR EASY CLEANING AND MAINTENANCE**

**PROTECTS AGAINST WATER SPOTTING AND SURFACE CONTAMINATION**

**FOR COATED AND UNCOATED SURFACES**



Available in:  
50mL / 100mL / 500mL / 1L / 4L



# SkinCare KIT

Proper care can keep your leather in its best condition and prevent premature wear. CARPRO SkinCare KIT has everything a car care enthusiast needs to treat and regularly maintain leather surfaces without changing their appearance.

When the pores of leather get clogged with soiling it can cause the leather to deteriorate prematurely. Our leather cleaner used with our designated leather brush gently and effectively clean the pores and surface of your leather to prepare it for conditioning.

Due to UV rays leather can age prematurely, crack, fade and become dry. Our conditioner applied with our dedicated applicator thoroughly covers even heavily textured leather to restore the soft smooth feeling, protect from UV damage, and keep a natural appearance.

SAFE ON ALL TYPES OF LEATHER

PROTECTS FROM SWEAT, LIQUIDS AND LIGHT CONTAMINATION

DOESN'T ALTER THE LOOK OF THE LEATHER

Kit contains:

**Cleanse**  
150 mL | 5 FL OZ

**Lotion**  
150 mL | 5 FL OZ

**Leather Brush**  
x1

**MicroBuff Applicator**  
x1

**Terry Weave Towel**  
x1

**Suede MF Towel**  
x1







# Reload 2.0

The time has finally come. You've asked, we've been working tirelessly. Here is the long-awaited update to our legendary silica sealant: Reload.

Preserving the same ease of application, we managed to improve everything about Reload's performance. In essence: more gloss, extended durability, improved chemical and environmental resistances.

Originally formulated to maintain the protection and finish quality of CQUARTZ coatings, Reload has also proven itself as a standalone sealant, where it can offer up to 3 months of protection on daily drivers. Reload's easy to use waterborne formula can be applied to all vehicle surfaces (even when damp), making it perfect for quickly topping up your vehicle's protection and shine.

**SILICA + SILOXANE SPRAY SEALANT**

**SUPER HYDROPHOBIC, SELF-CLEANING**

**IMPROVED GLOSS & SLICKNESS**

**IMPROVED WATER SPOT & CHEMICAL RESISTANCE**



Available in:  
50mL / 100mL / 500mL / 1L / 4L



# DarkSide

CARPRO DarkSide is our new ready-to-use, highly concentrated tyre and rubber sealant.

DarkSide's 60% polydimethylsiloxane formula allows for a super quick and easy application with our dedicated tyre or microfibre applicators, leaving a beautiful satin shine look. Needless to say, it is equipped with all of our famous self-cleaning, hydrophobic properties, as well as UV and chemical resistance, prolonging the new look of your tyres.

Every quick application of DarkSide will last up to 3 months!

HIGHLY HYDROPHOBIC SATIN BLACK SHINE

3+ MONTHS DURABILITY

UV-RESISTANT

LOW VOC



Available in:  
50mL / 500mL / 1L / 4L







# InnerQD

InnerQD is a quick and easy, daily anti-static and anti-microbial detailing spray.

Use it on all interior surfaces to clean light contamination, finger prints, dust and inhibit the electrostatic adhesion of dust particles, as well as the growth of pathogenic microorganisms.

InnerQD's formula is designed to leave a dry, satin, streak-free anti-static layer which will reduce the overall amount of dust accumulated over time.

**ANTI-STATIC AND ANTI-DUSTING PROPERTIES FOR UP TO 4 WEEKS!**

**KILLS AND PREVENTS MICROBES FROM GROWING**

**CLEANS LIGHT DIRT**



Available in:  
50mL / 500mL / 1L / 4L



---

# Spotless 2.0

Spotless 2.0 uses an upgraded chemical formula with stronger acids to break down the mineral deposits on the surface before they can etch into the finish, thus negating the need for time consuming polishing, prolonging the life of the paint film.

Spotless 2.0 safely neutralizes hard water spots and stains on plastics, emblems, glass, paint and modern wheels with clear coat. Spotless 2.0 is an essential item for preparing matte paint for coating and/or maintenance. Spotless's proprietary blend of carefully balanced acids safely breaks down mineral deposits on most hard materials, and can even be used on CQUARTZ coatings, helping you to keep your vehicle spot-free.

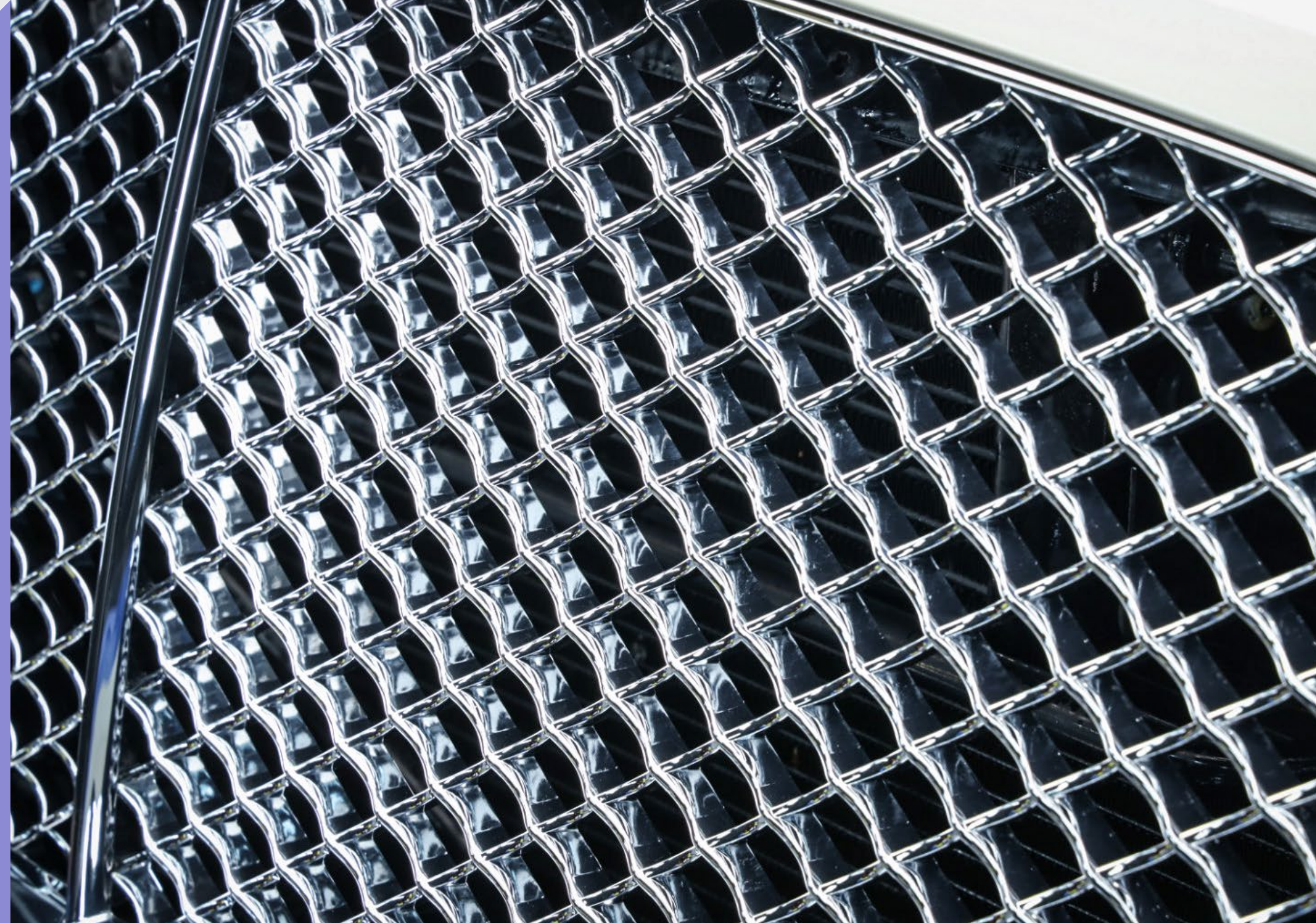
**NEW, UPDATED FORMULA WITH STRONGER ACIDS**

**EFFECTIVELY BREAKS DOWN MINERAL DEPOSITS**

**SAFE TO USE ON A VARIETY OF SURFACES**



Available in:  
50mL / 500mL / 1L / 4L







# EliXir

EliXir is a truly astonishing quick detailer, which takes the gloss and extreme hydrophobicity of ceramic nanotechnology and puts it into a package that couldn't be any easier to use.

Most of our products originate from the feedback of our devout fans. In the case of EliXir, they've taken things to a whole new level and put on the lab coats themselves, asking the question: "what if you just mix a bit of this with a bit of that..?"

Normally, you wouldn't expect this to end well, however, they've stoked us with a real discovery. We have immediately taken things further, refined the formula and EliXir was born. It is a phenomenal quick detailer, that provides extreme depth, gloss and hydrophobic energy to a variety of surfaces, while being just as quick and easy to apply as ECH2O.

**SUPER EASY TO USE**

**EXTREMELY HYDROPHOBIC**

**DEEP RICH GLOSS AND SLICKNESS**



Available in:  
50mL / 500mL / 1L / 4L



# HydrO2

HydrO2 is a revolutionary spray-on silica sealant which combines full nanotechnology protection with a true wipe-less application. Simply spray HydrO2 on to a wet vehicle surface, rinse off, and watch the surface transform before your eyes.

While HydrO2 is a concentrated formula, which can be diluted in many ratios and lasts up to 6 months; HydrO2 Lite is a ready-to-use pre-diluted formula and lasts even over 3 months.

HydrO2 Foam was formulated with hydrophilic glass fibers, fluoropolymers and can be applied to all solid vehicle surfaces. Paint, glass, plastic, wheels, calipers and wheel wells are all easily within reach with HydrO2 Foam. This amazing combination of a rich foam wash and sealant lifts dirt whilst in the merino wool wiping stage, and immediately forms an hydrophobic coating during the rinse phase.

**WIPE-LESS SILICA SPRAY SEALANT**

**UP TO 6+ MONTHS OF PROTECTION ON ALL VEHICLE SURFACES**

**INSTANTLY ENHANCES GLOSS, DEPTH, AND SMOOTHNESS**



Available in:  
50mL / 500mL / 1L / 4L





# Reset

Reset Shampoo was developed as the perfect partner to nanotechnology sealants and coatings with cleaning properties tailored to their unique needs.

Reset utilizes intelligent pH surfactants, which feature the strength of an alkaline cleaner whilst remaining pH-neutral in solution. This helps to break down dirt and traffic films in order to maintain the coating's hydrophobicity. Combined with strong lubrication, easy residue-free rinsing, economical dilution ratio (500:1) and high foaming action, reset is the perfect shampoo for maintaining your CQUARTZ coat's beauty and performance.

INTENSIVE MAINTENANCE SHAMPOO

HIGHLY CONCENTRATED, RICH DENSE FOAM, NO GLOSS ENHANCERS

PERFECT FOR MAINTAINING CQUARTZ COATINGS



Available in:  
50mL / 500mL / 1L / 4L







## ECH<sub>2</sub>O

### WATERLESS WASH & QUICK DETAILER

ECH<sub>2</sub>O is a waterless cleaner and gloss-enhancer designed to work in harmony with ceramic coatings, but at the same time it provides easy cleaning of non-coated or waxed surfaces. Based on a SiO<sub>2</sub> hybrid framework and an eco-friendly organic lubricant solution, ECH<sub>2</sub>O safely cleans and glosses a variety of exterior vehicle surfaces with ease.



## FogFight

### LONG-LASTING ANTI-FOG AGENT

FogFight is a super-hydrophillic coating that prevents the formation of fog and mist on interior glass and mirrors. This coating's unique surface structure prevents condensation from forming on all treated surfaces including windscreens, mirrors, and even optical glass to keep your vision clear.

## Perl

### VERSATILE WATER-BASED SiO<sub>2</sub> COATING

Perl is a water-based SiO<sub>2</sub> multi-use dressing for trim and tyres. Safe to use on all interior and exterior plastic, rubber, vinyl, and modern leather surfaces, Perl offers sophisticated UV-inhibitors and an advanced waterborne acrylic-resin system to provide superior water-repellency over conventional dressings.



## So<sub>2</sub>Pure 2.0

### PHOTOCATALYTIC AIR PURIFYING COATING

So<sub>2</sub>Pure 2.0 is an updated, stronger version of our photocatalytic interior coating, which when exposed to light, actively destroys even the toughest of odors and pollutants, leaving behind nothing but clean, fresh air with a light jasmine scent.







# The 16

Whether you are new to CARPRO products, or a seasoned fan who just wants to try more of the range, The 16 sample kit is perfect for you.

With 16 different products covering the entire CARPRO maintenance range it's the perfect way to try out everything without a major outlay. The products in this kit are all 50ml(2oz). For some this is a perfect amount for testing, while others are capable of going through 3-4 cars.

This kit should be enough to produce a full CARPRO detail on your vehicle (you may only need more fallout remover for heavily contaminated cars) with products for cleaning and decontamination along with interior cleaning, as well as paintwork and wheel protection.

16 DIFFERENT CARPRO PRODUCTS INCLUDED

NOW WITH DESCALE, SPOTLESS 2.0, RETYRE AND INNERQD!



Available in:  
16 x 50mL





# Wash Box

The CARPRO Wash Box is the perfect starter kit for proper vehicle maintenance.

The Box contains all the necessary products: 500ml of Reset Intensive Car Shampoo, 500ml of EliXir High Gloss Quick Detailer, a Hand Wash microfiber mitt, a versatile 40x40 2-face MF towel and a DHydrate drying towel.

This is perfect for enthusiasts maintaining their CQUARTZ coated vehicles as well as those just beginning their adventure with automotive detailing wishing to start off with the best products on the market.

Kit contains:

- 500ml Reset: Intensive Car Shampoo
- 500ml EliXir: High Gloss Quick Detailer
- Hand Wash microfiber wash mitt
- 2-Face Microfiber Towel
- DHydrate twisted pile drying towel

**PERFECT SET FOR MAINTAINING CQUARTZ COATINGS**



Available in:  
2 x 500mL





04

CARPRO™

# Accessories

Mitts, microfibers & towels

Applicators

Polishing pads

Other



# FairyTail

## Premium Wash Mitt with a Handy Tail for Extended Reach

Meet the CARPRO FairyTail, a next-level wash mitt designed to bring comfort and performance washing routine. Crafted from the same ultra-soft, high-quality microfiber as our beloved DabDab wash pad, FairyTail delivers a gentle yet thorough touch to all exterior surfaces - safe for even the most delicate paint finishes.

What sets FairyTail apart? Its innovative plush microfiber tail. Seamlessly integrated into the mitt, the tail gives you the extended reach you need to clean hard-to-reach areas or tight gaps, grilles, mirror bases, wheel spokes, and other tricky areas where traditional mitts fall short.

Whether you're working on curves, contours, or crevices, FairyTail helps you clean with confidence and care without compromising efficiency or safety.

FairyTail isn't just a mitt – it's a smarter way to reach perfection.

**BUILT-IN MICROFIBER TAIL FOR EXTENDED REACH AND FLEXIBILITY**

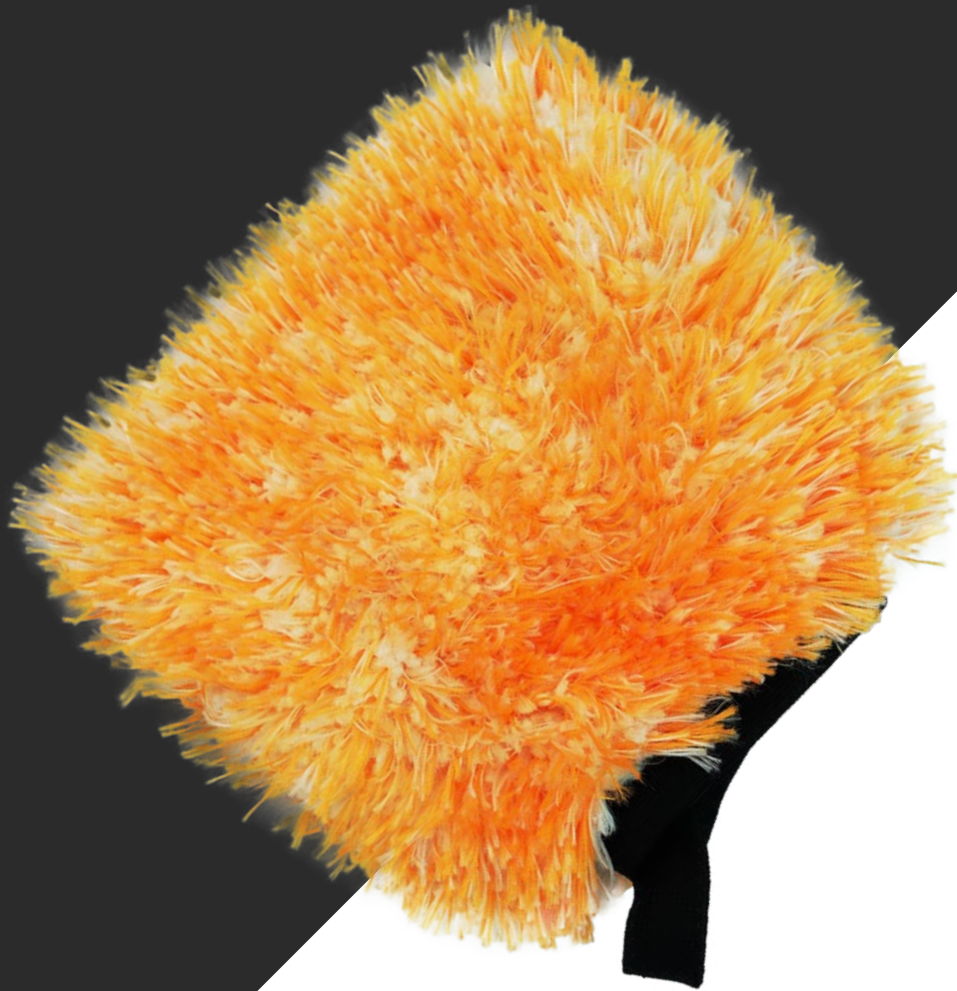
**MADE WITH PREMIUM, ULTRA-SOFT MICROFIBER**

**DUAL-SIDED DESIGN**

**COMFORTABLE, SNUG WRIST CUFF FOR SECURE HANDLING**

**IDEAL FOR HAND WASHING ALL EXTERIOR VEHICLE SURFACES**

**MACHINE WASHABLE AND DURABLE**



# FingerPrint

## Precision Microfiber Mini Wheel Mitt

Introducing the CARPRO FingerPrint, a compact, high-performance mini wash mitt built for precision cleaning. Designed to slip snugly over your fingers, FingerPrint gives you unmatched control when working on complex wheel designs, intricate grilles, tight trim, and other hard-to-reach areas.

Crafted from the same ultra-plush, paint-safe microfiber as our DabDab wash pad, FingerPrint offers exceptional softness and dirt-lifting power — perfect for even the most sensitive finishes. Whether you're detailing multi-spoke wheels, calipers, or delicate badges, this mitt makes fine work faster, safer, and more effective.

When the details matter, trust your FingerPrint.

**MINI WASH MITT THAT FITS OVER YOUR FINGERS**

**MADE WITH PREMIUM, ULTRA-SOFT MICROFIBER**

**IDEAL FOR INTRICATE WHEELS, TRIM, AND DETAILED EXTERIOR WORK**

**SECURE FIT FOR FULL TACTILE CONTROL AND REDUCED FATIGUE**

**MACHINE WASHABLE AND DURABLE**



# DarkSide **BRUSH**

The perfect tool for applying DarkSide and other tyre dressings.

Its extremely soft and dense nylon fibers allow to apply product thoroughly and effortlessly into any texture and detail of the tyre wall.

It's solvent-resistant and comes with a dedicated holder. It also works great on trim and interior surfaces!

SOLVENT-RESISTANT

DENSE AND SOFT NYLON FIBERS

FOR TYRE AND TRIM DRESSINGS



Available in:  
50mm / 70mm



# Sanding Discs

We understand that newer OEM paints and finishes are becoming increasingly finicky to work with. With our new SIC Sanding Discs we've successfully created a way to efficiently remove paint defects while keeping an OEM appearance.

Unlike traditional aluminium oxide sanding papers that remove more material and leave deeper sanding grooves, silicon carbide paper will efficiently correct the surface wet or dry while allowing you to refine the sanded area back to a flawless finish.

With our new anti-clogging technology, CARPRO Sanding Discs will last longer on your jobs, providing more value per pad. The attached interface padding will allow you to achieve consistent contact in the peaks and valleys of OEM texture without removing too much material.

Universally effective with D/A machine or manual sanding, no matter if you prefer sanding wet or dry, CARPRO Sanding Discs will get you consistent results on every finish.

ANTI-CLOG TECHNOLOGY

WET OR DRY SANDING

LONG LASTING

FOR D/A OR MANUAL USE

EASILY REMOVABLE

Available in:

P1500

P2000

P3000

Sizes:

3" / 5" / 6"

(76mm / 130mm / 160mm)



---

# DHydrate BOLD

High-absorption microfibre drying towel. Dry a whole SUV without wringing!

Keeping with the theme of never ending improvement we took our popular DHydrate drying towel and improved the overall performance to make DHydrate BOLD, a more absorbent and more efficient drying towel.

We lengthened the double twisted loops and nearly doubled the GSM to 1000 to allow more surface area contact resulting in quicker and more thorough water absorption to leave a streak free surface. The larger GSM stores more water eliminating the need for wringing out multiple towels to dry one vehicle.

**EXTREMELY ABSORBANT**

**DRY A WHOLE SUV WITHOUT WRINGING**

**1000 GSM**



Available in:  
**70 x 90 cm**



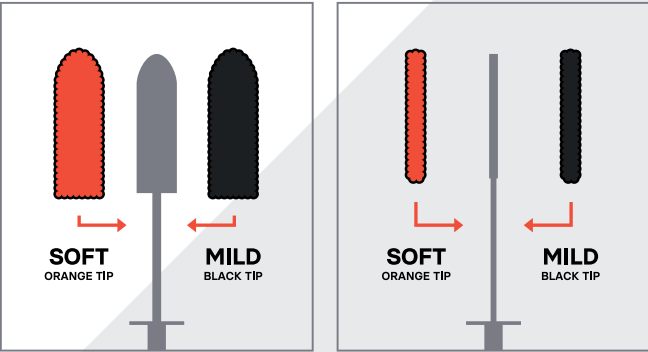


# Flat/Spot KIT

A set of two brushes designed to get into every corner of even the most complex wheel.

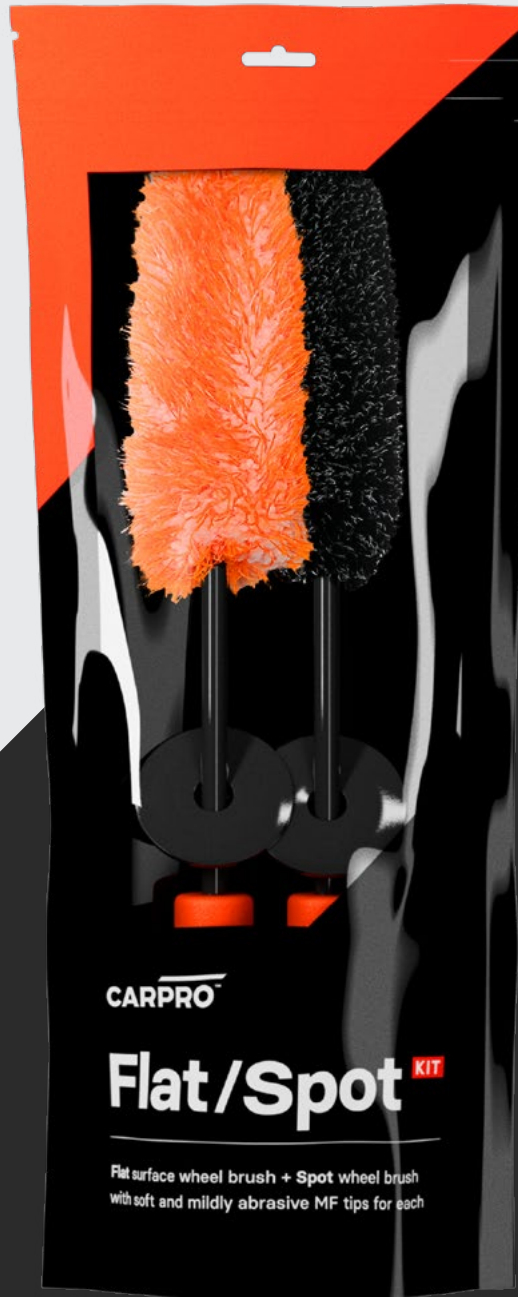
The 55mm Flat brush will get in tight spoke gaps without sacrificing surface area when cleaning the barrel, while the thin 12mm Spot brush will take care of the tiniest and most intricate details of your rim.

On top of that, each brush comes with 2 easily-replaceable premium microfibre tips with different abrasion levels (soft and mild) allowing full adjustability and easy cleaning!



DEDICATED WHEEL BRUSHES    DURABLE & EASY TO MAINTAIN

SET INCLUDES 2 BRUSH HANDLES AND 4 MF TIPS  
(1 SOFT AND 1 MILD PER EACH BRUSH)



# Clays X3

New mild and aggressive decon clay kits

A truly essential item in every detailer's arsenal. Our new clay bars are much harder to break down thanks to increased soap and high pH resistance.

Now available separately as a gentler mild grade or a more aggressive version. Each kit contains 3 x 100g bars individually packaged in separate cases allowing for easier and longer storage.



REMOVE BONDED CONTAMINANTS

CLEAN AND RESTORE SMOOTHNESS

RESISTANT TO SOAPS AND HIGH PH

DO NOT BREAK DOWN





CARP



# DabDab

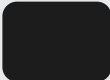
DabDab is a new super-soft wash mitt made with a special blend of long and short fibres to safely remove dirt during washes on coated and non-coated vehicles.

We designed it with a stiffer core that follows the contours of the bodywork to maximise the contact area and improve dirt-lifting properties. The double-sided design allows you to carry more water and shampoo from the bucket to the vehicle for more cleaning power and a safer overall wash. Wash part of a panel and then flip DabDab over and move on or keep working on the same section for more cleaning action. DabDab will surely increase your wash efficiency.

DOUBLE-SIDED

SUPER SOFT FIBERS

STIFFER CORE FOR A BETTER CONTACT AREA



Available in:  
21 x 18 cm



# GlassMitt

GlassMitt is specifically designed for more thorough, edge-to-edge interior glass cleaning. The special MF blend allows for a gentle and streak-free removal of all contaminants, which normally create an unclear film on interior glass, limiting visibility and intensifying fogging.

GlassMitt allows to easily remove all residues from human breath, AC vapours and fogging, leaving a perfectly clear, streak free glass surface, especially in those hard to reach areas on front and rear windows.

Use the waffle side in combination with Clarify or Eraser to remove the majority of contamination then use the glass fiber side for a final wipe and a streak-free view.

2-SIDED DESIGN

WAFFLE SIDE FOR EFFECTIVE CLEANING

GLASS FIBER SIDE FOR A STREAK-FREE FINISH



Available in:  
21 x 17 cm



# WheelsMitt

The WheelsMitt is a dedicated wheel, tyre and plastics cleaning tool packing extra versatility thanks to the 2-sided design.

On one side it has a coarser fabric for stronger agitation and dirt removal, while the other is made with a soft MF for more delicate cleaning and lifting dirt. It is a truly versatile cleaning tool, especially for cleaning tasks south of the paintwork.

2-SIDED DESIGN

COARSER FABRIC ON ONE SIDE FOR BETTER AGITATION

SOFT MF SIDE FOR MORE DELICATE AND THOROUGH CLEANING



Available in:  
21 x 18 cm







C.QUARTZ

# Maintenance Bag

The new CQUARTZ Maintenance Bag is designed to perfectly fit 8 CARPRO cleaning & maintenance products as well as a range of accessories or coats in convenient adjustable pockets.

Equipped with a set of CARPRO product samples, it is the ideal starter kit to offer your clients when you release their freshly coated vehicle, as well as a future-proof accessory for when they become true detailing enthusiasts. It contains our critically acclaimed Reset shampoo; BugOut intensive insect remover; CARPRO EcH2O quick detailer concentrate for light cleaning; the incredible CARPRO Reload sealant which amplifies gloss, adds slickness and protection; and the extremely versatile CARPRO Perl for use on plastic, engines, rubber, and leather. It also includes a CARPRO BOA towel, a Dilute dilution ratio bottle and an instructional booklet on how to properly maintain a coated vehicle.

The bag pockets are fully adjustable, it's covered in a rubberized splash-proof material and lined with an insulation layer to protect the products in high temperatures.

**MULTIPLE ADJUSTABLE POCKETS**

**DURABLE, WATERPROOF DESIGN**

**INSULATING LAYER**



Available in:  
CQUARTZ (ORANGE) / CQPRO (Silver) / CQFR (Gold)







# Measure

Measure is our new and easy way of precisely measuring concentrated liquids for dilution.

Simply screw on any bottle with a 28mm thread and squeeze until the liquid reaches the desired level. Then pour into your dilution container directly – Measure will not allow any more liquid to flow from the bottle.

SCREW-ON / SQUEEZE-OUT MEASURING CUP

SUPER EASY TO USE

ALLOWS FOR QUICK AND PRECISE DILUTIONS

 Kit contains:  
1 cup + 2 tubes



# Dilute

CARPRO’s multi-ratio dilution bottles designed by detailers for detailers.

The Dilute bottle has pre-printed dilution ratio measurements suitable for all your CARPRO products. Simply fill with water to the desired dilution ratio marker, then top up to the fill line with the chosen product and give it a good shake to mix.

Ratios range from 1:1 to 1:30 and there is a dedicated space on the label to note the product name and dilution ratio. Every Dilute comes with a CARPRO chemical resistant spray head.

RATIOS BETWEEN 1:1 AND 1:30

INCLUDES BLANKS FOR EASY PRODUCT AND RATIO MARKING

 Available in:  
500mL / 1L



# MFX

Struggle no more with dirty microfiber towels and clogged drying towels. CARPRO MFX is designed to remove oils, waxes and dirt from your microfiber cloths to restore the performance of drying towels and buffing cloths.


Over time drying towels will become less absorbent due to a build-up of oils, surfactants and rinse aid products, MFX will remove this build up and restore your drying towel to maximum performance.

Your microfiber is made up of polyester and polyamides, while polyester is the larger percentage and designed to absorb oils, with polyamides (both natural such as silk and artificial fibers) are designed to absorb water. When you use a microfiber to remove wax residue, or sealants the fibers become coated in the oils from the products and this inhibits the microfiber from absorbing water, simply pushing it around the surface. MFX is designed to tackle this problem.

DESIGNED TO RESTORE MICROFIBER TOWELS AND POLISHING PADS

REMOVES OIL, DIRT, WAX AND LIGHT STAINS

SUITABLE FOR MACHINE WASHING

 Available in:  
50mL / 500mL / 1L / 4L



# Air Freshener

With the goal of creating the best, long lasting fragrance experience, we've developed a proprietary scent releasing technology for our new Air Fresheners.

Coupled with 4 options of exceptional fragrances (patchouli, almond, lime mint and squash), they bring unprecedented freshness to the interior of your car. Developing this seemingly simple product, we've surpassed not only our expectations, but the International Fragrance Association's standards as well.

Pick your favorite and enjoy!

LONG-LASTING, FRESH SCENT

4 SCENT OPTIONS



Available in:  
Patchouli / Almond / Lime Mint / Squash











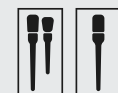
# Detailing Brushes

The CARPRO Detailing Brushes are the perfect tool set for all exterior and interior cleaning tasks. Available are: 2-piece set containing one natural hog hair brush and one synthetic soft touch brush for delicate surfaces; as well as the new XL Brush for all tougher tasks.

The natural hog hairbrush is the quintessential perfectionist detailing brush for all cleaning tasks on exterior trim, badges and with heavy soiling, while the synthetic soft touch brush has a specially designed split fiber finish to ensure scratch-free cleaning on even the most delicate surfaces. The CARPRO XL Detailing Brush is perfect for all the precise cleaning tasks on larger surfaces. The longer, stiffer nylon fibers are more durable and will easily withstand tough jobs in the engine bay, on wheels, etc.

CHEMICAL/ALCOHOL/SOLVENT RESISTANT

ERGONOMIC TEXTURED GRIP



Available in:  
2-Brush Set (hog hair + synthetic soft touch) / XL Brush





# Bucket Stickers

Designate and adorn your favourite Wash, Rinse, and Wheels buckets with this set of CARPRO stickers.

Separating your buckets based on purpose couldn't be any more obvious to us detailers. With our simple sticker set, you can quickly distinguish them, while showing they contain the right stuff, from your favourite brand.

SET OF 3 STICKERS FOR WASH, RINSE, AND WHEELS BUCKETS

25X12CM

Available in:  
WASH / RINSE / WHEELS







## Merino Wool Mitt

**100% NATURAL MERINO SHEEP SKIN**

The CARPRO Merino Wool Wash Mitt is the ultimate in luxurious gentle auto wash tools and is a must-have for anyone who loves their vehicle or cares for the quality of work they provide to others.

## Innerscrub

**VERSATILE INTERIOR MITT**

The InnerScrub mitt is an extremely effective interior tool designed to clean nearly all interior surfaces with ease. InnerScrub is fabricated from a special blend of polyester and microfiber for removing difficult stains from all manner of surfaces.



## MF Towels

**A WIDE SELECTION OF EXCEPTIONAL MFs**

The famous BOA, Terry Weave and 2Face towels are only some examples of the high-quality CARPRO microfiber towels for all purposes

## 2Face Lite

**40PCS/PACKAGE**

Our new 2Face Lite towels are the perfect tool for a huge variety of tasks where you need to save a little money on your towels but still utilize a quality tool.



## Hand Wash Mitt

**MULTI-PURPOSE MF WASH MITT**

The CARPRO Hand Wash was designed with a dense, plush twin microfibre blend to ensure safe cleaning with low maintenance. Our synthetic microfibre blend is designed to trap dirt and debris by gently lifting them away from the surface, ensuring a safe cleaning action on even the most delicate surfaces.

## MF Gloves

**VERSATILE MICROFIBER GLOVES**

Our versatile microfiber gloves feature a soft plush microfiber weave, can be used for a variety of purposes and are fully washable and reusable.



## DHydrate

**DEDICATED DRYING TOWELS**

The CARPRO DHydrate Drying Towels are designed to easily slide across vehicle surfaces and pull every drop of water off the surface leaving it spotless, shiny and ready to admire.

## GlassFiber

**DEDICATED GLASS MF TOWEL**

The high-density microfiber weave provides effortless and streak-free glass cleaning with minimum residue and streaking. GlassFiber is comprised of a specially designed exposed microfiber structure, wrapped over a thin sponge core to absorb liquids and improve its cleaning abilities.



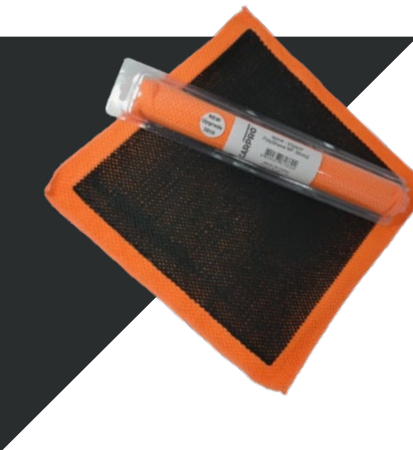




## MF Applicator

### MOST CONVENIENT APPLICATOR

Utilising a non-lint, streak-free microfibre with a unique inner core that doesn't absorb and waste your coating, this applicator is designed to transfer the maximum amount of coating to the surface, ensuring a streak-free and precise application for easy excess removal.



## Polyshave

### SUPER EASY DECON TOWEL

For professionals and enthusiasts alike the Polyshave Decontamination Towel is a simple and fast method to remove contaminants from the surface of exterior automotive finishes and glass.

## Applicators

### A VARIETY OF APPLICATORS FOR ALL PURPOSES

Available are: CQUARTZ foam block applicator, Dedicated tyre applicator, Finger foam blocks, and Ceriglass hand polishing pad.



## Team Polos

### T-SHIRTS FOR THE CARPRO FANATIC IN YOU

We've designed the new CARPRO Detailer T-shirts and long sleeves to fuel the CARPRO fanatic in you. Wear them at your workshop and make your customers aware of all the necessary precautions and directions for dealing with a true detailer.

## Product Display

### SHOWCASE CARPRO AT YOUR STORE/WORKSHOP

Our branded product display stand is an eye-catching point-of-sale item perfect for distributors and detailers alike. It is super easy to assemble - it only takes a few minutes and allows you to rearrange shelves as you see fit.



## XL Bag

### PROPER STORAGE SPACE FOR YOUR COLLECTION

Designed to store and transport your CARPRO product arsenal. The XL detailing bag has been specifically designed to store and compartmentalise all your essential kit.



## Wheel Covers

### EXTREMELY DURABLE AND STYLISH

With the CARPRO waterproof wheel covers you can protect your precious wheels from weather damage and dirt while in storage.

## KneePad

### SAVE YOUR KNEES!

Kneeling on hard floors will cause strain on your knees. Combat this with CARPRO's kneeling mat made with durable and comfortable memory foam. CARPRO KneePad is perfect for working on lower sections of your car. It is fully waterproof and all it takes to clean it is a quick wipe.







RUPES

M  
RTZ





## Ultra Pad

HEAVY POLISHING PAD

AVAILABLE IN: 3" / 5" / 6"

## Cool Wool Pad

CUTTING PAD

AVAILABLE IN: 3" / 5" / 6"



## Flash Pad

CUTTING/POLISHING PAD

AVAILABLE IN: 3" / 5" / 6"



## Denim Pad

ORANGE PEEL REMOVAL PAD

AVAILABLE IN: 3" / 5"



## Orange Pad

POLISHING/FINISHING PAD

AVAILABLE IN: 3" / 5" / 6"

## Gloss Pad

FINISHING/JEWELING PAD

AVAILABLE IN: 3" / 5" / 6"



## GlassCUT Pad

MORE AGGRESSIVE GLASS PAD

AVAILABLE IN: 3" / 5"

## Velvet Pad

ORANGE PEEL REMOVAL PAD

AVAILABLE IN: 5"



## MF Pad

CUTTING/POLISHING PAD

AVAILABLE IN: 3" / 5" / 6"

## Glass Pad

GLASS CUTTING/POLISHING PAD

AVAILABLE IN: 3" / 5"



## Wool Pad

CUTTING PAD

AVAILABLE IN: 3" / 5" / 6"

## Nano Pads KIT

A VERSATILE SET OF MINI-PADS

AVAILABLE IN: 1" + 2" KIT







## Find My Dilute

### STICKER SET FOR DILUTE BOTTLES

Improve your workflow and never struggle to identify your diluted CARPRO products with these convenient stickers.



## Banners

### PROMO BANNERS

AVAILABLE IN VARIOUS SIZES AND FORMATS

## Keychains

### PROMO KEYCHAINS

AVAILABLE IN: Immortal, CQUARTZ Pro, CQ FR



## Dispenser

### EASILY FILL BOTTLES FROM JUGS

The CARPRO dispenser nozzle provides an airtight seal and a simple filling process for your CARPRO Spray bottles.



## Masking Tape

### AVAILABLE IN: 3/16" / 1/2" / 1" / 2"

The CARPRO automotive masking tape is the perfect tool to protect your trim or sensitive areas while polishing and are perfect for automotive paint masking as well.





C.QUARTZ

D.QUARTZ

immortal Instant Self-Healing  
ppf



Since day one the goal of CQUARTZ Finest, has been to approve only the most talented, caring, and character driven professionals across the world.

Use the code to locate the nearest CQ, DQ, or Immortal installer in the certified CARPRO network.



[carpro.global/find-your-finest/](https://carpro.global/find-your-finest/)





**C.QUARTZ**

**D.QUARTZ**

**Immortal** Instant Self-Healing  
PPF

[www.carpro.global](http://www.carpro.global)

All rights reserved, CARPRO Global Ltd. 2026

Select photos courtesy of  
Centre de l'auto Éléance [www.centreautoelegance.ca](http://www.centreautoelegance.ca)