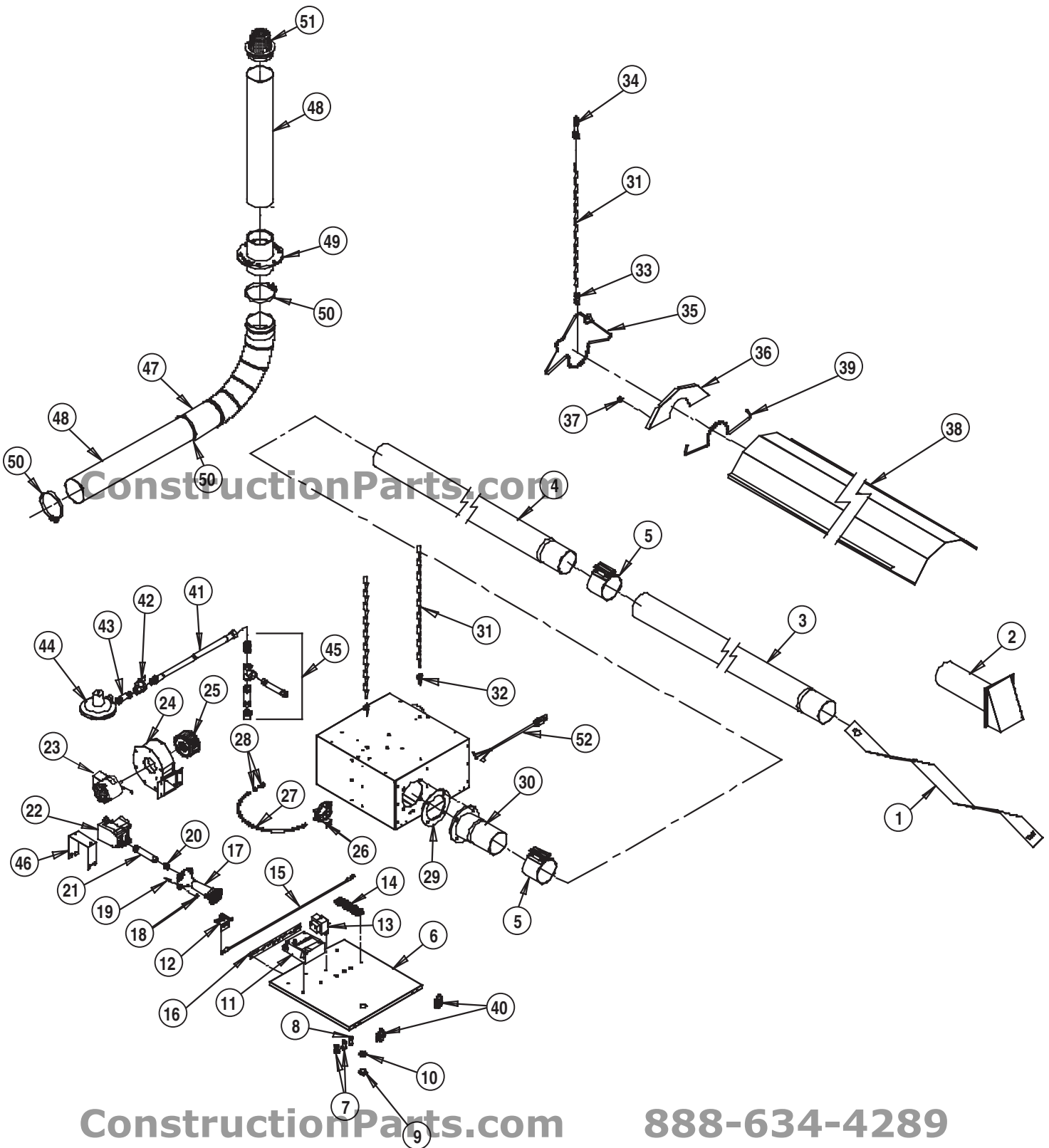


Parts Identification

ConstructionParts.com
Models AT080B/AT100B/AT125B/AT150B

888-634-4289

PARTS SCHEMATIC



ConstructionParts.com

888-634-4289

PARTS LIST

Item	Description	AT080	AT100	AT125	AT150
1	Air Turbulation Strip			24737	
2	Vent Hood			24859	
3	Tube, Uncoated, 4 in. x 10 ft.			24587	
4	Tube, Aluminized, 4 in. x 10 ft.			24586	
5	Clamp			24589	
6	Cover, Burner Box, w/Hinges & LEDs			24966	
	Single Stage Heater				
	Two Stage Heater			24965	
7	Amber LED			24592	
8	Red LED			22299	
9	Lens			08255	
10	O-Ring			08347	
11	Ignition Control			22301	
12	Igniter w / Bracket			24972	
13	Transformer			09615	
14	Terminal Strip			22905	
15	Ignition Cable			24810	
16	Hinge			08257	
17	Burner Assmby			24967	
	Propane Gas				
	Natural Gas			25496	
18	Nut			09242	
19	Spacer			24924	
20	Burner Orifice				
	Propane Gas	25228	25056	24869	24968
	Natural Gas	20605	25230	23471	25086
21	Manifold			24898	
22	Gas Control Valve			22076	
	LP Single Stage				
	LP Two Stage			25278	
	Natural Gas Single Stage			22078	
	Natural Gas Two Stage			25284	
23	Motor			24963	
24	Fan Housing			24964	
25	Fan Wheel			24598	
26	Switch, Differential Air Pressure w/ Orifice			25605	
27	Tube, Pressure Switch			24947	
28	Orifice, Differential Air Pressure w/ Nut			24973	
29	Ceramic Gasket			24590	
30	Tube, Swaged, 8 in. w/ Flange			24962	
31	Chain			24848	
32	Open Eye Bolt			07715	
33	S-Hook			24849	
34	Open Eye Lag Screw			09104	
35	Hanger			24588	
36	End Cap, Reflector			24867	
37	U-Clip			24868	
38	Reflector			24591	
39	Support, Reflector			24870	
40	Latch			09199	
41	Hose, w / Adapter, Rigid x Swivel			20713	
42	Shut off Valve			05548	
43	Nipple 1/2 x 3 in.			07148	
44	Regulator, Second Stage, LP Gas			06553	
45	Sediment Trap			00815	
46	Bracket, Gas Control Valve			24864	
47	Flex Tube, 4 in. Dia. x 8 ft.			24858	
48	Tube, Air Inlet			24856	
49	Coupling / Flange Assembly			24975	
50	Clamp, Flex Tube			24857	
51	Air Inlet End Cap			24861	
52	Power Cord			01220	

NOTE: Gasket for fan housing discharge is Part # 24850
 Complete gasket kit for burner box is Part # 24851.
 Complete motor and fan assembly is Part # 24961.