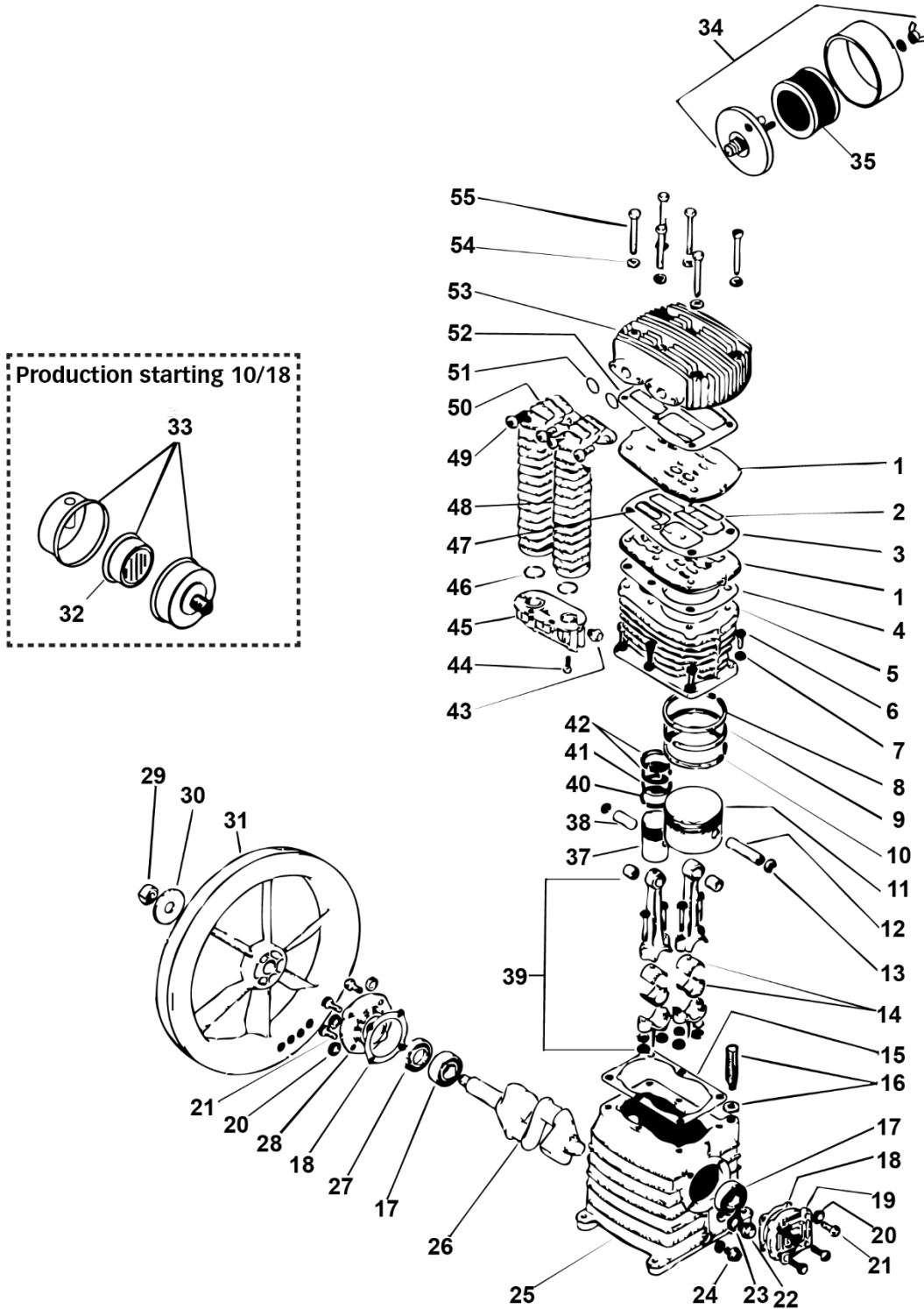
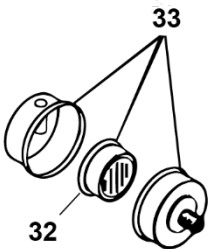


**SCHEMATIC FOR
PMP22K30**



Production starting 10/18





PARTS LIST FOR PMP22K30

Sch.#	Description	Part#	Qty
1	Valve Plate	32702750CH	2
2	Valve - LP	32702400CH	4
3	Gasket	30502280CH	1
4	Gasket	30502290CH	1
5	Cylinder	31602020CH	1
6	Bolt	37302420CH	6
7	Washer	37504220CH	6
8	Ring - LP	31202160CH	1
9	Ring - LP	31202170CH	1
10	Ring - LP	31202180CH	1
11	Piston - LP	31202190CH	1
12	Piston Pin - LP	31202230CH	1
13	Snap Ring	37602260CH	4
14	Con Rod Inserts **	3119013017CH	2
15	Gasket	30502300CH	1
16	Breather w/O Ring	36507050CH	1
17	Bearing	30302140CH	2
18	Gasket	30502310CH	2
19	Bearing Carrier	30402740CH	1
20	Washer	37508130CH	8
21	Bolt	37300070CH	8
22	Sight Glass w/gasket	36500140CH	1
23	Gasket	30500130CH	1
24	Oil Drain Plug	BLSQPL0250	1
25	Crankcase	33102030CH	1
26	Crankshaft	30202000CH	1
27	Oil Seal	30302150CH	1
28	Bearing Carrier	30402800CH	1
29	Nut	37403780CH	1
30	Washer	37502450CH	1
31	Flywheel	31003040CH	1
32	Element (current)	433	1
33	Intake Assy (current)	FS10072	1
34	Intake Assy (old style)	FS14075	1
35	Element (old style)	431	1
37	Piston - HP	31203050CH	1
38	Piston Pin	31202240CH	1
39	Con Rod Assy **	311SL11005CH1	2
40	Ring - HP	31202210CH	1
41	Ring - HP	31202200CH	1
42	Ring - HP	31203390CH	2
43	Plug	36506800CH	1
44	Bolt	37302480CH	6
45	Connector	3690211ACH	1
46	O Ring	30502400CH	2
47	Valve - HP	32702390CH	2
48	Right Cooler	32902720CH	1
49	Bolt	37302530CH	4
50	Left Cooler	32902710CH	1
51	O Ring	30502500CH	2
52	Gasket	30502270CH	1
53	Head	31302700CH	1
54	Washer	37502320CH	6
55	Bolt	37302530CH	6
	Gasket Set (3,4,15,16,18,22,46,51,52)	K30GASKETS	1
	Ring Set (8,9,10,40,41,42)	K30RINGS	1
	Valve Plate Assembly (1,2,3,4,47,52)	3000VK30	1
	Valve Repair Kit (2,3, 4,47,52)	VKK30	1
	Piston Assembly - LP (8,9,10,11,12,13)	3000PLPK30	1
	Piston Assembly - HP (13,37,38,40,41,42)	3000PHPK30	1