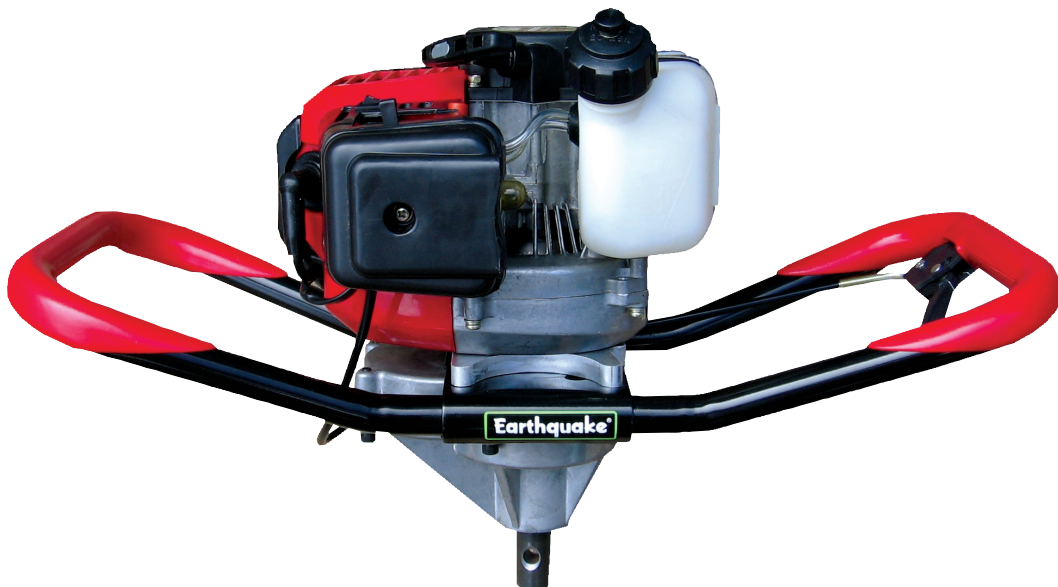


Earthquake®

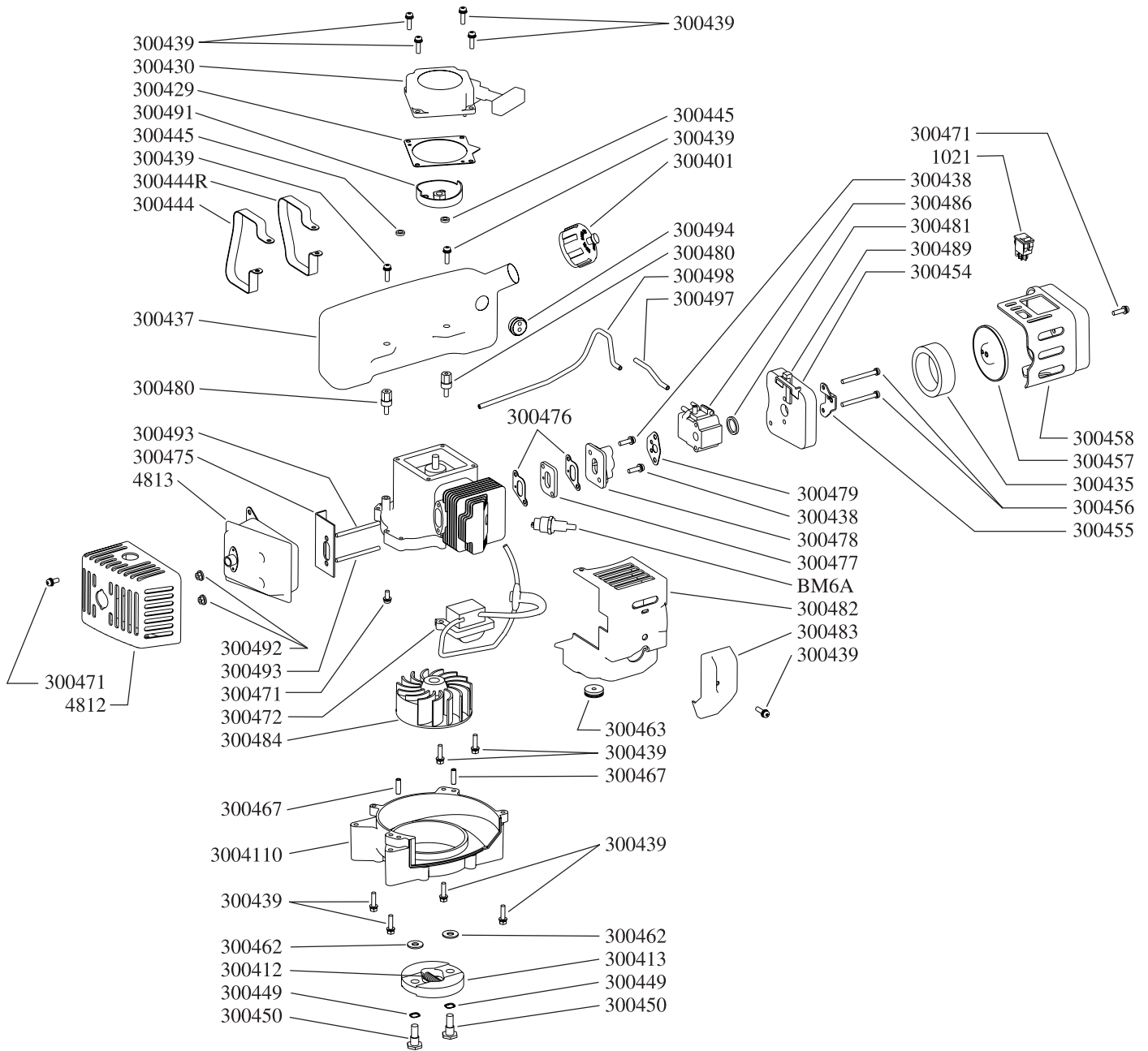
OPERATING & PARTS MANUAL

E43

Earth Auger Powerhead



OME43
Rev. 4/13/06
© 2006 Ardisam, Inc.
All Rights Reserved. Printed in USA.

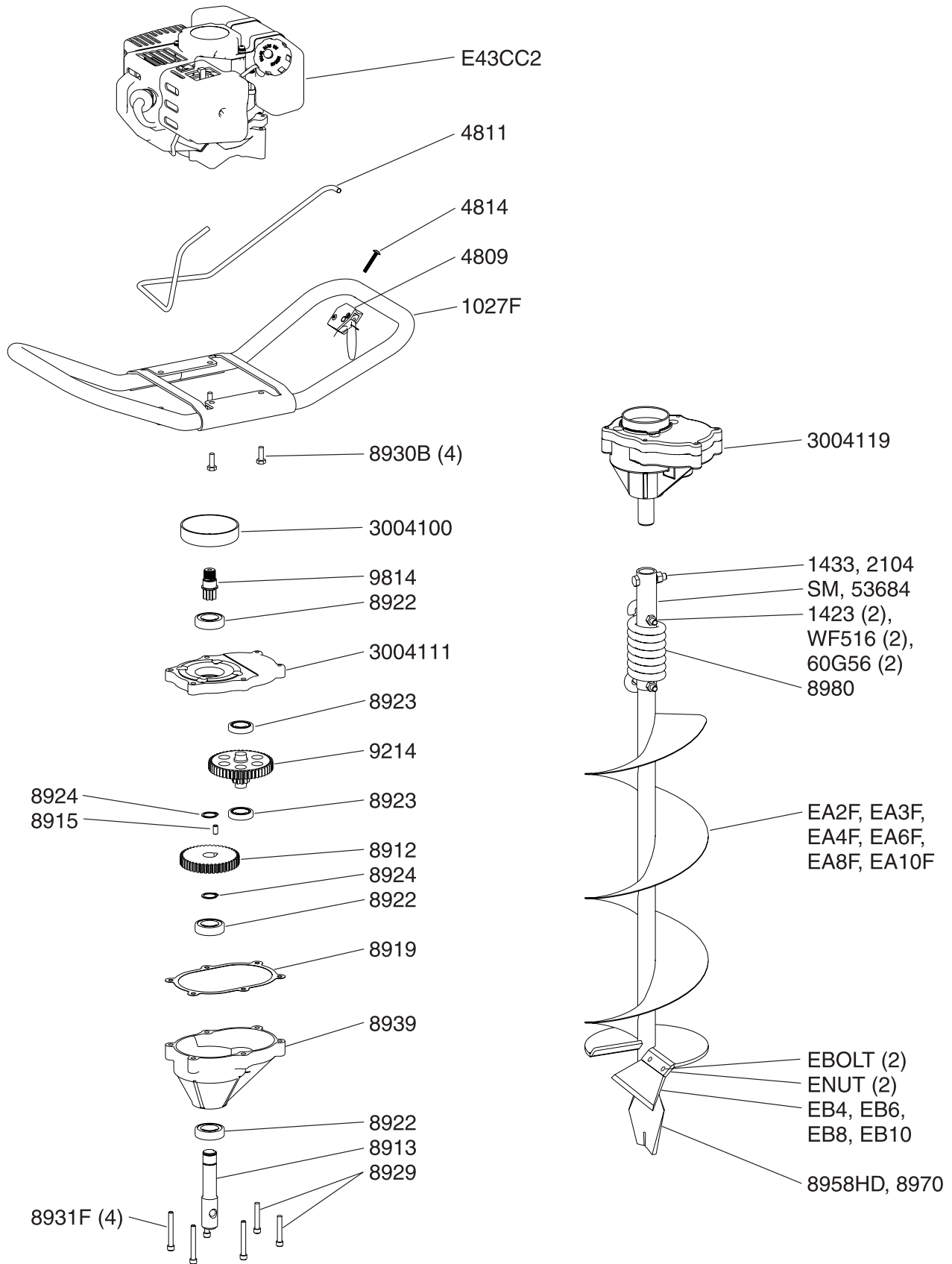


E43 ENGINE PARTS LIST



MINIMUM ORDER \$10.00

<u>Part #</u>	<u>Description</u>	<u>Qty.</u>	<u>Part #</u>	<u>Description</u>	<u>Qty.</u>
1021	SWITCH, ROCKER	1	300477	HEAT DISK	
300401	CAP, FUEL, MANUAL VENTING	1	1300478	WINDPIPE, INTAKE	1
300412	SPRING, CLUTCH	1	300479	GASKET, CARBURETOR	1
300413	CLUTCH ROTOR ASSEMBLY	1	300480	SPACER, FUEL TANK THREADED	2
300429	PLATE, RECOIL	1	300481	O-RING	1
300430	RECOIL ASSEMBLY	1	300482	SHROUD, ENGINE	1
300435	FILTER, AIR	1	300483	COVER, ENGINE SHROUD	1
300437	FUEL TANK	1	300484	FLYWHEEL, MAGNETO	1
300438	BOLT W/WASHER, M5 X 25MM	2	300486	CARBURETOR	1
300439	BOLT W/WASHER, M5 X 18MM	13	300488	CHOKE	1
300444	SUPPORT, FUEL TANK, LEFT	1	300489	LEVER, CHOKE	1
300444R	SUPPORT, FUEL TANK, RIGHT	1	300491	RECOIL CLUTCH	1
300445	WASHER, M5	2	300492	NUT, M6	2
300449	WASHER, SPRING	2	300493	BOLT, STUD M6 X 62MM	2
300450	BOLT, SHOULDER	2	300494	GROMMET, FUEL TANK, 2-HOLE	1
300454	BASE, INTAKE	1	300497	HOSE, PRIMER LINE 4"	1
300455	PLATE, INTAKE COVER ADAPTER	1	300498	HOSE, PRIMER LINE 9"	1
300456	BOLT, M5 X 50MM	2	3004103	FILTER, FUEL (NOT SHOWN)	1
300457	COVER, AIR FILTER	1	3004105	KIT, GROMMET & FUEL LINES	1
300458	COVER, INTAKE	1	3004106	GUARD, FLYWHEEL (NOT SHOWN)	1
300462	WASHER, ROTOR	2	3004109	PRIMER BULB (NOT SHOWN)	1
300463	GROMMET, ENGINE SHROUD	1	3004110	MOUNT RING AND SHROUD	1
300467	PIN, LOCATING	2	3004113	CARBURETOR KIT (NOT SHOWN)	1
300470	KIT, FUEL LINE HOSE & FILTER	1	3004115	KIT, GAS TANK/LINES/FILTER/GROMMET	1
300471	BOLT, M5 X 12MM	3	3004120	SCREW, CHOKE LEVER (NOT SHOWN)	1
300472	COIL, IGNITION	1	4812	COVER, MUFFLER, METAL	1
300475	GASKET, MUFFLER	1	4813	MUFFLER, CATALYTIC CONVERTER	1
300476	GASKET, INTAKE	2	BM6A	SPARK PLUG (CHAMPION CJ8)	1



MINIMUM ORDER \$10.00

POWERHEAD PARTS

Part #	Description	Qty.
1027F	HANDLEBAR, FOAMED	1
3004100	CLUTCH DRUM	1
3004111	GEAR CASE TOP	1
3004119	TRANSMISSION COMPLETE	1
4808	BARREL, THROTTLE CABLE (NOT SHOWN)	1
4809	THROTTLE TRIGGER ASSEMBLY	1
4811	CABLE, THROTTLE	1
4814	BOLT-PHILLIPS TRUSS HD, 10-24 X 1-1/4"	1
8912	GEAR 44T	1
8913	OUTPUT SHAFT 7/8"	1
8915	PIN, DOWEL 1/4" X 1/2", HARDENED STEEL	1
8919	GASKET	1
8922	BALL BEARING	3
8923	BALL BEARING	2
8924	SNAP RING	2
8929	BOLT-SHCS, 1/4-20 X 1-1/2"	2
	(gear case bottom to gear case top)	
8930B	BOLT-HH GR5 BLACK, 1/4-20 X 3/4"	4
8931F	BOLT-SHCS, 1/4-20 X 2"	4
	(gear case to ring)	
8939	GEAR CASE BOTTOM	1
9214	48T & 10T PINION GEAR CLUSTER, LEFT THRD .	1
9814	PINION GEAR, 7 TOOTH THREADED	1
E43CC2	GAS ENGINE, 43CC	1
OME43	OPERATOR'S MANUAL	1

EARTH AUGER PARTS

Part #	Description	Qty.
1423	BOLT-HHCS, 5/16-18 X 2", GRADE 5	2
	(auger shock spring)	
1433	BOLT-HHCS, 3/8-16 X 1-1/2"	2
	(auger to powerhead)	
2104	NUT-HEX LOCKING, 3/8-16	2
53684	SHOCK TOP 1-PC (used after 11/05)	1
	(used on 6" or larger earth auger)	
60G56	NUT-HEX 2-WAY REVERSIBLE LOCKNUT, 5/16-18	2
8958HD	FISHTAIL POINT	1
	(used on 4" or larger earth auger)	
8970	FISHTAIL POINT	1
	(used on 2" & 3" earth auger)	
8980	SHOCK SPRING	1
EA2F	EARTH AUGER, 2" W/FISHTAIL POINT	1
EA3F	EARTH AUGER, 3" W/FISHTAIL POINT	1
EA4F	EARTH AUGER, 4" W/FISHTAIL POINT	1
EA6F	EARTH AUGER, 6" W/FISHTAIL POINT	1
EA8F	EARTH AUGER, 8" W/FISHTAIL POINT	1
EA10F	EARTH AUGER, 10" W/FISHTAIL POINT	1
EB4	EARTH BLADE, 4"	1
	(includes EBOLT & ENUT)	
EB6	EARTH BLADE, 6"	1
	(includes EBOLT & ENUT)	
EB6HD	HEAVY DUTY EARTH BLADE, 6"	1
	(includes EBOLT & ENUT)	
EB8	EARTH BLADE, 8"	1
	(includes EBOLT & ENUT)	
EB8HD	HEAVY DUTY EARTH BLADE, 8"	1
	(includes EBOLT & ENUT)	
EB10	EARTH BLADE, 10"	1
	(includes EBOLT & ENUT)	
EB10HD	HEAVY DUTY EARTH BLADE, 10"	1
	(includes EBOLT & ENUT)	
EBOLT	BOLT-HEX, 1/4-28 X 5/8", GRADE 5	2
	(earth blade to auger)	
ENUT	NUT-NYLOC, 1/4-28	2
SM	SHOCK MECHANISM (used before 11/05)	1
	(used on 6" or larger earth auger)	
WF516	WASHER-FLAT, 5/16"	2

ACCESSORIES

EXT6	DEPTH EXTENSION, 6"
EXT12	DEPTH EXTENSION, 12"
EXT18	DEPTH EXTENSION, 18"