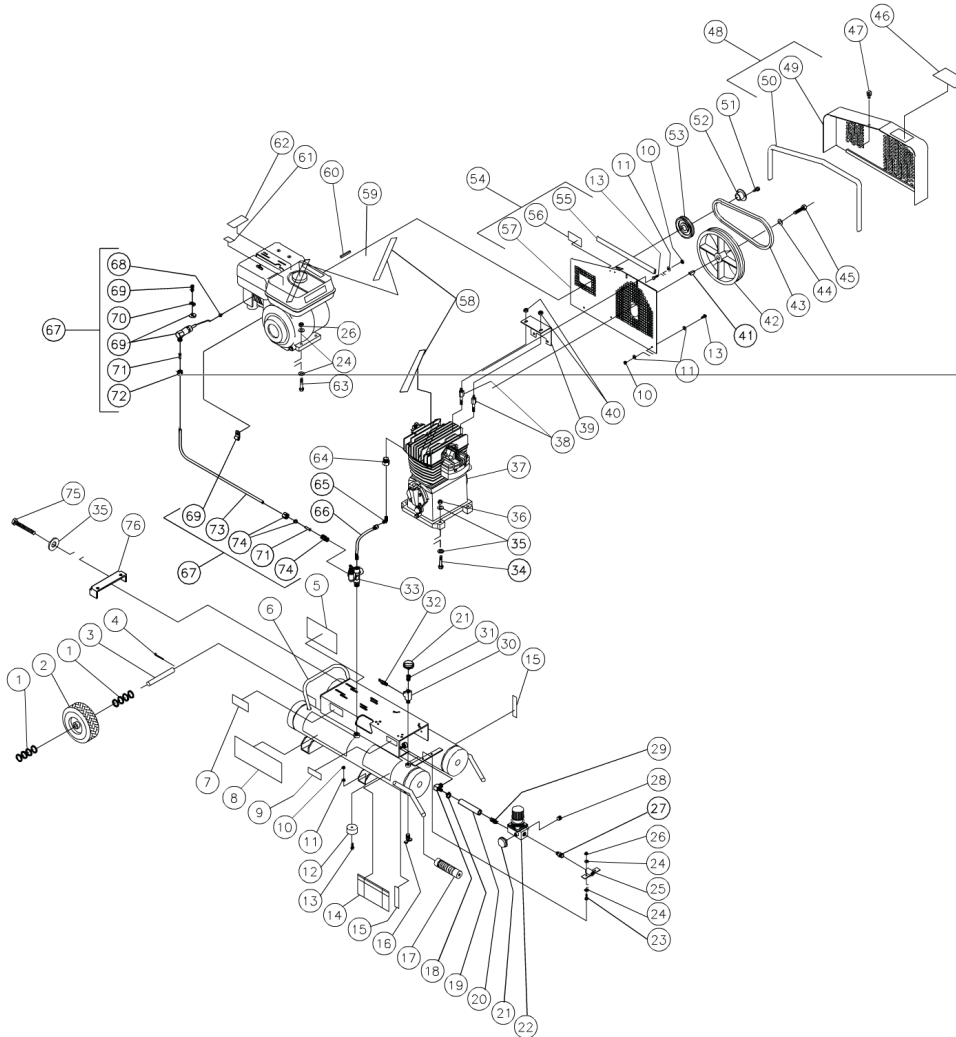




AD1-PH55-08M / AD1-PH55-08M (sn:20013434-99999999)

## TANK ASSEMBLY



Id	Item #	Description	Quantity	Rev	Comments
1	28-0008	WASHER	8		
2	14-0017	WHEEL	1		
3	20-0420	AXLE	1		
4	43-0092	COTTER PIN	2		
5	N/A Sep.	DECAL- MAINTENANCE INSTRUCTIONS (SEE 34-9016)	1		
6	854-0027	AIR TANK ASSEMBLY (INC. 9, 14, 15)	1		
7	N/A	DECAL-DATA PLATE	1		
8	34-0814	DECAL- MI-T-M	1		

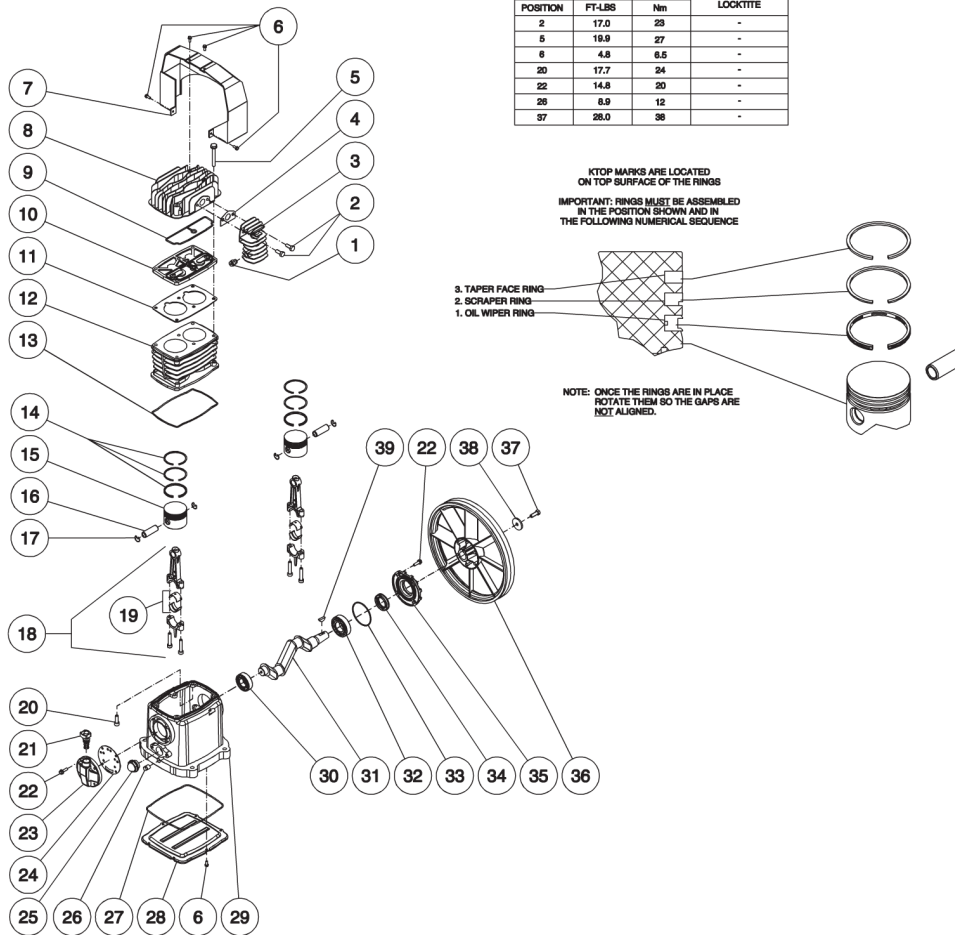
<b>Id</b>	<b>Item #</b>	<b>Description</b>	<b>Quantity</b>	<b>Rev</b>	<b>Comments</b>
9	N/A Sep.	DECAL- WARNING: HOT SURFACE (SEE 34-9016)	1		
10	30-0155	LOCKNUT	9		
11	28-0002	WASHER	12		
12	14-0069	ISOLATOR	4		
13	27-0015	BOLT	9		
14	N/A Sep.	DECAL- DANGER/WARNING/CAUTION (SEE 34-9016)	1		
15	N/A Sep.	DECAL- DRAIN TANK (SEE 34-9016)	2		
16	23-0312	DRAIN VALVE	2		
17	7-0143	HANDLE GRIPS	2		
18	23-0418	ELBOW	1		
19	42-0011	HOSE CLAMP	2		
20	15-0007	HOSE *(ONE FOOT REQUIRED)	1		
21	22-0257	PRESSURE GAUGE	2		
22	22-0231	ADJUSTABLE REGULATOR	1		
23	27-0067	BOLT	2		
24	28-0003	WASHER	12		
25	20-0421A01	REGULATOR MOUNTING BRACKET	1		
26	30-0157	LOCKNUT	6		
27	24-0010	NIPPLE	1		
28	N/A	REGULATOR PLUG	1		
29	23-0105	HOSE BARB	1		
30	23-0127	TEE	1		
31	23-0111	ADAPTER	1		
32	22-0228	SAFETY RELIEF VALVE	1		
33	22-0346	PILOT VALVE	1		
34	27-0121	BOLT	4		
35	28-0023	WASHER	9		
36	30-0159	LOCKNUT	4		
37	3-0175	COMPRESSOR W/FLYWHEEL	1		
38	27-8920	STUD BOLT	2		
39	20-0475A01	BELTGUARD BRACKET	1		
40	30-3023	NUT	2		
41	43-0102	WOODRUFF KEY W/COMPRESSOR	1		
42	10-0100	FLYWHEEL W/COMPRESSOR	1		
43	11-0040	DRIVE BELT	1		
44	28-1032	FLATWASHER W/COMPRESSOR	1		
45	27-8032	BOLT W/COMPRESSOR	1		
46	N/A Sep.	DECAL-OPERATING INSTRUCTIONS/GAS (SEE 34-9016)	1		
47	33-0197	FASTENER	1		

<b>Id</b>	<b>Item #</b>	<b>Description</b>	<b>Quantity</b>	<b>Rev</b>	<b>Comments</b>
48	854-0009	BELTGUARD ASSEMBLY (INC. 49-50)	1		
49	N/A Sep.	BELTGUARD COVER (SEE 854-0009)	1		
50	33-0020	EDGING *(FOUR FEET REQUIRED)	1		
51	27-0015	BOLT	2		
52	9-0009	BUSHING	1		
53	10-0101	DRIVE PULLEY	1		
54	854-0007	BELTGUARD BACK ASSEMBLY (INCLUDES 55-57)	1		
55	33-0020	EDGING *(TWO FEET REQUIRED)	1		
56	N/A Sep.	DECAL- WARNING:BELTGUARD IN PLACE (SEE 34-9016)	1		
57	N/A Sep.	BELTGUARD BACK (SEE 854-0007)	1		
58	N/A Sep.	DECAL- CHECK OIL TAPE (SEE 34-9016)	1		
59	1-0013	ENGINE- 5.5 HP HONDA W/DECALS	1		
60	43-0073	KEY	1		
61	N/A Sep.	DECAL- CAUTION: ALLOW TO COOL (SEE 34-9016)	1		
62	N/A Sep.	DECAL- WARNING: MUFFLER HOT (SEE 34-9016)	1		
63	27-0070	BOLT	4		
64	23-0016	BUSHING	1		
65	23-0426	ELBOW	1		
66	15-0235	HOSE	1		
67	854-0064	AIR THROTTLE CONTROL ASSEMBLY (INC. 68-74)	1		
68	62-0126	THROTTLE CONTROL ADAPTER	1		
69	33-0394	AIR THROTTLE CONTROL	1		
70	45-0084	ENGINE THROTTLE CLIP	1		
71	23-0425	PLASTIC TUBE SUPPORT INSERT	2		
72	23-0315	NUT	1		
73	15-0238	TUBE *(TWO FEET REQUIRED)	1		
74	23-0328	FITTING	1		
75	27-0576	BOLT	1		
76	20-0614A01	BELT TENSIONER PLATE	1		
	34-9016	SAFETY DECAL KIT (INC. 5, 9, 14, 15, 46, 56, 58, 61-62)			
		*MUST ORDER IN ONE FOOT LENGTHS			



AD1-PH55-08M / AD1-PH55-08M (sn:20013434-99999999)

# PUMP



TORQUE SPECIFICATIONS			REQUIRED LOCKTITE
POSITION	FT-LBS	Nm	
2	17.0	23	-
5	19.9	27	-
6	4.8	6.5	-
20	17.7	24	-
22	14.8	20	-
26	8.9	12	-
37	28.0	38	-

KTOP MARKS ARE LOCATED ON TOP SURFACE OF THE RINGS  
 IMPORTANT: RINGS MUST BE ASSEMBLED IN THE POSITION SHOWN AND IN THE FOLLOWING NUMERICAL SEQUENCE

3. TAPER FACE RING  
 2. SCRAPER RING  
 1. OIL WIPER RING

NOTE: ONCE THE RINGS ARE IN PLACE ROTATE THEM SO THE GAPS ARE NOT ALIGNED.

Id	Item #	Description	Quantity	Rev	Comments
1	22-0253	EASY START VALVE	1		
2	27-8032	SCREW	2		
3	46-1171	AFTER COOLER	1		
4	N/A Sep.	AFTER COOLER GASKET (SEE 70-0393)	1		
5	27-9577	SCREW	6		
6	27-9575	SCREW	10		
7	46-1197	AIR SHROUD	1		
8	46-1172	HEAD	1		
9	N/A Sep.	HEAD GASKET (SEE 70-0393)	1		
10	22-0388	HOLDER PLATE VALVE	1		

Id	Item #	Description	Quantity	Rev	Comments
11	N/A Sep.	CYLINDER GASKET (SEE 70-0393)	1		
12	46-1170	CYLINDER	1		
13	N/A Sep.	CRANKCASE GASKET (SEE 70-0393)	1		
14	70-0392	RING SET - 65 MM	2		
14	70-0268	RING SET - 65.4 MM	2		
15	N/A	PISTON	2		
16	N/A	WRIST PIN	2		
17	N/A	SNAP RING	2		
18	N/A	CONNECTING ROD	2		
19	N/A	CONNECTING ROD BEARING	2		
20	27-8194	SCREW	4		
21	46-0818	CRANKCASE FILL PLUG W/ O-RING	1		
22	27-8002	BOLT	8		
23	46-0819	OIL FILL END CAP	1		
24	N/A Sep.	OIL FILL END CAP GASKET (SEE 70-0393)	1		
25	46-0820	SIGHT GLASS	1		
26	39-0106	OIL DRAIN PLUG	1		
27	N/A Sep.	OIL PAN O-RING (SEE 70-0393)	1		
28	N/A	OIL PAN	1		
29	N/A	CRANKCASE	1		
30	48-0060	BALL BEARING	1		
31	N/A	PISTON CRANKSHAFT	1		
32	48-0024	BALL BEARING	1		
33	N/A Sep.	END CAP GASKET (SEE 70-0393)	1		
34	26-0208	CRANKSHAFT SEAL	1		
35	46-1169	FRONT END CAP	1		
36	10-0131	FLYWHEEL	1		
37	27-8033	BOLT	1		
38	28-1032	WASHER	1		
39	43-0102	WOODRUFF KEY	1		
KIT	70-0393	GASKET KIT (INC. 4, 9, 11, 13, 24, 27, 33)			