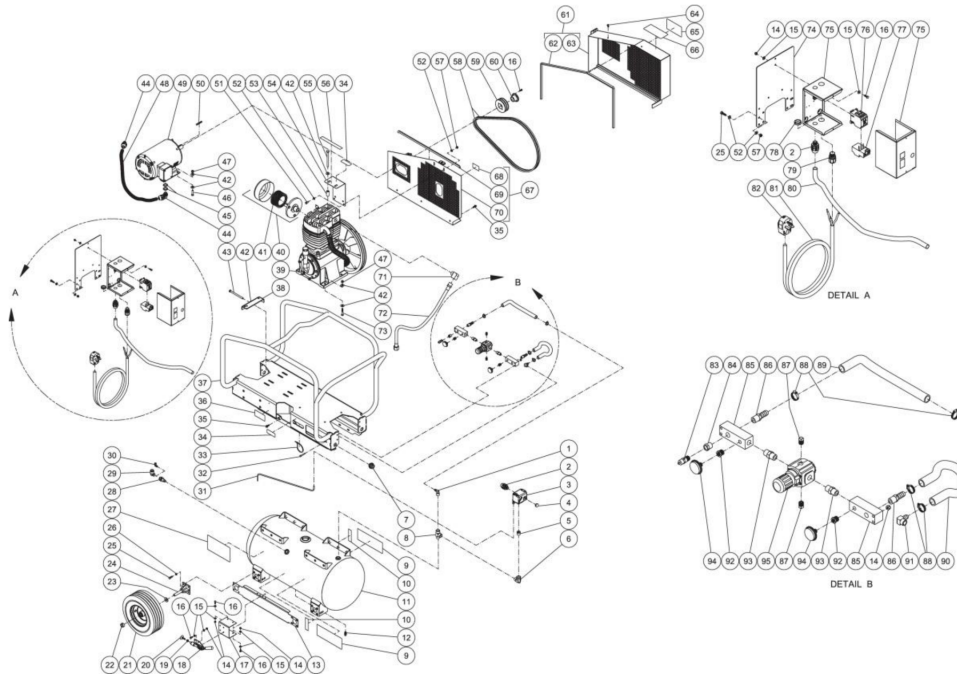




AM2-P375-30M / AM2-P375-30M (sn:0-99999999)

## TANK ASSEMBLY



Id	Item #	Description	Quantity
1	23-0418	ELBOW	1
2	32-0255	CONDUIT FITTING	2
3	22-0277	PRESSURE SWITCH	1
4	39-0014	PLUG HEYCO	1
5	23-0056	REDUCER	1
6	24-0006	ELBOW	1
7	24-0274	BULKHEAD FITTING	2
8	24-0242	STREET TEE	1
9	34-0828	DECAL- MI-T-M AIR COMPRESSORS	2
10	N/A Sep.	DECAL- TANK DRAIN (SEE 34-9016)	2
11	N/A	AIR TANK ASSEMBLY	1
12	23-0312	PETCOCK	1
13	20-0668A01	BRAKE BRACKET	1
14	30-0155	LOCKNUT	15
15	28-0002	WASHER	22

<b>Id</b>	<b>Item #</b>	<b>Description</b>	<b>Quantity</b>
16	27-0015	BOLT	13
17	20-0669A01	BRAKE BRACKET	1
18	33-0400	PUSH/PULL TOGGLE CLAMP	1
19	30-0004	HEX NUT	1
20	27-9550	ELEVATOR BOLT	1
21	14-0006	WHEEL	4
22	33-0351	COLLAR / SHAFT	4
23	28-0008	WASHER	4
24	20-0861A01	AXLE STUB BRACKET	4
25	27-0067	BOLT	20
26	29-0007	LOCKWASHER	16
27	N/A Sep.	DECAL- DANGER/WARNING/CAUTION (SEE 34-9016)	1
28	22-0398	CHECK VALVE	1
29	24-0041	ELBOW	1
30	23-0316	ELBOW	1
31	54-0034	COPPER LINE *(THREE FEET REQUIRED)	1
32	27-0019	BOLT	4
33	33-0022	CABLE TIE	1
34	N/A Sep.	DECAL- WARNING: RISK OF BURNS (SEE 34-9016)	2
35	27-9524	BOLT	15
36	N/A	DECAL- DATA PLATE	1
37	5-0250A01	BASEPLATE	1
38	20-0461A01	BELT TENSIONER PLATE	1
39	3-0304	PUMP	1
40	19-0237	FILTER CANISTER	1
41	19-0226	FILTER REPLACEMENT	1
42	28-0023	FLATWASHER	19
43	27-0133	BOLT	3
44	32-0254	CONDUIT ELBOW	2
45	32-0814	REDUCING WASHER	2
46	27-0119	BOLT	4
47	30-0159	LOCKNUT	8
48	32-0253	CONDUIT FLEX *(TWO FEET REQUIRED)	1
49	2-0167	MOTOR - 7.5 HP	1
50	43-0078	KEY	1
51	27-0066	BOLT	2
52	28-0003	WASHER	12
53	20-1020A52	SPACER	2
54	13-0192A01	BELTGUARD STABILIZER BRACKET	1

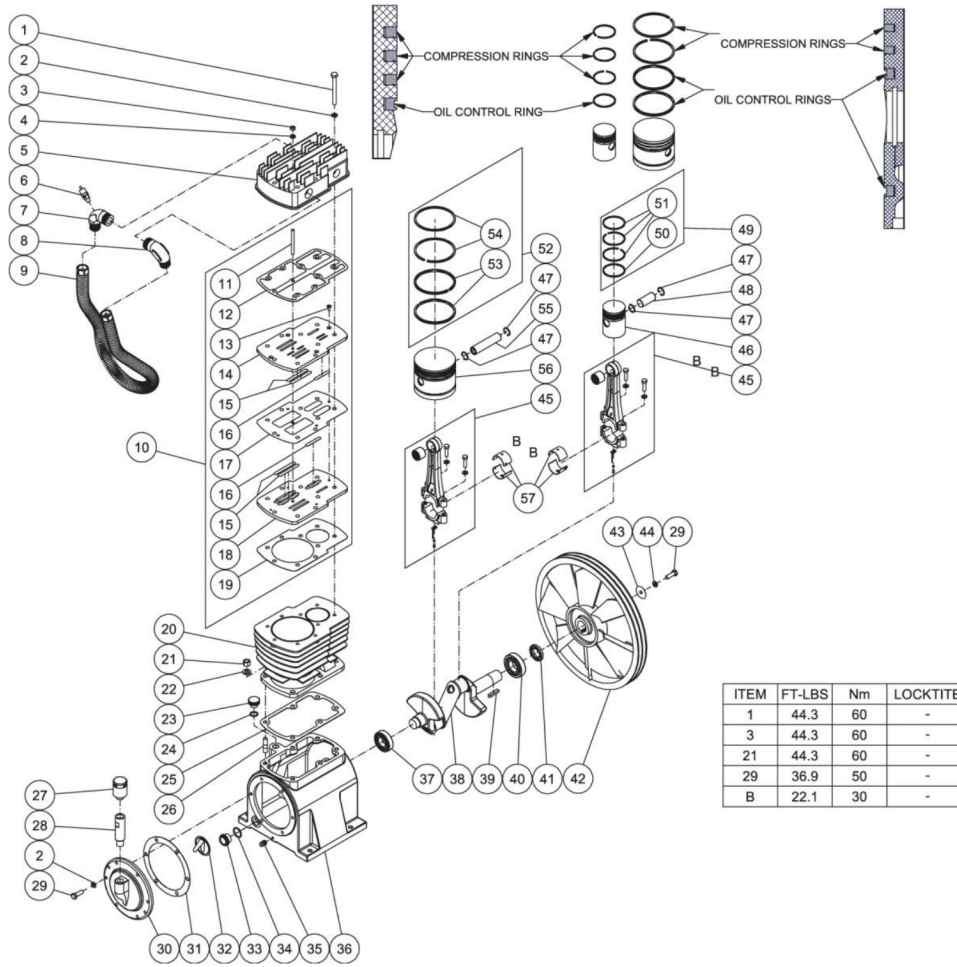
<b>Id</b>	<b>Item #</b>	<b>Description</b>	<b>Quantity</b>
55	27-8074	BOLT	2
56	N/A Sep.	DECAL- CHECK OIL TAPE (SEE 34-9016)	1
57	30-0157	LOCKNUT	6
58	11-0069	DRIVE BELT	2
59	10-0067	SHEAVE	1
60	9-0010	BUSHING	1
61	854-0067	BELTGUARD COVER ASSEMBLY (INC. 64, 65)	1
62	33-0020	EDGING *(FIVE FEET REQUIRED)	1
63	N/A Sep.	BELTGUARD COVER (SEE 851-0364)	1
64	33-0197	FASTENER	2
65	N/A Sep.	DECAL- MAINTENANCE INSTRUCTIONS (SEE 34-9016)	1
66	N/A Sep.	DECAL- OPERATING INSTRUCTIONS (SEE 34-9016)	1
67	854-0066	BELTGUARD BACK ASSEMBLY (INC. 57-59)	1
68	N/A Sep.	DECAL- WARNING: BELTGUARD IN PLACE (SEE 34-9016)	1
69	33-0020	EDGING *(THREE FEET REQUIRED)	1
70	N/A Sep.	BELTGUARD BACK (SEE 851-0363)	1
71	23-0081	ELBOW	1
72	15-0278	HOSE	1
73	27-0121	BOLT	4
74	13-0174A01	ELECTRIC PLATE	1
75	32-0890	ELECTRICAL BOX	1
76	32-0235	CONTACTOR	1
77	32-0483	OVERLOAD RELAY	1
78	32-0292	LOCKNUT	1
79	9-0046	CORD RELIEF	1
80	32-0253	CONDUIT FLEX *(THREE FEET REQUIRED)	1
81	33-0021	CORD *(TEN FEET REQUIRED)	1
82	32-0012	PLUG	1
83	22-0267	PRESSURE RELIEF VALVE	1
84	23-0017	BUSHING	1
85	51-0033	MANIFOLD BLOCK	2
86	23-0105	HOSE BARB	2
87	24-0009	PLUG	2
88	42-0011	HOSE CLAMP	4
89	15-0007	HOSE *(ONE FOOT REQUIRED)	1
90	15-0007	HOSE *(TWO FEET REQUIRED)	1
91	23-0050	ELBOW	1
92	23-0111	REDUCER	2
93	24-0010	NIPPLE	2

<b>Id</b>	<b>Item #</b>	<b>Description</b>	<b>Quantity</b>
94	22-0271	PRESSURE GAUGE	2
95	22-0395	ADJUSTABLE REGULATOR W/PLUG	1
	34-9016	DECAL KIT (INC. 9, 26, 37, 55, 58, 67, 68)	



AM2-P375-30M / AM2-P375-30M (sn:0-99999999)

## PUMP ASSEMBLY



ITEM	FT-LBS	Nm	LOCKTITE
1	44.3	60	-
3	44.3	60	-
21	44.3	60	-
29	36.9	50	-
B	22.1	30	-

Id	Item #	Description	Quantity
1	27-8072	BOLT	9
2	28-1059	COPPER WASHER	15
3	30-0058	NUT	1
4	28-1011	WASHER	1
5	46-1318	PUMP HEAD	1
6	22-0362	LP SAFETY VALVE	1
7	24-0310	OUTLET ELBOW W/PORT	1
8	24-0311	OUTLET ELBOW	1
9	46-1319	INTERCOOLER TUBE	1
10	70-0505	VALVE PLATE GASKETS/REEDS (INC. 11-19)	1

<b>Id</b>	<b>Item #</b>	<b>Description</b>	<b>Quantity</b>
11	N/A	STUD	1
12	N/A	GASKET	1
13	N/A	SCREW	4
14	N/A	UPPER VALVE PLATE	1
15	N/A	LP REED VALVE	4
16	N/A	HP REED VALVE	2
17	N/A	GASKET	1
18	N/A	LOWER VALVE PLATE	1
19	N/A	GASKET	1
20	46-1320	CYLINDER	1
21	N/A	HEX NUT	6
22	N/A	LOCKWASHER	6
23	46-1281	OIL FILL CAP	1
24	25-0160	O-RING	1
25	N/A	GASKET	1
26	N/A	STUD	6
27	46-1276	BREATHER ASSY	1
28	46-1277	BREATHER PIPE	1
29	N/A	BOLT	7
30	46-1278	REAR CRANKCASE COVER	1
31	N/A	GASKET	1
32	46-1279	OBSTRUCT OIL NET	1
33	46-1280	OIL LEVEL SIGHT GLASS	1
34	25-0150	O-RING	1
35	24-0009	PLUG	1
36	46-1321	PUMP CRANKCASE	1
37	48-0024	BALL BEARING	1
38	46-1322	PUMP CRANKSHAFT	1
39	43-0125	KEY	1
40	48-0014	BALL BEARING	1
41	N/A	OIL SEAL	1
42	10-0141	FLYWHEEL	1
43	N/A	WASHER	1
44	29-0055	LOCKWASHER	1
45	70-0506	KIT - CONNECTING ROD ASSY	2
46	46-1323	HP PISTON	1
47	46-1324	PISTON PIN SNAP RING	4
48	46-1325	HP PISTON PIN	1
49	70-0507	KIT - HP PISTON RINGS	1

<b>Id</b>	<b>Item #</b>	<b>Description</b>	<b>Quantity</b>	<b>Rev</b>	<b>Comments</b>
50	N/A	OIL RING	1		
51	N/A	COMPRESSION RING	3		
52	70-0508	KIT - LP PISTON RINGS	1		
53	N/A	OIL RING	2		
54	N/A	COMPRESSION RING	2		
55	46-1326	LP PISTON PIN	1		
56	46-1327	LP PISTON	1		
57	46-1328	CONNECTING ROD BUSHING	4		
KIT	70-0509	PUMP GASKETS KIT (INC. 12, 17, 19, 25, 31)	1		