

# **DIAMOND**

## **PRODUCTS**

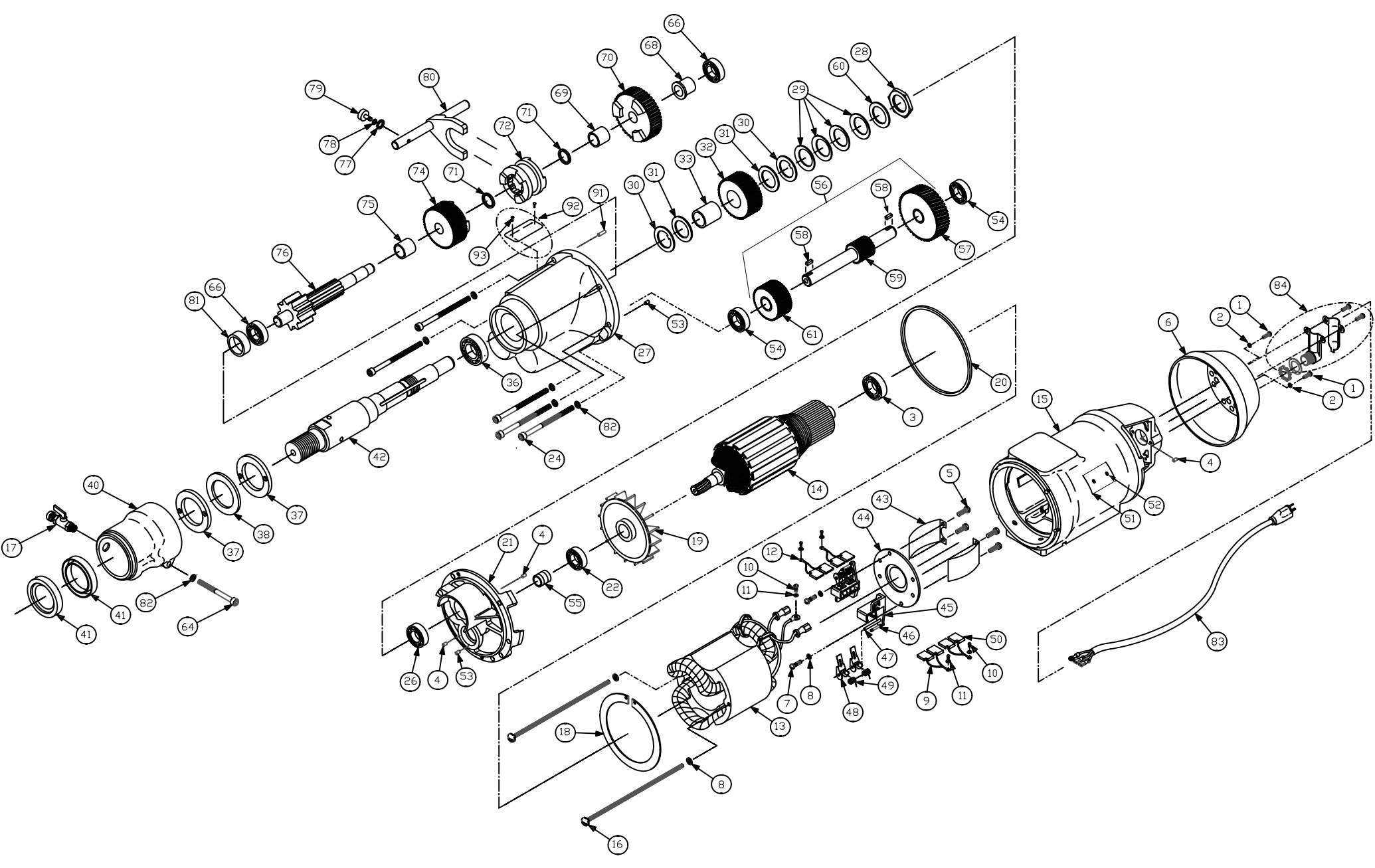
# **POWER UNIT**

# **PARTS LIST**

# **CB748**

June 2012

**PART# 1802045**



**CB748 Parts List  
Diamond Products**

| Diagram Number | Part No. | Qty. Req. | Description                            | Diagram Number | Part No. | Qty. Req. | Description                                     |
|----------------|----------|-----------|--|----------------|----------|-----------|---|
| 1              | 2700369  | 2         | Screw                                  | 56             | 2700338  | 1         | 1st. Intermediate Gear Assy (Inc. #'s 57-59,61) |
| 2              | 2900024  | 2         | Lock Washer, 1/4"                      | 57             | 2700305  | 1         | 1st. Intermediate Gear                          |
| *3             | 2700117  | 1         | Ball Bearing                           | 58             | 2700233  | 2         | Key   |
| 4              | 2700280  | 3         | Bearing Plug                           | 59             | 2700306  | 1         | 1st. Intermediate Pinion                        |
| 5              | 2700906  | 4         | Screw                                  | 60             | 2700126  | 1         | Washer  |
| 6              | 2700374  | 1         | Top Head                               | 61             | 2700269  | 1         | 1st. Intermediate Pinion Gearwheel              |
| 7              | 2700907  | 2         | Screw, #10-32 x 5/8"                   | 64             | 2701201  | 1         | Capscrew, Soc Hd., 1/4"-28 x 2-1/4"             |
| 8              | 2900038  | 2         | Lock Washer, #10                       | 66             | 2700103  | 2         | Ball Bearing                                    |
| 9              | 2700908  | 2         | Insulator, Sleeve for Brush            | *68            | 2700319  | 1         | Pinion Sleeve                                   |
| 10             | 2700909  | 5         | Screw, #8-32 x 5/16"                   | 69             | 2700109  | 1         | Sleeve Bearing (honed i.d. = .5625)             |
| 11             | 2701569  | 5         | Lock Washer, #8                        | 70             | 2700229  | 1         | 2nd Intermediate Gear (Inc. #69)                |
| 12             | 2701271  | 4         | Lead Terminal                          | 71             | 2700102  | 2         | Spring Ring                                     |
| 13             | 2700099  | 1         | 110V Field                             | 72             | 2700116  | 1         | Clutch  |
|                | 2701407  | 1         | 220V Field                             | 74             | 2700270  | 1         | 2nd Intermediate Gear (Inc. #75)                |
| 14             | 2700100  | 1         | 110V Armature                          | 75             | 2700308  | 1         | Sleeve Bearing                                  |
|                | 2702283  | 1         | 220V Armature                          | 76             | 2700124  | 1         | 2nd Intermediate Pinion                         |
| 15             | 2700125  | 1         | Field Case                             | 77             | 2700087  | 1         | Washer  |
| 16             | 2700910  | 2         | Screw, #10-32 x 3/4"                   | *78            | 2700088  | 1         | Belleville Washer                               |
| 17             | 4699921  | 1         | Water Petcock                          | 79             | 2700086  | 1         | Locking Screw                                   |
| 18             | 2700120  | 1         | Fan Baffle                             | *80            | 2700089  | 1         | Shift Lever Rod                                 |
| 19             | 2700108  | 1         | Fan                                    | 81             | 2700303  | 1         | Bearing Sleeve                                  |
| 20             | 2700111  | 1         | Wear Ring                              | 82             | 2900404  | 6         | Lock Washer                                     |
| 21             | 2700112  | 1         | Gear Case Cover                        | 83             | 2800152  | 1         | Cord  |
| *22            | 2700119  | 1         | Ball Bearing                           | 84             | 2800042  | 1         | Cord Relief                                     |
| 24             | 2700114  | 5         | Screw                                  | 91             | 2700444  | 1         | Dowell Pin (In gear case)                       |
| 26             | 2700106  | 1         | Roller Bearing                         | 92             | 2702095  | 1         | Speed Indicating Plate (On gear case)           |
| 27             | 2700113  | 1         | Gear Case (Includes #81)               | 93             | 2701262  | 2         | Screw (Speed indicating plate)                  |
| 28             | 2700080  | 1         | Nut                                    |                |          |           |   |
| *29            | 2700081  | 4         | Cone Lock Washer                       |                |          |           |   |
| 30             | 2700082  | 2         | Keyed Washer                           |                |          |           |   |
| 31             | 2700107  | 2         | Thrust Washer                          |                |          |           |   |
| 32             | 2700268  | 1         | Spindle Gear (Includes #33)            |                |          |           |   |
| 33             | 2700463  | 1         | Sleeve Bearing                         |                |          |           |   |
| 36             | 2700105  | 1         | Ball Bearing                           |                |          |           |   |
| 37             | 2700325  | 2         | Locking Washer                         |                |          |           |   |
| 38             | 2700451  | 1         | Spring Washer                          |                |          |           |   |
| 40             | 2700084  | 1         | Water Jacket Housing                   |                |          |           |   |
| *41            | 2700085  | 2         | Seal, Water                            |                |          |           |   |
| 42             | 2700121  | 1         | Spindle 1-1/4-7 Thread                 |                |          |           |   |
| 43             | 2700226  | 2         | Brush Insulator                        |                |          |           |   |
| 44             | 2700234  | 1         | Brush Holder Ring                      |                |          |           |   |
| 45             | 2700118  | 2         | Brush Holder (Incl. #46,#47)           |                |          |           |   |
| N/A            | Separate | 2         | Brush Holder Assy (Incl. 46,47, 48,49) |                |          |           |   |
| 46             | 2700364  | 1         | Spring Retaining Pin                   |                |          |           |   |
| 47             | 2701387  | 1         | Tension Arm Pin                        |                |          |           |   |
| 48             | 2700317  | 4         | Brush Tension Arm                      |                |          |           |   |
| 49             | 2700320  | 4         | Brush Spring                           |                |          |           |   |
| 50             | 2700110  | 4         | Brush & Lead                           |                |          |           |   |
| *51            | 2702093  | 1         | Name Plate                             |                |          |           |   |
| 52             | 2701262  | 1         | Drive Screw                            |                |          |           |   |
| 53             | 2700629  | 2         | Bearing Plug                           |                |          |           |   |
| 54             | 2700104  | 2         | Ball Bearing                           |                |          |           |   |
| 55             | 2700127  | 1         | Grease Sleeve                          |                |          |           |   |

**Clutch socket (not shown) part number 2705145**

**Lubrication: 10oz. (ML54-1) high temp. grease in gear case. Coat gears, inside of item 26, and pack all ball bearings.**

**\*Notes:**

3. Assemble seal towards cummutator.

22. Assemble with indent groove towards gear case, away from fan.

28. Torque to 100 ft/lbs, then adjust to allow spindle to slip at 140-150 ft/lbs.

29. Concave side faces keyed washer.

41. Apply a small amount of grease to rubber seals before pressing together.

51. Date code location.

68. Assemble to 2nd intermediate pinion with large diameter towards gear.

78. Assemble with large side against item 77.

80. Apply a light amount of oil before assembling to unit.

**IMPORTANT!** To assure product **SAFETY** and **RELIABILITY**, repairs, maintenance, and adjustment should be performed by authorized Service Centers and always use genuine replacement parts

| <b>2 Speed Super Power Unit</b> |      |       |      |         |
|---------------------------------|------|-------|------|---------|
| Model No.                       | Type | Volts | Amps | RPM     |
| CB748                           | 1    | 120   | 20   | 350/900 |

## EQUIPMENT AND PARTS WARRANTY

Diamond Products warrants all equipment manufactured by it against defects in workmanship or materials for a period of one (2) year from the date of shipment to Customer.

The responsibility of Diamond Products under this Warranty is limited to replacement or repair of defective parts at Diamond Products' Elyria, Ohio factory, or at a point designated by it, of such parts as shall appear to us upon inspection at such parts, to have been defective in material or workmanship, with expense for transportation and labor borne by Customer.

In no event shall Diamond Products be liable for consequential or incidental damages arising out of the failure of any Product to operate properly.

Integral units such as engines, electric motors, batteries, transmissions, etc., are excluded from this Warranty and are subject to the prime manufacturer's warranty.

**THIS WARRANTY IS IN LIEU OF ALL OTHER WARRANTIES, EXPRESSED OR IMPLIED, AND ALL SUCH OTHER WARRANTIES ARE HEREBY DISCLAIMED.**



333 Prospect Street, Elyria, Ohio 44035  
(440) 323-4616 • (800) 321-5336 • Fax (440) 323-8689

[www.diamondproducts.com](http://www.diamondproducts.com)