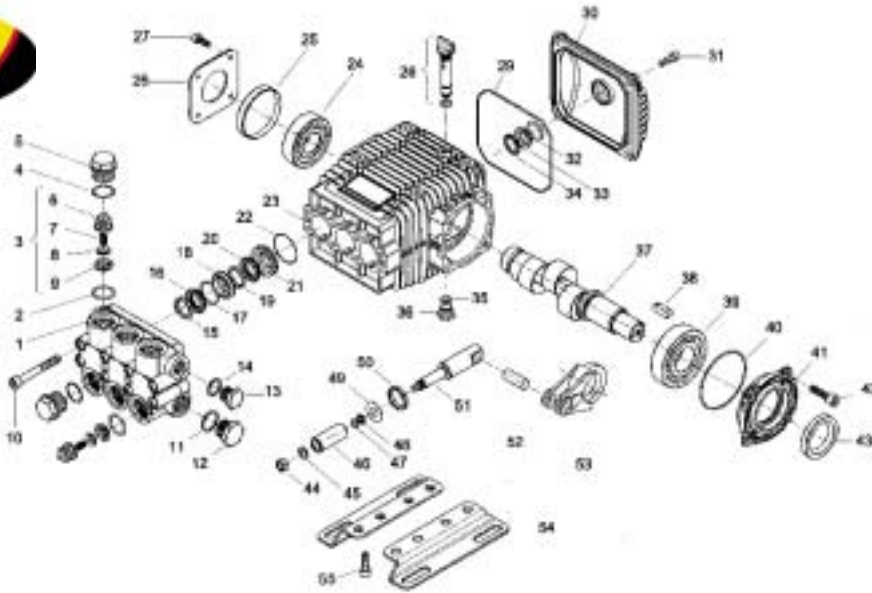


Legacy Model TML-3045-3545-3053; TMS-3060



POS NO.	PART NO.	DESCRIPTION	KIT	NO. PCS.
1	15-070071282	Pump Head		1
2	15-803182002	O-Ring Dia. 2.62 x 17.13	123	6
3	15-069846973	Check Valve	123	6
4	15-803182002	O-Ring Dia. 2.62 x 17.13		6
5	15-070040532	Ex. Deep Sealing Valve Cap M27x1.5		6
6	15-060105322	Valve Cage	123	6
7	15-940054512	Valve Spring	123	6
8	15-060104512	Poppet	123	6
9	15-060110512	Valve Seat	123	6
10	15-862985002	Screw TCEI M8x70 UNI 5931		8
11	15-824140002	Gasket for Coupling 21.2 x 26 x1		1
12	15-852629002	Plug G 1/2"		1
13	15-852579002	Plug G 3/8		1
14	15-824109002	Copper Gasket Dia. 17x22x1		1
15	15-050019322	Seal Packer DN 18/28	71, 76	3
16	15-802061002	V-Packing Dia. 18 x 28 x 5.5	71, 76	3
17	15-050221322	External Check Ring (EX 050088322)	71, 76	3
18	15-070013532	Front Gland D.18	71	3
19	15-050019322	Seal Packer DN 18/28	71, 76	3
20	15-802061002	V-Packing Dia. 18 x 28 x 5.5	71, 76	3
21	15-070014532	Rear Gland D.18	71	3
22	15-803080002	O-Ring	71, 76	3
23	15-070001092	Crankcase		1
24	15-812725002	Bearing Riv 6B 25		1
25	15-802102002	Cover 62x07 RCA		1
26	15-050045612	Crankcase Cover		1
27	15-862108002	Screw M6x16 UNI 5931		4
28	15-049832973	Filler Plug		1
29	15-803210682	O-Ring D.2.62 x 120.32		1
30	15-040117092	Rear Cover		1
31	15-862168002	Galvanized Screw M6x22 UNI 5931		4

POS NO.	PART NO.	DESCRIPTION	KIT	NO. PCS.
32	15-803189002	O-Ring Dia.2.62x18.72		1
33	15-040120322	Oil Sight Glass		1
34	15-801184002	Ring		1
35	15-803057002	O-Ring 2037 - 39.34 x 2.62		1
36	15-852543502	Cap G. 1/4 x 9 (EX852542002)		1
37/1	15-070037262	Crankshaft D.24 E=8 (L3045, L3545)		1
37/2	15-070038262	Crankshaft D.24 E=9 (L3053, S3060)		1
38	15-806534002	Tab 8x7x35		1
39	15-812776002	Bearing		1
40	15-803080702	O-Ring D.1.78 x 69.57		1
41	15-070003092	Support		1
42	15-862547002	Screw M8x18		4
43	15-802119002	Oil Seal 30x52x7		1
44	15-814561002	Stainless Steel Nut M8 UNI 5589		3
45	15-843642902	Washer Dia. 8.1x14x1		3
46	15-070008182	Ceramic Piston DN 18		3
47	15-803055502	Viton O-Ring Dia. 1.78x7.76		3
48	15-803912002	Backup Ring 2031 Dia. 10.8		3
49	15-843826002	Washer D.11.3x25x0.5 Copper		3
50	15-802063502	Axial Ring	65	3
51	15-070010512	Guide X D.18		3
52	15-852006282	Piston Ring		3
53/1	15-070006092	Conrod, Alum (3000 psi)		3
53/2	15-070005112	Conrod, Bronze (3500 psi)		3
54	15-040247612	Mounting Rail (Optional)		2
55	15-862495002	Screw M8x16 (Optional)		4
56	15-079802973	Mounting Rail Kit (Optional)		1

	KIT 123 CHECK VALVE/O-RING	KIT 65 PLUNGER OIL SEAL	KIT 71 PACKING/ BRASS ASSY	KIT 76 PACKING ONLY
KIT BREAKDOWN				
PART #	15-123	15-65	15-71	15-76
TOTAL PCS.	12	3	24	18