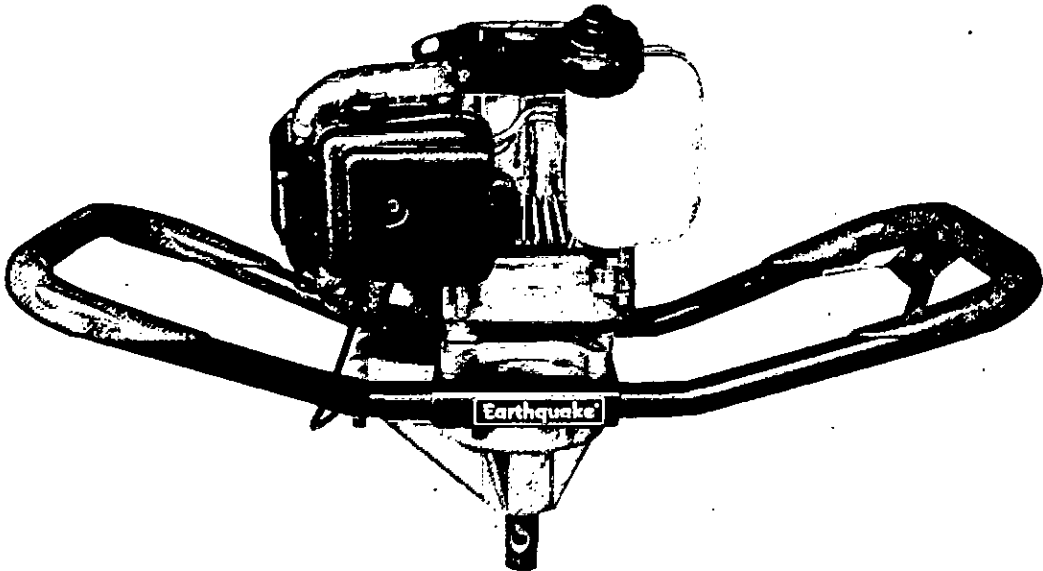


Earthquake®

OPERATING & PARTS MANUAL

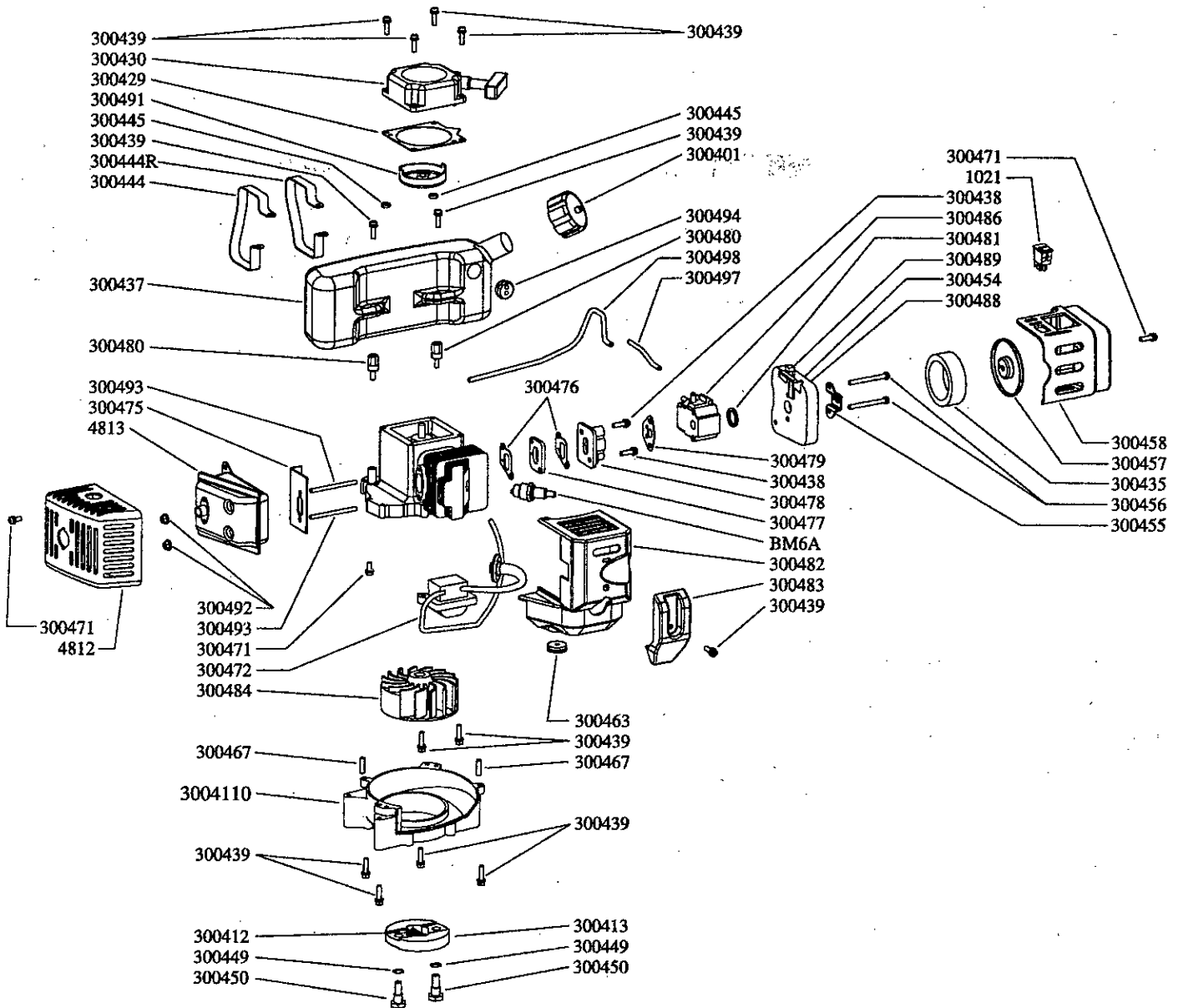
E43

Earth Auger Powerhead



Part # OME43
Rev. 3/06

© Copyright 2006 Ardisam, Inc.
All Rights Reserved. Printed in USA.



E43 ENGINE PARTS LIST

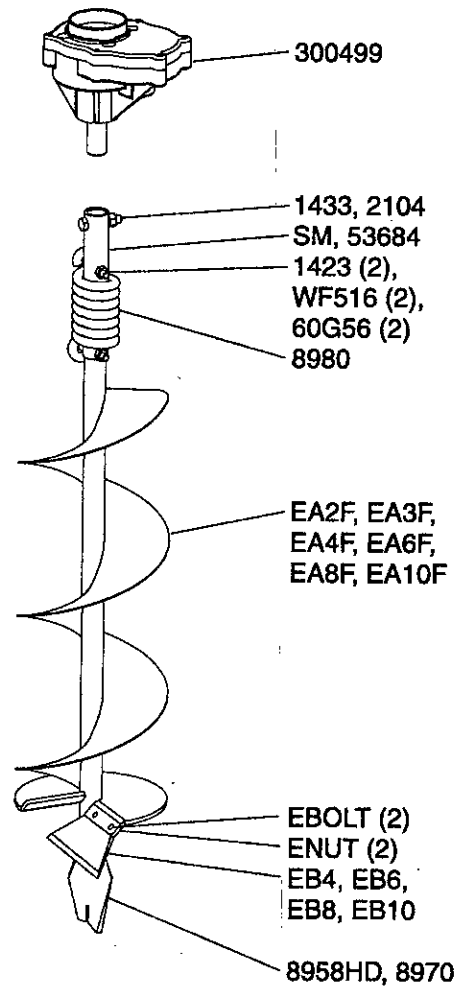
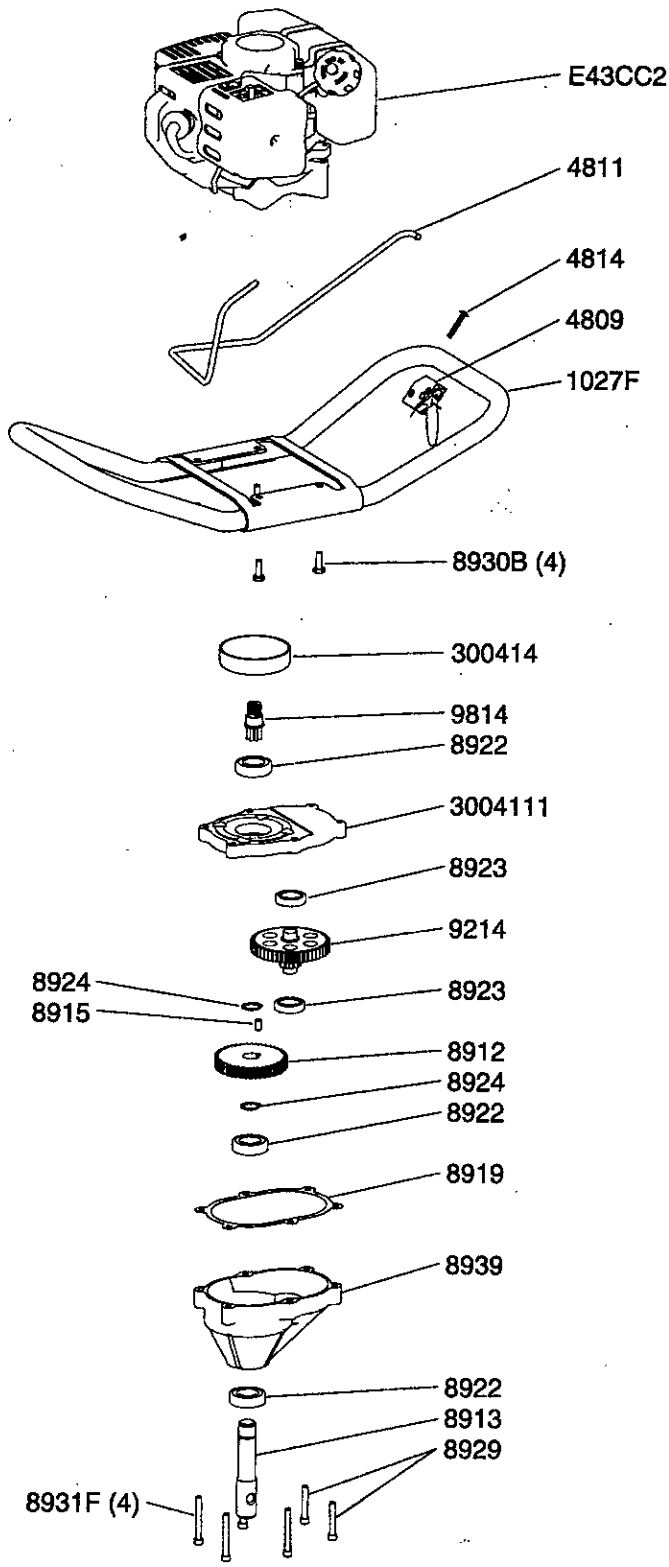


MINIMUM ORDER \$10.00

POWERHEAD PARTS

<u>Part #</u>	<u>Description</u>	<u>Part #</u>	<u>Description</u>
		<u>Qty.</u>	
1021	SWITCH, ROCKER	1	300472 COIL, IGNITION
4812	COVER, MUFFLER, METAL	1	300475 GASKET, MUFFLER
4813	MUFFLER, CATALYTIC CONVERTER	1	300476 GASKET, INTAKE
300401	CAP, FUEL, MANUAL VENTING	1	300477 HEAT DISK
300412	SPRING, CLUTCH	1	300478 WINDPIPE, INTAKE
300413	CLUTCH ROTOR ASSEMBLY	1	300479 GASKET, CARBURETOR
300429	PLATE, RECOIL	1	300480 SPACER, FUEL TANK THREADED
300430	RECOIL ASSEMBLY	1	300481 O-RING
300435	FILTER, AIR	1	300482 SHROUD, ENGINE
300437	FUEL TANK	1	300483 COVER, ENGINE SHROUD
300438	BOLT W/WASHER, M5 X 25MM	2	300484 FLYWHEEL, MAGNETO
300439	BOLT W/WASHER, M5 X 18MM	13	300486 CARBURETOR
300444	SUPPORT, FUEL TANK, LEFT	1	3004110 MOUNT RING AND SHROUD
300444R	SUPPORT, FUEL TANK, RIGHT	1	300488 CHOKE
300445	WASHER, M5	2	300489 LEVER, CHOKE
300449	WASHER, SPRING	2	300491 RECOIL CLUTCH
300450	BOLT, SHOULDER	2	300492 NUT, M6
300454	BASE, INTAKE	1	300493 BOLT, STUD M6 X 62MM
300455	PLATE, INTAKE COVER ADAPTER	1	300494 GROMMET, FUEL TANK, DOUBLE HOLE
300456	BOLT, M5 X 50MM	2	300497 HOSE, PRIMER LINE 4"
300457	COVER, AIR FILTER	1	300498 HOSE, PRIMER LINE 9"
300458	COVER, INTAKE	1	3004103 FILTER, FUEL (NOT SHOWN)
300463	GROMMET, ENGINE SHROUD	1	3004105 KIT, GROMMET & FUEL LINES (NOT SHOWN)
300467	PIN, LOCATING	2	BM6A SPARK PLUG
300470	KIT, FUEL LINE HOSE & FILTER (NOT SHOWN) ...	1	
300471	BOLT, M5 X 12MM	3	





E43 PARTS LIST



MINIMUM ORDER \$10.00

POWERHEAD PARTS

<u>Part #</u>	<u>Description</u>	<u>Qty.</u>	<u>Part #</u>	<u>Description</u>	<u>Qty.</u>
1022	RING, ADAPTER	1	8915	PIN, DOWEL 1/4" X 1/2", HARDENED STEEL	1
	(engine to handlebar plate)		8919	GASKET	1
1023	BOLT, M6 X 1 X 16MM	4	8922	BALL BEARING	3
	(ring to engine)		8923	BALL BEARING	2
1024F	HANDLEBAR	1	8924	SNAP RING	2
4800	THROTTLE HOUSING	1	8929	BOLT-SHCS, 1/4-20 X 1-1/2"	2
4802	SPRING, TRIGGER TORSION	1		(gear case bottom to gear case top)	
4803	PIN, CLEVIS, GROOVED 188 DIA.	1	8931F	BOLT-SHCS, 1/4-20 X 2"	4
4804	E-CLIP	1		(gear case to ring)	
4806	TRIGGER, THROTTLE	1	8939	GEAR CASE BOTTOM	1
4807	SCREW-SOC HD CAP, 6-32 UNC X 1/2"	1	8985	GEAR CASE TOP	1
4808	THROTTLE BARREL (NOT SHOWN)	1	9214	48T & 10T PINION GEAR CLUSTER, LEFT THRD	1
4809	THROTTLE TRIGGER ASSEMBLY	1	9814MM	PINION GEAR, 7 TOOTH THREADED	1
	(includes 4800, 4802, 4803, 4804, 4806, 4807, 4810)		300409	SPACER-DRUM	1
4810	NUT NYLOK NM NYLON 6-32 ZN	1	300414	CLUTCH DRUM	1
4811	CABLE, THROTTLE	1	300499	TRANSMISSION COMPLETE	1
8904WC	SCREW-PHILIPS PAN HD, #10 X 1-1/4"	1	E43CC	GAS ENGINE, 43CC	1
8912	GEAR 44T	1	IBE43	INSTRUCTION BOOKLET	1
8913	OUTPUT SHAFT 7/8"	1			