

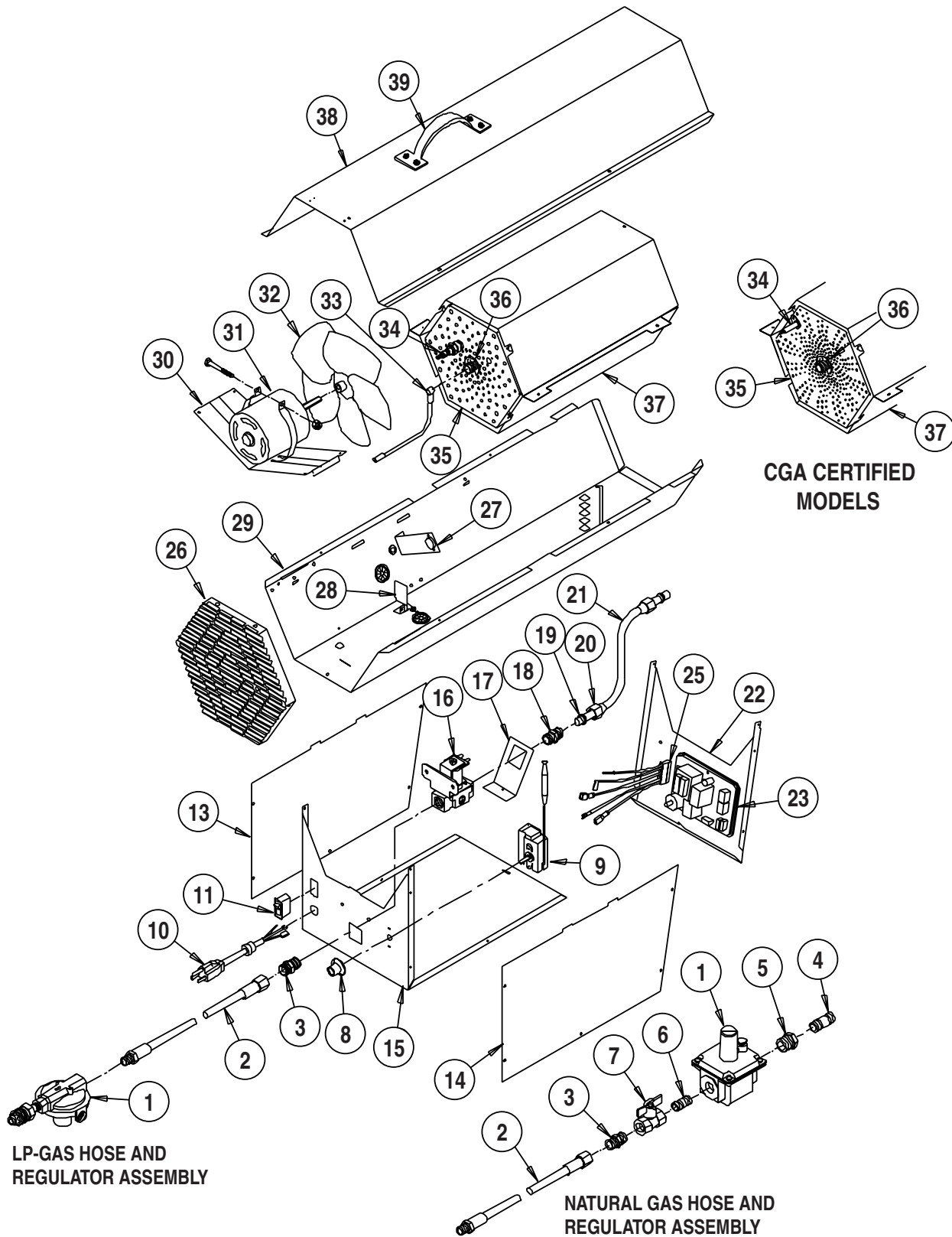


TRADESMAN

Portable Forced Air Heaters

Portable Forced Air Heaters

MODEL CP155C NON-DIAGNOSTIC



Portable Forced Air Heaters



PARTS IDENTIFICATION

Item	Description	Model CP155 C Non-Diagnostic
1	Regulator with POL (LP Gas)	400-06772
	Regulator (Natural Gas)	400-06713
2	Hose, Fixed X Swivel, 3/8 in. x 10 ft., LP	400-21841
	Hose, Fixed X Swivel, 3/8 in. x 15 ft. LP (Canada)	400-22278
	Hose, Fixed X Swivel, 1/2 in. x 10 ft. NG	400-20504
	Hose, Fixed X Swivel, 1/2 in. x 15 ft. NG (Canada)	400-22589
3	Adaptor, Hose, 3/8 in. (LP Gas)	310-06654
	Adaptor, Hose, 1/2 in. (Natural Gas)	310-02894
4	Nipple	130-02421
5	Bushing, Pipe	130-01195
6	Nipple, 1/2 in. Close	130-01305
7	Valve, Manual	130-05548
8	Thermostat Knob	130-22214
9	Thermostat	120-22213
10	Power Cord	120-05795
11	Switch, ON/OFF	120-03834
12	Lens, L.E.D.	120-22299
13	Case, Right Side	271-07162
14	Case, Left Side	271-06316
15	Case, Bottom and Back	271-22388
16	Solenoid Valve, 24V	120-22400
	Solenoid Valve, 120V	120-05144
17	Bracket Valve, 24V	225-22399
	Bracket Valve, 120V	220-05774
18	Union, Half	130-04786
19	Sleeve, Compression	130-03879
20	Nut, Compression	130-05772
21	Tube, Formed Copper, AGA (LP)	410-05775
	Tube, Formed Copper, AGA (NG)	410-06710
	Tube, Formed Copper, CGA (LP) Canada	410-22579
	Tube, Formed Copper, CGA (NG) Canada	410-22578
22	Case, Front	271-06218
23	Direct Spark Ignition Control	120-22301
	Direct Spark Ignition Control, AGA	120-07637
	Direct Spark Ignition Control, CGA (Canada)	120-22304
24	Transformer	120-06979
25	Wire Harness, AGA	120-07027
	Wire Harness, CGA (Canada)	410-22598
26	Air Inlet Guard	130-07288
27	Switch, Backflash, Assembly	400-06687
28	Switch, Air-proving/Sail, Assembly with Bracket	400-06739
29	Case, Barrel Bottom	271-22391
30	Bracket, Motor Mount	220-06400
31	Motor	120-03830
32	Fan	130-21575
33	Wire, Igniter, Black, AGA	120-09347
	Wire, Igniter, Red, CGA (Canada)	120-22590
34	Igniter, Spark Plug, AGA	410-08834
	Igniter, Spark Plug, CGA (Canada)	130-21803
35	Burner Plate, AGA	260-06429
	Burner Plate, CGA (Canada)	260-22588
36	Orifice with Retaining Rings, AGA (LP)	550-06685
	Orifice with Retaining Rings, AGA (NG)	550-06686
	Orifice with Retaining Rings, CGA (Canada) LP	550-22614
	Orifice with Retaining Rings, CGA (Canada) NG	550-22615
37	Panel, Heat Chamber (2 Required)	260-06804
38	Case, Top	271-06222
39	Handle	130-03941
40	Terminal Block	120-22296