



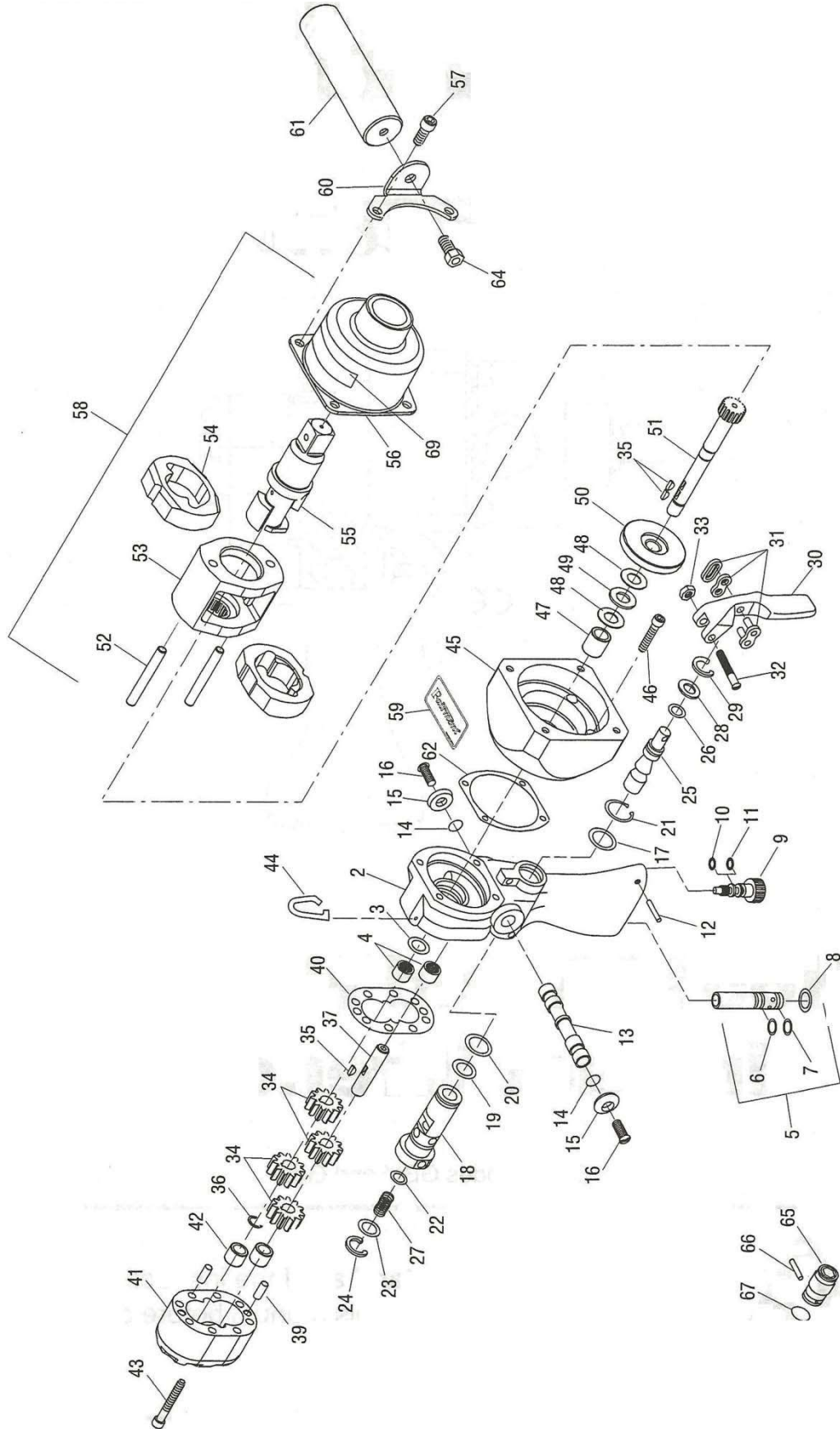
# 3/4" IMPACT WRENCH INSTRUCTIONS



**REIMANN & GEORGER CORPORATION**  
**CONSTRUCTION PRODUCTS**  
P/N 61-----

**BUFFALO, NY**  
**LE 8/11F**

# 3/4" IMPACT WRENCH PARTS DIAGRAM



### 3/4" IMPACT WRENCH PARTS LIST

Key	Description	Qty	Key	Description	Qty
2	HANDLE ASSEMBLY with ORIFICE and BEARINGS .....	1	36	Retaining ring, 25/64 external .....	1
3*	O-ring, 1/2 x 3/32-90 .....	1	37	Shaft, idler .....	1
4	Needle bearing .....	2	39	Dowel pin, 1/4 x 5/8 .....	2
5	FLOW CONTROL CARTRIDGE .....	1	40*	Gasket .....	1
6*	O-ring, 1/2 x 1/16-70 .....	1	41	MOTOR CAP ASSEMBLY .....	1
7*	O-ring, 7/16 x 1/16-70 .....	1	42	Needle bearing .....	2
8	Retaining ring, 11/16 internal .....	1	43	Socket head cap screw, 1/4-20 x 1-3/4 .....	8
9	Screw, adjustable torque output .....	1	44	Hook, lift .....	1
10*	O-ring, 1/4 x 1/16-70 .....	1	45	Adapter .....	1
11*	Back-up ring .....	1	46	Socket head cap screw, 1/4-20 x 1-1/4 .....	4
12*	Spring pin, 5/64 x 7/8 .....	1	47	Bearing, needle .....	1
13	Spool, directional .....	1	48	Washer, thrust .....	2
14*	O-ring, 7/16 x 1/16-68 .....	2	49	Bearing, thrust .....	1
15	Button .....	2	50	Spacer .....	1
16	Flat socket head cap screw, #10 x 1/2 .....	2	51	Driveshaft .....	1
17*	O-ring, 7/8 x 1/16-70 .....	1	52	Pin .....	2
18	Sleeve .....	1	53	Frame, hammer .....	1
19*	O-ring, .787 x .051-70 .....	1	54	Hammer .....	2
20*	O-ring, 3/4 x 1/16-90 .....	1	55	Anvil .....	1
21	Retaining ring, 7/8 external .....	1	56	Case, hammer .....	1
22*	O-ring, 7/16 x 3/32-90 .....	1	57	Socket head cap screw, 5/16-18 x 3/4 .....	4
23	Cap .....	1	58	Mechanism, 3/4 impact .....	1
24	Retaining ring, 3/4 internal .....	1	59	Decal .....	1
25	Spool, control .....	1	60	Bracket, handle mtg. .....	1
26*	O-ring, 5/16 x 1/16-70 .....	1	61	Handle .....	1
27	Spring, compression .....	1	62*	Gasket .....	1
28	Washer .....	1	64	Hex head cap screw, 3/8-16 x 3/4 .....	1
29	Retaining ring, 5/8 internal .....	1	65	Quick-change chuck, 5/8 hex (H6510A2 only) .....	1
30	Trigger .....	1	66	Pin, .199 x 1.25 (H6510A2 only) .....	1
31	Connecting link .....	1	67	O-ring, 1-1/4 x 1/8-70 (H6510A2 only) .....	1
32	Slotted round head machine screw, #10 x 1-1/4 .....	1	69	Decal, warning .....	1
33	Hex elastic stop nut, #10 .....	1			
34	Gear .....	4			
35	Key, 1/8 x 3/8 .....	3			
			*	Seal kit (includes items marked with an asterisk)	