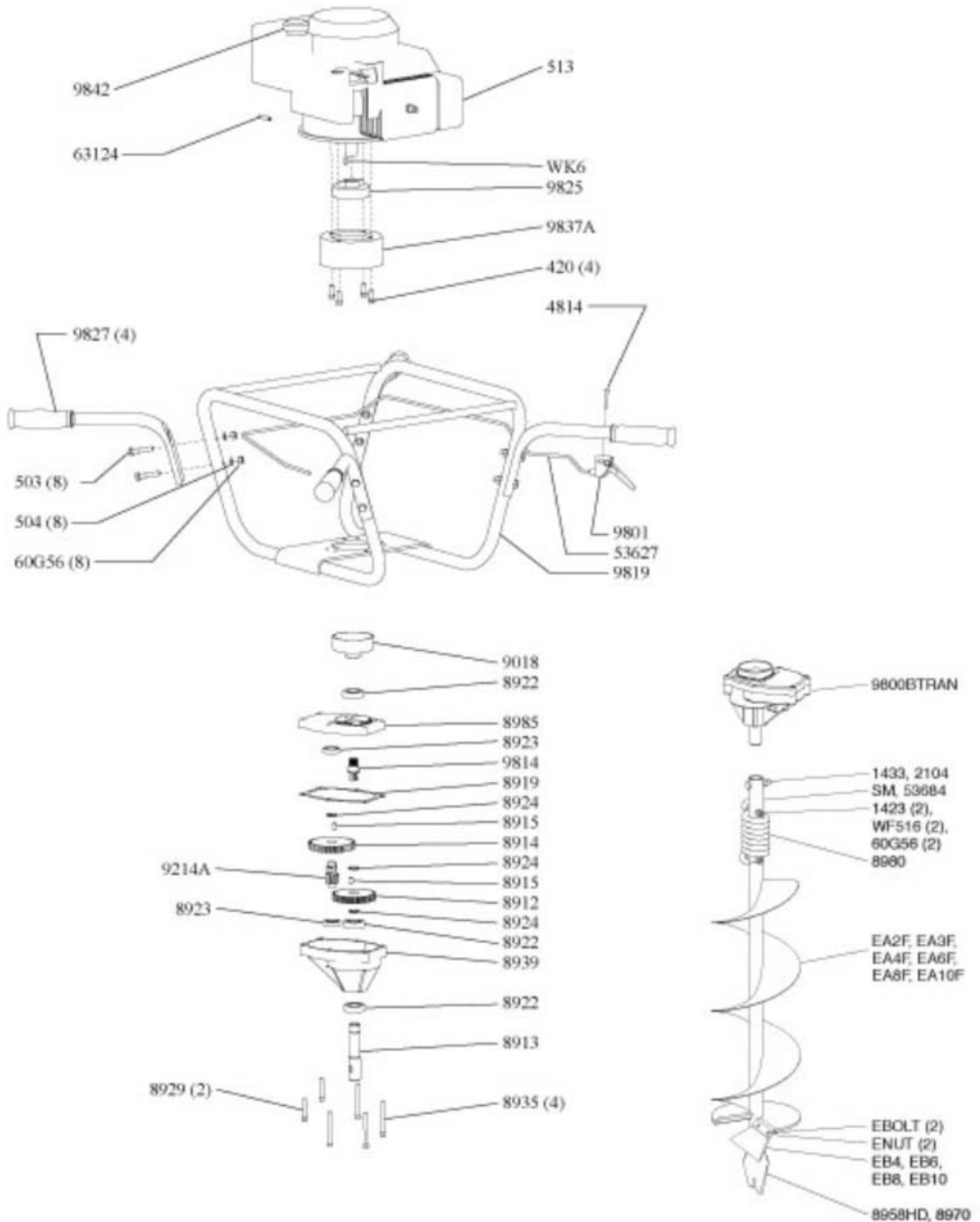


# 9800B™ EARTH AUGER POWERHEAD WITH BRIGGS & STRATTON® ENGINE

(MODEL YEAR 2008)



Key No.	Part No.	Description
420	420	420 BOLT 5/16-24 X 3/4IN 12PTF GR2 BLKZN F-T
513	513	513 ENGINE 675 SERIES QUANTUM
1423	1423	1423 BOLT 5/16-18X2 IN HHCS GR5 ZN P-T
8970	8970	8970 POINT EARTH 2 INCH AND 3 INCH AUGERS
8980	8980	8980 SHOCK SPRING EARTH
8985	8985	8985 GEAR CASE UPPER HALF UNPAINTED
9214A	9214A	9214A PINION 10T 14 T/IN 20° PA 3/4 OD
9827	9827	9827 HANDLE W/THROTTLE HOLE & 9211 GRIP 9800B
9837A	9837A	9837A MOUNT RING COMPLETE 9800
53627	53627	53627 CABLE THROTTLE 43.50 9800B
53684	53684	53684 SHOCK TOP 1-PC 11/05
EA3F	EA3F	EA3F EARTH AUGER 3 INCH REPL FT RH RED
EA8F	EA8F	EA8F EARTH AUGER 8 INCH REPL FT RH RED
EA10F	EA10F	EA10F EARTH AUGER 10 INCH REPL FT RH RED
EB4	EB4	EB4 EARTH BLADE 4 IN W/HARDWARE
EB6HD	EB6HD	EB6HD EARTH BLADE 6 IN HEAVY DUTY W/HARDWARE
EB8HD	EB8HD	EB8HD EARTH BLADE 8 IN HEAVY DUTY W/HARDWARE
EB10HD	EB10HD	EB10HD EARTH BLADE 10 IN HEAVY DUTY W/HARDWARE
ENUT	ENUT	ENUT NUT 1/4-28X7/32 IN HBW GR5 ZN
EXT6	EXT6	EXT6 EXTENSION 6 IN LONG 7/8 IN CONNECTION
SM	SM	SM SHOCK MECHANISM 7/8IN BORE
WF516	WF516	WF516 WASHER 5/16X7/8X5/64 IN GR8 ZN
WK6	WK6	WK6 KEY WOODRUFF 5/32 X 5/8 IN ZN