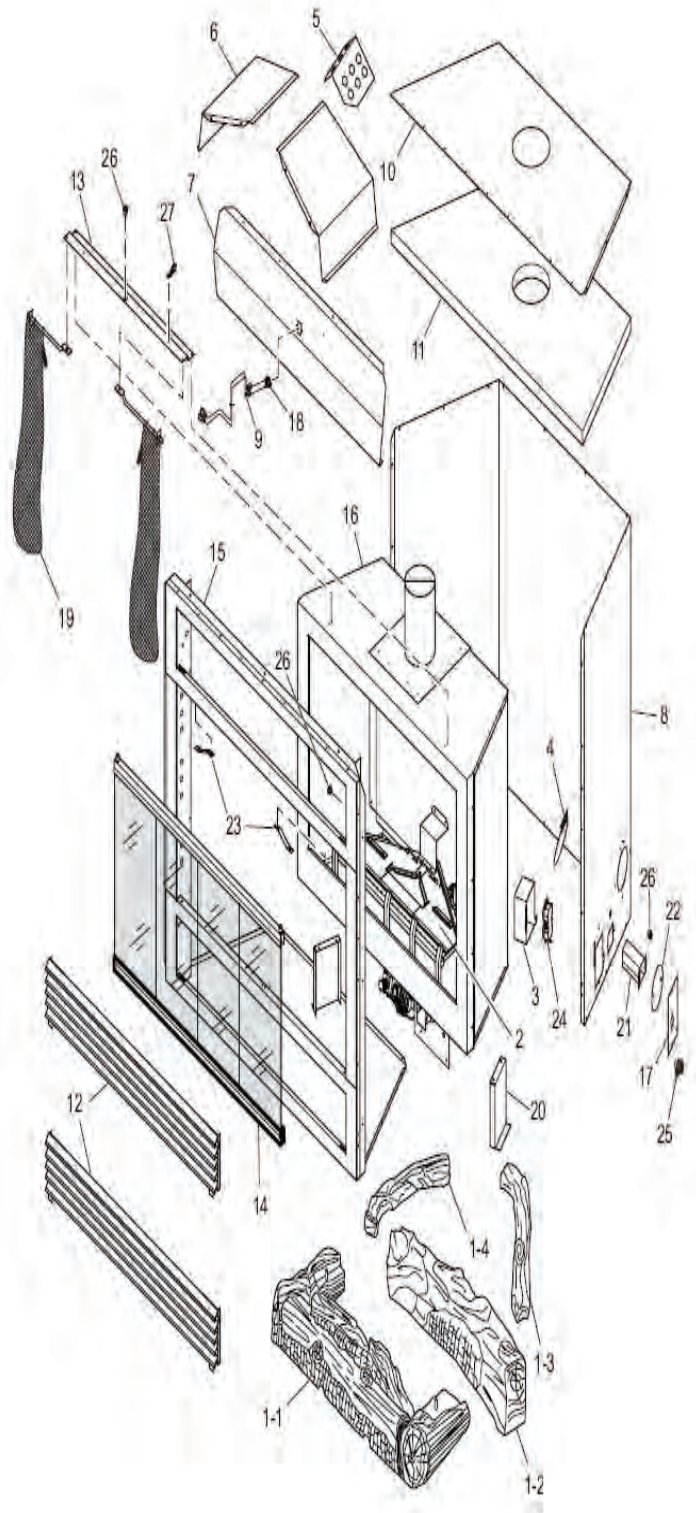


FMI Cottage 36" B-Vent Firebox

MODELS: CB36N, CB36P, CB36NE, CB36PE

	Part Number	Description
1	116108-01	Log Set
1-1	116109-01	Burner Base Log
1-2	116110-01	Rear Log
1-3	111802-05	Right Top Log
1-4	111802-04	Left Top Log
2	117447-01	Burner Assembly Complete
3	114889-01	Junction Box Duplex Plug
4	106967-01	Damper Assembly (Outside Air)
5	**	Vent Baffle
6	**	Diverter Panel
7	117455-01	Heat Deflector
8	**	Fireplace Surround
9	117450-01	Wire Harness Assembly
10	**	Fireplace Top
11	**	Fireplace Top Insulation
12	117445-01	Louver Assembly (Top & Bottom)
13	117458-01	Hanger Bracket
14	117446-01	Glass Door Assembly
15	**	Face Assembly
16	**	Firebox Assembly
17	110973-01	Cover Junction Box
18	106543-01	High Limit Switch
19	26782	Screen Assembly (2 Required)
20	26290	Firebox Leg
21	24460	Gas Conduit Assembly
22	21171	Gas Knock-Out Cover
23	20090	Spring Clip
24	14418	Duplex Plug Receptacle
25	14123	Bushing Universal Strain Relief
26	11408	Bushing 0.5" Electric
27	11404	Cable Tie Down
PARTS AVAILABLE - NOT SHOWN		
	26839	Ember Bag



FMI Cottage 36" B-Vent Burner Assembly

MODELS: CB36N, CB36P, CB36NE, CB36PE

	Part Number	Description
1	116317-01	Remote Ignitor Bracket
2	102445-01	Ignitor Piezo
3	108085-01	Pilot Orifice #51 (Nat. Millivolt)
	108085-02	Pilot Orifice #30 (LP Millivolt)
	108867-01	Pilot Orifice BL14LP (LP Ele Ign)
	108867-02	Pilot Orifice BL22N (Nat Ele Ign)
4	117702-01	Burner Orifice #45 (Natural Gas)
	26482	Burner Orifice #55 (LP Gas)
5	11214	Fitting Bulkead w/Nut Brass
6	11226	Washer, Flat 7/8"IDx2"ODx1/8"
7	11102	Screw, #8 x 3/8" PPH F Zinc.
8	117507-01	Pilot Assembly (Nat Millivolt)
	117507-02	Pilot Assembly (LP Millivolt)
	108866-01	Pilot Assembly PSE(Nat Ele Ign)
	108866-02	Pilo Assembly PSE (LP Ele Ign)
9	24360	Pilot Bracket
10	14399	Fitting Brass Elbow
11	26808	Valve Bracket
12	24389	Tube 3/8"Dia.x11"Aluminum
13	14396	Fitting Brass Straight
14	14512	Gas Contro IValve Millivolt (Nat)
	14513	Gas Control Valve Millivolt (LP)
	14569	Gas Control Valve Electric (Nat)
	14570	Gas Control Valve Electric (LP)
15	11105	Screw, #10 x 1/2" HWH LGM Zinc
16	14500	Fitting 3/8"MPTx1"Flare
17	11107	Screw, #10-32 x 1/4" PPH Zinc
18	11187	Screw, #8 x 1/4" PPH
19	14299	Air Shutter
20	116316-01	Ignition Module Bracket
21	11201	Nut, #8-32 Hex Zinc
22	11404	Cable, Tie 8.5" #10 Screwdown
23	110286-01	Ignition Module Syntek
24	11186	Screw, #8-32 x 1" PPH
25	14129	Transformer, 24V Class 2
26	11109	Screw, #8-32 x 1/2" PPH
27	111059-03	Ground Wire Harness
28	108863-01	Plug 4" Supply Connect
29	116719-01	Gas Valve Wire Harness (MV/PV)
30	116719-02	Gas Valve Wire Harness (MV)
31	116719-03	Gas Valve Wire Harness (PV)

