

# Earthquake<sup>®</sup>

## PARTS MANUAL 9800H 2-Person Earth Auger Powerhead (Insert to OM9800B)



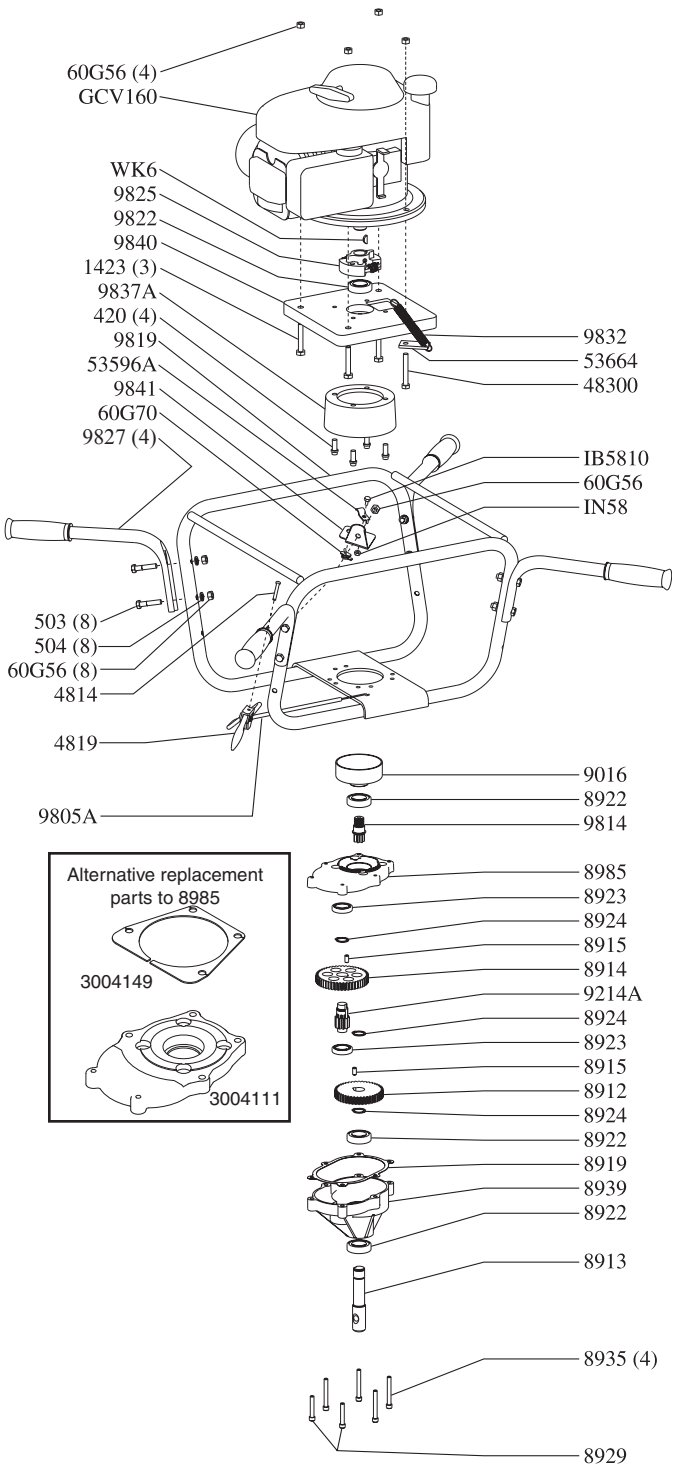
TM9800H  
Rev. 04/02/10  
© 2010 Ardisam, Inc.  
All Rights Reserved.

# EARTHQUAKE MODEL 9800H



**MINIMUM ORDER .....\$10.00**

Part #	Description	Qty.
1423	BOLT, 5/16-18 X 2" HHCS GR5 .....	3
420	BOLT, 5/16-24 X 3/4" C-BORE .....	4
4814	BOLT, 10-24 X 1-1/4" PHILLIPS TRUSS HD.....	1
4819	TRIGGER ASSEMBLY LONG THROW.....	1
	(includes p/n 4814)	
48300	BOLT, 5/16-18 X 2-1/4" HHCS GR5 .....	1
503	BOLT, 5/16-18 X 1-1/2" HH.....	8
504	LOCKWASHER, 5/16" SPRING .....	7
53596A	CLAMP, CABLE YELLOW ZINC .....	1
53664	TAB, THROTTLE .....	1
60G56	NUT-LOC, 5/16-18 BI-WAY .....	12
60G70	TOGGLE SWITCH, ON-OFF.....	1
8912	GEAR, 44T 3/4" HOLE .....	1
8913	SHAFT, OUTPUT 7/8" .....	1
8914	GEAR, 48T HARD .....	1
8915	DOWEL PIN, STEEL 1/4" X 1/2" .....	2
8919	GASKET, POWERHEAD TRANSMISSION .....	1
8922	BEARING, BALL R12 DOUBLE LIP .....	3
8923	BEARING, BALL R10 .....	2
8924	RING, SNAP EXTERNAL 3/4".....	3
8929	BOLT, 1/4-20 X 1-1/2" SHCS.....	2
8935	BOLT, 1/4-20 X 2-1/2" SHCS.....	4
8939	GEAR CASE, LOWER HALF W/BEARINGS .....	1
8985	GEAR CASE, UPPER HALF W/BEARINGS .....	1
*3004149	SHIM, 9800 TRANSMISSION TOP .....	1
*3004111	GEAR CASE TOP 33/43/51.771 CC HP ENGINES .....	1
9016	CLUTCH DRUM, 3" THREADED .....	1
9214A	GEAR, 10T CLUSTER PINION HT .....	1
92TRAN	TRANSMISSION ASSEMBLY 30:1 .....	1
9805A	CABLE ONLY, THROTTLE.....	1
9814	GEAR, 7T PINION THREADED .....	1
9827	HANDLE W/THROTTLE HOLE & GRIP.....	4
9819	HANDLEBAR FRAME WELDMENT .....	1
9822	BEARING, BALL R14-2RS .....	1
9825	ROTOR ASSEMBLY, CENTRIFUGAL CLUTCH ...	1
9832	SPRING, THROTTLE CONTROL .....	1
9837A	MOUNT RING .....	1
9840	PLATE ADAPTER, MOUNT RING .....	1
9841	BRACKET, THROTTLE CABLE CLAMP .....	1
GCV160	ENGINE, 5.5 HP HONDA VERT SHAFT.....	1
IB5810	BOLT, 5MM X 0.8 X 10MM HH.....	1
IN58	NUT, 5MM X 0.8 NYLOC.....	1
WK6	WOODRUFF KEY #6 .....	1



\* PART #s 3004149 and 3004111 ARE REPLACEMENT PARTS AVAILABLE FOR PART # 8985.