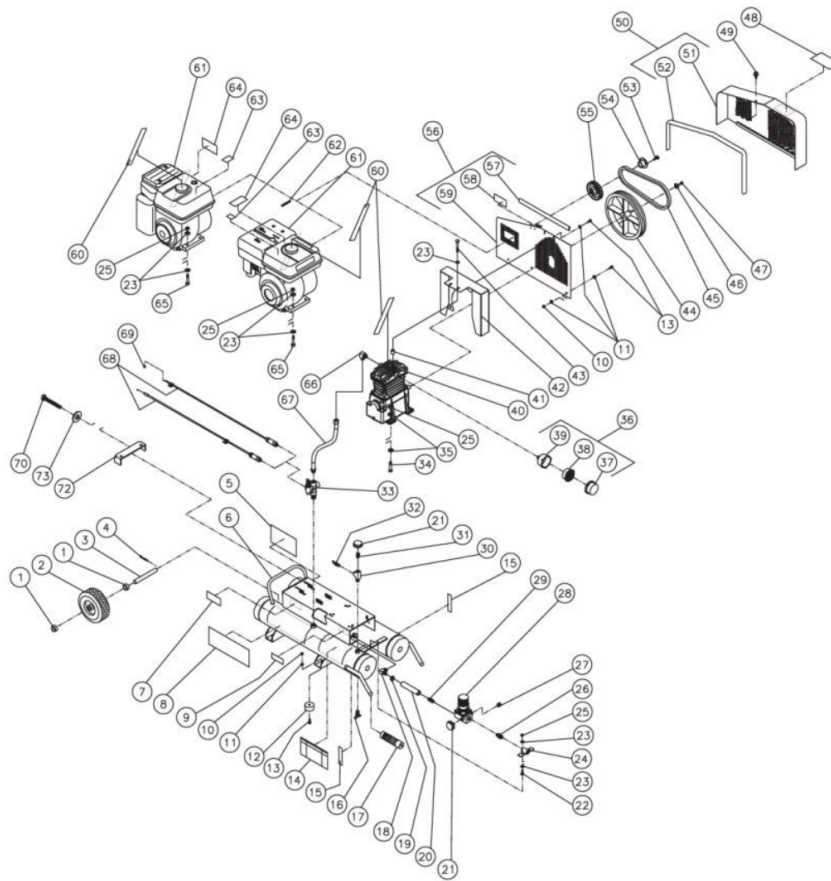




AC1-PV06-08M / AC1-PV06-08M (sn:346515-20005740)

TANK ASSEMBLY



Id	Item #	Description	Quantity	Rev	Comments
1	20-0314A01	AXLE SPACER	2		
2	14-0080	WHEEL	1		
3	20-0420	AXLE	1		
4	43-0092	COTTER PIN	2		

Id	Item #	Description	Quantity	Rev	Comments
5	34-0817	DECAL-MAINTENANCE INSTRUCTIONS	1		
6	854-0027	AIR TANK ASSEMBLY (INC. 9, 14, 15)	1		
7	N/A	DECAL- DATA PLATE	1		
8	34-0814	DECAL- MI-T-M	1		
9	34-0823	DECAL- WARNING: HOT SURFACE	1		
10	30-0155	LOCKNUT	9		
11	28-0002	WASHER	12		
12	14-0069	ISOLATOR	4		
13	27-0015	BOLT	9		
14	34-0819	DECAL- DANGER/WARNING/CAUTION	1		
15	34-0815	DECAL-DRAIN TANK	2		
16	23-0312	DRAIN VALVE	2		
17	7-0143	HANDLE GRIPS	2		
18	23-0418	ELBOW	1		
19	42-0011	HOSE CLAMP	2		
20	15-0007	HOSE *(ONE FOOT REQUIRED)	1		
21	22-0257	PRESSURE GAUGE	2		
22	27-0067	BOLT	2		
23	28-0003	WASHER	20		
24	20-0421A01	REGULATOR MOUNTING BRACKET	1		
25	30-0157	LOCKNUT	10		
26	24-0010	NIPPLE	1		
27	N/A	REGULATOR PLUG	1		
28	22-0231	REGULATOR-ADJUSTABLE	1		
29	23-0105	HOSE BARB	1		
30	23-0127	STREET TEE	1		
31	23-0111	ADAPTER	1		
32	22-0228	SAFETY RELIEF VALVE	1		
33	22-0346	PILOT VALVE	1		
34	27-0068	BOLT	4		
35	28-0022	WASHER	8		
36	19-0083	AIR FILTER ASSEMBLY W/ COMPRESSOR (INC. 37-39)	1		
37	19-0084	FILTER HOUSING	1		
38	19-0082	FILTER ELEMENT	1		
39	N/A Sep.	FILTER HOUSING W/ COMPRESSOR (SEE 19-0083)	1		
40	3-0215	PUMP	1		
41	33-0358	SPACER	2		
42	20-0612A01	AIR SHROUD	1		
43	27-0074	BOLT	2		

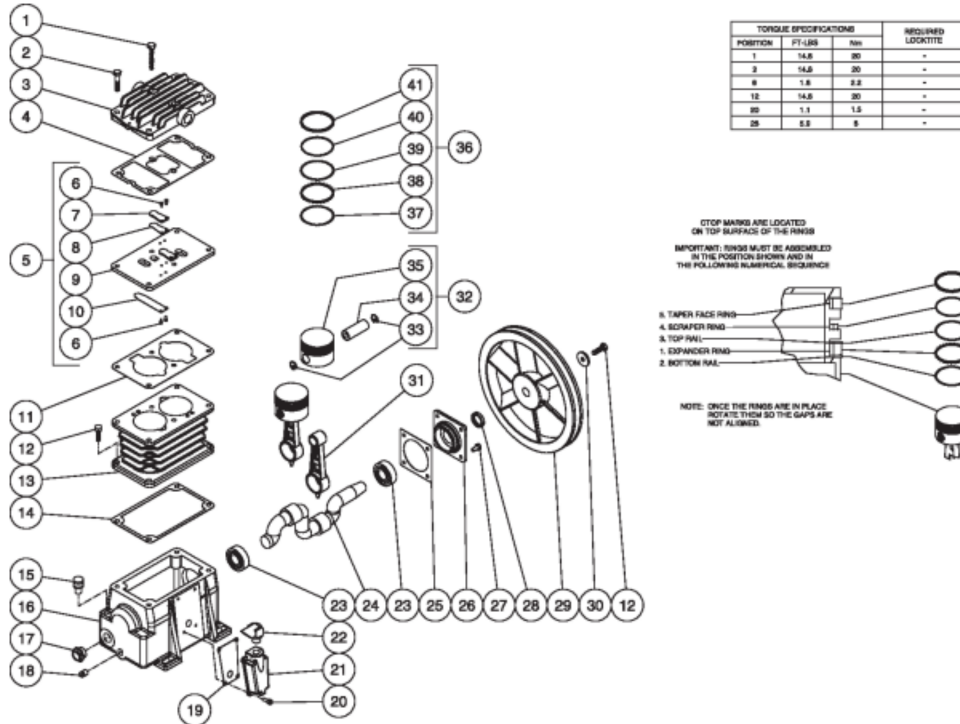
Id	Item #	Description	Quantity	Rev	Comments
44	10-0115	FLYWHEEL W/COMPRESSOR	1		
45	11-0011	DRIVE BELT	1		
46	N/A Sep.	FLATWASHER FLYWHEEL (SEE 3-0215)	1		
47	27-0067	BOLT W/COMPRESSOR	1		
48	34-0821	DECAL- OPERATING INSTRUCTIONS	1		
49	33-0197	FASTENER	1		
50	854-0009	BELTGUARD ASSEMBLY (INC. 51-52)	1		
51	N/A Sep.	BELTGUARD COVER (SEE 854-0009)	1		
52	33-0020	EDGING *(FOUR FEET REQUIRED)	1		
53	27-0015	BOLT W/BUSHING	2		
54	9-0009	BUSHING	1		
55	10-0101	DRIVE PULLEY	1		
56	854-0007	BELTGUARD BACK ASSEMBLY (INC. 57-59)	1		
57	33-0020	EDGING *(TWO FEET REQUIRED)	1		
58	34-0575	DECAL- WARNING: BELTGUARD IN PLACE	1		
59	N/A Sep.	BELTGUARD BACK (SEE 854-0007)	1		
60	34-0816	DECAL- CHECK OIL TAPE	1		
61	1-0013	ENGINE- 5.5 HP HONDA (AC1-PH55-08M)	1		
61	1-0069	ENGINE- 6.0 HP VANGUARD (AC1-PV06-08M)	1		
62	43-0073	KEY	1		
63	34-0588	DECAL- CAUTION: ALLOW TO COOL	1		
64	34-0130	DECAL- WARNING: MUFFLER HOT	1		
65	27-0070	BOLT	4		
66	23-0426	ELBOW	1		
67	15-0235	HOSE	1		
68	33-0294	THROTTLE CONTROL- 5.5 HONDA (AC1-PH55-08M)	1		
69	33-0263	THROTTLE CONTROL- 6.0 VANGUARD (AC1-PV06-08M)	1		
69	62-0126	THROTTLE CONTROL ADAPTER (AC1-PH55-08M)	1		
70	27-0576	BOLT	1		
71	28-0023	WASHER	1		
72	20-0614A01	BELT TENSIONER PLATE	1		

*MUST ORDER IN ONE FOOT LENGTHS



AC1-PV06-08M / AC1-PV06-08M (sn:346515-20005740)

PUMP



Id	Item #	Description	Quantity	Rev	Comments
1	27-0071	SCREW	2		
2	27-0069	SCREW	4		
3	46-1199	CYLINDER HEAD	1		
4	N/A Sep.	HEAD GASKET (SEE 70-0326)	1		
5	46-0952	VALVE PLATE ASSEMBLY (INC. 6-10)	2		
6	N/A Sep.	VALVE SCREW (SEE 70-0327)	8		
7	N/A Sep.	VALVE STOP (SEE 70-0327)	2		
8	N/A Sep.	OUTLET REED VALVE (SEE 70-0327)	2		
9	N/A	VALVE PLATE	1		
10	N/A Sep.	INLET REED VALVE (SEE 70-0327)	2		
11	N/A Sep.	CYLINDER VALVE PLATE GASKET (SEE 70-0326)	1		
12	27-0067	SCREW	5		
13	46-0953	CYLINDER	1		
14	N/A Sep.	CYLINDER TO CRANKCASE GASKET (SEE 70-0326)	1		

Id	Item #	Description	Quantity	Rev	Comments
15	46-1144	OIL FILL PLUG	1		
16	46-1194	CRANKCASE	1		
17	46-1145	OIL SIGHT GLASS	1		
18	24-0082	PLUG	1		
19	26-0292	GASKET	1		
20	27-8885	BOLT	4		
21	46-1195	COVER	1		
22	46-1196	ELBOW	1		
23	48-0016	BEAR BALL	2		
24	46-0955	CRANKSHAFT	1		
25	N/A Sep.	FLANGE GASKET (SEE 70-0326)	1		
26	46-0957	FLANGE	1		
27	27-0014	SCREW	4		
28	26-0246	SHAFT OIL SEAL	1		
29	10-0115	FLYWHEEL	1		
30	N/A Sep.	WASHER W/CRANKSHAFT (SEE 46-0955)	1		
31	46-0958	CONNECTING ROD	2		
32	70-0329	PISTON KIT (INC. 33-35)	2		
33	N/A Sep.	SNAP RING (SEE 70-0329)	4		
34	N/A Sep.	WRIST PIN (SEE 70-0329)	2		
35	N/A Sep.	PISTON (SEE 70-0329)	2		
36	70-0328	PISTON SEALS KIT (INC. 37-41)	2		
37	N/A Sep.	BOTTOM RAIL (SEE 70-0328)	2		
38	N/A Sep.	EXPANDER RING (SEE 70-0328)	2		
39	N/A Sep.	TOP RAIL (SEE 70-0328)	2		
40	N/A Sep.	SCRAPER PISTON RING (SEE 70-0328)	2		
41	N/A Sep.	TAPER FACE PISTON RING (SEE 70-0328)	2		
KIT	70-0326	GASKET KIT (INC. 4, 11, 14, 25)			
KIT	70-0327	VALVE PLATE KIT (INC. 6-8, 10)			
KIT	70-0328	PISTON SEALS KIT (INC. 37-41)			
KIT	70-0329	PISTON KIT (INC. 33-35)			