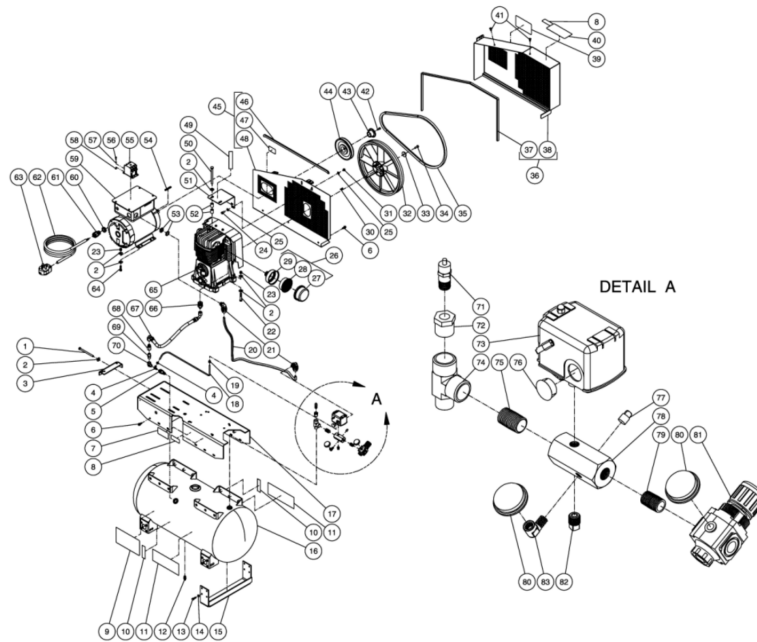




AC2-SE05-30M / AC2-SE05-30M (sn:20024615-99999999)

TANK ASSEMBLY



Id	Item #	Description	Quantity	Rev	Comments
1	27-0133	BOLT	1		
2	28-0023	FLATWASHER	19		
3	20-0461A01	BELT TENSIONER PLATE	1		
4	23-0316	ELBOW	1		
5	22-0334	CHECK VALVE	1		
6	27-9524	BOLT	15		
7	N/A	DECAL- DATA PLATE	1		
8	N/A Sep.	DECAL- WARNING: RISK OF BURNS (SEE 34-9016)	2		
9	N/A Sep.	DECAL- DANGER/WARNING/CAUTION (SEE 34-9016)	1		
10	N/A Sep.	DECAL- TANK DRAIN (SEE 34-9016)	2		
11	34-0828	DECAL- MI-T-M COMPRESSOR	2		
12	23-0312	PETCOCK	1		
13	27-0067	BOLT	16		
14	29-0007	LOCKWASHER	16		

Id	Item #	Description	Quantity	Rev	Comments
15	20-0671A01	SUPPORT BRACKET	2		
16	N/A	AIR TANK ASSEMBLY	1		
17	5-0197A01	BASEPLATE	1		
18	54-0034	TUBE *(THREE FEET REQUIRED)	1		
19	23-0315	COMPRESSION NUT	1		
20	32-0253	CONDUIT FLEX *(THREE FEET REQUIRED)	1		
21	32-0254	CONDUIT ELBOW	2		
22	27-0122	BOLT	4		
23	30-0159	LOCKNUT	8		
24	27-0066	BOLT	2		
25	28-0003	WASHER	4		
26	19-0219	AIR FILTER ASSEMBLY (INC. 27-29)	1		
27	N/A Sep.	REAR FILTER HOUSING (SEE 19-0219)	1		
28	19-0220	AIR FILTER ELEMENT	1		
29	N/A Sep.	FRONT FILTER HOUSING (SEE 19-0219)	1		
30	43-0102	KEY	1		
31	30-0157	LOCKNUT	2		
32	10-0095	FLYWHEEL W/COMPRESSOR	1		
33	28-1032	FLATWASHER FLYWHEEL W/COMPRESSOR	1		
34	27-8433	BOLT W/COMPRESSOR	1		
35	11-0062	DRIVE BELT	1		
36	854-0067	FRONT BELTGUARD ASSEMBLY (INC. 37-38)	1		
37	33-0020	EDGING *(FIVE FEET REQUIRED)	1		
38	N/A Sep.	FRONT BELTGUARD (SEE 854-0067)	1		
39	N/A Sep.	DECAL- MAINTENANCE INSTRUCTIONS (SEE 34-9016)	1		
40	N/A Sep.	DECAL- OPERATING INSTRUCTIONS (SEE 34-9016)	1		
41	33-0197	FASTENER	2		
42	27-0015	BOLT	2		
43	9-0010	BUSHING	1		
44	10-0128	SHEAVE	1		
45	854-0066	BACK BELTGUARD ASSEMBLY (INC. 46-48)	1		
46	33-0020	EDGING *(THREE FEET REQUIRED)	1		
47	N/A Sep.	DECAL- WARNING: BELTGUARD IN PLACE (SEE 34-9016)	1		
48	N/A Sep.	BACK BELTGUARD (SEE 854-0066)	1		
49	N/A Sep.	DECAL- CHECK OIL (SEE 34-9016)	1		
50	27-8074	BOLT	2		
51	20-0818A01	SUPPORT BRACKET	1		
52	33-0425	SPACER	4		
53	32-0814	REDUCER WASHER	2		

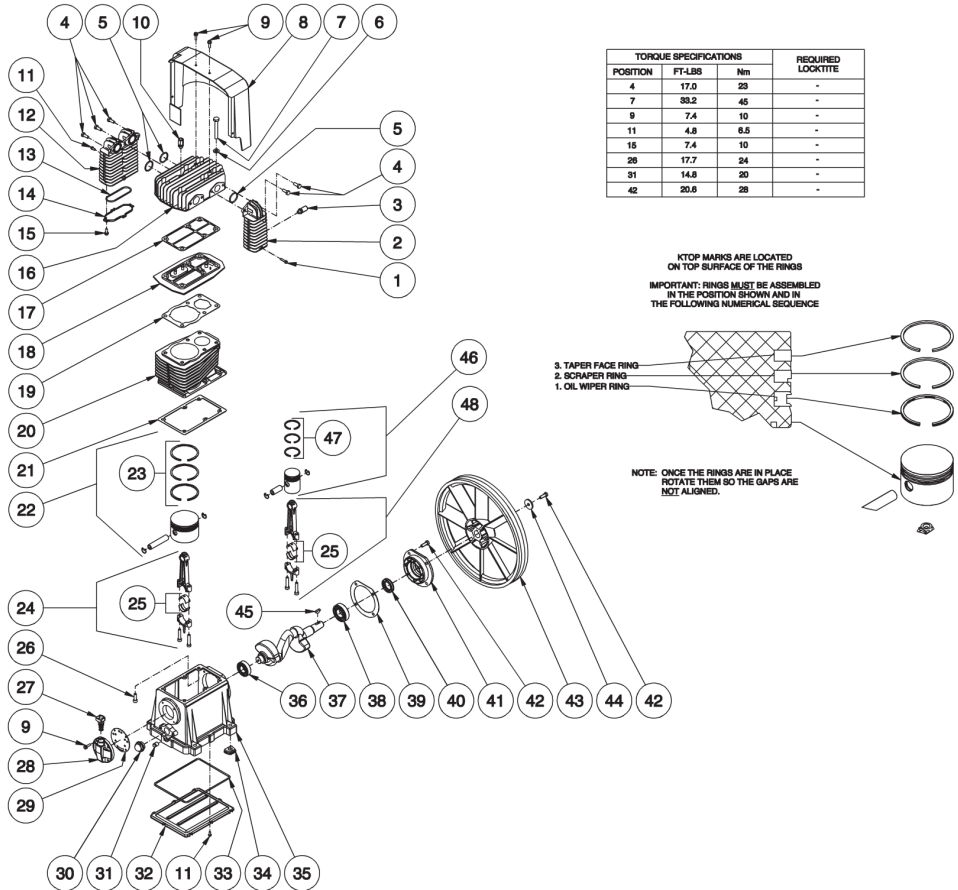
Id	Item #	Description	Quantity	Rev	Comments
54	43-0078	KEY	1		
55	32-0563	CONTACTOR	1		
56	27-9526	BOLT	2		
57	28-1009	LOCKWASHER	2		
58	30-6001	HEX NUT	2		
59	2-0101	MOTOR - 5.0 HP	1		
60	32-0292	LOCKNUT	1		
61	9-0046	CORD RELIEF	1		
62	32-0022	CORD *(TWO FEET REQUIRED)	1		
63	32-0012	PLUG	1		
64	27-0118	BOLT	4		
65	3-0174	COMPRESSOR PUMP	1		
66	24-0160	ADAPTER	1		
67	15-0188	HOSE	1		
68	24-0150	ADAPTER	1		
69	24-0010	NIPPLE	1		
70	24-0042	ELBOW	1		
71	22-0267	PRESSURE RELIEF VALVE	1		
72	23-0056	REDUCER	1		
73	22-0277	PRESSURE SWITCH	1		
74	24-0242	STREET TEE	1		
75	24-0174	NIPPLE	1		
76	39-0014	PLUG	1		
77	24-0082	PLUG	1		
78	24-0266	MANIFOLD	1		
79	24-0175	NIPPLE	1		
80	22-0271	PRESSURE GAUGE	2		
81	22-0231	ADJUSTABLE REGULATOR	1		
82	24-0009	PLUG	1		
83	23-0118	ELBOW	1		
	34-9016	SAFETY DECAL KIT (INC. 8-10, 39-40, 47, 49)			

*MUST ORDER IN ONE FOOT LENGTHS



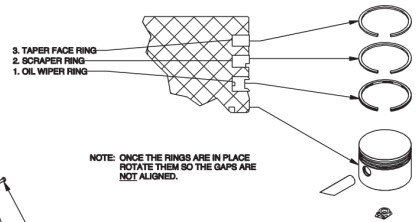
AC2-SE05-30M / AC2-SE05-30M (sn:20024615-99999999)

TWO STAGE COMPRESSOR



TORQUE SPECIFICATIONS			REQUIRED LOCKTITE
POSITION	FT-LBS	Nm	
4	17.0	23	-
7	33.2	45	-
9	7.4	10	-
11	4.8	6.5	-
15	7.4	10	-
28	17.7	24	-
31	14.8	20	-
42	20.6	28	-

KTOP MARKS ARE LOCATED ON TOP SURFACE OF THE RINGS
 IMPORTANT: RINGS MUST BE ASSEMBLED IN THE POSITION SHOWN AND IN THE FOLLOWING NUMERICAL SEQUENCE



Id	Item #	Description	Quantity	Rev	Comments
1	27-8807	BOLT	1		
2	46-1156	AFTER COOLER	1		
3	22-0385	SAFETY VALVE	1		
4	27-8032	BOLT	5		
5	25-0439	O-RING	3		
6	28-1021	WASHER	6		
7	27-8934	BOLT	6		
8	N/A	AIR SHROUD	1		
9	27-8002	BOLT	6		
10	22-0386	SAFETY VALVE	1		
11	27-9575	SCREW	9		

Id	Item #	Description	Quantity	Rev	Comments
12	46-1157	INTER COOLER	1		
13	25-0440	O-RING	1		
14	46-0816	INTER COOLER COVER	1		
15	27-8906	SCREW	4		
16	46-1158	PUMP HEAD	1		
17	N/A Sep.	HEAD GASKET (SEE 70-0240)	1		
18	22-0283	VALVE PLATE ASSEMBLY	1		
19	N/A Sep.	CYLINDER GASKET (SEE 70-0240)	1		
20	46-0817	CYLINDER	1		
21	N/A Sep.	CRANKCASE GASKET (SEE 70-0240)	1		
22	N/A	COMPLETE PISTON	1		
23	70-0238	RING SET KIT	1		
24	N/A	CONNECTING ROD	1		
25	N/A	CONNECTING ROD BEARING	2		
26	27-8194	SCREW	6		
27	46-0818	CRANKCASE FILL HOLE PLUG W/ O-RING	1		
28	46-0819	OIL FILL END CAP	1		
29	N/A Sep.	OIL FILL END CAP GASKET (SEE 70-0240)	1		
30	46-0820	OIL LEVEL SIGHT GLASS W/ O-RING	1		
31	39-0106	OIL DRAIN PLUG	1		
32	N/A	OIL PAN	1		
33	N/A Sep.	OIL PAN O-RING (SEE 70-0240)	1		
34	46-0821	ISOLATOR	4		
35	N/A	CRANKCASE	1		
36	48-0060	BALL BEARING	1		
37	N/A	PISTON CRANKSHAFT	1		
38	48-0024	BALL BEARING	1		
39	N/A Sep.	FRONT END CAP GASKET (SEE 70-0240)	1		
40	26-0208	CRANKSHAFT SEAL	1		
41	46-0822	FRONT END CAP	1		
42	27-8033	BOLT	5		
43	10-0130	FLYWHEEL	1		
44	28-1032	WASHER	1		
45	43-0102	KEY	1		
46	N/A	COMPLETE PISTON	1		
47	70-0239	RING SET KIT	1		
48	N/A	CONNECTING ROD	1		
KIT	70-0240	GASKET KIT (INC. 5, 13, 17, 19, 21, 29, 33, 39)			