

IMPORTANT: THIS IS DATED INFORMATION. Parts must be ordered from a dealer or distributor. **Hearth and Home Technologies does not sell directly to consumers.** Provide model number and serial number when requesting service parts from your dealer or distributor.

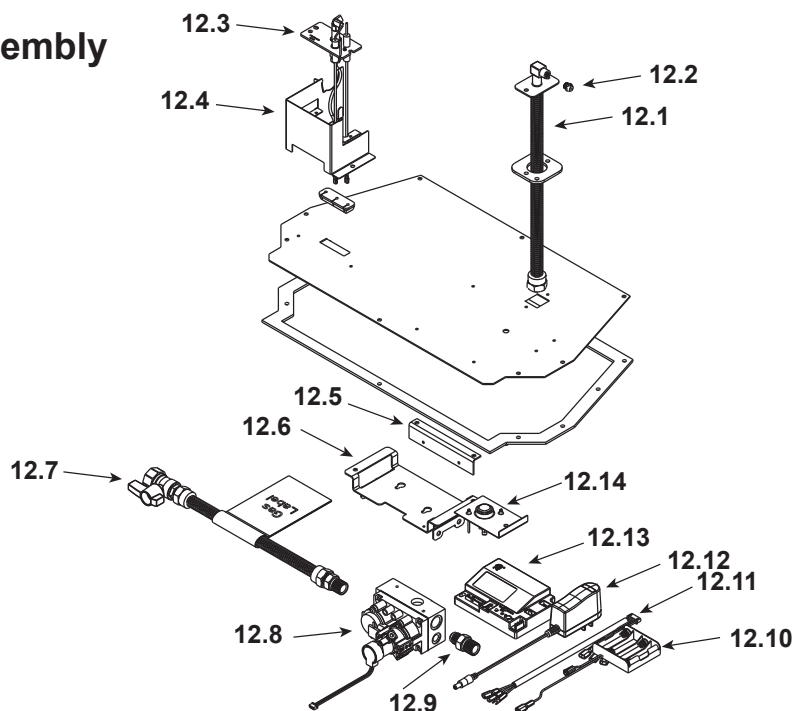


**Stocked
at Depot**

ITEM	DESCRIPTION	COMMENTS	PART NUMBER	
1	Termination Plate Assembly		2205-012	
	Flex Pipe Handle		438-351	
	Gasket		2206-401	
2	Burner Assembly		SRV2204-007-BK	Y
3	Burner Leg		2238-103	
4	Base Pan		2238-100	
5	On/Off Rheostat		2206-800	Y
6	Glass Door Assembly		GLA-2205	Y
7	Rheostat Knob		SRV100-512	Y
8	Control Panel		SRV2205-129-BK	
9	Blower		GFK-210-C	
10	Wire Assembly		2206-068	Y
11	Power cord Assembly		2201-017	Y

Additional service part numbers appear on following page.

#12 Valve Assembly



IMPORTANT: THIS IS DATED INFORMATION. Parts must be ordered from a dealer or distributor. **Hearth and Home Technologies does not sell directly to consumers.** Provide model number and serial number when requesting service parts from your dealer or distributor.



**Stocked
at Depot**

ITEM	DESCRIPTION	COMMENTS	PART NUMBER	
12.1	Flexible Gas Connector		SRV7000-156	Y
12.2	Orifice NG (#38C)		582-838	Y
	Orifice LP (#52C)		SRV582-852	Y
12.3	*Pilot Assembly NG		Call Tech Service with Serial number	
	*Pilot Assembly LP			
12.4	*Pilot Bracket	Call Tech Service with Serial number		
12.5	Control Panel Bracket		SRV2205-128	
12.6	Valve Bracket		SRV2205-146	
12.7	Flex Ball Valve Assembly		SRV302-320	Y
12.8	Valve NG		SRV2166-302	Y
	Valve LP		2166-303	Y
12.9	Brass Connector	Pkg of 5	303-315/5	Y
12.10	Battery Pack**		SRV2166-323	Y
12.11	Wire Assembly		2166-304	Y
12.12	Transformer		SRV2326-131	Y
12.13	Control Module		2166-347	Y
12.14	Temp Sensor Switch		SRV046-018A	Y

**Fuse for battery pack can be sourced locally, not a warranty item. Specs are 250v, 1A fuse, 3/4" long

*Call Tech Service with serial number for correct conversion and/or possible upgrade pilot kit

Additional service part numbers appear on following page.

No one builds a better fire

Beginning Manufacturing Date: June 2010

Ending Manufacturing Date: Aug 2011

IMPORTANT: THIS IS DATED INFORMATION. Parts must be ordered from a dealer or distributor. **Hearth and Home Technologies does not sell directly to consumers.** Provide model number and serial number when requesting service parts from your dealer or distributor.



Stocked at Depot

[illegible]

*Call Tech Service with serial number for correct conversion and/or possible upgrade pilot kit