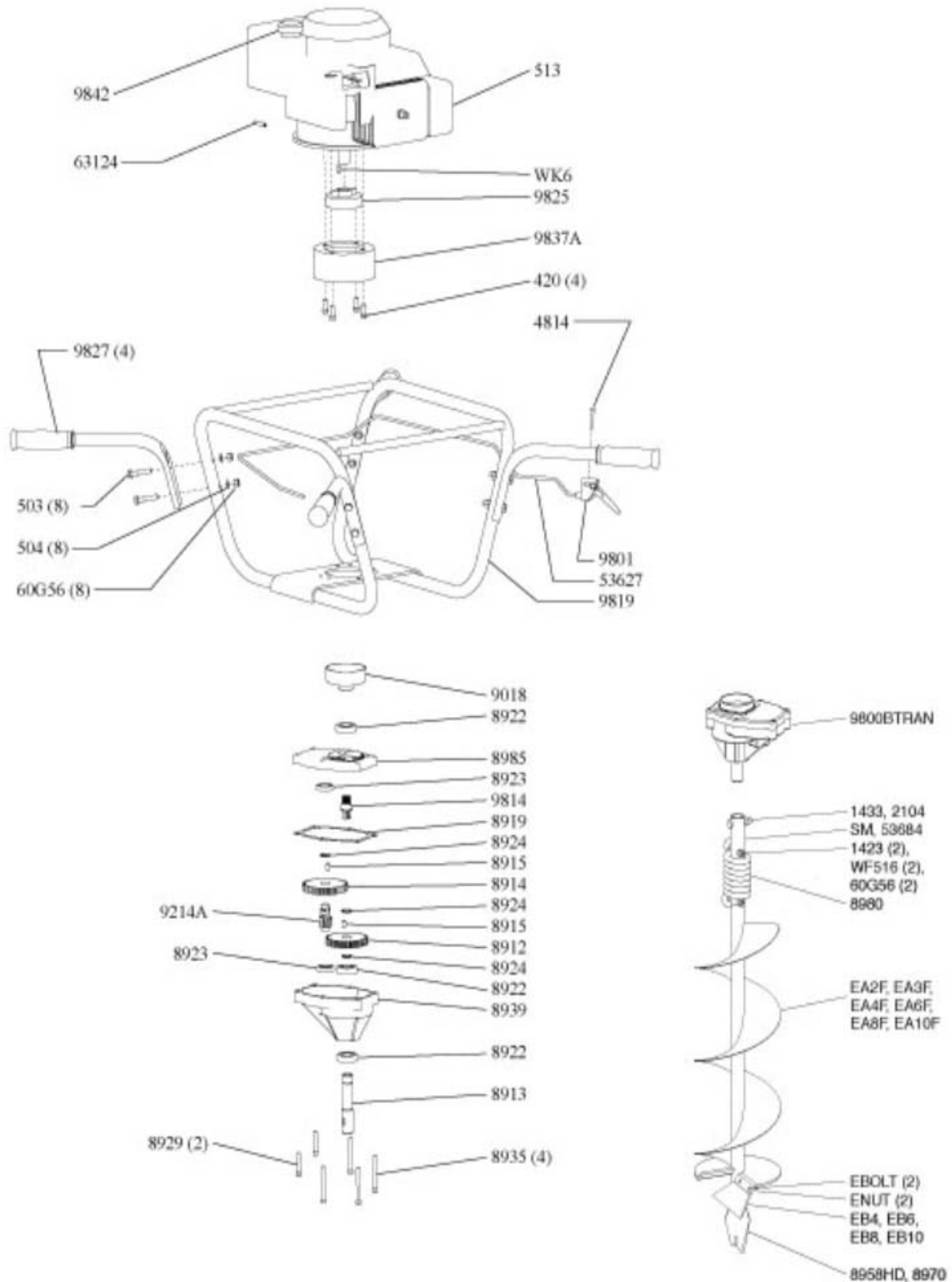


9800B™ EARTH AUGER POWERHEAD WITH BRIGGS & STRATTON® ENGINE (MODEL YEAR 2009)



Key No.	Part No.	Description
60G56	60G56	60G56 NUT 5/16-18 IN HLKBW GR5 ZN
420	420	420 BOLT 5/16-24 X 3/4IN 12PTF GR2 BLKZN F-T
503	503	503 BOLT 5/16-18 X 1-1/2 HH GR5 ZN F-T
504	504	504 WASHER 5/16X0.583X0.078 IN SPRLK ZN
513	513	513 ENGINE 675 SERIES QUANTUM
1423	1423	1423 BOLT 5/16-18X2 IN HHCS GR5 ZN P-T
1433	1433	1433 BOLT 3/8-16X1-1/2 IN HHCS GR5 ZN P-T
2104	2104	2104 NUT 3/8-16 IN HLKBW GR5 ZN
8914	8914	8914 GEAR 48T 14 T/IN 20° PA 3/4 ID HARD
8924	8924	8924 RING RETAINING EXTERNAL 3/4 INCH
8935	8935	8935 BOLT 1/4-20X2-1/2 IN SHCS GR5 BLK OX
8958HD	8958HD	8958HD FISHTAIL POINT 3/4-10 UNC RED
8970	8970	8970 POINT EARTH 2 INCH AND 3 INCH AUGERS
8980	8980	8980 SHOCK SPRING EARTH
8985	8985	8985 GEAR CASE UPPER HALF UNPAINTED
9018	9018	9018 CLUTCH DRUM 3 IN THREADED SHORT
9214A	9214A	9214A PINION 10T 14 T/IN 20° PA 3/4 OD
53627	53627	53627 CABLE THROTTLE 43.50 9800B
53684	53684	53684 SHOCK TOP 1-PC 11/05
63124	63124	63124 SPRING EXTENSION FOR 9800 THROTTLE

Key No.	Part No.	Description
EA2F	EA2F	EA2F EARTH AUGER 2 INCH REPL FT RH RED
EA3F	EA3F	EA3F EARTH AUGER 3 INCH REPL FT RH RED
EA4F	EA4F	EA4F EARTH AUGER 4 INCH REPL FT RH RED
EA6F	EA6F	EA6F EARTH AUGER 6 INCH REPL FT RH RED
EA8F	EA8F	EA8F EARTH AUGER 8 INCH REPL FT RH RED
EA10F	EA10F	EA10F EARTH AUGER 10 INCH REPL FT RH RED
EB4	EB4	EB4 EARTH BLADE 4 IN W/HARDWARE
EB6	EB6	EB6 EARTH BLADE 6 IN W/HARDWARE
EB6HD	EB6HD	EB6HD EARTH BLADE 6 IN HEAVY DUTY W/HARDWARE
EB8	EB8	EB8 EARTH BLADE 8 IN W/HARDWARE
EB8HD	EB8HD	EB8HD EARTH BLADE 8 IN HEAVY DUTY W/HARDWARE
EB10	EB10	EB10 EARTH BLADE 10 IN WITH HARDWARE
EB10HD	EB10HD	EB10HD EARTH BLADE 10 IN HEAVY DUTY W/HARDWARE
EBOLT	EBOLT	EBOLT BOLT 1/4-28X5/8 IN HH GR5 ZN F-T
ENUT	ENUT	ENUT NUT 1/4-28X7/32 IN HBW GR5 ZN
EXT6	EXT6	EXT6 EXTENSION 6 IN LONG 7/8 IN CONNECTION
SM	SM	SM SHOCK MECHANISM 7/8IN BORE
WF516	WF516	WF516 WASHER 5/16X7/8X5/64 IN GR8 ZN