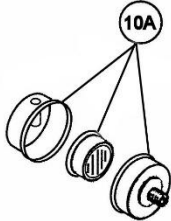
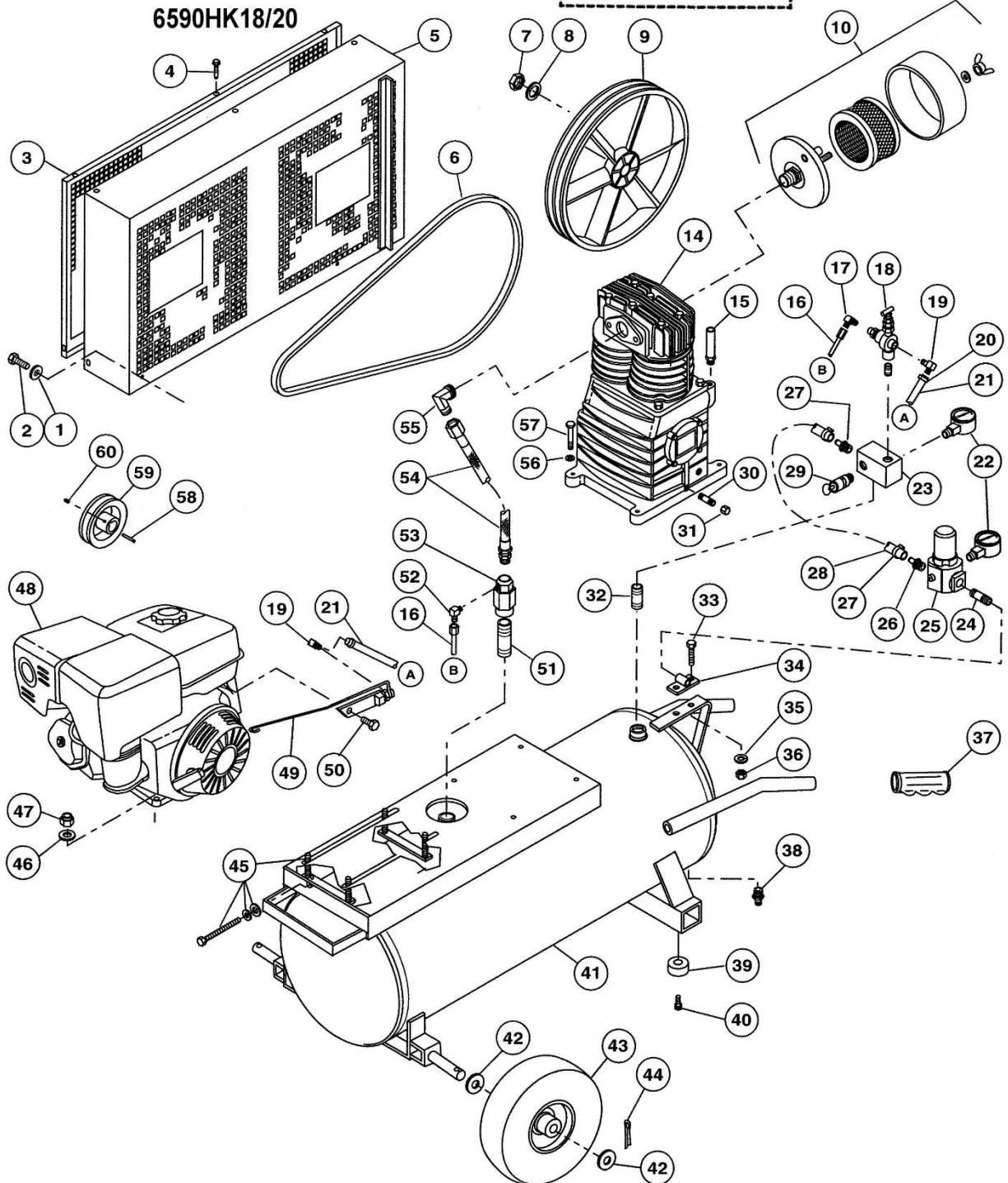


ROLAIR[®]
 SCHEMATIC FOR MODELS
 4090HK17/20
 6590HK18/20

Production starting 10/18






ROLAIR®

S Y S T E M S
PARTS LIST FOR MODELS
4090HK17/20
6590HK18/20

Schem #	Description	Part #	Qty.	Schem #	Description	Part #	Qty.
1	Washer	MIS10108	2	29	Safety Relief Valve	SRV0250A165	1
2	Bolt	MIS10023	2	30	Nipple	BLNP0250X1500	1
3	Belt-Guard Cover	NLA	1	31	Cap	BLCA0250	1
4	Bolt	MIS10094	5	32	Nipple	BLNP0500X1500	1
5	Belt-Guard (Base & Cover)	BG9140ASY	1	33	Bolt	MIS10022	2
6	Belt	BT4L510/A49	1	34	Accessory Bracket	210	1
7	Nut	37400720CH	1	35	Lock Washer	MIS10099	2
8	Washer	37500730CH	1	36	Nut	MIS10020	2
9	Flywheel	31007280CH	1	37	Handle Grip	328	2
10	Intake Filter Assembly (before 10/18)	FS14050	1	38	Drain Valve	132B	1
	Filter Element for FS14050	431	1	39	Rubber Foot	219	2
10A	Intake Filter Assembly (after 10/18)	FS10052	1	40	Screw	MIS10008	4
	Filter Element for FS10052	433	1	41	20 Gallon Tank Assembly-ASME	TNKASY4090K17/20	1
14	Twin-Cylinder Pump w/Flywheel - Mdl 4090HK17/20	PMP12K17CH	1	42	Washer	MIS10104	4
	Twin-Cylinder Pump less Flywheel-Mdl 4090HK17/20	PMP12K17CHLF	1	43	Foam-Filled Flat-Free Tire	WLS50	2
	Twin-Cylinder Pump w/Flywheel-Mdl 6590HK18/20	PMP12K18CH	1	44	Cotter Pin	181B	2
	Twin-Cylinder Pump less Flywheel-Mdl 6590HK18/20	PMP12K18CHLF	1	45	Belt Tightener/Mounting Kit	SBT5HP-ANGLE*	1
				46	Washer	MIS10102	4
15	3/8" Breather/Oil Fill Plug	36507050CH	1	47	Lock Nut	MIS10020B	4
16	1/4" Copper Tubing - 24"	CTUBE14	2'	48	Honda Engine-Model 4090HK17/20	ENG05H01	1
	Brass Nut	BRNT0250	2		Honda Engine-Model 6590HK18/20	ENG06H01	1
	Brass Ring	BRRG0250	2		Optional Engine Drain Extension for Above	HDE5	1
17	Brass Elbow	BREL0250X025039	1	49	Throttle Control Kit	192EGX160K1QX	1
18	Pilot Unloader Valve	131BIG	1	50	Flange Bolt	HON90013-883-000	1
19	Brass Elbow	BREL0250X0125H16	2	51	Nipple	BLNP0500X1500	1
20	Hose Clamp	177	2	52	Brass Elbow	BREL0250X0125H16	1
21	1/4" Rubber Hose - 24"	178	2'	53	Check Valve	CV4X4L1	1
22	Gauge	GA2050200GC	2	54	Braided Discharge Tube	FDT12	1
23	Aluminum Block Manifold	154	1	55	Brass Elbow	145D	1
24	Nipple	BLNP0375X1500	1	56	Lock Washer	MIS10099	4
25	Regulator	REG0375	1	57	Bolt	MIS10023	4
26	Brass Coupler	BRCP0375X0375H12	2	58	Keystock	MIS10095C	1
27	Hose Clamp	177A	2	59	Pulley	PUAK44X0750	1
28	3/8" Rubber Hose - 16"	178A	1.25'		6590HK18/20 only (After S/N 12010001)	PUAK49X0750	1
				60	Setscrew	MIS10020C	1

*For units built prior to February 2005, order SBT5HP-SQUARE.