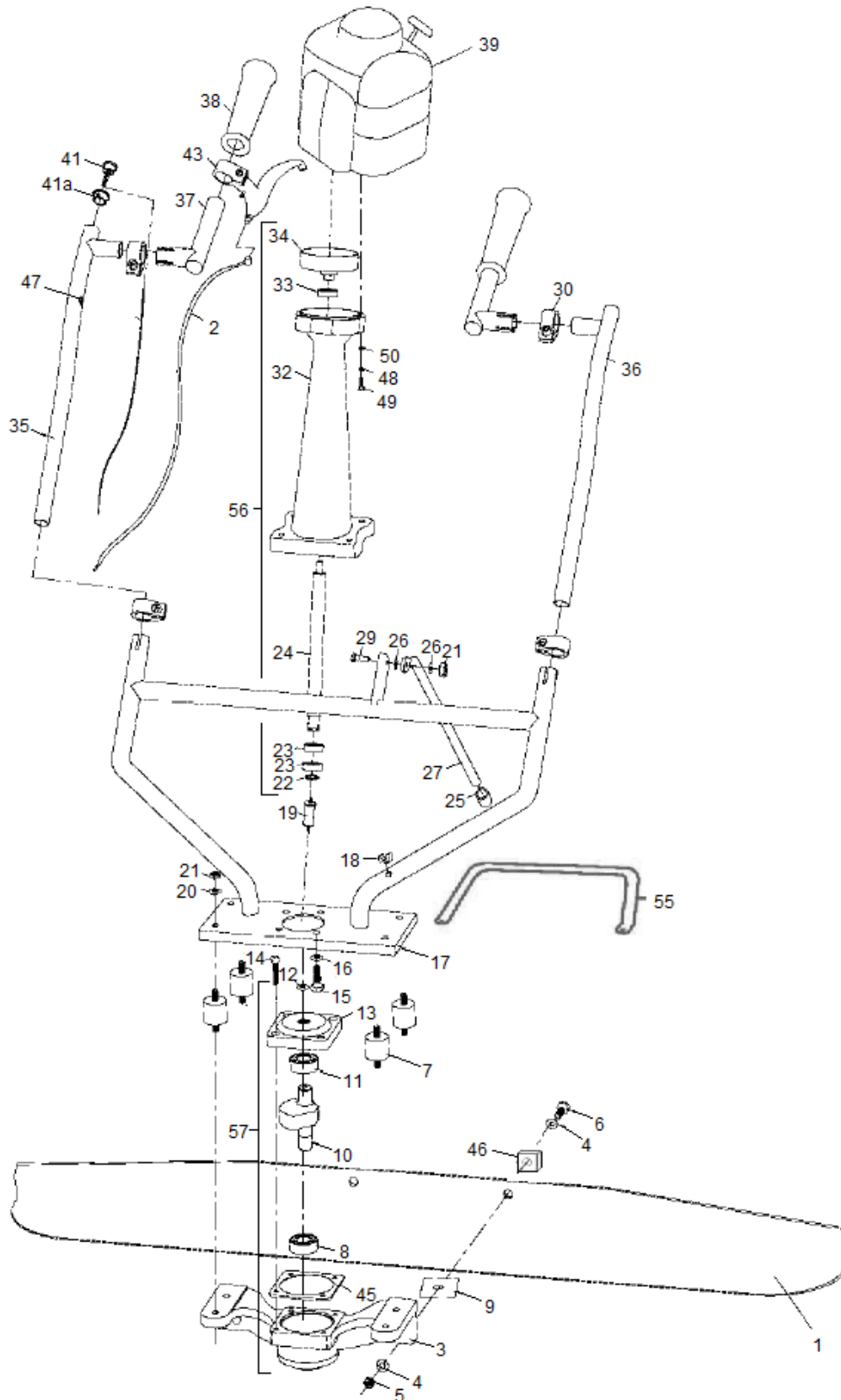


**ASSEMBLY DRAWING**



## PARTS LIST

Item #	Part #	Description	QTY	Remarks
1	22905	SCREED BLADE, 4 FT (SHOWN)	1	
	22904	SCREED BLADE, 6 FT		
	22903	SCREED BLADE, 8 FT		
	22902	SCREED BLADE, 10 FT		
	22901	SCREED BLADE, 12 FT		
	22906	SCREED BLADE, 14 FT		
	22907	SCREED BLADE, 16 FT		
2	11914	THROTTLE CABLE	1	
3	23001	VIBRATION BASE	1	
4	10993	FLAT WASHER, M12	4	
5	14268	LOCK NUT, M12-1.25.	2	
6	10992	HEX HEAD BOLT, M12-1.25x60MM LG.	2	
7	11049	VIBRATION ISOLATION MOUNT	4	
8	12464	BEARING, 62203-2RS1, LOWER BASE	1	
9	10995	PLASTIC VIBRATION STRIP	2	
10	23005	SHAFT W/ COUNTERWEIGHT	1	
11	12449	BEARING, 5202-2RS, UPPER BASE	1	
12	23046	OIL SEAL, SHAFT, 15 X 30 X 7	1	
13	23006	FLANGE, UPPER CONNECTOR	1	
14	11028	HEX SOCKET CAP SCREW, M6 X 30MM LG,	4	
15	10997	HEX HEAD BOLT, M8-1.25 X 20MM LG	4	
16	10998	LOCK WASHER, M8	4	
17	23002	BASE UNIT HANDLE, CHROME PLATED	1	
18	11053	RUBBER CLIP, KICKSTAND	1	
19	23019	VIBRATION ISOLATION SHAFT	1	
20	11000	FLAT WASHER, M8	8	
21	11054	LOCK NUT, M8	9	
22	11059	RETAINING RING, EXTERNAL SHAFT	1	
23	12466	BEARING, 6201-ZZ, LOWER DRIVE SHAFT	2	
24	23003	DRIVE SHAFT	1	
25	11060	RUBBER CAP, KICKSTAND	1	
26	11055	PLASTIC WASHER, KICKSTAND	2	
27	23004	KICK STAND, CHROME PLATED	1	
29	10999	HEX HEAD BOLT, M8 X 20MM LG	1	
30	11058	HANDLE CLAMP	4	
32	23000	HOUSING, SHAFT	1	
33	12467	BEARING, 6201-LLU, UPPER DRIVE SHAFT	1	
34	11061	CLUTCH DRUM	1	
35	11792	HANDLE SECTION, RIGHT, PUSHBUTTON TYPE	1	
36	23008	HANDLE SECTION, LEFT	1	
37	23009	HANDLE GRIP SECTION	2	

38	11056	HAND GRIPS, HANDLE, PAIR	1	
<b>Continued on Next Page</b>				
39	21365	ENGINE, HONDA GX35, 1.3 HP, 7000 RPM	1	
41	651035	ON/OFF SWITCH	1	
41a	23155	COLLAR, SWITCH	1	
43	11064	THROTTLE HANDLE	2	
45	23013	GASKET	1	
46	23150	SQUARE BUSHING, ALUMINUM	1	
47	23153	GROMMET	2	
48	14448	LOCK WASHER, M6	2	
49	11495	HEX SOCKET CAP SCREW, M6-1.0 X 40MM LG	4	
50	14447	FLAT WASHER, M6	4	
55	23151	CARRY HANDLE	1	
56	23030	SHAFT HOUSING ASSEMBLY (ITEMS 22, 23, 24, 32, 33, 34)	1	
57	23031	EXCITER ASSEMBLY (ITEMS 3, 8, 10, 11, 13, 12, 14, 45)	1	