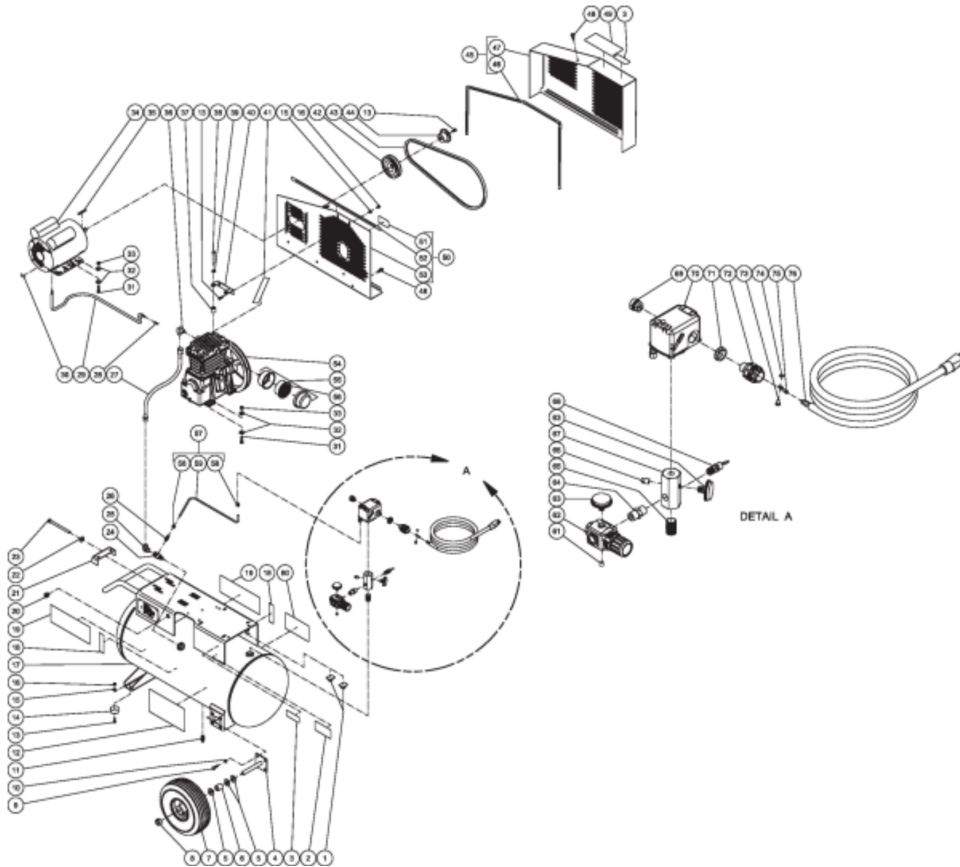




AC1-PE15-20M / AC1-PE15-20M (sn:20035391-99999999)

TANK ASSEMBLY



Id	Item #	Description	Quantity
1	33-0264	WIRE CLIP	2
2	N/A	DECAL- DATA PLATE	1
3	N/A Sep.	DECAL- WARNING: HOT SURFACE (SEE 34-9016)	1
4	20-0670A01	AXLE STUB BRACKET	2
5	28-0008	WASHER	6
6	62-0188	AXLE SPACER	2
7	14-0017	WHEEL	2
8	33-0351	COLLAR / SHAFT	2
9	27-0067	BOLT	9
10	29-0007	LOCKWASHER	8
11	23-0312	PETCOCK	1

Id	Item #	Description	Quantity
12	N/A Sep.	DECAL- DANGER/WARNING/CAUTION (SEE 34-9016)	1
13	27-0015	SCREW	6
14	14-0069	ISOLATOR	2
15	28-0002	WASHER	4
16	30-0155	LOCKNUT	4
17	N/A	AIR TANK ASSEMBLY	1
18	N/A Sep.	DECAL- DRAIN TANK (SEE 34-9016)	2
19	34-0828	DECAL- MI-T-M AIR COMPRESSORS	2
20	32-0465	BUSHING	1
21	20-0614A01	BELT TENSIONER PLATE	1
22	28-0023	FLATWASHER	1
23	27-0133	BOLT	1
24	22-0334	CHECK VALVE	1
25	24-0042	ELBOW	1
26	23-0328	ADAPTER	1
27	15-0236	HOSE	1
28	32-0003	TERMINAL	6
29	32-0445	CORD *(THREE FEET REQUIRED)	1
30	N/A Sep.	DECAL- 115 VOLT (SEE 34-9016)	1
31	27-0068	BOLT	8
32	28-0022	WASHER	16
33	30-0157	LOCKNUT	8
34	2-0118	ENGINE- 2.0 HP	1
35	43-0073	KEY	1
36	23-0426	ELBOW	1
37	33-0358	SPACER	2
38	27-0072	SCREW	2
39	28-0003	WASHER	2
40	20-0574A01	SUPPORT BRACKET	1
41	N/A Sep.	DECAL- CHECK OIL TAPE (SEE 34-9016)	1
42	10-0099	SHEAVE	1
43	11-0011	DRIVE BELT	1
44	9-0037	BUSHING	1
45	854-0095	BELTGUARD ASSEMBLY (INC. 46-47)	1
46	33-0020	EDGING *(FOUR FEET REQUIRED)	1
47	N/A Sep.	BELTGUARD COVER (SEE 854-0095)	1
48	27-9524	BOLT	3
49	N/A Sep.	DECAL- OPERATING INSTRUCTIONS (SEE 34-9016)	1
50	854-0094	BELTGUARD BACK ASSEMBLY (INC. 51-53)	1

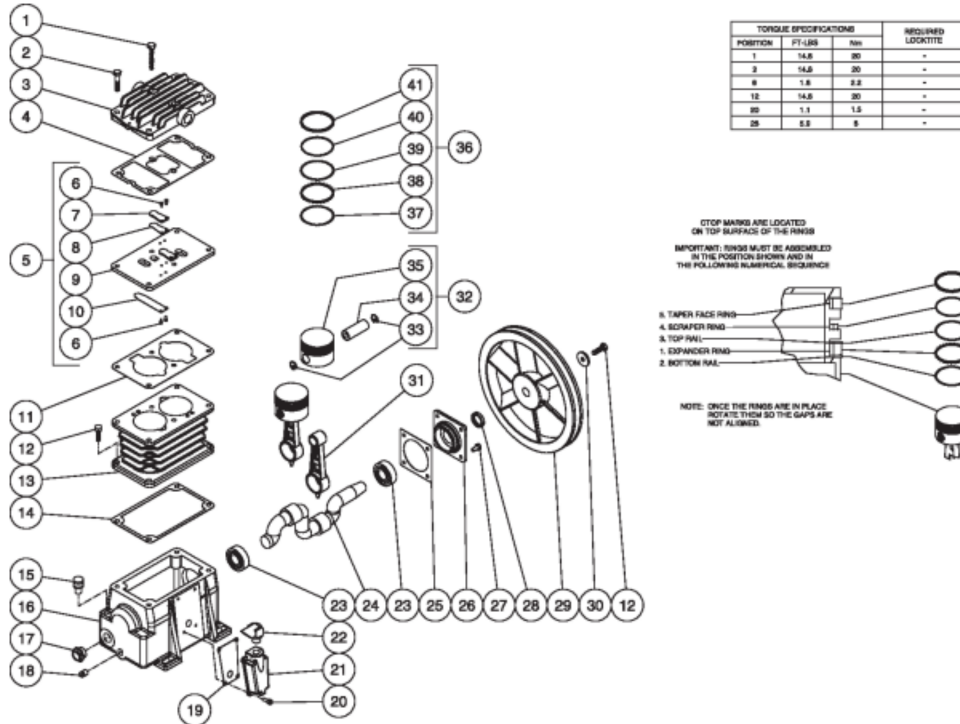
Id	Item #	Description	Quantity
51	N/A Sep.	DECAL- WARNING: BELTGUARD IN PLACE (SEE 34-9016)	1
52	33-0020	EDGING *(TWO FEET REQUIRED)	1
53	N/A Sep.	BELTGUARD BACK (SEE 854-0094)	1
54	3-0215	PUMP	1
55	19-0083	AIR FILTER ASSEMBLY (INC. 56)	1
56	19-0082	FILTER REPLACEMENT	1
57	854-0057	TUBE ASSEMBLY (INC. 58-59)	1
58	23-0315	COMPRESSION NUT	2
59	54-0034	TUBE *(TWO FEET REQUIRED)	1
60	N/A Sep.	DECAL- MAINTENANCE INSTRUCTIONS (SEE 34-9016)	1
61	24-0082	REGULATOR PLUG	1
62	22-0231	ADJUSTABLE REGULATOR	1
63	22-0271	PRESSURE GAUGE	2
64	24-0010	NIPPLE	1
65	24-0174	NIPPLE	1
66	24-0082	PLUG	1
67	24-0264	MANIFOLD	1
68	22-0228	SAFETY VALVE	1
69	9-0045	BUSHING	1
70	22-0232	PRESSURE SWITCH	1
71	32-0108	LOCKNUT	1
72	32-0766	CORD STRAIN RELIEF	1
73	27-8933	SCREW	1
74	28-1009	LOCKWASHER	3
75	32-0099	TERMINAL	3
76	32-0754	CORD PLUG SET	1
	34-9016	SAFETY DECAL KIT (INC. 3, 12, 18-19, 30, 41, 49, 51, 60)	1

*MUST ORDER IN ONE FOOT LENGTHS



AC1-PE15-20M / AC1-PE15-20M (sn:20035391-99999999)

PUMP



Id	Item #	Description	Quantity
1	27-0071	SCREW	2
2	27-0069	SCREW	4
3	46-1199	CYLINDER HEAD	1
4	N/A Sep.	HEAD GASKET (SEE 70-0326)	1
5	46-0952	VALVE PLATE ASSEMBLY (INC. 6-10)	2
6	N/A Sep.	VALVE SCREW (SEE 70-0327)	8
7	N/A Sep.	VALVE STOP (SEE 70-0327)	2
8	N/A Sep.	OUTLET REED VALVE (SEE 70-0327)	2
9	N/A	VALVE PLATE	1
10	N/A Sep.	INLET REED VALVE (SEE 70-0327)	2
11	N/A Sep.	CYLINDER VALVE PLATE GASKET (SEE 70-0326)	1
12	27-0067	SCREW	5
13	46-0953	CYLINDER	1
14	N/A Sep.	CYLINDER TO CRANKCASE GASKET (SEE 70-0326)	1

Id	Item #	Description	Quantity
15	46-1144	OIL FILL PLUG	1
16	46-1194	CRANKCASE	1
17	46-1145	OIL SIGHT GLASS	1
18	24-0082	PLUG	1
19	26-0292	GASKET	1
20	27-8885	BOLT	4
21	46-1195	COVER	1
22	46-1196	ELBOW	1
23	48-0016	BEAR BALL	2
24	46-0955	CRANKSHAFT	1
25	N/A Sep.	FLANGE GASKET (SEE 70-0326)	1
26	46-0957	FLANGE	1
27	27-0014	SCREW	4
28	26-0246	SHAFT OIL SEAL	1
29	10-0115	FLYWHEEL	1
30	N/A Sep.	WASHER W/CRANKSHAFT (SEE 46-0955)	1
31	46-0958	CONNECTING ROD	2
32	70-0329	PISTON KIT (INC. 33-35)	2
33	N/A Sep.	SNAP RING (SEE 70-0329)	4
34	N/A Sep.	WRIST PIN (SEE 70-0329)	2
35	N/A Sep.	PISTON (SEE 70-0329)	2
36	70-0328	PISTON SEALS KIT (INC. 37-41)	2
37	N/A Sep.	BOTTOM RAIL (SEE 70-0328)	2
38	N/A Sep.	EXPANDER RING (SEE 70-0328)	2
39	N/A Sep.	TOP RAIL (SEE 70-0328)	2
40	N/A Sep.	SCRAPER PISTON RING (SEE 70-0328)	2
41	N/A Sep.	TAPER FACE PISTON RING (SEE 70-0328)	2
KIT	70-0326	GASKET KIT (INC. 4, 11, 14, 25)	
KIT	70-0327	VALVE PLATE KIT (INC. 6-8, 10)	
KIT	70-0328	PISTON SEALS KIT (INC. 37-41)	
KIT	70-0329	PISTON KIT (INC. 33-35)	