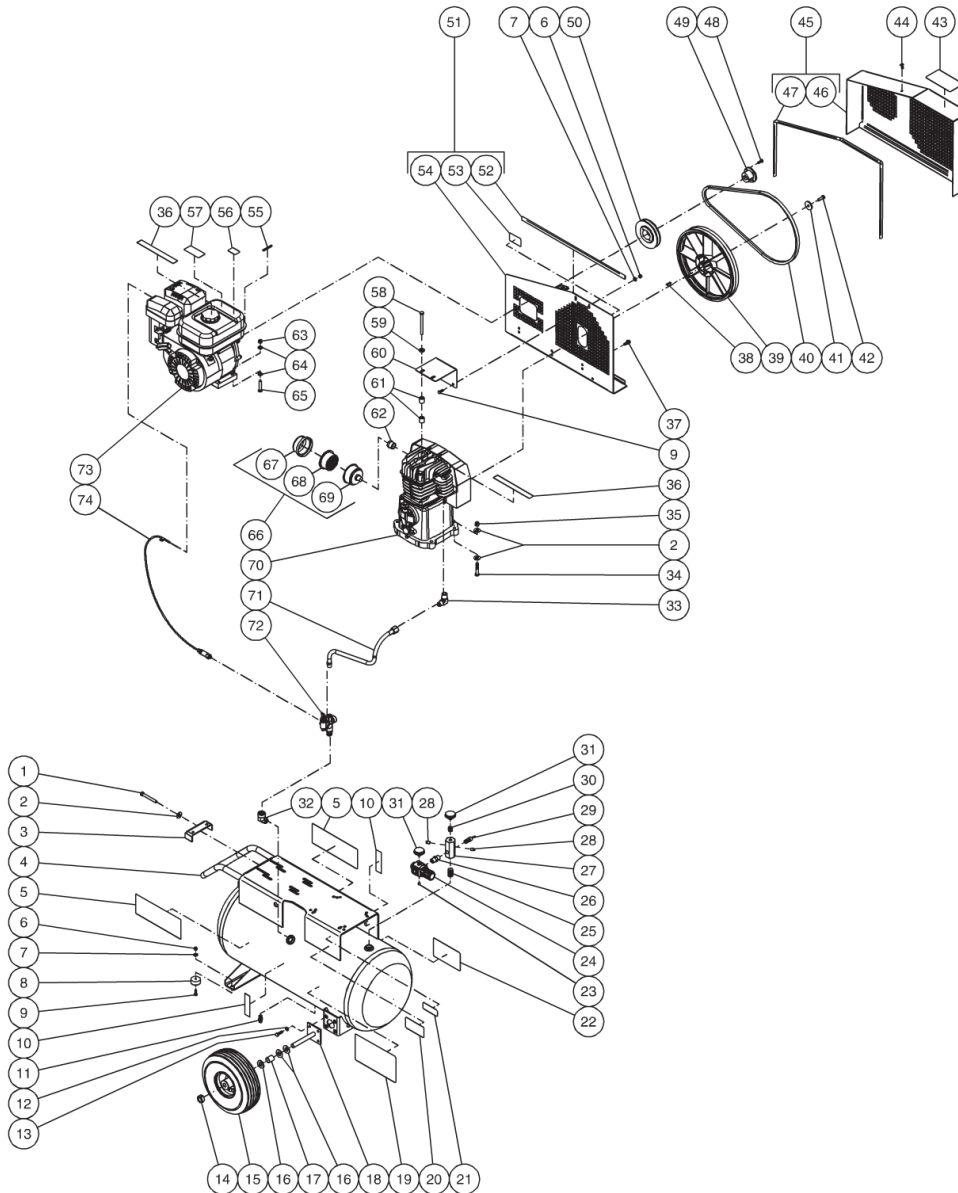




AC1-PR07-20M / AC1-PR07-20M (sn:20025555-99999999)

## TANK ASSEMBLY



Id	Item #	Description	Quantity	Rev	Comments
1	27-0576	BOLT	1		
2	28-0023	WASHER	9		
3	20-0614A01	BELT TENSIONER PLATE	1		
4	N/A	AIR TANK ASSEMBLY	1		
5	34-0828	DECAL- MI-T-M	1		

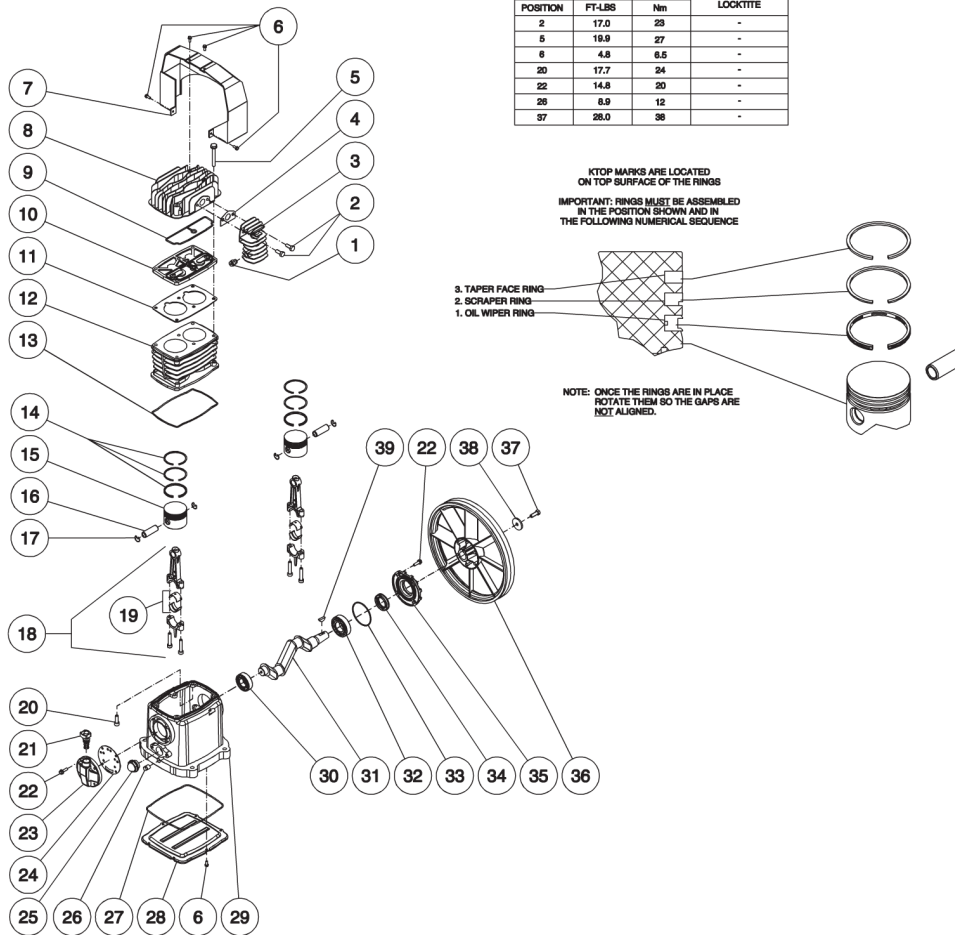
<b>Id</b>	<b>Item #</b>	<b>Description</b>	<b>Quantity</b>	<b>Rev</b>	<b>Comments</b>
6	30-0155	LOCKNUT	4		
7	28-0002	WASHER	4		
8	14-0069	ISOLATOR	2		
9	27-0015	BOLT	6		
10	N/A Sep.	DECAL- DRAIN TANK (SEE 34-9016)	2		
11	23-0312	DRAIN VALVE	2		
12	29-0007	LOCKWASHER	8		
13	27-0067	BOLT	8		
14	33-0351	COLLAR / SHAFT	2		
15	14-0017	WHEEL	1		
16	28-0008	WASHER	8		
17	20-0313A01	AXLE	2		
18	20-0670A01	AXLE BRACKET	2		
19	N/A Sep.	DECAL- DANGER/WARNING/CAUTION (SEE 34-9016)	1		
20	N/A	DECAL-DATA PLATE	1		
21	N/A Sep.	DECAL- WARNING: HOT SURFACE (SEE 34-9016)	1		
22	N/A SEP.	DECAL-MAINTENANCE INSTRUCTIONS (SEE 34-9016)	1		
23	N/A	PLUG W/ REGULATOR	1		
24	22-0231	ADJUSTABLE REGUALATOR	1		
25	24-0174	NIPPLE	1		
26	24-0010	NIPPLE	1		
27	24-0264	MANIFOLD BLOCK	1		
28	24-0082	PLUG	2		
29	22-0228	SAFETY VALVE	1		
30	23-0111	REDUCER	1		
31	22-0257	PRESSURE GAUGE	2		
32	24-0041	ELBOW	1		
33	24-0074	ELBOW	1		
34	27-0121	BOLT	4		
35	30-0159	LOCKNUT	4		
36	N/A Sep.	DECAL- CHECK OIL TAPE (SEE 34-9016)	2		
37	27-9524	BOLT	3		
38	43-0102	KEY W/COMPRESSOR	1		
39	10-0131	FLYWHEEL W/COMPRESSOR	1		
40	11-0040	DRIVE BELT	1		
41	28-1032	WASHER W/COMPRESSOR	1		
42	27-8033	BOLT W/COMPRESSOR	1		
43	N/A Sep.	DECAL- OPERATING INSTRUCTIONS/GAS (SEE 34-9016)	1		
44	33-0197	FASTENER	1		

Id	Item #	Description	Quantity	Rev	Comments
45	854-0009	BELTGUARD ASSEMBLY (INCLUDES 46-47)	1		
46	N/A Sep.	BELTGUARD COVER (SEE 854-0009)	1		
47	33-0020	EDGING *(FOUR FEET REQUIRED)	1		
48	27-0015	BOLT	2		
49	9-0009	BUSHING	1		
50	10-0105	SHEAVE	1		
51	854-0007	BELTGUARD BACK ASSEMBLY (INCLUDES 52-54)	1		
52	33-0020	EDGING *(TWO FEET REQUIRED)	1		
53	N/A Sep.	DECAL- WARNING:BELTGUARD IN PLACE (SEE 34-9016)	1		
54	N/A Sep.	BELTGUARD BACK (SEE 854-0007)	1		
55	43-0073	KEY	1		
56	N/A Sep.	DECAL- CAUTION: ALLOW TO COOL (SEE 34-9016)	1		
57	N/A Sep.	DECAL- WARNING: MUFFLER HOT (SEE 34-9016)	1		
58	27-8044	BOLT	2		
59	28-0022	WASHER	2		
60	20-0740A01	SUPPORT BRACKET	1		
61	33-0358	SPACER	4		
62	23-0023	BUSHING	1		
63	30-0157	LOCKNUT	4		
64	28-0003	WASHER	8		
65	27-0070	BOLT	4		
66	19-0083	AIR FILTER ASSEMBLY (INC. 67-69)	1		
67	19-0084	FRONT FILTER HOUSING	1		
68	19-0082	FILTER REPLACEMENT	1		
69	N/A Sep.	REAR FILTER HOUSING (SEE 19-0083)	1		
70	3-0175	COMPRESSOR W/FLYWHEEL	1		
71	15-0245	HOSE	1		
72	22-0346	PILOT VALVE	1		
73	1-0133	ENGINE - 7.0 HP SUBARU	1		
74	33-0401	BULL WHIP W/THROTTLE CONTROL	1		
	34-9016	SAFETY DECAL KIT (INC. 10, 19, 21-22, 36, 43, 53, 56-57)			
		*MUST ORDER IN ONE FOOT LENGTHS			



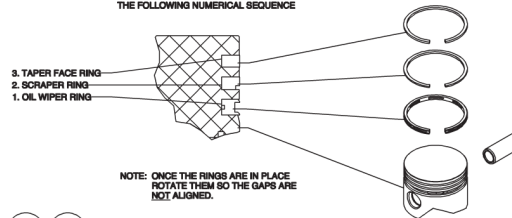
AC1-PR07-20M / AC1-PR07-20M (sn:20025555-99999999)

# PUMP



TORQUE SPECIFICATIONS			REQUIRED LOCKTITE
POSITION	FT-LBS	Nm	
2	17.0	23	-
5	19.9	27	-
6	4.8	6.5	-
20	17.7	24	-
22	14.8	20	-
26	8.9	12	-
37	28.0	38	-

KTOP MARKS ARE LOCATED  
ON TOP SURFACE OF THE RINGS  
IMPORTANT: RINGS MUST BE ASSEMBLED  
IN THE POSITION SHOWN AND IN  
THE FOLLOWING NUMERICAL SEQUENCE



Id	Item #	Description	Quantity	Rev	Comments
1	22-0253	EASY START VALVE	1		
2	27-8032	SCREW	2		
3	46-1171	AFTER COOLER	1		
4	N/A Sep.	AFTER COOLER GASKET (SEE 70-0393)	1		
5	27-9577	SCREW	6		
6	27-9575	SCREW	10		
7	46-1197	AIR SHROUD	1		
8	46-1172	HEAD	1		
9	N/A Sep.	HEAD GASKET (SEE 70-0393)	1		
10	22-0388	HOLDER PLATE VALVE	1		

Id	Item #	Description	Quantity	Rev	Comments
11	N/A Sep.	CYLINDER GASKET (SEE 70-0393)	1		
12	46-1170	CYLINDER	1		
13	N/A Sep.	CRANKCASE GASKET (SEE 70-0393)	1		
14	70-0392	RING SET - 65 MM	2		
14	70-0268	RING SET - 65.4 MM	2		
15	N/A	PISTON	2		
16	N/A	WRIST PIN	2		
17	N/A	SNAP RING	2		
18	N/A	CONNECTING ROD	2		
19	N/A	CONNECTING ROD BEARING	2		
20	27-8194	SCREW	4		
21	46-0818	CRANKCASE FILL PLUG W/ O-RING	1		
22	27-8002	BOLT	8		
23	46-0819	OIL FILL END CAP	1		
24	N/A Sep.	OIL FILL END CAP GASKET (SEE 70-0393)	1		
25	46-0820	SIGHT GLASS	1		
26	39-0106	OIL DRAIN PLUG	1		
27	N/A Sep.	OIL PAN O-RING (SEE 70-0393)	1		
28	N/A	OIL PAN	1		
29	N/A	CRANKCASE	1		
30	48-0060	BALL BEARING	1		
31	N/A	PISTON CRANKSHAFT	1		
32	48-0024	BALL BEARING	1		
33	N/A Sep.	END CAP GASKET (SEE 70-0393)	1		
34	26-0208	CRANKSHAFT SEAL	1		
35	46-1169	FRONT END CAP	1		
36	10-0131	FLYWHEEL	1		
37	27-8033	BOLT	1		
38	28-1032	WASHER	1		
39	43-0102	WOODRUFF KEY	1		
KIT	70-0393	GASKET KIT (INC. 4, 9, 11, 13, 24, 27, 33)			