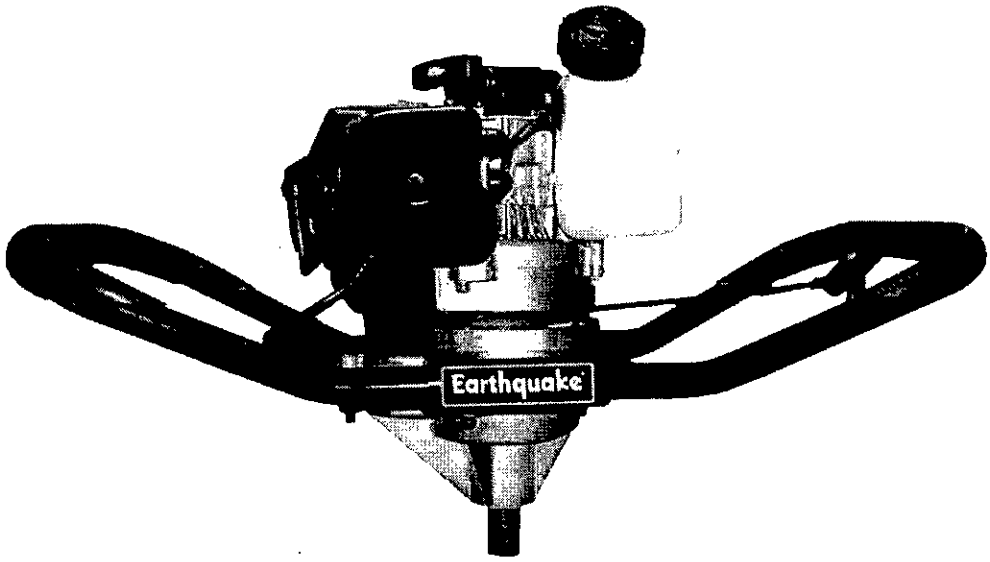


# Earthquake®

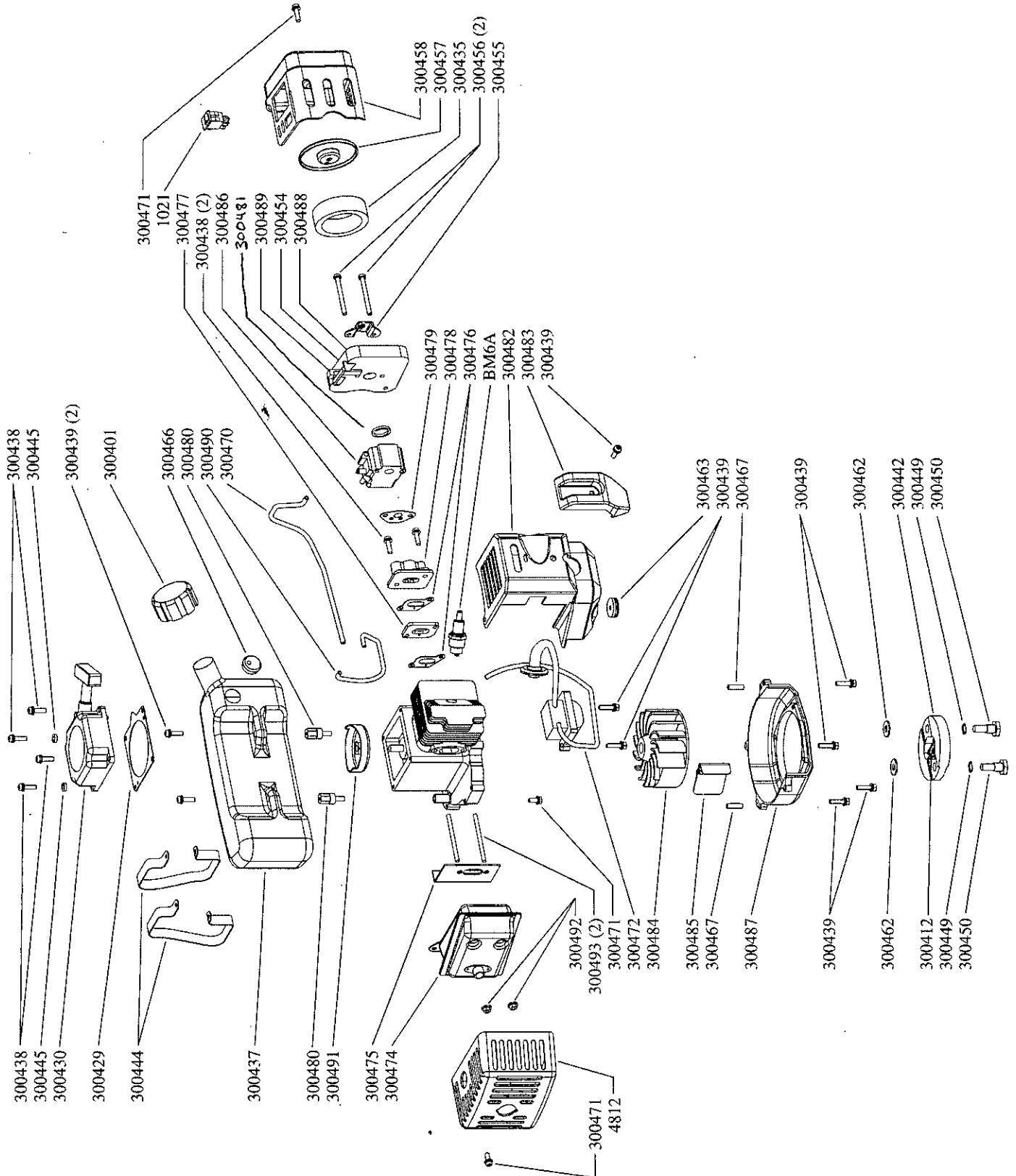
## E43 Power Earth Auger



## Operator's Manual

IBE43  
2/8/05

© Copyright 2005 Ardisam, Inc.  
All Rights Reserved. Printed in USA.





# E43 ENGINE PARTS LIST

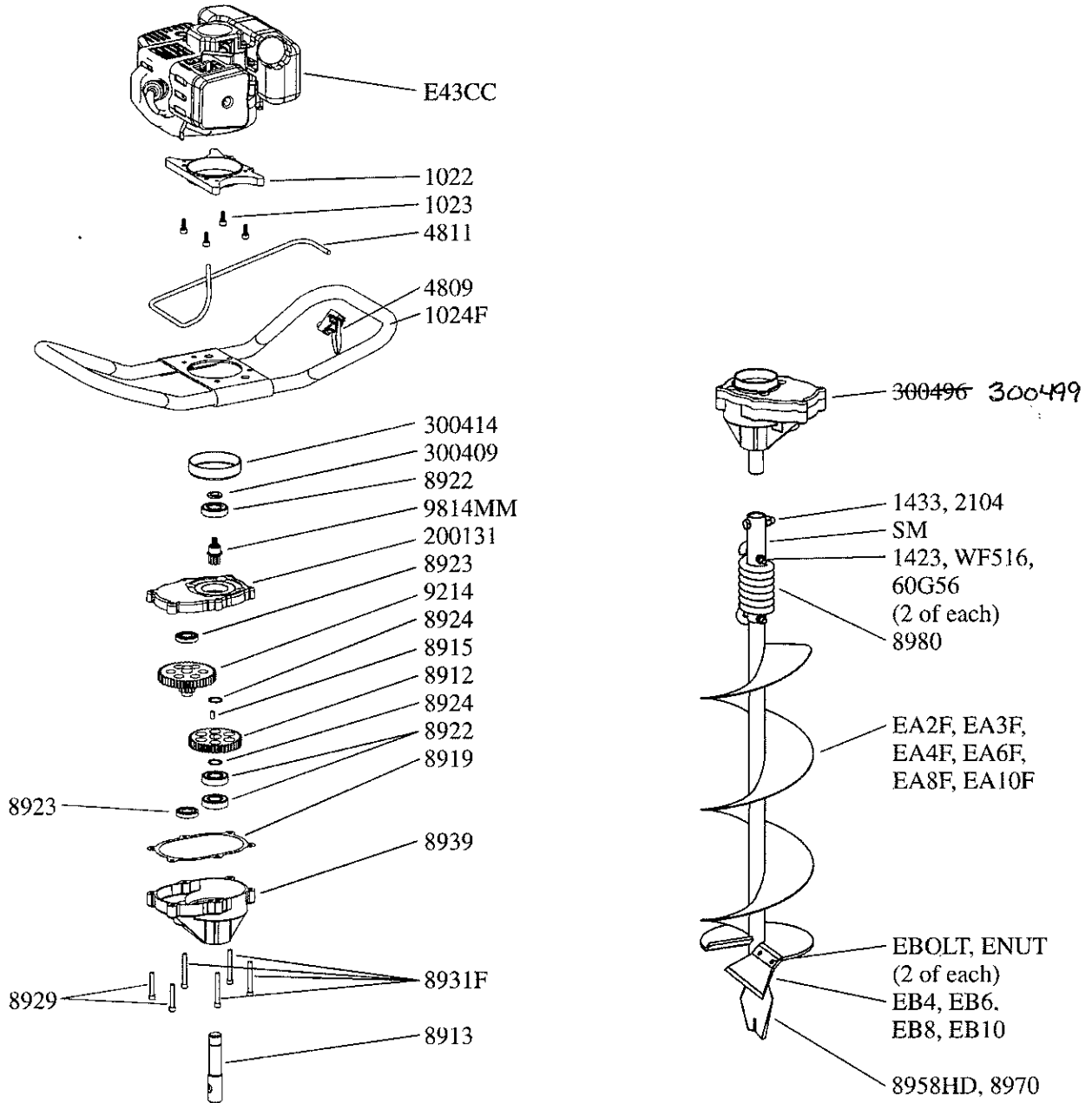
MINIMUM ORDER ..... \$10.00

## POWERHEAD PARTS

Part #	Description	Qty.	Part #	Description	Qty.
1021	Rocker Switch	1	300470	Fuel Line Hose & Filter	1
4812	Muffler Cover, Metal	1	300471	Bolt, M5 x 12mm	3
300401	Fuel Tank Cap	1	300472	Ignition Coil	1
300412	Clutch Spring	1	300474	Catlyatic Converter Muffler	1
300429	Recoil Plate	1	300475	Muffler Gasket	1
300430	Recoil Assembly	1	300476	Intake Gasket	2
300435	Air Filter	1	300477	Heat Disk	1
300437	Fuel Tank	1	300478	Intake Windpipe	1
300438	Bolt w/washer, M5 x 25mm	6	300479	Carburetor Gasket	1
300439	Bolt w/washer, M5 x 18mm	9	300480	Fuel Tank Threaded Spacer	2
300442	Clutch Rotor Shoe	2	300482	Engine Shroud	1
300444	Fuel Tank Support	2	300483	Engine Shroud Cover	1
300445	Washer, M5	2	300484	Magneto Flywheel	1
300449	Rotor Shoulder Bolt Spring Washer	2	300485	Air Deflector	1
300450	Rotor Assembly Shoulder Bolt	2	300486	Carburetor	1
300454	Intake Cover	1	300487	Engine Mounting Cover	1
300455	Intake Cover Adapter Plate	1	300488	Choke	1
300456	Bolt, M5 x 50mm	2	300489	Choke Lever	1
300457	Air Filter Cover	1	300490	Primer Line Hose	1
300458	Intake Cover	1	300491	Recoil Clutch	1
300462	Rotor Washer	2	300492	Nut, M6	2
300463	Engine Shroud Grommet	1	300493	Stud Bolt, M6 x 62mm	2
300466	Fuel Tank Grommet	1	BM6A	Spark Plug	1
300467	Locating Pin	2			

*coil air gap .011-.013*

# Earthquake E43 PARTS LIST





# E43 PARTS LIST

MINIMUM ORDER ..... \$10.00

### POWERHEAD PARTS

Part #	Description	Qty.
1022	Adapter Ring (engine to handlebar plate)	1
1023	Bolt, M6 x 1 x 16mm (ring to engine)	4
1024F	HandleBar	1
4800	Throttle Housing	1
4802	Trigger Torsion Spring	1
4803	Grooved Clevis Pin, 188 dia.	1
4804	E-Clip	1
4806	Throttle Trigger	1
4807	Screw-Soc Hd Cap, 6-32 UNC x 1/2"	1
4809	Throttle Trigger Assembly (includes 4800, 4802, 4803, 4804, 4806, 4807, 4810)	1
4810		1
4811	Throttle Cable	1
8904WC	Screw, Philips Pan Hd, #10 x 1-1/4"	1
8912	44T Gear	1
8913	Output Shaft, 7/8"	1
8915	Dowel Pin, 1/4" x 1/2", hardened steel	1
8919	Gasket	1
8922	Ball Bearing	3
8923	Ball Bearing	2
8924	Snap Ring	2
8929	Bolt-SHCS, 1/4-20 x 1-1/2" (gear case bottom to gear case top)	2
8931F	Bolt-SHCS, 1/4-20 x 2" (gear case to ring)	4
8939	Gear Case Bottom	1
9214	48T & 10T Pinion Gear Cluster, left hand thread	1
9814MM	Pinion Gear, 7 tooth threaded	1
200131	Gear Case Top	1
300409	Spacer-Drum	1
300414	Clutch Drum	1
300499 <del>300496</del>	Complete Transmission	1
E43CC	Gas Engine, 43cc	1

### EARTH AUGER PARTS

Part #	Description	Qty.
60G56	Nut-Hex 2-way reversible locknut, 5/16-18	2
1423	Bolt-HHCS, 5/16-18 x 2", Grade 5 (auger shock spring)	2
1433	Bolt-HHCS, 3/8-16 x 1-1/2" (auger to powerhead)	2
2104	Nut-Hex Locking, 3/8-16	2
8958HD	Fishtail Point (used on 4" or larger earth auger)	1
8970	Fishtail Point (used on 2" & 3" earth auger)	1
8980	Shock Spring	1
EA2F	Earth Auger, 2" w/fishtail point	1
EA3F	Earth Auger, 3" w/fishtail point	1
EA4F	Earth Auger, 4" w/fishtail point	1
EA6F	Earth Auger, 6" w/fishtail point	1
EA8F	Earth Auger, 8" w/fishtail point	1
EA10F	Earth Auger, 10" w/fishtail point	1
EB4	Earth Blade, 4" (includes EBOLT & ENUT)	1
EB6	Earth Blade, 6" (includes EBOLT & ENUT)	1
EB6HD	Heavy Duty Earth Blade, 6" (includes EBOLT & ENUT)	1
EB8	Earth Blade, 8" (includes EBOLT & ENUT)	1
EB8HD	Heavy Duty Earth Blade, 8" (includes EBOLT & ENUT)	1
EB10	Earth Blade, 10" (includes EBOLT & ENUT)	1
EB10HD	Heavy Duty Earth Blade, 10" (includes EBOLT & ENUT)	1
EBOLT	Bolt-Hex, 1/4-28 x 5/8", Grade 5 (earth blade to auger)	2
ENUT	Nut-Nyloc, 1/4-28	2
SM	Shock Mechanism (used on 6" or larger earth auger)	1
WF516	Washer-Flat, 5/16"	2

### ACCESSORIES

EXT6	Depth Extension, 6"
EXT12	Depth Extension, 12"
EXT18	Depth Extension, 18"