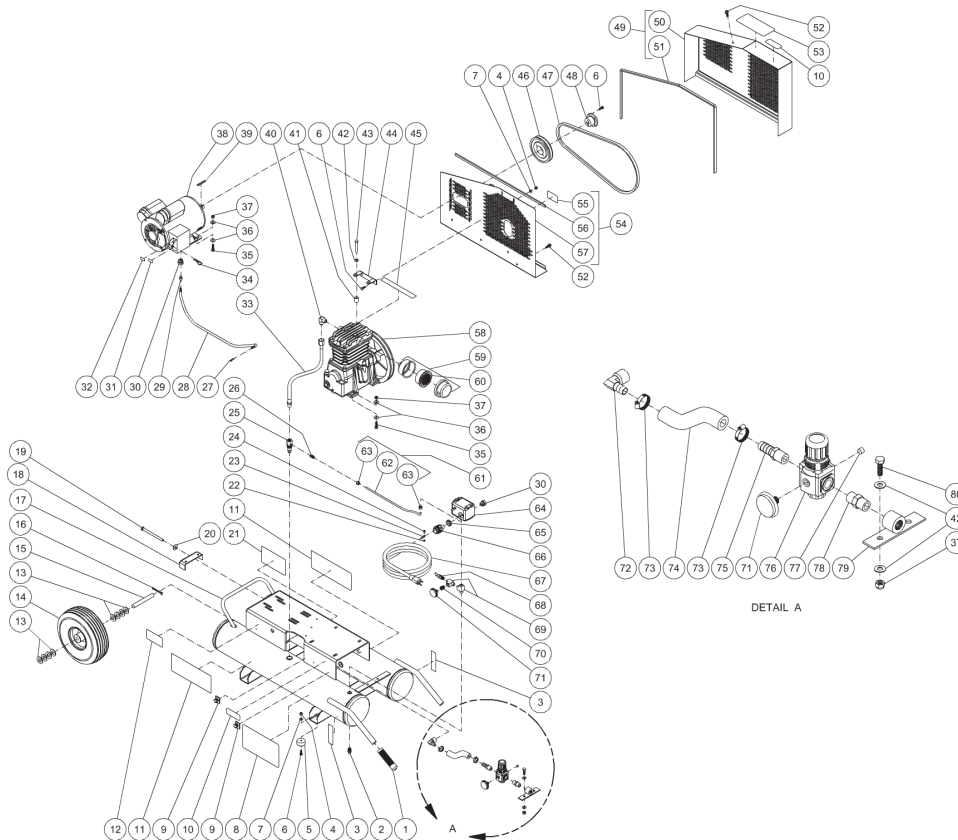




AC1-PE02-08M / AC1-PE02-08M1 (sn:20035391-99999999)

## TANK ASSEMBLY



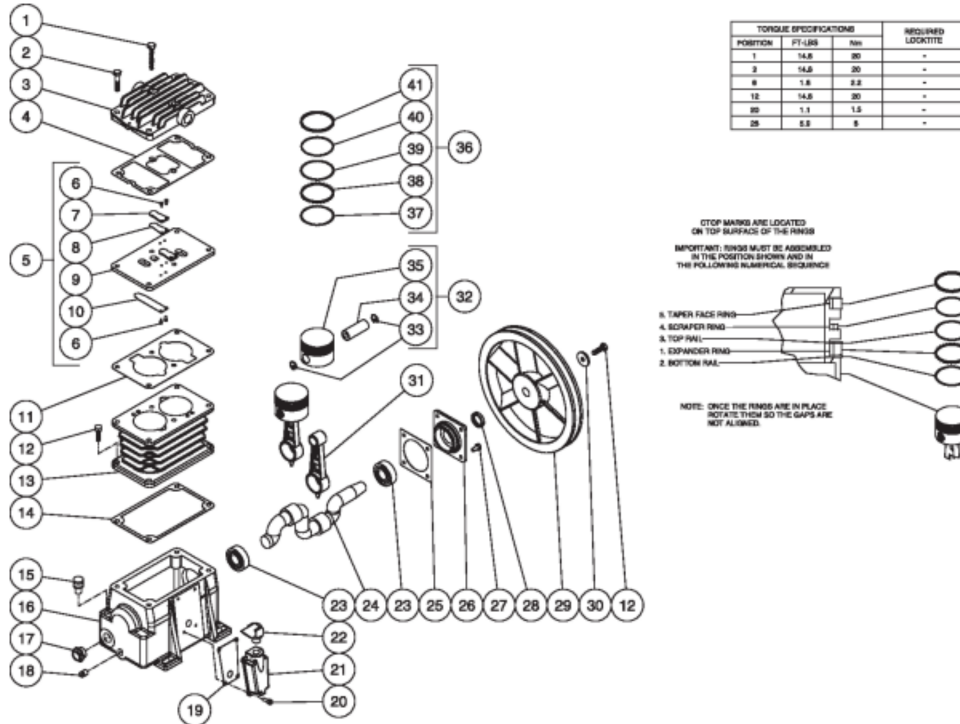
Id	Item #	Description	Quantity	Rev	Comments
1	7-0143	HANDLE GRIPS	2		
2	23-0312	DRAIN VALVE	2		
3	N/A Sep.	DECAL- DRAIN TANK (SEE 34-9016)	2		
4	30-0155	LOCKNUT	6		
5	14-0069	ISOLATOR	4		
6	27-0015	BOLT	8		
7	28-0002	WASHER	6		
8	N/A Sep.	DECAL- DANGER/WARNING/CAUTION (SEE 34-9016)	1		
9	33-0264	WIRE CLIPS	2		
10	N/A Sep.	DECAL- WARNING: HOT SURFACE (SEE 34-9016)	2		
11	34-0828	DECAL- MI-T-M LOGO	2		
12	N/A	DECAL- DATA PLATE	1		

<b>Id</b>	<b>Item #</b>	<b>Description</b>	<b>Quantity</b>	<b>Rev</b>	<b>Comments</b>
13	28-0008	WASHER	8		
14	14-0017	WHEEL	1		
15	20-0420	AXLE	1		
16	43-0092	COTTER PIN	2		
17	12-0056A01	AIR TANK ASSEMBLY	1		
18	20-0614A01	BELT TENSIONER PLATE	1		
19	27-0133	BOLT	1		
20	28-0023	WASHER	1		
21	N/A Sep.	DECAL- MAINTENANCE INSTRUCTIONS (SEE 34-9016)	1		
22	28-1009	LOCKWASHER	3		
23	32-0099	TERMINAL	3		
24	27-8933	SCREW	1		
25	22-0334	CHECK VALVE	1		
26	23-0328	ADAPTER	1		
27	32-0003	ELECTRICAL TERMINAL	4		
28	32-0445	CORD *(THREE FEET REQUIRED)	1		
29	32-0359	CRIMPED WIRE SPLICE	2		
30	9-0045	BUSHING	2		
31	N/A Sep.	DECAL- 115 VOLT (SEE 34-9016)	1		
32	N/A Sep.	DECAL- 230 VOLT (SEE 34-9016)	1		
33	15-0236	HOSE	1		
34	43-0111	COTTER PIN	1		
35	27-0068	BOLT	8		
36	28-0022	WASHER	16		
37	30-0157	LOCKNUT	10		
38	2-0137	MOTOR- 2.0 H.P.	1		
39	43-0073	KEY	1		
40	23-0426	ELBOW	1		
41	33-0358	SPACER	2		
42	28-0003	WASHER	6		
43	27-0072	SCREW	2		
44	20-0574A01	BELTGUARD BRACKET	1		
45	N/A Sep.	DECAL- CHECK OIL TAPE (SEE 34-9016)	1		
46	10-0123	SHEAVE	1		
47	11-0011	DRIVE BELT	1		
48	9-0037	BUSHING	1		
49	854-0095	BELTGUARD ASSEMBLY (INC. 50-51)	1		
50	N/A Sep.	BELTGUARD COVER (SEE 854-0095)	1		
51	33-0020	EDGING *(FOUR FEET REQUIRED)	1		

<b>Id</b>	<b>Item #</b>	<b>Description</b>	<b>Quantity</b>	<b>Rev</b>	<b>Comments</b>
52	27-9524	BOLT	4		
53	N/A Sep.	DECAL- OPERATING INSTRUCTIONS (SEE 34-9016)	1		
54	854-0094	BELTGUARD BACK ASSEMBLY (INC. 55-57)	1		
55	N/A Sep.	DECAL- WARNING: BELTGUARD IN PLACE (SEE 34-9016)	1		
56	33-0020	EDGING *(TWO FEET REQUIRED)	1		
57	N/A Sep.	BELTGUARD BACK (SEE 854-0094)	1		
58	3-0215	PUMP	1		
59	19-0083	AIR FILTER ASSEMBLY (W/COMPRESSOR) (INC. 61)	1		
60	19-0082	FILTER ELEMENT	1		
61	854-0022	TUBE ASSEMBLY (INC. 63-64)	1		
62	54-0034	COPPER TUBE *(TWO FEET REQUIRED)	1		
63	23-0315	COMPRESSION NUT	1		
64	22-0312	PRESSURE SWITCH	1		
65	32-0108	LOCKNUT	1		
66	32-0358	CORD STRAIN RELIEF	1		
67	32-0756	CORD PLUG SET	1		
68	22-0228	SAFETY RELIEF VALVE	1		
69	23-0127	STREET TEE	2		
70	23-0111	ADAPTER	1		
71	22-0271	PRESSURE GAUGE	2		
72	23-0418	ELBOW	1		
73	42-0011	HOSE CLAMP	2		
74	15-0007	HOSE *(ONE FOOT REQUIRED)	1		
75	23-0105	HOSE BARB	1		
76	22-0231	ADJUSTABLE REGULATOR- 150 PSI	1		
77	24-0082	REGULATOR PLUG	1		
78	24-0010	NIPPLE	1		
79	20-0421A01	REGULATOR MOUNTING BRACKET	1		
80	27-0067	BOLT	2		
	34-9016	SAFETY DECAL KIT (INC. 3, 8, 10, 21, 45, 53, 55)			
		*MUST ORDER IN ONE FOOT LENGTHS			



# PUMP



Id	Item #	Description	Quantity	Rev	Comments
1	27-0071	SCREW	2		
2	27-0069	SCREW	4		
3	46-1199	CYLINDER HEAD	1		
4	N/A Sep.	HEAD GASKET (SEE 70-0326)	1		
5	46-0952	VALVE PLATE ASSEMBLY (INC. 6-10)	2		
6	N/A Sep.	VALVE SCREW (SEE 70-0327)	8		
7	N/A Sep.	VALVE STOP (SEE 70-0327)	2		
8	N/A Sep.	OUTLET REED VALVE (SEE 70-0327)	2		
9	N/A	VALVE PLATE	1		
10	N/A Sep.	INLET REED VALVE (SEE 70-0327)	2		
11	N/A Sep.	CYLINDER VALVE PLATE GASKET (SEE 70-0326)	1		
12	27-0067	SCREW	5		
13	46-0953	CYLINDER	1		
14	N/A Sep.	CYLINDER TO CRANKCASE GASKET (SEE 70-0326)	1		

<b>Id</b>	<b>Item #</b>	<b>Description</b>	<b>Quantity</b>	<b>Rev</b>	<b>Comments</b>
15	46-1144	OIL FILL PLUG	1		
16	46-1194	CRANKCASE	1		
17	46-1145	OIL SIGHT GLASS	1		
18	24-0082	PLUG	1		
19	26-0292	GASKET	1		
20	27-8885	BOLT	4		
21	46-1195	COVER	1		
22	46-1196	ELBOW	1		
23	48-0016	BEAR BALL	2		
24	46-0955	CRANKSHAFT	1		
25	N/A Sep.	FLANGE GASKET (SEE 70-0326)	1		
26	46-0957	FLANGE	1		
27	27-0014	SCREW	4		
28	26-0246	SHAFT OIL SEAL	1		
29	10-0115	FLYWHEEL	1		
30	N/A Sep.	WASHER W/CRANKSHAFT (SEE 46-0955)	1		
31	46-0958	CONNECTING ROD	2		
32	70-0329	PISTON KIT (INC. 33-35)	2		
33	N/A Sep.	SNAP RING (SEE 70-0329)	4		
34	N/A Sep.	WRIST PIN (SEE 70-0329)	2		
35	N/A Sep.	PISTON (SEE 70-0329)	2		
36	70-0328	PISTON SEALS KIT (INC. 37-41)	2		
37	N/A Sep.	BOTTOM RAIL (SEE 70-0328)	2		
38	N/A Sep.	EXPANDER RING (SEE 70-0328)	2		
39	N/A Sep.	TOP RAIL (SEE 70-0328)	2		
40	N/A Sep.	SCRAPER PISTON RING (SEE 70-0328)	2		
41	N/A Sep.	TAPER FACE PISTON RING (SEE 70-0328)	2		
KIT	70-0326	GASKET KIT (INC. 4, 11, 14, 25)			
KIT	70-0327	VALVE PLATE KIT (INC. 6-8, 10)			
KIT	70-0328	PISTON SEALS KIT (INC. 37-41)			
KIT	70-0329	PISTON KIT (INC. 33-35)			