



Operator's Manual
Manuel de l'utilisateur

HPS10IC Pellet Stove



WARNING

PLEASE READ THIS ENTIRE MANUAL BEFORE INSTALLATION AND USE OF THIS PELLET FUEL-BURNING ROOM HEATER. FAILURE TO FOLLOW THESE INSTRUCTIONS COULD RESULT IN PROPERTY DAMAGE, BODILY INJURY OR EVEN DEATH.

AVERTISSEMENT

VEUILLEZ LIRE CE MANUEL EN ENTIER AVANT D'INSTALLER ET D'UTILISER CET APPAREIL DE CHAUFFAGE AUTONOME À GRANULES, AFIN D'ÉCARTER LES RISQUES DE DÉGÂTS MATÉRIELS, DE BLESSURES CORPORELLES, VOIRE DE MORT.



CAUTION **DO NOT DISCARD!**

- IMPORTANT OPERATING AND MAINTENANCE INSTRUCTIONS INCLUDED.
- SAVE THESE INSTRUCTIONS AND LEAVE THIS MANUAL WITH ANY PARTY RESPONSIBLE FOR USE AND OPERATION.

ATTENTION NE PAS JETER!

- IMPORTANTES INSTRUCTIONS D'UTILISATION ET D'ENTRETIEN INCLUSES.
- CONSERVEZ CES INSTRUCTIONS ET LAISSEZ CE MANUEL À TOUTE PERSONNE RESPONSABLE DE L'UTILISATION ET DU FONCTIONNEMENT.

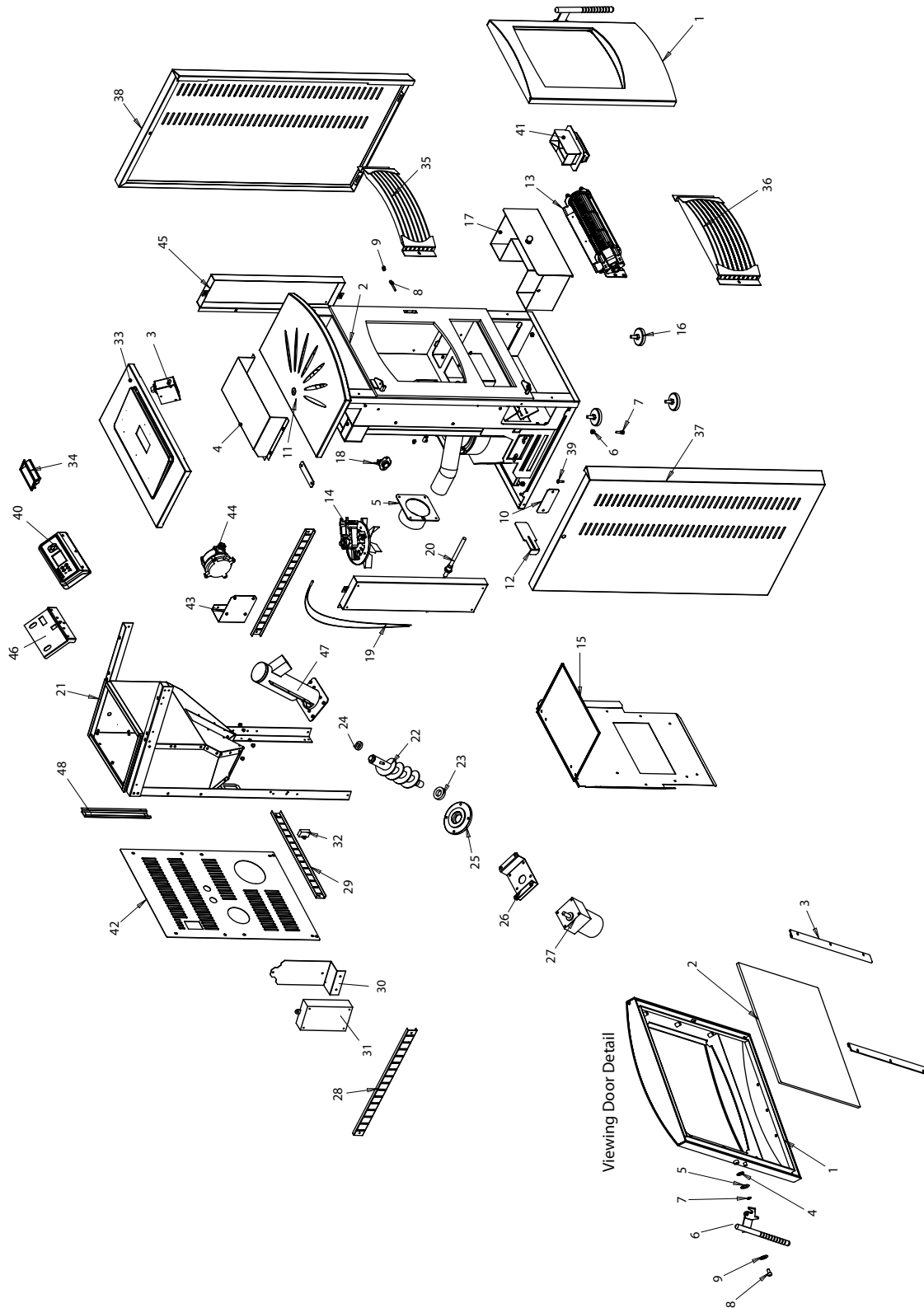
CAUTION

CONTACT LOCAL BUILDING OR FIRE OFFICIALS ABOUT RESTRICTIONS AND INSTALLATION INSPECTION REQUIREMENTS FOR YOUR AREA.

ATTENTION

CONSULTER LES SERVICES DU BÂTIMENT OU D'INCENDIE LOCAUX CONCERNANT LES RESTRICTIONS ET LES EXIGENCES D'INSPECTION D'INSTALLATION EN VIGUEUR.

PARTS EXPLOSION FOR HPS10IC



PARTS LIST FOR HPS10IC

KEY #	PART #	DESCRIPTION	QTY.
1	720204	ASSEMBLY FRONT DOOR	1
2*	720205	WELD ASSEMBLY FIRE BOX	1
3	720105	SWITCH HOPPER LID	1
4*	720206	TOP CONVECTION AIR DEFLECTOR	1
5*	720207	WELD ASSEMBLY VENT PIPE OUTLET	1
6*	720208	HINGE COVER	1
7*	720209	HINGE PIN	1
8	720210	DOOR LOCK BOLT	1
9	720285	DOOR LOCK SHAFT SLEEVE	1
10*	720212	COVER PLATE EXHAUST CLEANING HOLE	1
11	720213	TOP PLATE	1
12*	720214	AIR DAMPER SLIDING DOOR	1
13	720104	BLOWER CONVECTION	1
14	720110	EXHAUST BLOWER	1
15*	720215	ASSEMBLY THERMAL BAFFLE	1
16	720216	ADJUSTABLE FOOT	4
17	720217	ASH PAN ASSEMBLY	1
18	720015	SWITCH SNAP DISC 52 DEGREE CELSIUS	1
19	720106	RDT OVERTEMP SENSOR 92 DEGREE CELSIUS	1
20	720307	IGNITER	1
21*	720218	HOPPER FRAME	1
22	720219	WELD ASSEMBLY AUGER	1
23	720220	AUGER BEARING LOWER	1
24	720221	AUGER BEARING UPPER	1
25	720222	LOWER COVER PLATE AUGER	1
26*	720223	AUGER MOTOR MOUNT PLATE	1
27	720107	GEAR MOTOR	1
28*	720224	WIRE CHANNEL LEFT AND RIGHT	2
29*	720225	WIRE CHANNEL BACK	1
30*	720305	BRACKET INNERFACE MODULE IC	1
31	720304	INTERFACE MODULE IC	1
32	720227	INCOMING POWER SWITCH	1
33	720228	HOPPER COVER AND TOP ASSEMBLY	1
34	720229	HOPPER COVER HANDLE	1
35*	720230	LOUVER AIR OUTLET	1
36*	720231	LOUVER AIR INLET	1
37	720299	SIDE PANEL LEFT 10IC	1

KEY #	PART #	DESCRIPTION	QTY.
38	720233	SIDE PANEL RIGHT 10IC	1
39	720234	FIXED PIN TOP HINGE	1
40	720298	CONTROL BOARD	1
41	720235	FIREPOT	1
42	720300	BACK PANEL	1
43*	720237	BRACKET VACUUM SWITCH	1
44	720238	VACUUM SWITCH	1
45*	720239	THERMAL SHIELD	2
46	720301	CONTROLLER BRACKET IC	1
47	720120	AUGER HOUSING	1
48*	720306	COVER COMMUNICATION CABLE	1

* Not a serviceable part. Special order only.

VIEWING DOOR COMPONENTS

KEY #	PART #	DESCRIPTION	QTY.
1	720241	DOOR ASSEMBLY	1
2	720242	DOOR GLASS	1
3	720243	DOOR GLASS RETAINER	1
4	720244	INBOARD WAVE WASHER	1
5	720245	OUTBOARD RETAINER WASHER	1
6	720246	DOOR HANDLE	1
7	720247	OUTBOARD SPACER SLEEVE	1
8	720248	DOOR HANDLE RETAINER BOLT	1
9	720211	DOOR LOCK SHAFT SLEEVE	1

PARTS AVAILABLE, BUT NOT SHOWN

PART #	DESCRIPTION	QTY.
720302	COMMUNICATION CABLE 10IC	1
720288	AUGER CAPACITOR HPS10	1
720303	WIRE HARNESS HPS10IC	1
720290	TOP-BACK VERMICULITE BOARD	1
720291	BOTTOM-BACK VERMICULITE BOARD	1
720292	SIDE VERMICULITE BOARD	1
720114	FUSE	1
720308	IGNITER RETAINER HPS10IC	1
11716	GASKET CLEANING PORT TOP	1
11717	GASKET CLEANING PORT BOTTOM	1
11718	GASKET AUGER CASTLE	1
11720	BUSHING CV MOTOR CASTLE	1
11721	REMOTE CONTROL SM BLACK	1
720294	GASKET EXHAUST MOTOR TO FLANGE	1
720295	GASKET EXHAUST FLANGE TO MANIFOLD	1