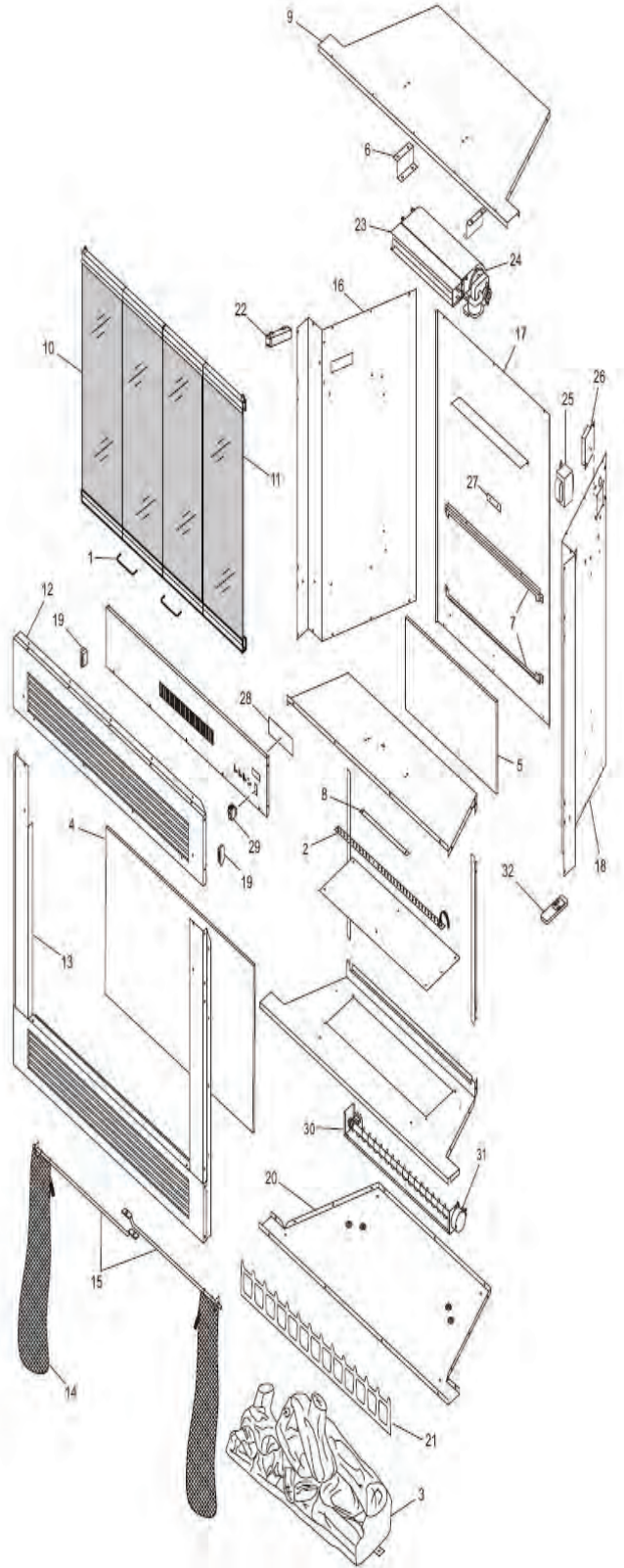


FMI Eastlake II 36" Electric Fireplace

MODELS: EL36L

	Part Number	Description
1	120929-01	Door Handles *
2	120929-02	LED Ember Strip
3	120929-03	Log Set
4	120929-04	Rear Glass (Screen)
5	120929-05	Flame Effect Mirror
6	120928-46	Heater/Blower Bracket
7	120928-44	Flame Effect Mirror Bracket
8	120927-16	Back Light Strip
9	**	Top
10	120929-10	Glass Door, Left *
11	120929-11	Glass Door, Right *
12	120929-12	Control Panel Door
13	120929-13	Front Panel
14	120929-14	Mesh Screens (2 Required)
15	120929-15	Screen Rods (2 Required)
16	**	Back Panel, Left Side
17	**	Back Panel, Center
18	**	Back Panel, Right Side
19	120929-19	Magnetic Catch
20	**	Bottom Panel
21	120928-40	Grate
22	120927-08	Handles
23	120928-42	Heater
24	120928-43	Blower
25	120928-27	Transformer
26	120928-26	Main Control Board & Standoffs
27	120927-21	Remote Control Sensor
28	120927-12	Settings Control Board
29	120927-24	ON/OFF Switch
30	120929-21	LED Drum Assembly
31	120927-14	Motor
32	120927-20	Remote Control
PARTS AVAILABLE - NOT SHOWN		
	120927-23	Thermocouple, Temp Sensor

* Optional for model EL36L.



** Not Field Replaceable Part