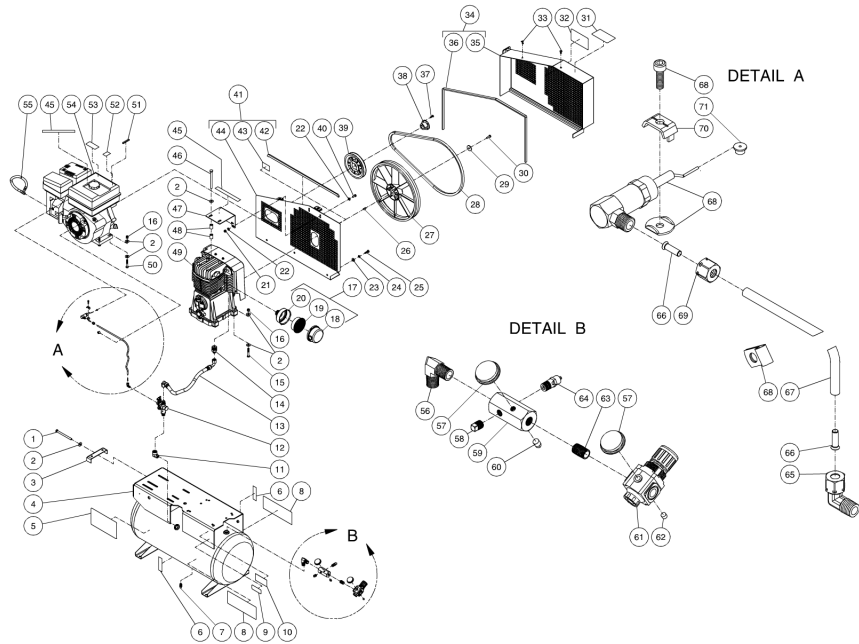




AC2-SR09-20M / AC2-SR09-20M (sn:20024699-99999999)

TANK ASSEMBLY



Id	Item #	Description	Quantity	Rev	Comments
1	27-0133	BOLT	1		
2	28-0023	FLATWASHER	19		
3	20-0650A01	BELT TENSIONER PLATE	1		
4	N/A	AIR TANK ASSEMBLY	1		
5	N/A Sep.	DECAL- DANGER/WARNING/CAUTION (SEE 34-9016)	1		
6	N/A Sep.	DECAL- TANK DRAIN (SEE 34-9016)	2		
7	23-0312	PETCOCKS	1		
8	34-0828	DECAL- MI-T-M AIR COMPRESSOR	2		
9	N/A Sep.	DECAL- MUFFLER HOT (SEE 34-9016)	1		
10	N/A	DECAL- DATA PLATE	1		
11	24-0041	ELBOW	1		
12	22-0270	PILOT VALVE	1		
13	15-0188	HOSE	1		
14	24-0160	ADAPTER	1		

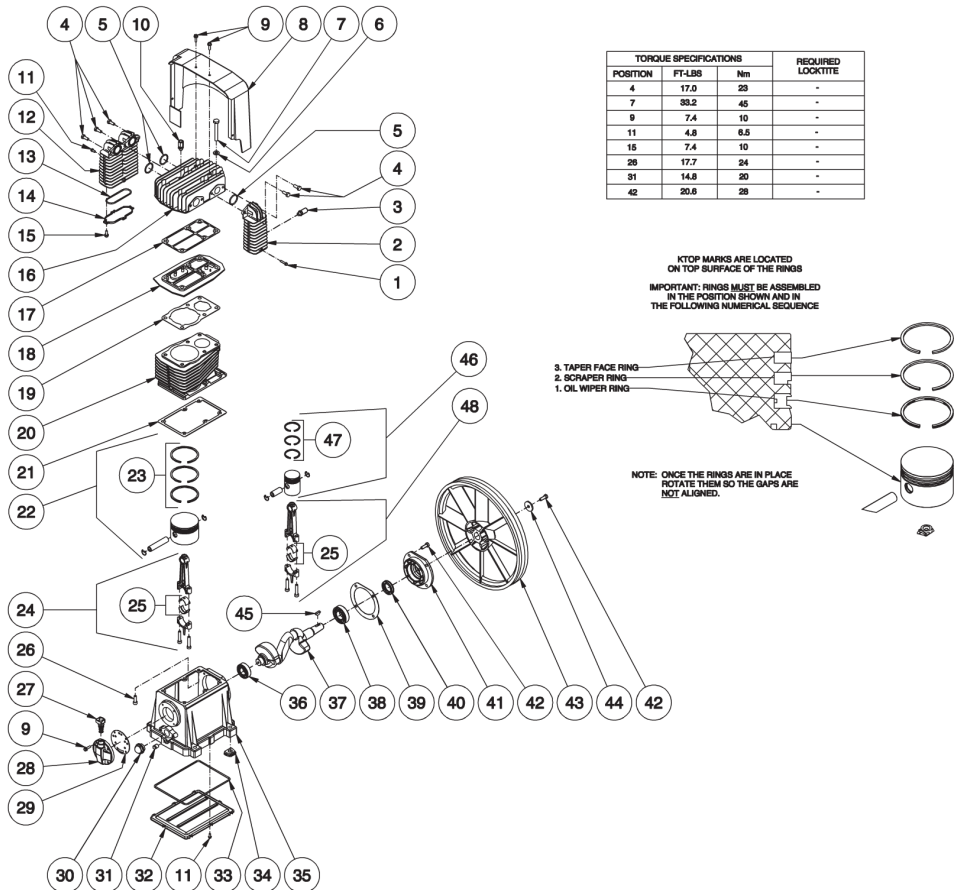
Id	Item #	Description	Quantity	Rev	Comments
15	27-0122	BOLT	4		
16	30-0159	LOCKNUT	8		
17	19-0219	AIR FILTER ASSEMBLY (INC. 18-20)	1		
18	N/A Sep.	BACK FILTER HOUSING (SEE 19-0219)	1		
19	19-0220	FILTER ELEMENT	1		
20	N/A Sep.	FRONT FILTER HOUSING (SEE 19-0219)	1		
21	30-0157	LOCKNUT	2		
22	28-0003	WASHER	4		
23	28-0022	WASHER	3		
24	29-0007	LOCKWASHER	3		
25	27-0067	BOLT	3		
26	43-0102	KEY	1		
27	10-0095	FLYWHEEL W/COMPRESSOR	1		
28	11-0066	DRIVE BELT	1		
29	28-1032	FLATWASHER FLYWHEEL W/COMPRESSOR	1		
30	27-8433	BOLT W/COMPRESSOR	1		
31	N/A Sep.	DECAL- OPERATING INSTRUCTIONS (SEE 34-9016)	1		
32	N/A Sep.	DECAL- MAINTENANCE INSTRUCTIONS (SEE 34-9016)	1		
33	33-0197	FASTENER	2		
34	854-0067	FRONT BELTGUARD ASSEMBLY (INC. 35-36)	1		
35	N/A Sep.	FRONT BELTGUARD (SEE 854-0067)	1		
36	33-0020	EDGING *(FIVE FEET REQUIRED)	1		
37	27-0017	BOLT	2		
38	9-0005	BUSHING	1		
39	10-0014	SHEAVE	1		
40	27-0066	BOLT	2		
41	854-0066	BACK BELTGUARD ASSEMBLY (INC. 42-44)	1		
42	33-0020	EDGING *(THREE FEET REQUIRED)	1		
43	N/A Sep.	DECAL- WARNING: BELTGUARD IN PLACE (SEE 34-9016)	1		
44	N/A Sep.	BACK BELTGUARD (SEE 854-0066)	1		
45	N/A Sep.	DECAL- CHECK OIL TAPE (SEE 34-9016)	2		
46	27-8074	BOLT	2		
47	20-0818A01	SUPPORT BRACKET	1		
48	33-0425	SPACER	4		
49	3-0174	COMPRESSOR	1		
50	27-0121	BOLT	4		
51	43-0078	KEY	1		
52	N/A Sep.	DECAL- ENGINE FUEL (SEE 34-9016)	1		
53	N/A Sep.	DECAL- MUFFLER HOT (SEE 34-9016)	1		

Id	Item #	Description	Quantity	Rev	Comments
54	1-0134	ENGINE- 9 HP SUBARU	1		
55	70-0380	DRAINZIT DRAIN ASSEMBLY	1		
56	24-0267	ELBOW	1		
57	22-0271	PRESSURE GAUGE	2		
58	24-0009	PLUG	1		
59	24-0266	MANIFOLD	1		
60	24-0082	PLUG	1		
61	22-0231	ADJUSTABLE REGULATOR	1		
62	N/A	REGULATOR PLUG	1		
63	24-0175	NIPPLE	1		
64	22-0267	PRESSURE RELIEF VALVE	1		
65	23-0316	ELBOW	1		
66	23-0425	TUBE SUPPORT INSERT	2		
67	15-0238	TUBE *(TWO FEET REQUIRED)	1		
68	33-0394	THROTTLE CONTROL	1		
69	23-0315	COMPRESSION NUT	1		
70	45-0084	ENGINE THROTTLE CLIP	1		
71	62-0126	THROTTLE CONTROL ADAPTER	1		
	34-9016	SAFETY DECAL KIT (INC. 5-6, 9, 31-32, 43, 45, 52-53)			
		*MUST ORDER IN ONE FOOT LENGTH			



AC2-SR09-20M / AC2-SR09-20M (sn:20024699-99999999)

TWO STAGE COMPRESSOR



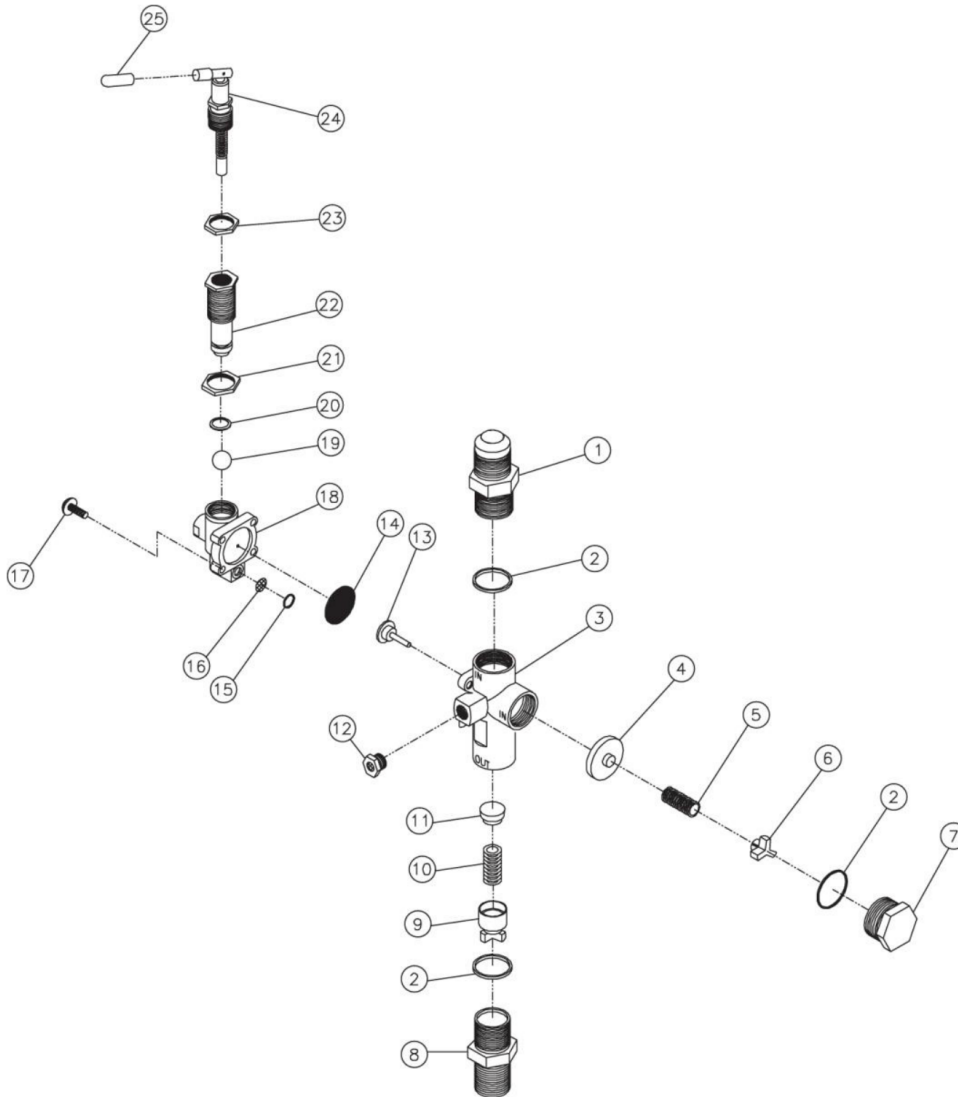
Id	Item #	Description	Quantity	Rev	Comments
1	27-8807	BOLT	1		
2	46-1156	AFTER COOLER	1		
3	22-0385	SAFETY VALVE	1		
4	27-8032	BOLT	5		
5	25-0439	O-RING	3		
6	28-1021	WASHER	6		
7	27-8934	BOLT	6		
8	N/A	AIR SHROUD	1		
9	27-8002	BOLT	6		
10	22-0386	SAFETY VALVE	1		
11	27-9575	SCREW	9		

Id	Item #	Description	Quantity	Rev	Comments
12	46-1157	INTER COOLER	1		
13	25-0440	O-RING	1		
14	46-0816	INTER COOLER COVER	1		
15	27-8906	SCREW	4		
16	46-1158	PUMP HEAD	1		
17	N/A Sep.	HEAD GASKET (SEE 70-0240)	1		
18	22-0283	VALVE PLATE ASSEMBLY	1		
19	N/A Sep.	CYLINDER GASKET (SEE 70-0240)	1		
20	46-0817	CYLINDER	1		
21	N/A Sep.	CRANKCASE GASKET (SEE 70-0240)	1		
22	N/A	COMPLETE PISTON	1		
23	70-0238	RING SET KIT	1		
24	N/A	CONNECTING ROD	1		
25	N/A	CONNECTING ROD BEARING	2		
26	27-8194	SCREW	6		
27	46-0818	CRANKCASE FILL HOLE PLUG W/ O-RING	1		
28	46-0819	OIL FILL END CAP	1		
29	N/A Sep.	OIL FILL END CAP GASKET (SEE 70-0240)	1		
30	46-0820	OIL LEVEL SIGHT GLASS W/ O-RING	1		
31	39-0106	OIL DRAIN PLUG	1		
32	N/A	OIL PAN	1		
33	N/A Sep.	OIL PAN O-RING (SEE 70-0240)	1		
34	46-0821	ISOLATOR	4		
35	N/A	CRANKCASE	1		
36	48-0060	BALL BEARING	1		
37	N/A	PISTON CRANKSHAFT	1		
38	48-0024	BALL BEARING	1		
39	N/A Sep.	FRONT END CAP GASKET (SEE 70-0240)	1		
40	26-0208	CRANKSHAFT SEAL	1		
41	46-0822	FRONT END CAP	1		
42	27-8033	BOLT	5		
43	10-0130	FLYWHEEL	1		
44	28-1032	WASHER	1		
45	43-0102	KEY	1		
46	N/A	COMPLETE PISTON	1		
47	70-0239	RING SET KIT	1		
48	N/A	CONNECTING ROD	1		
KIT	70-0240	GASKET KIT (INC. 5, 13, 17, 19, 21, 29, 33, 39)			



AC2-SR09-20M / AC2-SR09-20M (sn:20024699-99999999)

PILOT VALVE



Id	Item #	Description	Quantity	Rev	Comments
1	N/A	INLET PORT FITTING	1		
2	N/A Sep.	O-RING (SEE 70-0241)	3		
3	N/A	MAIN BODY	1		
4	N/A Sep.	PISTON ASSEMBLY-UNLOADER VALVE (SEE 70-0241)	1		
5	N/A Sep.	SPRING-UNLOADER VALVE (SEE 70-0241)	1		
6	N/A	SPRING SEAT-UNLOADER VALVE	1		
7	N/A	CAP	1		

Id	Item #	Description	Quantity	Rev	Comments
8	N/A	DISCHARGE PORT FITTING	1		
9	N/A	SPRING SEAT ASSEMBLY-CHECK VALVE	1		
10	N/A Sep.	SPRING-CHECK VALVE (SEE 70-0241)	1		
11	N/A Sep.	PISTON-CHECK VALVE (SEE 70-0241)	1		
12	23-0419	MUFFLER	1		
13	N/A Sep.	STEM UNLOADER (SEE 70-0241)	1		
14	N/A Sep.	DIAPHRAM (SEE 70-0241)	1		
15	N/A Sep.	O-RING (SEE 70-0241)	1		
16	N/A Sep.	SCREEN (SEE 70-0241)	1		
17	N/A	SCREW W/WASHER	4		
18	N/A	PILOT BODY	1		
19	N/A Sep.	BALL (SEE 70-0241)	1		
20	N/A Sep.	O-RING (SEE 70-0241)	1		
21	N/A	DIFFERENTIAL ADJUSTING LOCKNUT	1		
22	N/A	DIFFERENTIAL ADJUSTING NUT	1		
23	N/A	PRESSURE ADJUSTING LOCKNUT	1		
24	N/A Sep.	PRESSURE ADJUSTING TOGGLE ASSEMBLY (SEE 70-0241)	1		
25	N/A	RED TOGGLE COVER	1		
KIT	70-0241	REPAIR KIT (INC. 2 EACH 3, 4-5, 10-11, 13-16, 19-20, 24			