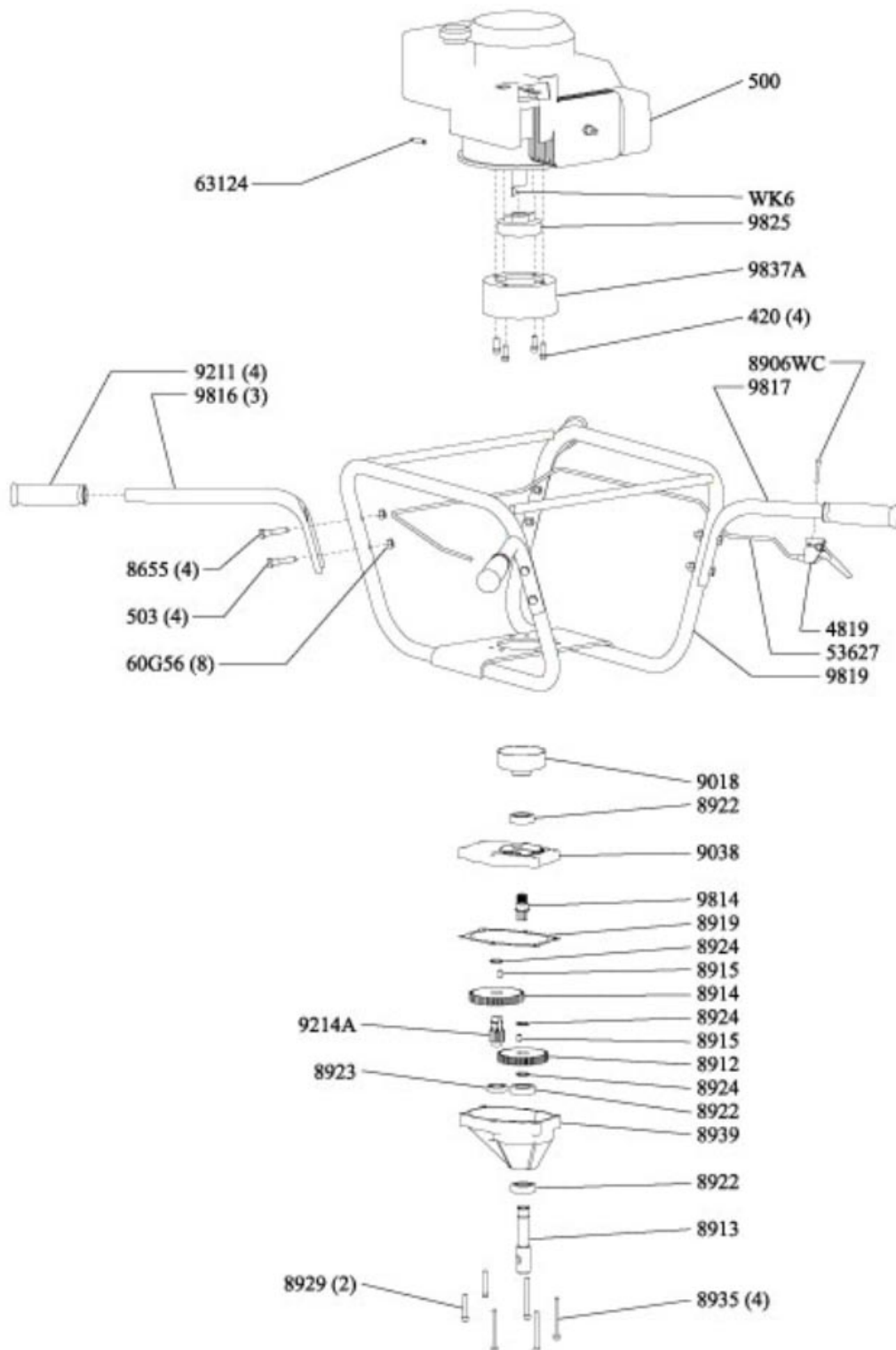


9800B™ EARTH AUGER POWERHEAD WITH BRIGGS & STRATTON® ENGINE (MODEL YEAR 2005)



Key No.	Part No.	Description
60G56	60G56	60G56 NUT 5/16-18 IN HLKBW GR5 ZN
420	420	420 BOLT 5/16-24 X 3/4IN 12PTF GR2 BLKZN F-T
500	500	500 ENGINE 6.5 HP BRIGGS VERTICAL
503	503	503 BOLT 5/16-18 X 1-1/2 HH GR5 ZN F-T
8655	8655	8655 BOLT 5/16-18 X 1-3/4 HH GR5 ZN
8906WC	8906WC	8906WC BOLT 10-32 X 1-1/4 PPH ZN
8914	8914	8914 GEAR 48T 14 T/IN 20° PA 3/4 ID HARD
8935	8935	8935 BOLT 1/4-20X2-1/2 IN SHCS GR5 BLK OX
9018	9018	9018 CLUTCH DRUM 3 IN THREADED SHORT
9038	9038	9038 GEAR CASE UPPER HALF
9211	9211	9211 HANDLE GRIP 7/8 IN ID FLANGELESS
9214A	9214A	9214A PINION 10T 14 T/IN 20° PA 3/4 OD
9816	9816	9816 HANDLE NO THROTTLE HOLE 9800B
9817	9817	9817 HANDLE W/THROTTLE HOLE
9819	9819	9819 HANDLEBAR FRAME WELDMENT 9800B
9825	9825	9825 ROTOR CENTRIFUGAL CLUTCH COMPLETE
9837A	9837A	9837A MOUNT RING COMPLETE 9800
53627	53627	53627 CABLE THROTTLE 43.50 9800B
63124	63124	63124 SPRING EXTENSION FOR 9800 THROTTLE
WK6	WK6	WK6 KEY WOODRUFF 5/32 X 5/8 IN ZN