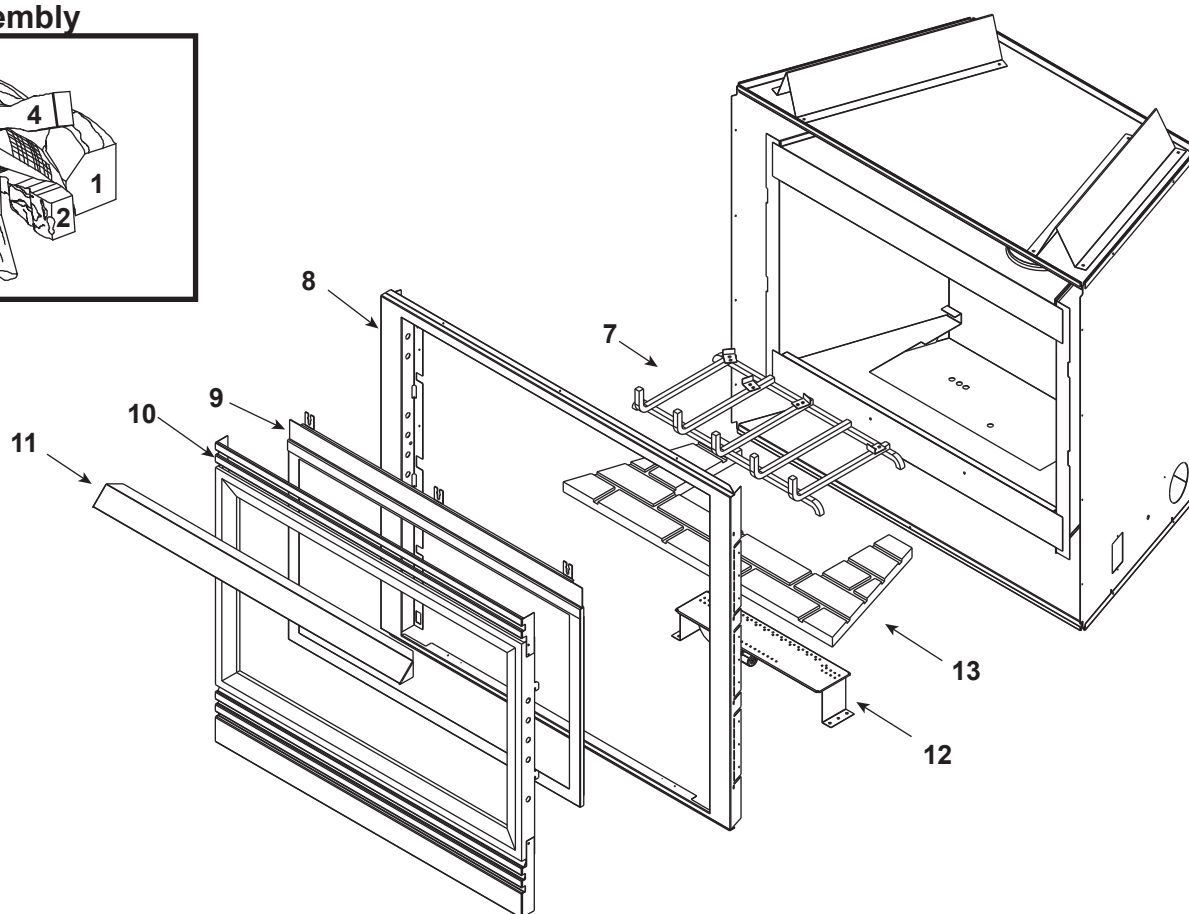
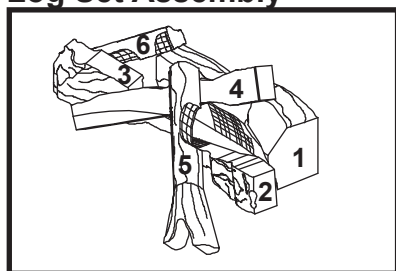


Log Set Assembly



IMPORTANT: THIS IS DATED INFORMATION.: When requesting service or replacement parts for your appliance please provide model number and serial number. All parts listed in this manual may be ordered from an authorized dealer.



**Stocked
at Depot**

ITEM	DESCRIPTION	COMMENTS	PART NUMBER	
	Log Set Assembly	Includes Grate	LOGS-CAMP	Y
1	Log 1		SRV530-711	
2	Log 2		SRV446-702	
3	Log 3		SRV446-703	
4	Log 4		SRV446-704	
5	Log 5		SRV446-705	
6	Log 6		SRV446-706	
7	Grate Assembly		446-360A	
8	Surround	No longer available	414-130	
9	Glass Door Assembly		GLA-6XLS	Y
10	Decorative		DF-36H	
11	Hood		SRV60-143-BK	
12	Burner NG		446-176A	Y
	Burner LP		446-175A	Y
13	Refractory		SRV446-338	



Service Parts

6000XLT-NF

No one builds a better fire

Beginning Manufacturing Date: Feb 1997

Ending Manufacturing Date: March 1999

IMPORTANT: THIS IS DATED INFORMATION.: When requesting service or replacement parts for your appliance please provide model number and serial number. All parts listed in this manual may be ordered from an authorized dealer.



Stocked at Depot

ITEM	DESCRIPTION	COMMENTS	PART NUMBER	
	Fan Kit		GFK-160A	
	Flex Ball Valve Assembly		SRV302-320	Y
	High Limit Switch		092-531	Y
	Junction Box		100-250A	Y
	Mesh Assembly		MESH-36B	Y
	Mineral Wool		050-721	
	Orifice NG (#32A)		420-800	Y
	Orifice LP (#50A)		446-801	Y
	Piezo Ignitor		291-513	Y
	Pilot Assembly NG		446-510A	Y
	Pilot Assembly LP		446-511A	
	Thermocouple		446-511	Y
	Thermopile		2103-512	Y
	Remote		SMART-STAT-HNG	
	Touch Up Paint		TUPB-12	
	Valve NG		060-522	Y
	Valve LP		060-523	Y
	Valve Bracket	No longer available	073-145	
	Conversion Kit NG	No longer available	NGK-6XLS	
	Conversion Kit LP	No longer available	LPK-6XLS	
	Pilot Orifice NG		SRV446-505	Y
	Pilot Orifice LP		SRV446-517	Y
	Regulator NG		SRV060-518	Y
	Regulator LP		060-519	Y