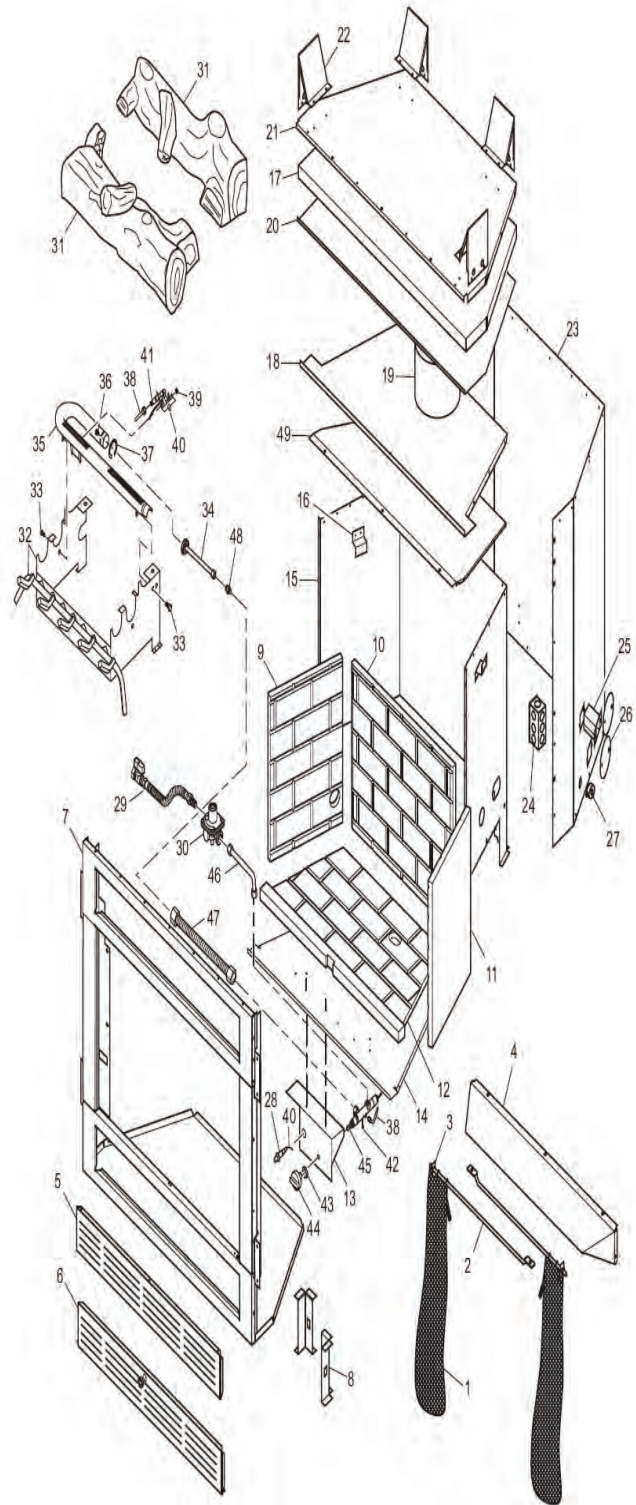


FMI Chalet 32" Vent Free Manual Control Single Burner Fireplace

MODELS: L32HN, L32LHN, L32HP, L32LHP

	Part Number	Description
1	108441-01	Screen (2 Required)
2	108701-01	Screen Rod (2 Required)
3	11418	Push-On Nut
4	108414-01	Deflector Hood
5	108423-01	Smooth Face Top Panel
	108423-02	Louver Face Top Panel
6	115314-01	Smooth Face Bottom Assem.
	115314-04	Louver Face Bottom Assembly
7	**	Face Weldment
8	106683-01	Firebox Support Leg
9	108434-01	Left Refractory
10	108430-01	Rear Refractory
11	108432-01	Right Refractory
12	115262-01	Bottom Refractory
13	116024-01	Valve Bracket
14	**	Firebox Bottom
15	**	Firebox Surround
16	20027	Refractory Retainer
17	**	Firebox Top Insulation
18	**	Firebox Top
19	**	Starter Pipe Collar
20	**	Insulation Pan
21	**	Fireplace Top
22	20280	Top Spacer
23	**	Fireplace Surround
24	24353	Handy Box Assembly
25	108654-01	Gas Conduit Left & Right Assem.
26	21171	Gas Knock-Out Cover
27	14123	Strain Relief
28	102445-01	Piezo Ignitor
29	14253	Gas Line Flex w/ Shut Off
30	098867-14	Regulator
31	110397-01	Two Piece Log Set
32	**	Painted Base Assembly
33	M11084-38	Hex Head Screw
34	116011-01	Outlet Burner Tube
35	102963-01	Burner
36	099056-20	Burner Orifice
37	102843-01	Burner Clip
38	099387-05	Pilot Tube
39	098249-01	M5 Nut
40	098271-10	Ignitor Cable
41	104285-01	ODS Pilot (Natural)
	104286-01	ODS Pilot (Propane)
42	098276-01	1/8" NPT Hex Head Plug
43	098508-01	Valve Retainer Nut
44	098534-01	Control Knob
45	102568-07	Control Valve
46	116059-01	Inlet Tube
47	111817-04	Flexible Dormont T6-21 3/8
48	115998-01	3/8" Compression Union
49	**	Shield Firebox Top



Part No.	Description
PARTS AVAILABLE NOT SHOWN	
100563-01	Warning Label
101055-02	Lighting Instruction Plate
100639-01	Caution Decal
GA6060	Lava Rock