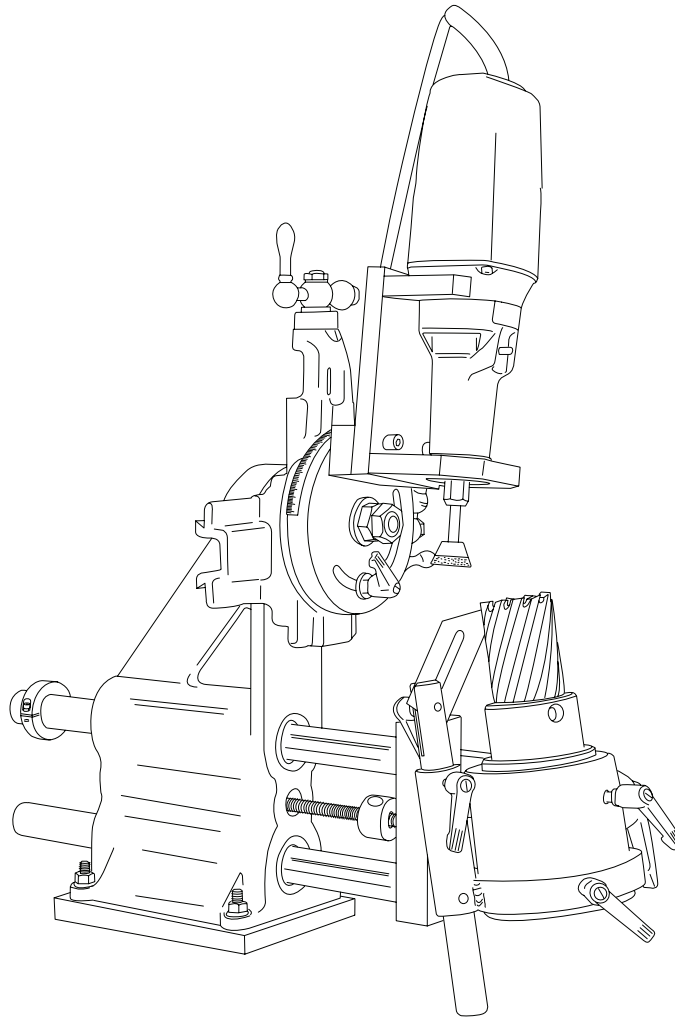


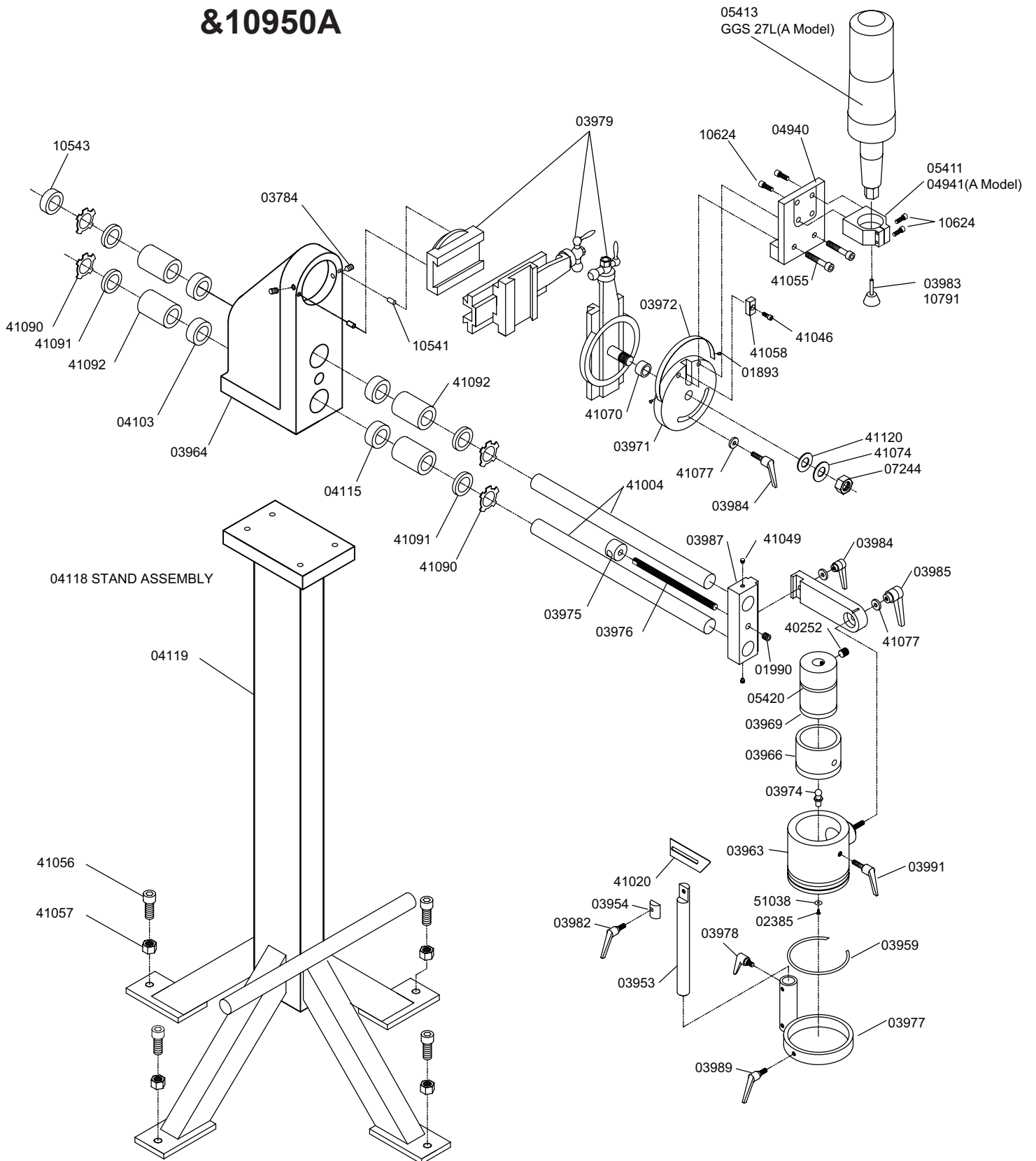


MODELS 10950 & 10950A SHARPENING MACHINE OPERATOR'S MANUAL



For Use with "12,000-Series", RotaLoc™
& RotaLoc Plus™ Cutters

SHARPENING MACHINE MODELS 10950 & 10950A



PARTS LIST

Part #	Description	Qty
01893	Screw - Drive #2 x 3/16 Stainless	2
01990	Screw SOC Set 3/8-16 x 1/4 Cup	1
02385	Screw BHC #6-32 x 1/4	1
03784	Screw SOC Set 5/15-18 x 1/2 Cup	2
03953	Rod Finger	1
03954	Clamp - Finger Rod	1
03959	Retaining Ring	1
03963	Housing Assy - Chuck	1
03964	Housing - Main	1
03966	Bronze Bushing	1
03969	Holder Tool - 3/4 Hougén Shank	1
03970	Pivot Arm	1
03971	Swivel Plate	1
03972	Scale 40-0-120	1
03974	Ball - Tooling	1
03975	Quick Adjusting Nut	1
03976	Feed Adjustment Rod	1
03977	Finger Bracket	1
03978	Adjustment Handle	1
03979	Slide - 2 Axis	1
03982	Adjustment Handle	1
03983	Borazon Cup Wheel	1
03984	Adjustment Handle	2
03985	Adjustment Handle	1
03987	Plate Assy Rod w/ Inserts	1
03989	Handle Assy	1
03991	Handle Assy	1
04103	Spacer - Plastic	2

Part #	Description	Qty
04115	Wick Oil	2
04940	Motor Base Plate	1
04941	Motor Bracket (A Model)	1
05411	Motor Plate - Upper	1
05413	Motor Assembly	1
05420	Ring-Retaining for 2-1/4 OD	1
07244	Nut-Jam 5/8-18 w/Nylon Insert	1
10541	Dowel Pin - 1/4 Dia x 1/2 Lg	2
10543	Collar - Shaft 1" Bore	1
10624	Screw SHC 1/4-20 x 3/4	6
10791	Whl Brz Grd 1" Dia	1
40252	Screw SOC Set 7/16-14	1
41004	Bar Guide 1" Dia	2
41020	Locating Finger	1
41046	Screw SHC #10-32 x 1/2	1
41049	Screw Set 1/4-20 x 1/4 Half Dog	2
41055	Screw SHC 5/16-18 x 1-3/4	2
41058	Key 1/2 x 1/2	1
41074	Washer 5/8	1
41077	Washer HD 11/16 x 1/4 x 1/8	3
41090	Retaining Ring	4
41091	Seal 1" ID	4
41092	Brng-BI 1" ID	4
41103	Wick Oil	4
41120	Washer Rubber	1
51038	Washer Flat #6	1
GG5 27L	Bosch Motor (A Model)	1