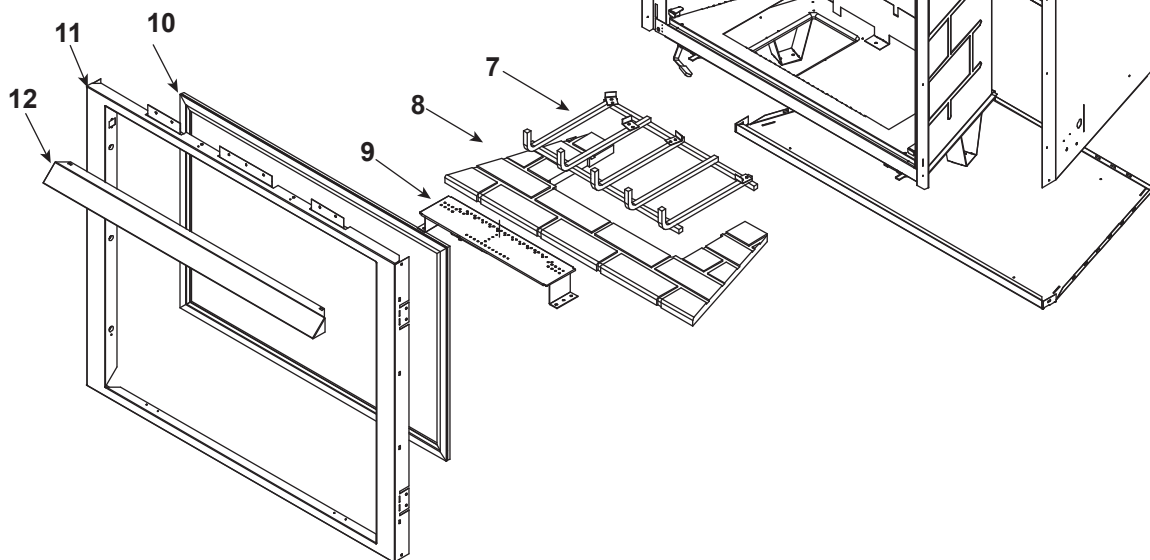
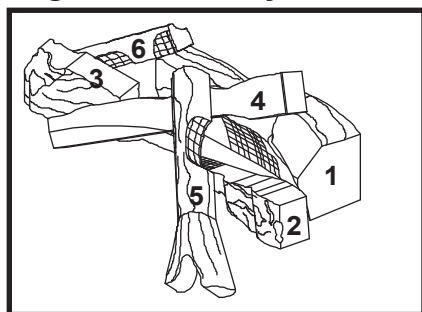


### Log Set Assembly



IMPORTANT: THIS IS DATED INFORMATION. Parts must be ordered from a dealer or distributor. **Hearth and Home Technologies does not sell directly to consumers.** Provide model number and serial number when requesting service parts from your dealer or distributor.



**Stocked  
at Depot**

| ITEM | DESCRIPTION                       | COMMENTS            | PART NUMBER   |   |
|------|-----------------------------------|---------------------|---------------|---|
|      | Log Set Assembly (Includes Grate) |                     | LOGS-CAMP     | Y |
| 1    | Log 1                             |                     | SRV530-711    |   |
| 2    | Log 2                             |                     | SRV446-702    |   |
| 3    | Log 3                             |                     | SRV446-703    |   |
| 4    | Log 4                             |                     | SRV446-704    |   |
| 5    | Log 5                             |                     | SRV446-705    |   |
| 6    | Log 6                             |                     | SRV446-706    |   |
| 7    | Log Grate Assembly                |                     | 390-360A      |   |
| 8    | Base Refractory, Metal            | 6000XLTB Only       | SRV389-338-UM |   |
| 9    | Burner NG                         |                     | 390-376A      | Y |
|      | Burner LP                         |                     | 390-375A      | Y |
| 10   | Glass Door Assembly               |                     | GLA-750TRS    | Y |
| 11   | Surround                          | No longer available | 520-130       |   |
| 12   | Hood                              |                     | SRV60-143-BK  |   |



## No one builds a better fire

## Service Parts

# 6000XLTB/6000XLT-FF

**Beginning Manufacturing Date: April 1999**

**Ending Manufacturing Date: June 2001**

**IMPORTANT: THIS IS DATED INFORMATION.** Parts must be ordered from a dealer or distributor. **Hearth and Home Technologies does not sell directly to consumers.** Provide model number and serial number when requesting service parts from your dealer or distributor.



## Stocked at Depot

| ITEM | DESCRIPTION              | COMMENTS            | PART NUMBER    |   |
|------|--------------------------|---------------------|----------------|---|
|      | Burner Orifice NG (#32A) |                     | 420-800        | Y |
|      | Burner Orifice LP (#50A) |                     | 446-801        | Y |
|      | Burner Tube              |                     | 477-301A       | Y |
|      | Decorative Front         |                     | DF-36H         |   |
|      | Fan Kit                  |                     | GFK-160A       |   |
|      | Junction Box - Pilot     |                     | 100-250A       | Y |
|      | Mesh Assembly            |                     | MESH-36B       | Y |
|      | Piezo Ignitor            |                     | 291-513        | Y |
|      | Pilot Assembly NG        |                     | 4021-736       | Y |
|      | Pilot Assembly LP        |                     | 4021-737       | Y |
|      | Thermocouple             |                     | 446-511        | Y |
|      | Thermopile               |                     | 2103-512       | Y |
|      | Pilot Tube               |                     | SRV485-301     | Y |
|      | Remote                   |                     | SMART-STAT-HNG |   |
|      | Touch Up Paint           |                     | TUPB-12        |   |
|      | Valve NG                 |                     | 060-522        | Y |
|      | Valve LP                 |                     | 060-523        | Y |
|      |                          |                     |                |   |
|      |                          |                     |                |   |
|      |                          |                     |                |   |
|      |                          |                     |                |   |
|      |                          |                     |                |   |
|      |                          |                     |                |   |
|      |                          |                     |                |   |
|      |                          |                     |                |   |
|      |                          |                     |                |   |
|      |                          |                     |                |   |
|      |                          |                     |                |   |
|      |                          |                     |                |   |
|      |                          |                     |                |   |
|      |                          |                     |                |   |
|      |                          |                     |                |   |
|      |                          |                     |                |   |
|      | Conversion Kit NG        | No longer available | NGK-6XLB       |   |
|      | Conversion Kit LP        | No longer available | LPK-6XLB       |   |
|      | Pilot Orifice NG         |                     | SRV446-505     | Y |
|      | Pilot Orifice LP         |                     | SRV446-517     | Y |
|      | Regulator NG             |                     | SRV060-518     | Y |
|      | Regulator LP             |                     | 060-519        | Y |