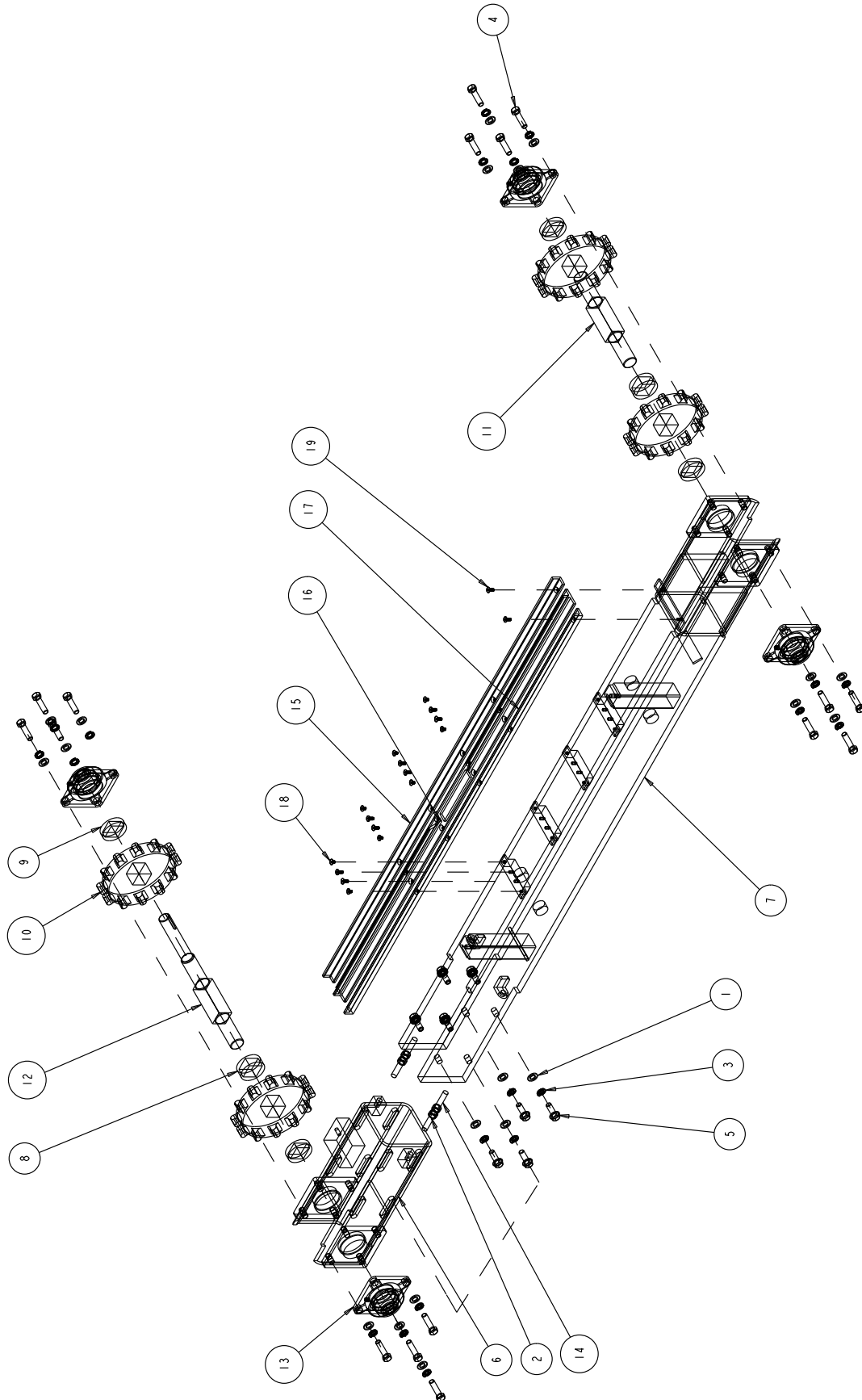


Item	Description	Part #	Qty
1	BELT, 3VX425	138172	3
2	NUT, 1 - 14 LEFT HAND	138701	1
3	SCREW, HEX HEAD, 1/4 - 20 X 5/8	150404	4
4	SCREW, 3/8 - 16 X 1 -1/4 HEX HEAD CAP	150774	8
5	WASHER, FLAT, SAE, 3/8	150923	15
6	WASHER, 1/2 SAE FLAT	150924	22
7	WASHER, LOCK, SPLIT, 3/8	150925	4
8	NUT, 1/2 - 13 HEX	151282	2
9	NUT, HEX, 1/4 - 20	151893	4
10	WASHER, FLAT, SAE, 1/4	151915	32
11	SCREW, HEX, HD, 1/4 - 20 X 3/4	152370	14
12	SCREW, 1/4 - 20 X 3/4 SOCKET HEAD CAP	152587	4
13	WASHER, LOCK, SPLIT, 1/4	152591	32
14	SCREW, 1/4 - 20 X 1/2 HEX HEAD	152608	8
15	SCREW, HEX HD, TAP, 1/4 - 20 X 1	152676	6
16	BLADE, 20"	153327	1
17	WASHER, 1/2 SPLIT LOCK	153524	20
18	SCREW, HEX HD 1/2 - 13 X 2	153533	12
19	WASHER, #10 SPLIT LOCK	153684	6
20	WASHER, FLAT, SAE, #10	154369	10
21	SCREW, 1/4 - 20 X 3.4 FLAT HEAD PHILLIPS MACHINE	154657	6
22	NUT, HEX 10 - 32	156269	6
23	KNOB, TRI PLASTIC NO LOGO, 1" LG.	156770-01-NL	2
24	SCREW, TRUSS 10 - 32 X 3/4	157526	1
25	ELBOW, 90 DEG. STREET, 3/8, NYLON	157895	1
26	VALVE, BALL MINI, PVC, 3/8 X 3/8	157898	1
27	SCREW, 1/2 - 13 X 1 -1/2 HEX FLANGE HEAD, RIGHT HAND	160819	8
28	PAN HEAD PHILLIPS 8 32 X 3/4" SEALING	166257	12
29	INTERLOCK SWITCH	168000	1
30	ACTUATOR	168007	1
31	BLADE HOUSING	170029	1
32	TRAY	170030	1
33	HOLDER, GUIDE	170036	1
34	HOLDER, FINGER	170037	1
35	BASE, WELDMENT	170038	1
36	PLATE, MOTOR MOUNT	170041	1
37	SPACER	170042	4
38	STUD, 1 - 1/8 - 12 X 13.75"	170059	2
39	GUIDE, ADJUSTABLE	170060	1
40	MOTOR	170063	1
41	BLADE FLANGE	170064	1
42	BLADE, SHAFT	170065	1
43	FLANGE BLADE NUT	170066	1

<b>Item</b>	<b>Description</b>	<b>Part #</b>	<b>Qty</b>
44	BEARING, BLADE SHAFT	170067	2
45	WINDOW, MASONATOR	170069	1
46	GASKET, WINDOW	170070	1
47	ARBOR HOUSING	170074	1
48	COVER, ARBOR HOUSING	170075	1
49	NUT, HEX 1 - 1/8 - 12	170104	3
50	SPACER	170106	2
51	TRACK SUPPORT, BOTTOM	170113	1
52	TANK, WATER	170116	1
53	VALVE, BALL 2" NPT FEMALE	170118	1
54	FINGER	170119	7
55	STUD, 1/2 - 13 X 3 - 1/2	170127	2
56	WATER MANIFOLD	170167	1
57	ASSEMBLY, WATER DELIVERY	170168	1
58	HANDLE, TEE CAM LATCH	170170	1
59	PIPE NIPPLE 3/8 MNPT 2-1/2	170174	1
60	MALE PIPE BRANCH TEE 3/8 MNPT TO 3/8 BARB	170176	1
61	SOLENOID VALVE 3/8	170177	1
62	PAD, TANK	170224	2
63	COVER, ARBOR HOUSING	170225	1
64	SHCS 1/2 - 13 X 2 - 3/4	170226	8
65	COVER	170227	1
66	GEAR REDUCER, GROVE 110.9: 1.0	170246	1
67	MOTOR, 1/3 HP	170247	1
68	TORQUE ARM KIT	170250	1
69	ADAPTOR, MALE PIPE 1/4 NPTF	170260	2
70	EXIT, WATER MANIFOLD	170261	1
71	ASSY, LOC - LINE	170262	1
72	ELECTRONICS CABINET	170263	1
73	ELECTRICAL CONTROL PANEL	170264	1
74	E-STOP BOX	170265	1
75	ASSEMBLY, TRACK SUPPORT	170318	1
76	SHCS, 10 - 32 X 2 - 1/4	170318	1
77	SHCS, 3/8 - 16 X 3/8	170331	7
78	SHEAVE, MARTIN 3 3V 600 TB	170379	2
79	BUSHING, TAPER LOCK 2517, 1 - 5/8" BORE	170380	1
80	BUSHING, TAPER LOCK 2517, 1 - 3/4" BORE	170381	1
81	KNOB, ADJUSTMENT	170382	1
82	ASSY, CHAIN, HABA	170385	2



Item	Description	Part #	Qty
1	WASHER, 1/2 SAE FLAT	150924	24
2	NUT, 1/2 - 13 HEX	151282	4
3	WASHER, 1/2 SPLIT LOCK	153524	24
4	SCREW, HEX HD 1/2 - 13 X 2	153533	16
5	SCREW, 1/2 - 13 X 1 - 1/2 HEX FLANGE HEAD, RIGHT HAND	160819	8
6	SPROCKET SUPPORT WELDMENT	170043	1
7	TRACK SUPPORT WELDMENT	170044	1
8	SPACER	170061	2
9	SPACER	170062	4
10	SPROCKET, HABA	170068	4
11	SHAFT, TRACK	170071	1
12	SHAFT, TRACK	170072	1
13	FLANGED BEARING, 1 - 3/8"	170073	4
14	ROD, THREADED, 1/2 - 13 X 5.00	170105	2
15	TACK SUPPORT, TOP INNER	170107	1
16	TRACK SUPPORT, TOP CENTER	170108	1
17	TACK SUPPORT, TOP OUTER	170126	1
18	FHCS, 1/4 - 20 X 3/8"	170319	8
19	FHCS, 1/4 - 20 X 5/8"	170320	10