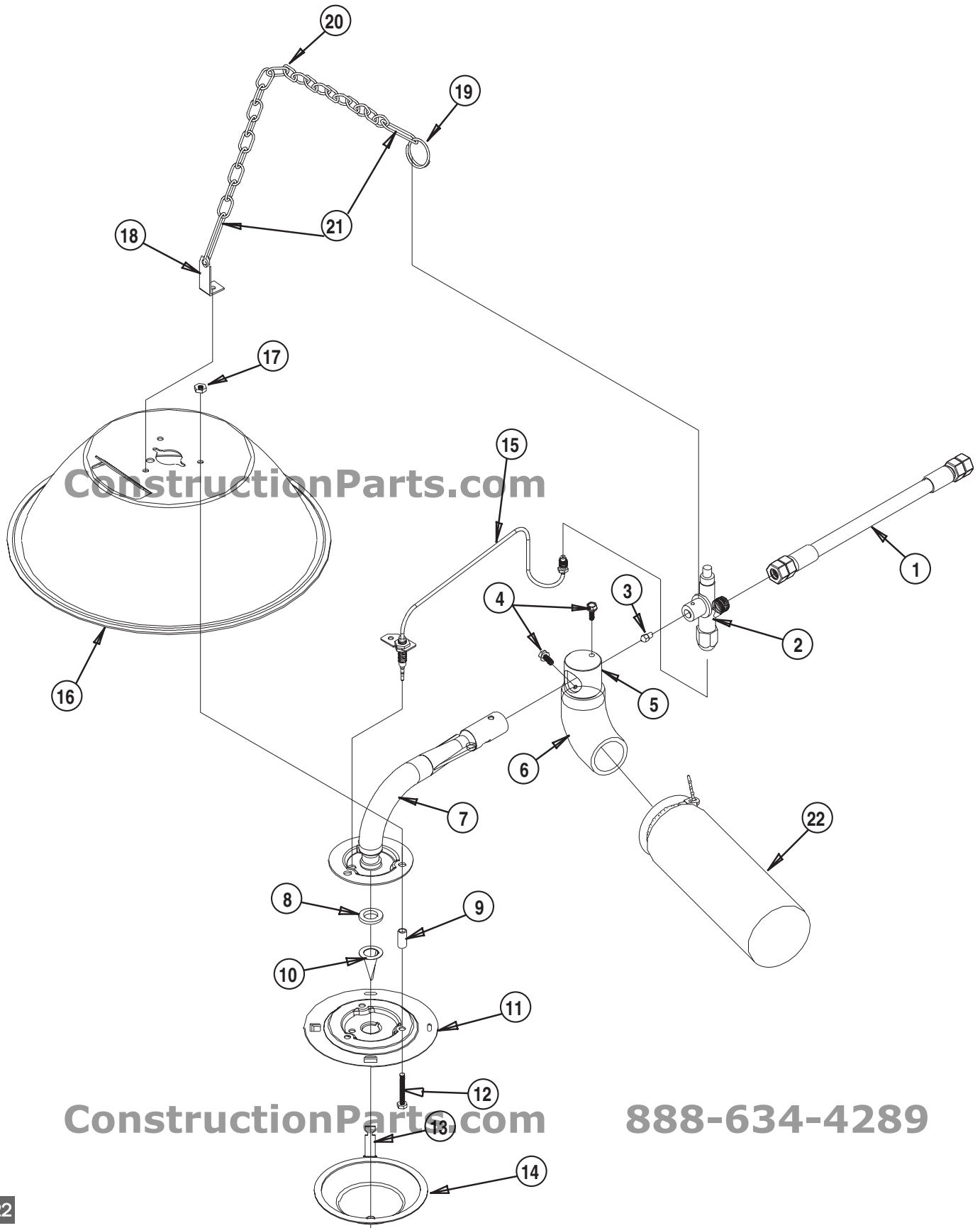


Parts Identification

ConstructionParts.com
Infraconic I-5 M
Models I-5A/I-5B

888-634-4289

PARTS SCHEMATIC



ConstructionParts.com

888-634-4289

PARTS LIST

Item	Description	Part No.
1	Hose,6 ft. Male Quick Coupling End	21333
	10 ft. Male Quick Coupling End	21330
	15 ft. Male Quick Coupling End	21332
	6 ft. Standard (Rigid by Swivel)	20495
	10 ft.Standard(Rigid by Swivel)	20496
	15 ft. Standard (Rigid by Swivel)	20498
	6 ft. Double Swivel Ends	20499
	6 ft. Male End by Swivel w/ Quick Coupling Kit	21334
	10 ft. Male End by Swivel w/ Quick Coupling Kit	21346
	15 ft Male End by Swivel w/ quick Coupling Kit	21347
2	Pilot Safety Control Valve Assembly (LP Gas)	24004
	(Consists of items 2, 3,and 19) (Natural Gas)	24005
3	Orifice (LP Gas)	22182
	(Natural Gas)	22183
4	Screw,Filter Holder	06658
5	Filter Holder	23826
6	Elbow, Filter	24166
7	Venturi Tube	24006
	Kit,Combustion Cone (Consists of items 8, 9, 10, 12, 13, 14, and 17)	22188
8	Gasket,Burner	22601
9	Spacer	09568
10	Inner Cone	22599
11	Burner Plate	24007
12	Bolt	23636
13	Truss Clip	09559
14	Outer Cone	22600
15	Thermocouple w/bracket and nut	22181
16	Canopy	24008
17	Nut	09578
18	Bracket,Chain Hanging	24009
19	Ring, Chain Hanging	09620
20	Chain Assembly	22185
21	Link, chain Adjustment	09697
22	Filter with Tie Wrap	24118