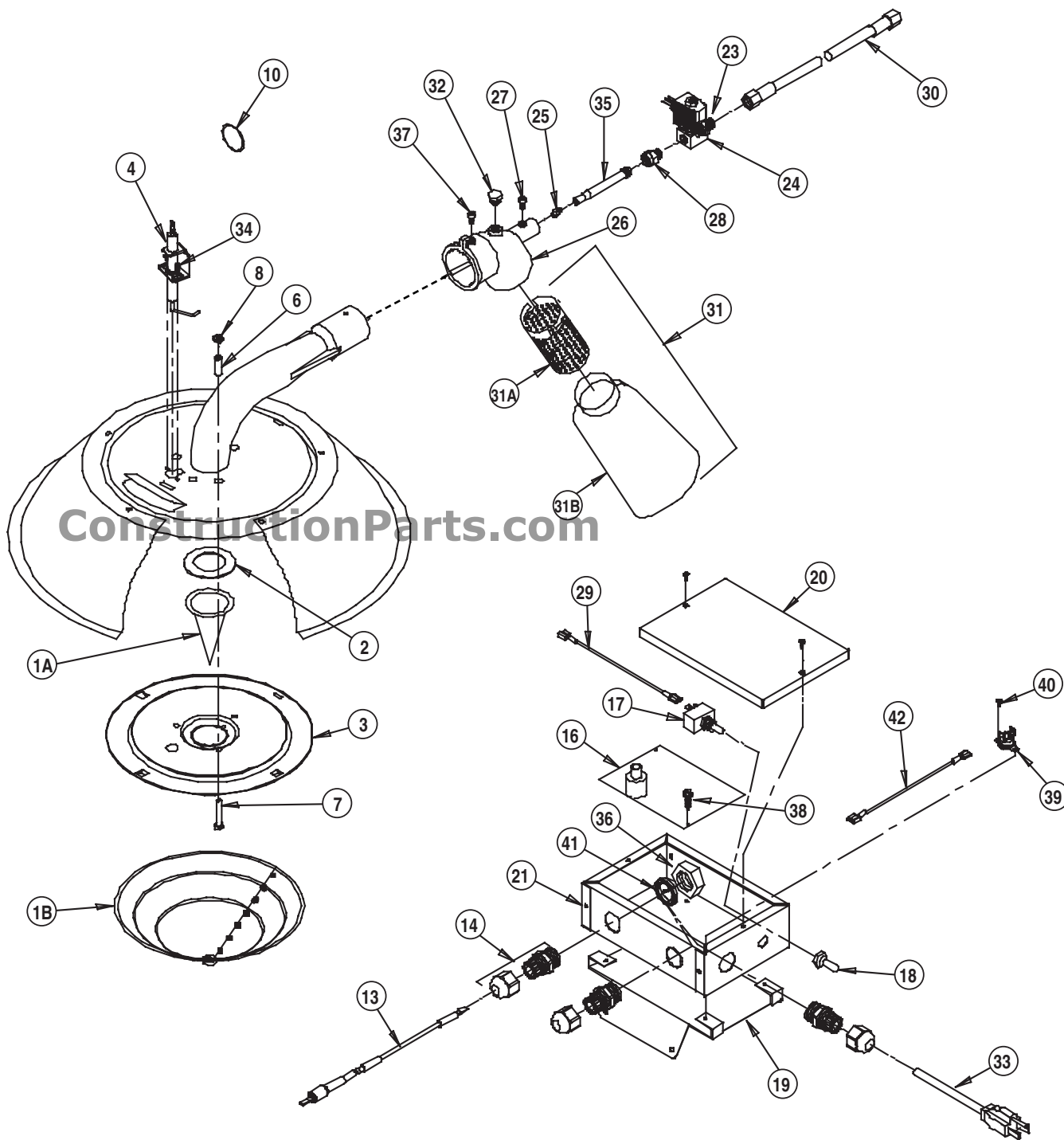


Parts Identification

Infraconic I-17 SL
Model I-17C

888-634-4289

PARTS SCHEMATIC



ConstructionParts.com

888-634-4289

PARTS LIST

Item	Description	Part Number
1A	Inner Cone	09585
1B	Outer Cone	09588
	Combustion Cone Kit with Gasket	21087
2	Gasket	09586
3	Plate, Burner	21953-03
4	Igniter	22612
6	Spacer	09568
7	Screw 10-32 x 1 1/2	23636
8	Nut 10-32	09578
10	Key Ring	09620
13	Lead, Igniter w/ Boot	22703
14	Connector, Liquid Tight	08948
16	Control, Direct Spark Ignition	22715
17	Switch, On/Off	22714
18	Boot, On/Off Switch	09916
19	Bracket, Control Box	22661
20	Control Box Cover w/ Gasket	23180
21	Control Box Bottom	23179
22	Bushing	01544
23	Adapter, Hose	23789
24	Valve, Gas Control w/ Electrical Leads and Screen	23729
25	Orifice, Burner	Propane Gas 21562 Natural Gas 09776
26	Injector Body w/ Air Register Plate	Propane Gas 21838 Natural Gas 21837
27	Retaining Screw for Injector Tube	09572
28	Adapter 1/8 NPT x 1/8 BSP	23707
29	Lead, Black, On/Off Switch to Ignition Control	22610
30	Hose, Gas 1/4 in. x 6 ft. Rigid x Swivel, Poultry	20495
	1/4 in. x 10 ft. Rigid x Swivel, Poultry	20496
	1/4 in. x 12 ft. Rigid x Swivel, Poultry	20497
	1/4 in. x 6 ft. Swivel Both Ends, Swine	20499
	1/4 in. x 10 ft. Swivel Both Ends, Swine	20242
	1/4 in. x 15 ft. Swivel Both Ends, Swine	20500
31	Filter Kit	20427
31A	Sleeve	20321
31B	Filter	20429
32	Plug	20361
33	Cord, Power	22704
34	Screw, Igniter Mounting	06658
35	Tube, Injector	09597
36	Lock Nut	08948
37	Screw, Injector Body	09575
38	Screw, Direct Spark Ignition	02330
39	High Limit Switch, Manual Reset	23148
40	Screw, High Limit Switch	22783
41	Gasket, Liquid Tight	22565
42	Wire, High Limit Switch	22610
43	Quick Coupling Kit, Female Coupling and Shut-Off (Not Illustrated)	21335
	Consisting Of:	
	Shut-Off Valve	05548
	Nipple, 1/4 in. Close	01142
	Coupling, Quick Disconnect	21328
	Bushing, 1/2 x 1/4	01519
44	Kit, 1/8 NPT Fitting (Not Illustrated)	23406