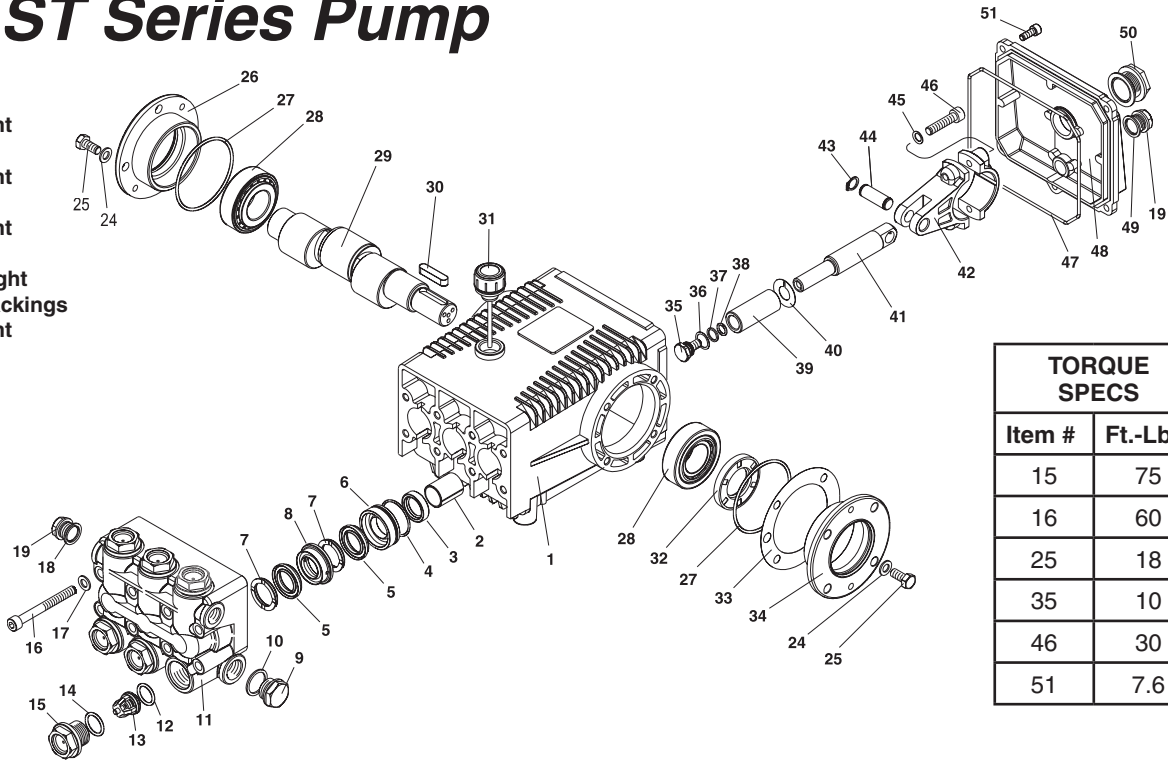




ST Series Pump

- 5-1424 ST 4035 Right
- 5-1425 ST 4035 Left
- 5-1426 ST 4040 Right
- 5-1427 ST 4040 Left
- 5-1428 ST 5030 Right
- 5-1429 ST 5030 Left
- 5-1430 ST 5030H Right
High Heat Packings
- 5-1432 ST 6035 Right
- 5-1433 ST 6035 Left



| TORQUE SPECS | |
|--------------|----------|
| Item # | Ft.-Lbs. |
| 15 | 75 |
| 16 | 60 |
| 25 | 18 |
| 35 | 10 |
| 46 | 30 |
| 51 | 7.6 |

PARTS LIST

| ITEM | PART NO. | DESCRIPTION | QTY | ITEM | PART NO. | DESCRIPTION | QTY | ITEM | PART NO. | DESCRIPTION | QTY |
|------|---------------|-----------------------------------|-----|------|---------------|-------------------------------|-----|------|---------------|----------------------------|-----|
| 1 | 70-020293 | Crankcase | 1 | 13* | See Kit Below | Valve Assembly | 6 | 35* | 70-180000 | Plunger Bolt | 3 |
| 2 | 70-060200 | Plunger Guide | 3 | 14* | 70-060165 | O-Ring Ø2.62 x 20.29 | 6 | 36* | 70-140013 | Copper Spacer | 3 |
| 3* | See Kit Below | Plunger Oil Seal | 3 | 15 | 70-160130 | Valve Plug | 6 | 37* | 70-060102 | O-Ring Ø1.78 x 10.82 | 3 |
| 4* | 70-060108 | O-Ring Ø1.78 x 31, 47 | 3 | 16 | 70-180136 | Manifold Stud Bolt | 8 | 38* | 70-000902 | Teflon Ring | 3 |
| 5* | See Kit Below | "V" Seal, Plunger | 6 | 17 | 70-140301 | Washer | 8 | 39* | See Kit Below | Plunger (4035, 4040, 6035) | 3 |
| | See Kit Below | "V" Seal Plunger | 6 | 18 | 70-060306 | Copper Washer 3/8" | 1 | | See Kit Below | Plunger (5030) | 3 |
| 6* | 70-120107 | Pressure Ring (4035, 4040, 6035) | 3 | 19 | 70-160117 | Brass Plug 3/8" | 1 | 40* | 70-140014 | Copper Spacer | 3 |
| | 70-120108 | Pressure Ring (5030) | 3 | 24 | 70-140001 | Washer | 8 | 41 | 70-000300 | Plunger Rod | 3 |
| 7* | 70-030000 | Support Ring (4035, 4040, 6035) | 6 | 25 | 70-180203 | Hexagonal Screw | 8 | 42 | 70-010000 | Connecting Rod | 3 |
| | 70-030001 | Support Ring (5030) | 6 | 26 | 70-050054 | Closed Bearing Housing | 1 | 43 | 70-150000 | Snap Ring | 6 |
| 8* | 70-030012 | Intermed. Ring (4035, 4040, 6035) | 3 | 27 | 70-060100 | O-Ring Ø2.62 x 71.12 | 2 | 44 | 70-150200 | Connecting Rod Pin | 3 |
| | 70-030013 | Intermed. Ring (5030) | 3 | 28 | 70-020004 | Roller Bearing, Tapered | 2 | 45 | 70-140103 | Spring Washer | 6 |
| 9 | 70-160120 | Brass Plug, 1/2" | 1 | 29 | 70-000487 | Crankshaft (4040, 5030, 6035) | 1 | 46 | 70-180101 | Connecting Rod Screw | 6 |
| 10 | 70-060307 | Copper Washer 1/2" | 1 | | 70-000488 | Crankshaft (4035) | | 47 | 70-060185 | O-Ring Ø2.62 x 152.07 | 1 |
| 11 | 70-160217 | Manifold Head | 1 | 30 | 70-020604 | Crankshaft Key | 1 | 48 | 70-020351 | Crankcase Cover | 1 |
| 12* | 70-060119 | O-Ring Ø2.62 x 17.13 | 6 | 31 | 70-160007 | Oil Dip Stick | 1 | 49 | 70-060302 | Gasket, G3/8 | 1 |
| | | | | 32 | 70-000100 | Crankshaft Seal | 1 | 50 | 70-070005 | Sight Glass G3/4 | 1 |
| | | | | 33 | 70-030100 | Shim | 2 | 51 | 70-180112 | Cover Screw | 5 |
| | | | | 34 | 70-050053 | Bearing Housing | 1 | | | | |

* Part available in kit (See below)

REPAIR KITS

| REPAIR KIT NUMBER | 70-260020 | 70-260110* | 70-261211 | 70-260811** | 70-260024 | 70-260112 | 70-260007 | 70-260023 |
|--------------------------------------|------------------------------|-------------------|--------------------------------------|----------------------------|------------------------|------------------------|----------------------------|-------------------------------|
| KIT DESCRIPTION | Plunger Seal 4040, 6035 4035 | Plunger Seal 5030 | Complete Seal Packing 4040 6035 4035 | Complete Seal Packing 5030 | Plunger 4040 6035 4035 | Plunger 5030 | Complete Valve (all pumps) | Plunger Oil Seals (all pumps) |
| ITEM NUMBERS INCLUDED | 4, 5, 7 | 4, 5, 7 | 3, 4, 5, 6, 7, 8 | 3, 4, 5, 6, 7, 8 | 35, 36, 37, 38, 39, 40 | 35, 36, 37, 38, 39, 40 | 12, 13, 14 | 3 |
| NUMBER OF CYLINDERS KIT WILL SERVICE | 3 | 3 | 1 | 1 | 1 | 1 | 6 | 3 |

* High Heat, Use 70-262922 5030H/R

** High Heat, Use 70-26292 5030H/R

#97-04532 Rev 5/07