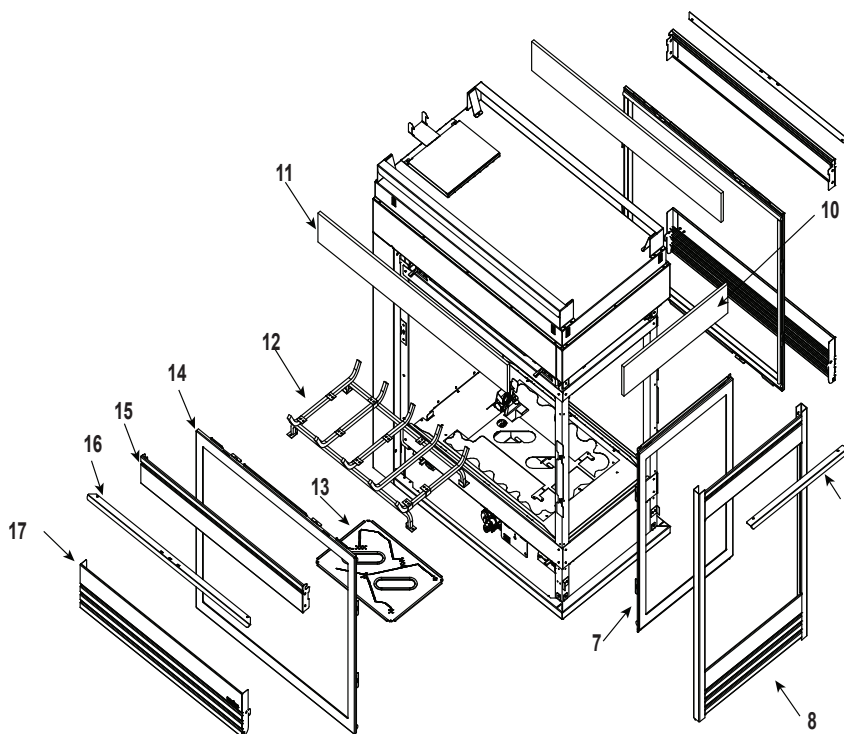


Log Set Assembly



IMPORTANT: THIS IS DATED INFORMATION. Parts must be ordered from a dealer or distributor. **Hearth and Home Technologies does not sell directly to consumers.** Provide model number and serial number when requesting service parts from your dealer or distributor.



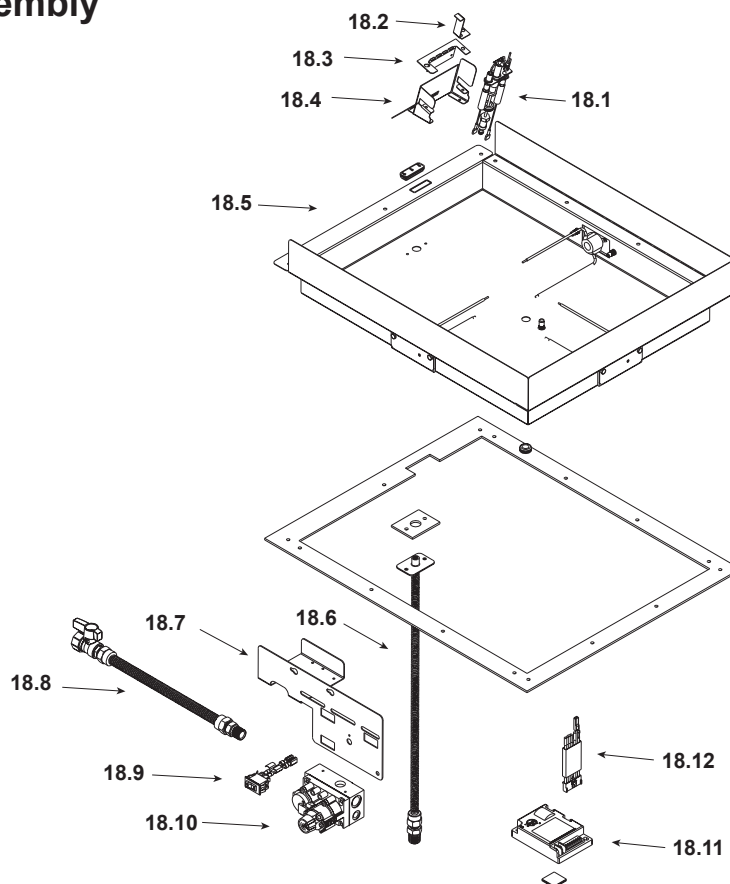
**Stocked
at Depot**

ITEM	DESCRIPTION	COMMENTS	PART NUMBER	
	Log Set Assembly		LOGS-MSB	Y
1	Log 1	No longer available, Must order complete assembly	SRV2039-701	
2	Log 2		SRV2039-703	
3	Log 3		SRV2039-700	
4	Log 4		SRV2039-702	
5	Log 5		SRV2039-705	
6	Log 6		SRV2039-704	
7	Glass Door Assembly -End		GLA-MS	Y
8	Louvers with Mesh -End Panel		MS-LOUVERS-EP	
9	Hood End, black		SRV2006-194	
10	Non-combustible board -End		2006-137	
11	Non-combustible board -Side		2006-136	
12	Grate Assembly		2039-012	
13	Burner NG, LP	Metal	2039-006	Y
	Burner for LOGS-Upgrade	Fiber	2005-006	Y
14	Glass Door Assembly -Side		GLA-6TROC	Y
15	Louver, Top		SRV2040-005-BK	
16	Hood Side, Black		SRV2005-190	
17	Louver, Bottom		SRV2040-004-BK	

Additional service part numbers appear on following page.

7/19

#18 Valve Assembly



IMPORTANT: THIS IS DATED INFORMATION. Parts must be ordered from a dealer or distributor. **Hearth and Home Technologies does not sell directly to consumers.** Provide model number and serial number when requesting service parts from your dealer or distributor.



**Stocked
at Depot**

ITEM	DESCRIPTION	COMMENTS	PART NUMBER	
18.1	Pilot Assembly NG		SRV4021-730	Y
	Pilot Assembly LP		SRV4021-731	Y
	Pilot Tube		SRV446-301	Y
18.2	Ground Strap		385-512	
18.3	Pilot Support Arm		385-120	
18.4	Pilot Bracket		2005-118	
18.5	Ember Box Assembly		SRV2005-114	Y
18.6	Flexible Gas Connector		2005-009	Y
18.7	Valve Bracket		2005-120	
18.8	Flex Ball Valve Assembly		SRV302-320	Y
18.9	On/Off Switch Assembly		060-521A	Y
18.10	Valve NG		750-500	Y
	Valve LP		750-501	Y
18.11	Module		593-592	Y
18.12	Module Wire Assembly		SRV593-590	Y

Additional service part numbers appear on following page.



No one builds a better fire

Service Parts

PIER-HVB-IPI

Beginning Manufacturing Date: Aug 2003
Ending Manufacturing Date: Dec 2008

IMPORTANT: THIS IS DATED INFORMATION. Parts must be ordered from a dealer or distributor. **Hearth and Home Technologies does not sell directly to consumers.** Provide model number and serial number when requesting service parts from your dealer or distributor.



Stocked at Depot

ITEM	DESCRIPTION	COMMENTS	PART NUMBER	at Depot
	3V Adaptor Plug		SRV593-593	Y
	Battery Pack		SRV593-594	Y
	Bracket Junction box		2005-173	
	Ember Mesh Assembly		2006-008	
	Fan Kit		GFK-160A	
	Fiber Glass Rope		060-455	
	Flue Restrictor		385-128	
	Glass Latch Assembly	Pkg of 2	386-122A/2	Y
	Junction Box		SRV4021-013	Y
	Lava Rock		2005-790	
	Mesh Assembly		SRV530-382A	Y
	Mineral Wool		050-721	
	Orifice NG (#33C)		582-833	Y
	Orifice LP (#50C)		582-850	Y
	Remote		SMART-STAT-HNG	
	Touch Up Paint		TUP-GBK-12	
	Conversion Kit NG		NGK-MS	Y
	Conversion Kit LP		LPK-MS	Y
	Pilot Orifice NG		SRV446-505	Y
	Pilot Orifice LP		SRV446-517	Y
	Regulator NG		SRVNGK-DXV	Y
	Regulator LP		SRVLPK-DXV	Y