



Operator's Manual  
**HPS09**  
**Pellet Stove**



## WARNING

PLEASE READ THIS ENTIRE MANUAL BEFORE INSTALLATION AND USE OF THIS PELLET FUEL-BURNING ROOM HEATER. FAILURE TO FOLLOW THESE INSTRUCTIONS COULD RESULT IN PROPERTY DAMAGE, BODILY INJURY OR EVEN DEATH.

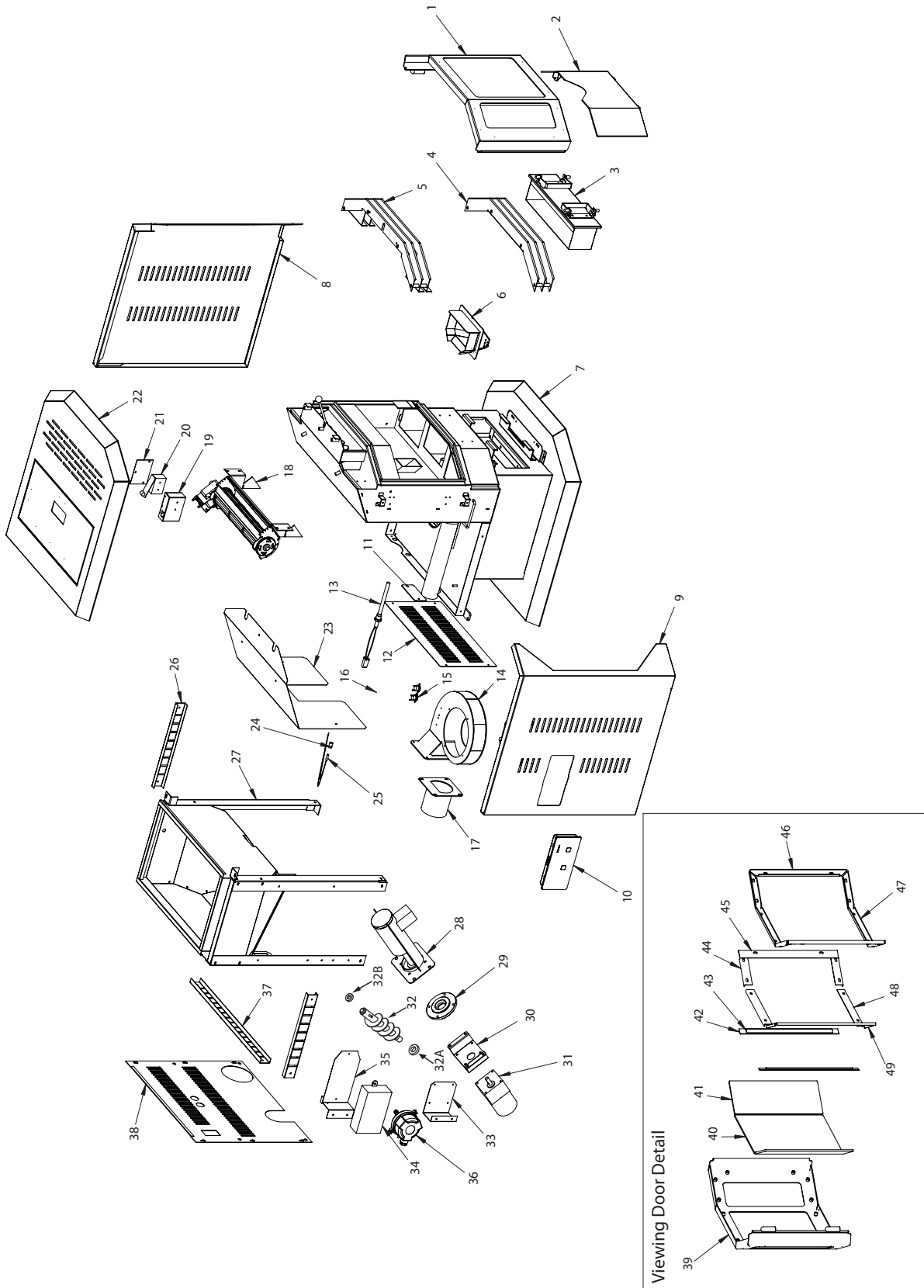


## CAUTION DO NOT DISCARD!

- IMPORTANT OPERATING AND MAINTENANCE INSTRUCTIONS INCLUDED.
- SAVE THESE INSTRUCTIONS AND LEAVE THIS MANUAL WITH ANY PARTY RESPONSIBLE FOR USE AND OPERATION.

## CAUTION

CONTACT LOCAL BUILDING OR FIRE OFFICIALS ABOUT RESTRICTIONS AND INSTALLATION INSPECTION REQUIREMENTS FOR YOUR AREA.



KEY #	PART #	DESCRIPTION
1	720259	DOOR ASSEMBLY
2	720260	ASH PAN COVER
3	720261	ASH PAN
4	720262	GRILL BOTTOM
5	720263	GRILL TOP
6	720264	FIREPOT
7	720265	FIREBOX
8	720266	RIGHT SIDE PANEL
9	720267	LEFT SIDE PANEL
10	720101	CONTROL BOARD CASTLE
11	720268	EXHAUST CLEAN OUT PLATE
12	720269	LOWER BACK PANEL
13	720102	IGNITER
14	720270	EXHAUST BLOWER HOUSING
15	720103	SWITCH SNAP DISC 52 DEGREE CELSIUS
16	720110	EXHAUST BLOWER
17	720271	SQUARE TO ROUND TRANSITION
18	720104	BLOWER CONVECTION
19	720272	COVER HOPPER SWITCH
20	720105	SWITCH HOPPER LID
21	720273	COVER PLATE HOPPER SWITCH
22	720274	STOVE TOP
23	720275	HEAT SHIELD
24	720276	RTD MOUNT
25	720106	RTD OVERTEMP SENSOR 92 DEGREE CELSIUS
26	720277	SIDE WIRE CHANNEL
27	720278	HOPPER SUPPORT
28	720120	AUGER HOUSING
29	720222	LOWER COVER PLATE AUGER
30	720223	AUGER MOTOR MOUNT PLATE
31	720107	GEARMOTOR

KEY #	PART #	DESCRIPTION
32	720219	WELD ASSEMBLY AUGER
32A	720220	AUGER BEARING LOWER
32B	720221	AUGER BEARING UPPER
33	720279	BRACKET VACUUM SWITCH
34	720108	INTERFACE MODULE CASTLE
35	720280	BRACKET INTERFACE MODULE
36	720109	SWITCH VACUUM
37	720281	BACK WIRE CHANNEL
38	720282	UPPER BACK PANEL

**GLASS DOOR COMPONENTS**

KEY #	PART #	DESCRIPTION
39	720240	DOOR FRAME
40	720249	MIDDLE GLASS
41	720250	SIDE GLASS
42	720251	GLASS POST
43	720252	GLASS POST FLASHING
44	720253	GLASS CLIP HORIZONTAL UPPER SIDE GLASS
45	720254	GLASS CLIP VERTICAL
46	720255	GLASS FRAME VERTICAL
47	720256	GLASS FRAME HORIZONTAL
48	720257	GLASS CLIP HORIZONTAL MIDDLE GLASS
49	720258	GLASS CLIP HORIZONTAL LOWER SIDE GLASS