

PELLET STOVE

OPERATOR'S MANUAL

Installation and Operation

Castle model HPS09

CAUTION



DO NOT DISCARD!

SAVE THESE INSTRUCTIONS

- Important operating and maintenance instructions included.
- Read, understand and follow these instructions for safe installation and operation.
- Leave this manual with party responsible for use and operation.

WARNING



Please read this entire manual before installation and use of this pellet fuel-burning room heater. Failure to follow these instructions could result in property damage, bodily injury or even death.

- Do not store or use gasoline or other flammable vapors and liquids in the vicinity of this or any other appliance.
- Do not overfire - If any external part starts to glow, you are overfiring. Reduce feed rate. Overfiring will void the warranty.
- Comply with all minimum clearances to combustibles as specified. Failure to comply may cause a house fire.

WARNING



HOT! DO NOT TOUCH. SEVERE BURNS MAY RESULT. CLOTHING IGNITION MAY RESULT.



Glass and other surfaces are hot during operation and cool down.

- Keep children away.
- CAREFULLY SUPERVISE children in same room as appliance.
- Alert children and adults to hazards of high temperatures.
- DO NOT operate with protective barriers open or removed.
- Keep clothing, furniture, draperies and other combustibles away.

CAUTION

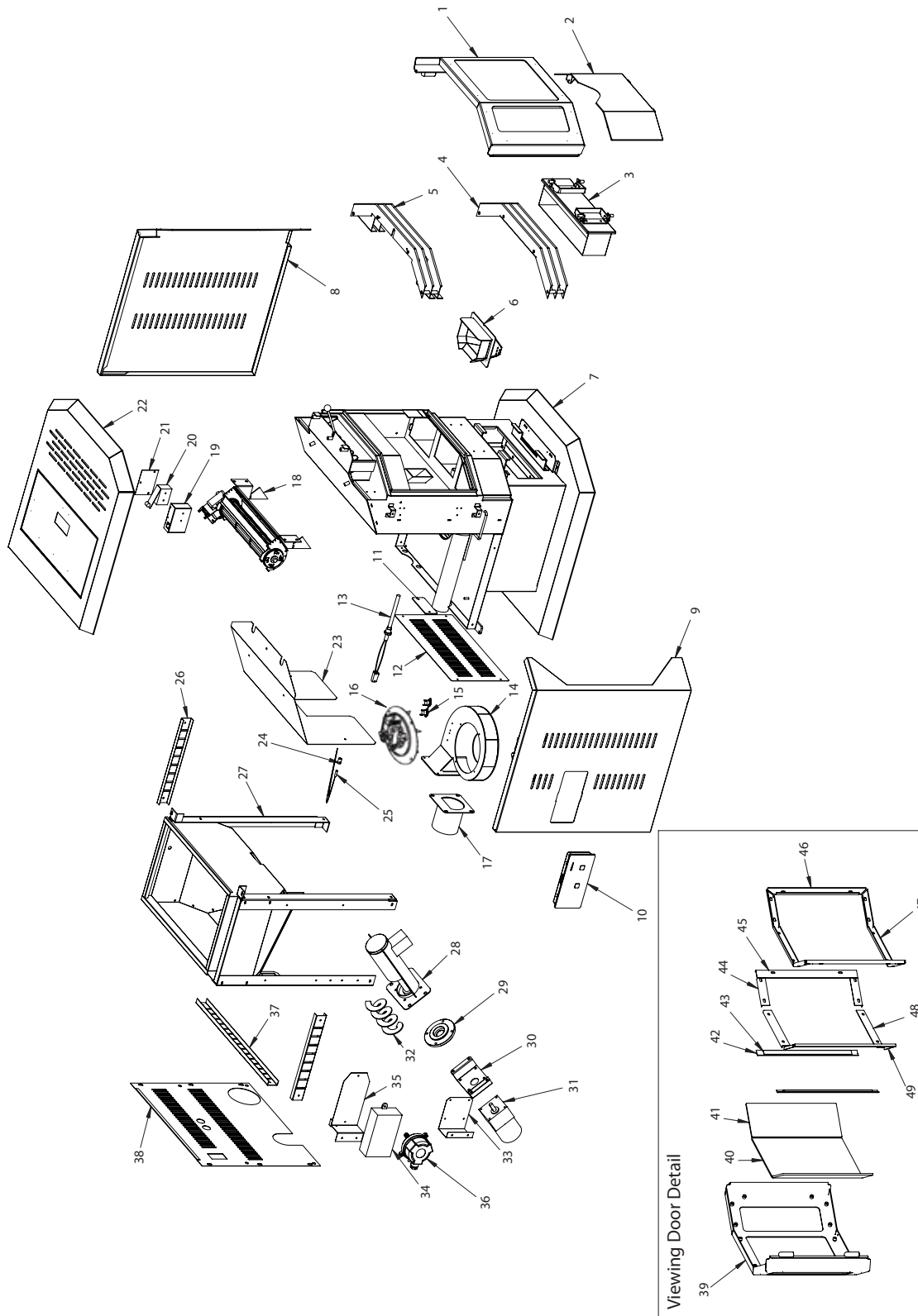
Check building codes prior to installation. Contact the regulating authority prior to installation to determine the need for a permit.

- Installation **MUST** comply with local, regional, state and national codes and regulations.
- Consult local building or fire officials about restrictions and installation inspection requirements in your area.

CAUTION

Tested and approved for pellet fuel. Burning any other type of fuel voids warranty.

MAIN ASSEMBLY PARTS





MAIN ASSEMBLY PARTS

KEY #	PART #	DESCRIPTION
1	HP20-04-00	ASSEMBLY GLASS DOOR
2	HP20S-01-06-01	ASH PAN COVER
3	HP20S-01-05-00	ASH PAN
4	HP20-07-00	GRILL BOTTOM
5	HP20-06-01	GRILL TOP
6	HP20-01-14-00	FIREPOT
7	HP20S-01-00	FIREBOX
8	HP20S-04-00	RIGHT SIDE PANEL
9	HP20S-05-00	LEFT SIDE PANEL
10	720101	CONTROL BOARD CASTLE
11	HP20-01-09	EXHAUST CLEAN OUT PLATE
12	HP20S-01-02-01-04	LOWER BACK PANEL
13	720102	IGNITER
14	HP20S-01-01-02-02-02-03-00	EXHAUST BLOWER HOUSING
15	720103	SWITCH SNAP DISC 52 DEGREE CELSIUS
16	720110	EXHAUST BLOWER
17	HP20S-01-07-00	SQUARE TO ROUND TRANSITION
18	720104	BLOWER CONVECTION
19	HP20-03-02-01	COVER HOPPER SWITCH
20	720105	SWITCH HOPPER LID
21	HP20-03-02-02	COVER PLATE HOPPER SWITCH
22	HP20-03-01-00	STOVE TOP
23	HP20S-01-08-01	HEAT SHIELD
24	HP20-01-12-02	RTD MOUNT
25	720106	RTD OVERTEMP SENSOR 92 DEGREE CELSIUS
26	HP20-02-04	SIDE WIRE CHANNEL
27	HP20S-03-01-00	HOPPER SUPPORT
28	HP20-02-02-00	AUGER HOUSING
29	HP20-02-02-02-02	INBOARD AUGER PLATE
30	HP20-02-02-04	AUGER TORQUE PLATE

KEY #	PART #	DESCRIPTION
31	720107	GEARMOTOR
32	HP20-02-02-03-02	AUGER
33	HP20-02-06	BRACKET VACUUM SWITCH
34	720108	INTERFACE MODULE CASTLE
35	HP20-02-05	BRACKET INTERFACE MODULE
36	720109	SWITCH VACUUM
37	HP20-02-03	BACK WIRE CHANNEL
38	HP20S-06-01	UPPER BACK PANEL

GLASS DOOR COMPONENTS		
KEY #	PART #	DESCRIPTION
39	HP20-04-01-00	DOOR
40	HP20-04-10	MIDDLE GLASS
41	HP20-04-09	SIDE GLASS
42	HP20-04-08-01	GLASS POST
43	HP20-04-08-02	GLASS POST FLASHING
44	HP20-04-03	GLASS CLIP HORIZONTAL UPPER SIDE GLASS
45	HP20-04-05	GLASS CLIP VERTICAL
46	HP20-04-07	GLASS FRAME VERTICAL
47	HP20-04-06	GLASS FRAME HORIZONTAL
48	HP20-04-02	GLASS CLIP HORIZONTAL MIDDLE GLASS