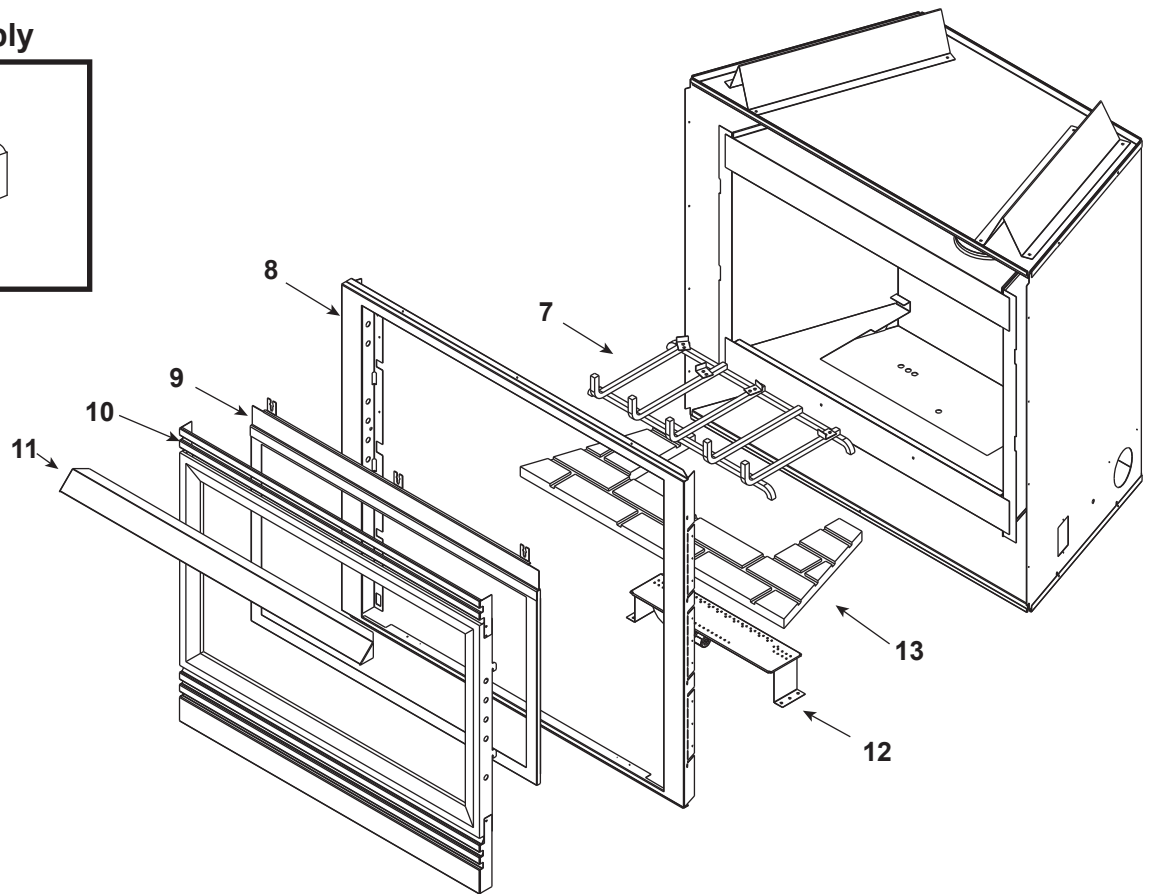
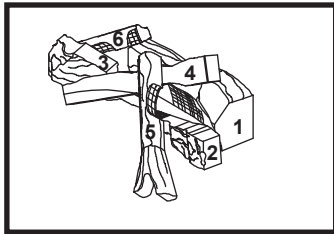


Log Set Assembly



IMPORTANT: THIS IS DATED INFORMATION. Parts must be ordered from a dealer or distributor. **Hearth and Home Technologies does not sell directly to consumers.** Provide model number and serial number when requesting service parts from your dealer or distributor.



**Stocked
at Depot**

ITEM	DESCRIPTION	COMMENTS	PART NUMBER	
	Log Set Assembly (Grate Assembly Included)		LOGS-CAMP	Y
1	Log 1		SRV530-711	
2	Log 2		SRV446-702	
3	Log 3		SRV446-703	
4	Log 4		SRV446-704	
5	Log 5		SRV446-705	
6	Log 6		SRV446-706	
7	Grate Assembly		446-360A	
8	Surround	No longer available	414-130	
9	Glass Door Assembly		GLA-6XLS	Y
10	Decorative Front		DF-36H	
11	Hood		SRV60-143-BK	
12	Burner NG		446-176A	Y
	Burner LP		446-175A	Y
13	Refractory		SRV446-338	



Service Parts

6000XLS-NF

No one builds a better fire

Beginning Manufacturing Date: June 1997
Ending Manufacturing Date: Sept 1999

IMPORTANT: THIS IS DATED INFORMATION. Parts must be ordered from a dealer or distributor. **Hearth and Home Technologies does not sell directly to consumers.** Provide model number and serial number when requesting service parts from your dealer or distributor.



Stocked
at Depot

ITEM	DESCRIPTION	COMMENTS	PART NUMBER	
	Fan Kit		GFK-160A	
	Flex Ball Valve Assembly		SRV302-320	Y
	High Limit switch		092-531	Y
	Junction Box		100-250A	Y
	Mesh Assembly		MESH-36B	Y
	Mineral Wool		050-721	
	Orifice NG (#32A)		420-800	Y
	Orifice LP (#50A)		446-801	Y
	Piezo Ignitor		291-513	Y
	Pilot Assembly NG		446-510A	Y
	Pilot Assembly LP		446-511A	
	Thermocouple		446-511	Y
	Thermopile		2103-512	Y
	Remote		SMART-STAT-HNG	
	Touch Up Paint		TUPB-12	
	Valve NG		060-522	Y
	Valve LP		060-523	Y
	Valve Bracket	No longer available	073-145	
	Conversion Kit NG	No longer available	NGK-6XLS	
	Conversion Kit LP	No longer available	LPK-6XLS	
	Pilot Orifice NG		SRV446-505	Y
	Pilot Orifice LP		SRV446-517	Y
	Regulator NG		SRV060-518	Y
	Regulator LP		060-519	Y