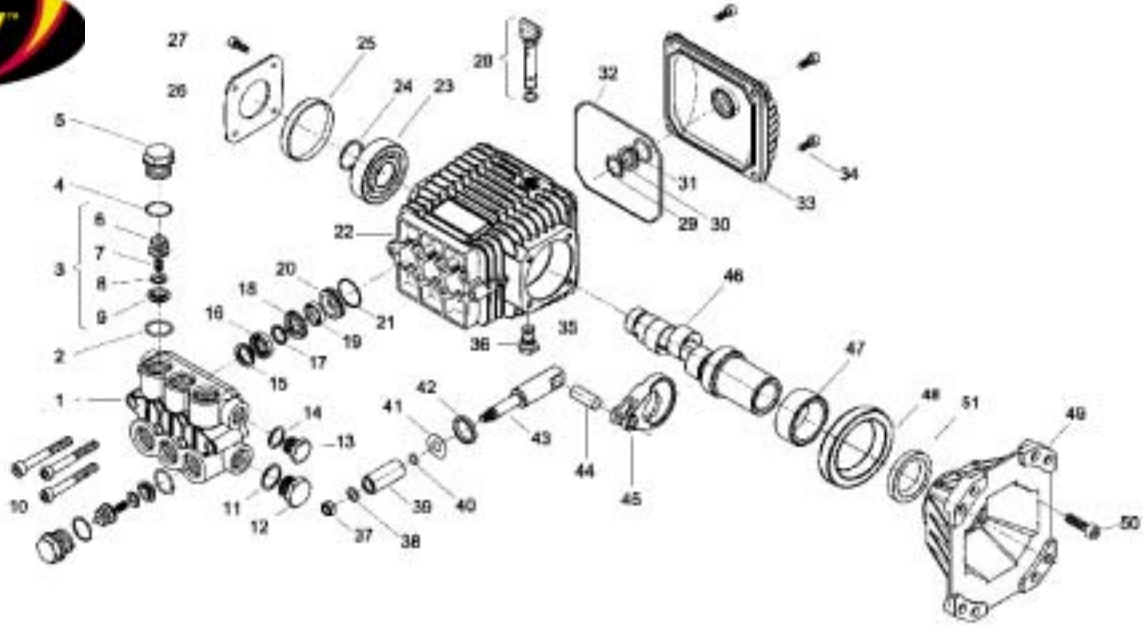


Legacy Model WMG 1" 3030-3535



POS NO.	PART NO.	DESCRIPTION	KIT	NO. PCS.
1	15-040119282	Pump Head (D.15)		1
2	15-040023512	Valves Assembly Seat	124	6
3	15-049887973	Check Valves	124	6
4	15-803182002	O-Ring Dia. 2.62 x 17.13	67	6
5	15-070040532	Ex. Deep Sealing Valve Cap M27 x 1.5	67	6
6	15-040114322	Valve Guide	124	6
7	15-040330512	Valve Spring	124	6
8	15-060068512	Valve	124	6
9	15-040023512	Valves Assembly Seat	124	6
10	15-862945002	Screw M8 x 60 UNI 5931		6
11	15-824140002	Gasket for Coupling 21.2 x 26 x 1		1
12	15-852629002	Plug G 1/2"		1
13	15-852579002	Plug G 3/8		1
14	15-824109002	Copper Gasket Dia. 17 x 22 x 1		1
15	15-040270322	Seal Packer	68, 73	3
16	15-802020002	Packing D.15	68, 73	3
17	15-040269322	Anti-Extrusion Ring	68, 73	3
18	15-040268532	Front Gland	73	3
19	15-802034002	U Pressure Seal Dia 15 x 22 x 5.5	68, 73	3
20	15-040166532	Packing Retainer	68	3
21	15-803073002	O-Ring Dia. 23.52 x 1.78	68, 73	3
22	15-040110092	Crankcase		1
23	15-812725002	Bearing Riv 6B 25		1
24	15-801185002	Shaft Ring Dia. 25		1
25	15-802101002	Cap, RCA 6210		1
26	15-050045612	Crankcase Cover		1
27	15-862108002	Screw M6x16 UNI 5931		4

POS NO.	PART NO.	DESCRIPTION	KIT	NO. PCS.
28	15-049832973	Filler Plug		1
29	15-801184002	Ring		1
30	15-040120322	Oil Sight Glass		1
31	15-803189002	O-Ring Dia. 2.62 x18.72		1
32	15-803210682	O-Ring D.2.62x120.32		1
33	15-040117092	Rear Cover		1
34	15-862168002	Galvanized Screw M6x22 UNI 5931		4
35	15-803057002	O-Ring 2037 - 39.34 x 2.62		1
36	15-852543502	Cap G.1/4x9 (EX852542002)		1
37	15-814561002	Stainless Steel Nut M8 UNI 5589		3
38	15-843642902	Washer Dia. 8.1x14x1		3
39	15-040010182	Ceramic Piston Dia. 15mm		3
40	15-803049002	O-Ring Dia. 1.78x5.28		3
41	15-843726002	Washer Dia. 9.1x24x1		3
42	15-802035002	Oil Seal Dia. 15x24x5	64	3
43	15-040107512	Plunger Rod		1
44	15-852003002	Piston Pin Dia. 8x25		1
45	15-040116112	Bronze Conrod		1
46	15-040324262	Hollow Shaft D.1" E=3.6 (3030)		1
	15-040325262	Hollow Shaft D.1" E=4.3 (3535)		1
47	15-812878902	Needle Bearing HK 4020		1
48	15-040328412	Bushing for Bearing		1
49	15-070045092	Motor FlangeVSAE 1"		1
50	15-862216002	Screw M6x25		1
51	15-802188002	Shaft Oil Seal		4

	KIT 124 CHECK VALVE/O-RING	KIT 64 PLUNGER OIL SEAL	KIT 68 PACKING/ BRASS ASSY	KIT 73 PACKING ONLY
KIT BREAKDOWN				
PART #	15-124	15-64	15-68	15-73
TOTAL PCS.	12	3	21	15