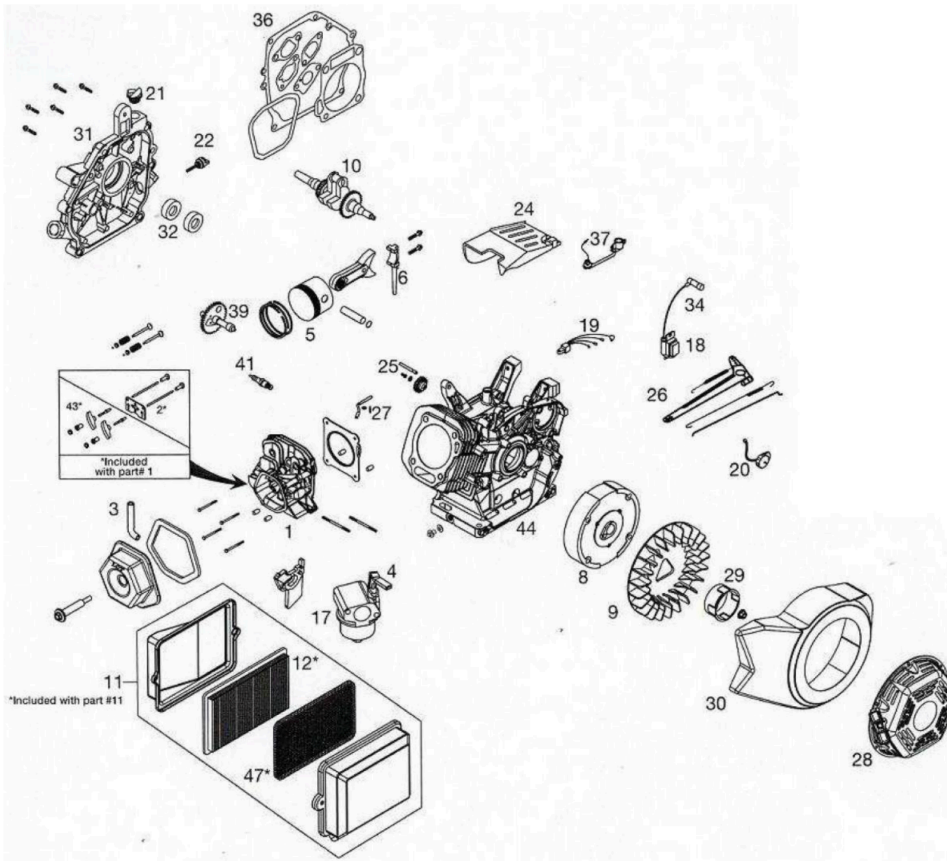




Mi-T-M Corporation / Engines / 1-0172 / 1-0172 / 1-0172 (sn:0-99999999)

Engine Assembly



| Id | Item # | Description | Quantity | Rev | Comments |
|----|---------|-------------------------------|----------|-----|----------|
| 1 | N/A | CYLINDER HEAD ASSEMBLY | | | |
| 2 | N/A | PUSH ROD ASSEMBLY | | | |
| 3 | 45-0169 | VALVE COVER ASSEMBLY | | | |
| 4 | N/A | CHOKE LEVER, CARBURETOR | | | |
| 5 | N/A | PISTON ASSEMBLY | | | |
| 6 | N/A | CONNECTING ROD ASSEMBLY | | | |
| 8 | N/A | FLYWHEEL ASSEMBLY | | | |
| 9 | N/A | COOLING FAN, FLYWHEEL | | | |
| 10 | N/A | CRANKSHAFT ASSEMBLY (TAPERED) | | | |
| 11 | 45-0181 | AIR FILTER ASSEMBLY PANEL | | | |
| 12 | 45-0182 | FILTER ELEMENT PAPER | | | |

| Id | Item # | Description | Quantity | Rev | Comments |
|----|---------|----------------------------------|----------|-----|----------|
| 17 | 45-0170 | CARBURETOR SERVICE KIT | | | |
| 18 | 45-0171 | IGNITION COIL ASSEMBLY | | | |
| 19 | 45-0172 | CONTROL MODULE (CDI BOX) | | | |
| 20 | 45-0143 | ON/OFF SWITCH | | | |
| 21 | 45-0183 | NON-REMOVABLE OIL PLUG | | | |
| 22 | 45-0184 | OIL DIPSTICK | | | |
| 24 | N/A | THROTTLE CONTROL ASSEMBLY | | | |
| 25 | N/A | GOVERNOR GEAR ASSEMBLY | | | |
| 26 | 45-0173 | GOVERNOR LINK ASSEMBLY | | | |
| 27 | N/A | GOVERNOR ARM SHAFT ASSEMBLY | | | |
| 28 | 45-0174 | RECOIL STARTER ASSEMBLY | | | |
| 29 | N/A | STARTER CUP SERVICE | | | |
| 30 | 45-0175 | BLOWER HOUSING SERVICE KIT | | | |
| 31 | N/A | CRANKCASE COVER ASSEMBLY SERVICE | | | |
| 32 | N/A | OIL SEAL KIT | | | |
| 34 | 45-0176 | SPARK PLUG BOOT | | | |
| 36 | 45-0177 | GASKET KIT | | | |
| 37 | 45-0178 | LOW OIL SENSOR | | | |
| 39 | N/A | CAMSHAFT SYSTEM ASSEMBLY | | | |
| 41 | 45-0179 | SPARK PLUG | | | |
| 43 | N/A | ROCKER ARM ASSEMBLY | | | |
| 44 | N/A | CYLINDER ROD ASSEMBLY | | | |
| 47 | 45-0185 | FOAM PRE-FILTER | | | |