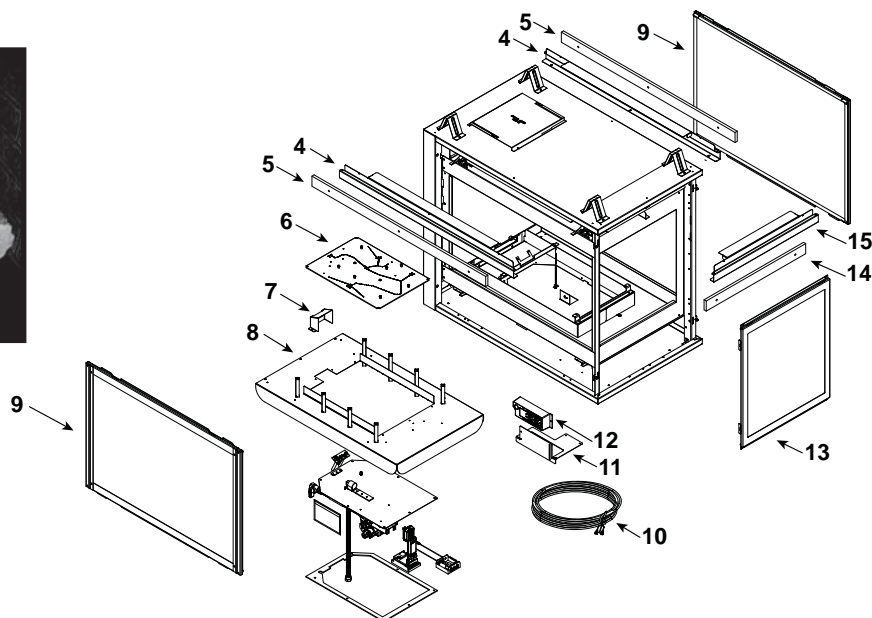
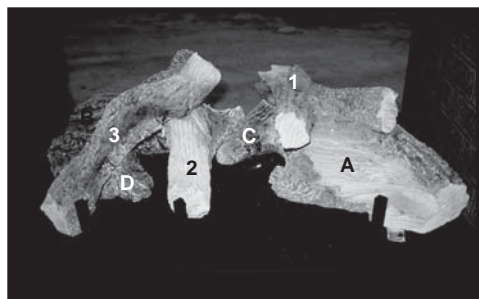


Log Set Assembly



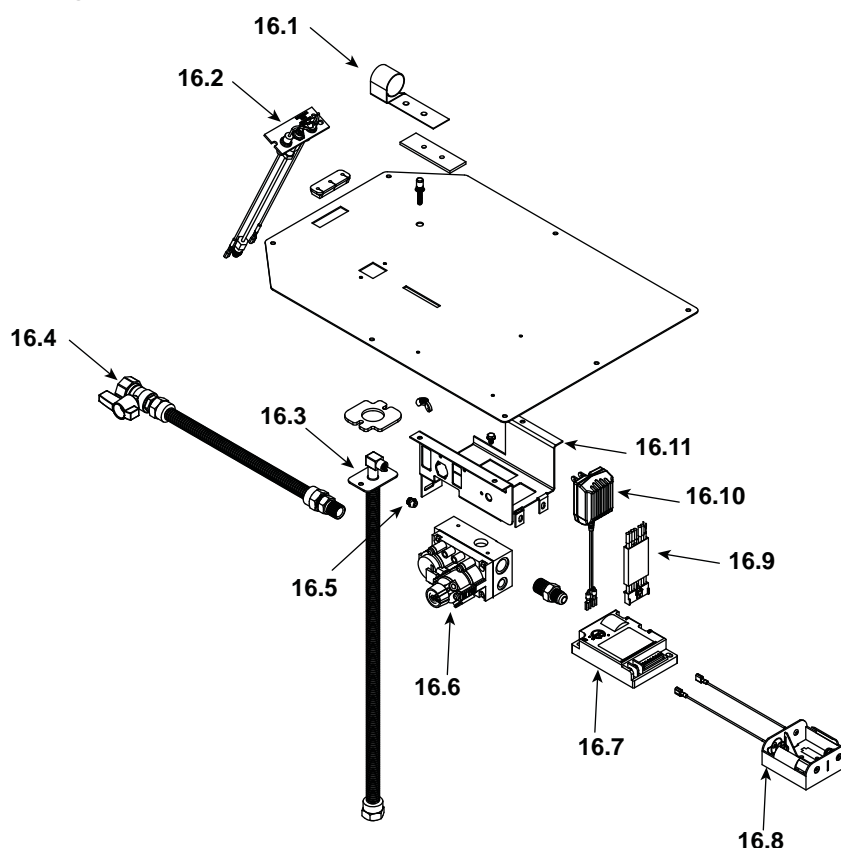
IMPORTANT: THIS IS DATED INFORMATION. Parts must be ordered from a dealer or distributor. **Hearth and Home Technologies does not sell directly to consumers.** Provide model number and serial number when requesting service parts from your dealer or distributor.



**Stocked
at Depot**

ITEM	DESCRIPTION	COMMENTS	PART NUMBER	
	Log Set Assembly		LOGS-2128	Y
A	Log A	Pre 5/15/16, Must order complete assembly	SRV2128-701	
B	Log B		SRV2128-702	
C	Log C		SRV2128-703	
D	Log D		SRV2128-706	
1	Log 1		SRV2128-704	
2	Log 2		SRV2128-705	
3	Log 3		SRV2128-707	
4	Sheetrock Ledge (side)	Qty 2 req	2130-118	
5	Non-Comb, Long	Qty 2 req	2130-199	
6	Burner NG, LP		2128-007	Y
7	Pilot Shield		2128-124	
8	Base Pan/Grate Assembly		2128-005	
9	Glass Door Assembly (Side)	Qty 2 req	GLA-6TROC	Y
10	Thermostat Wire		SRV2118-170	Y
11	Junction Box bracket		2128-128	
12	Junction Box		SRV4021-013	Y
13	Glass Door Assembly (End)		GLA-2130	Y
14	Non- Comb, Short		2130-197	
15	Sheetrock Ledge (End)		2130-126	
	Refractory Panel		SRV2129-016	
	Surround Overlay (contains overlay for top, bottom and sides)		SRV2130-FACE	

#16 Valve Assembly



IMPORTANT: THIS IS DATED INFORMATION. Parts must be ordered from a dealer or distributor. **Hearth and Home Technologies does not sell directly to consumers.** Provide model number and serial number when requesting service parts from your dealer or distributor.



**Stocked
at Depot**

ITEM	DESCRIPTION	COMMENTS	PART NUMBER	
16.1	Shutter Bracket Assembly		2118-121	Y
16.2	Pilot Assembly NG		2208-012	Y
	Pilot Assembly LP		2208-013	Y
16.3	Flexible Gas Connector		530-302A	Y
16.4	Flex Ball Valve Assembly		SRV302-320	Y
16.5	Orifice NG (#32C)		SRV582-832	Y
	Orifice LP (#50C)		582-850	Y
16.6	Valve NG		750-500	Y
	Valve LP		750-501	Y
16.7	Module		593-592	Y
16.8	Battery Pack		SRV593-594	Y
16.9	Module Wire Assembly		SRV593-590	Y
16.10	3 Volt Transformer		SRV593-593	Y
16.11	Valve Bracket		2118-104	

Additional service part numbers appear on following page.



No one builds a better fire

Service Parts

PIER-36TRB-IPI

Beginning Manufacturing Date: Sept 2008

Ending Manufacturing Date: March 2017

IMPORTANT: THIS IS DATED INFORMATION. Parts must be ordered from a dealer or distributor. **Hearth and Home Technologies does not sell directly to consumers.** Provide model number and serial number when requesting service parts from your dealer or distributor.

**Stocked
at Depot**[illegible]