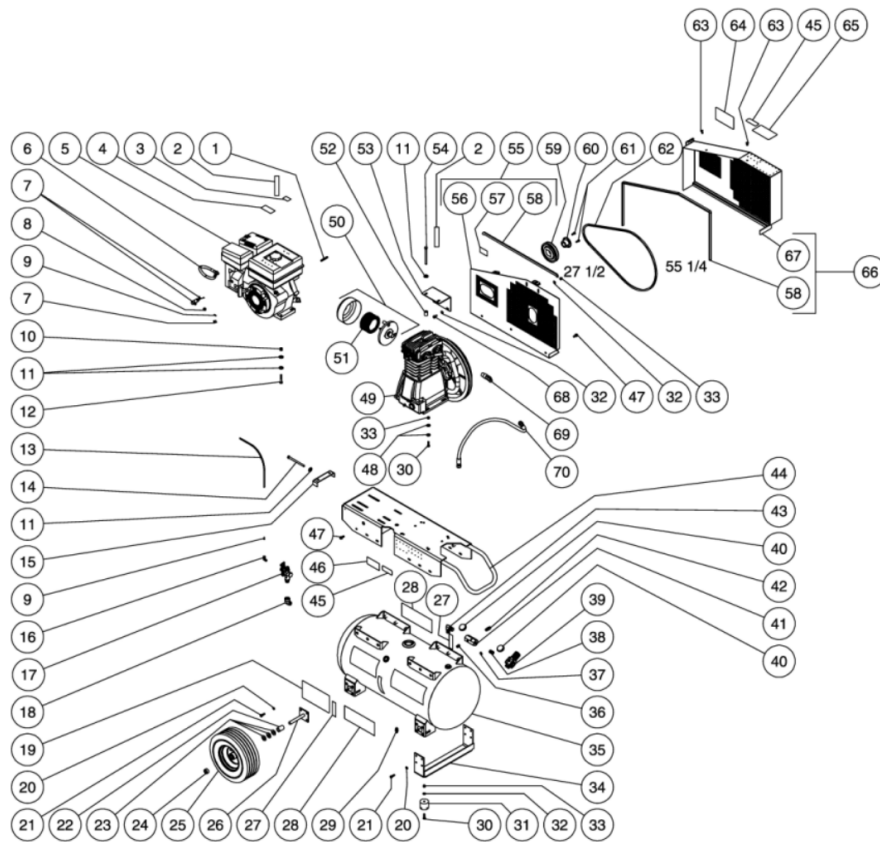




AS2-PR09-30M / AS2-PR09-30M (sn:0-99999999)

TANK ASSEMBLY



| Id | Item # | Description | Quantity | Rev | Comments |
|----|----------|-------------------------------------|----------|-----|----------|
| 1 | 43-0078 | KEY | 1 | | |
| 2 | N/A Sep. | DECAL- CHECK OIL TAPE (SEE 34-9016) | 2 | | |
| 3 | N/A Sep. | DECAL- ENGINE FUEL (SEE 34-9016) | 1 | | |
| 4 | N/A Sep. | DECAL- MUFFLER HOT (SEE 34-9016) | 1 | | |

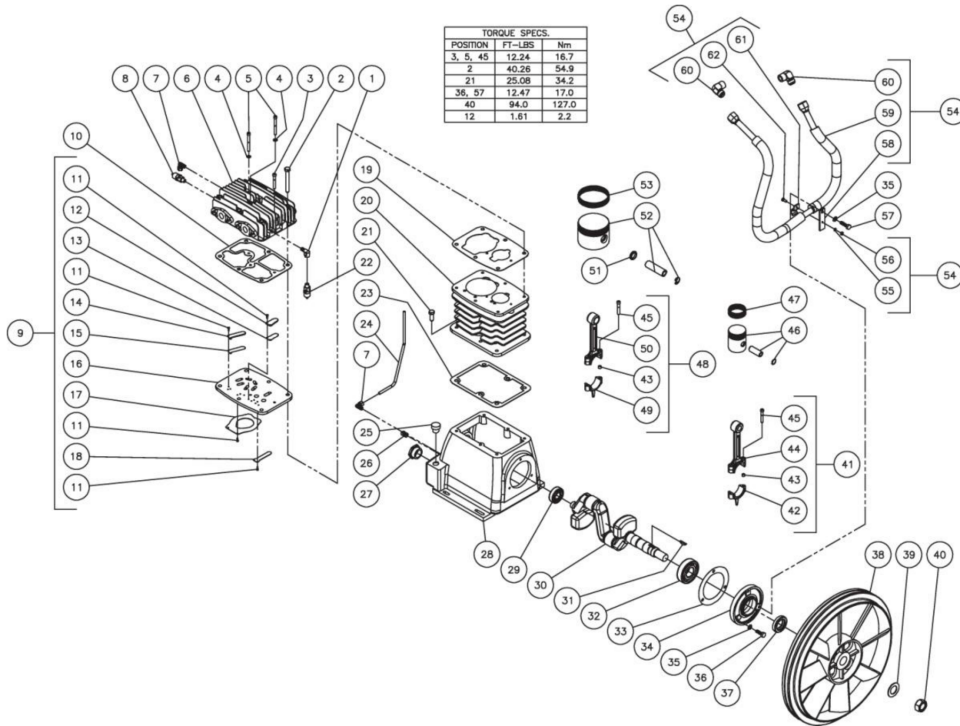
| Id | Item # | Description | Quantity | Rev | Comments |
|----|------------|--|----------|-----|----------|
| 5 | 1-0134 | ENGINE- 9 HP SUBARU | 1 | | |
| 6 | 70-0380 | DRAINZIT DRAIN ASSEMBLY | 1 | | |
| 7 | 33-0394 | THROTTLE CONTROL | 1 | | |
| 8 | 23-0315 | NUT | 1 | | |
| 9 | 23-0425 | TUBE SUPPORT | 2 | | |
| 10 | 30-0159 | LOCKNUT | 4 | | |
| 11 | 28-0023 | FLATWASHER | 11 | | |
| 12 | 27-0121 | BOLT | 4 | | |
| 13 | 15-0238 | TUBE *(TWO FEET REQUIRED) | 1 | | |
| 14 | 27-0133 | BOLT | 1 | | |
| 15 | 20-0650A01 | BELT TENSION PLATE | 1 | | |
| 16 | 23-0316 | ELBOW | 1 | | |
| 17 | 22-0270 | PILOT VALVE | 1 | | |
| 18 | 24-0041 | ELBOW | 1 | | |
| 19 | N/A Sep. | DECAL- WARNING/WARNING/CAUTION (SEE 34-9016) | 1 | | |
| 20 | 29-0007 | LOCKWASHER | 16 | | |
| 21 | 27-0067 | BOLT | 16 | | |
| 22 | 62-0176 | AXLE SPACER | 2 | | |
| 23 | 28-0008 | WASHER | 6 | | |
| 24 | 33-0351 | SHAFT | 2 | | |
| 25 | 14-0006 | WHEEL | 2 | | |
| 26 | 20-0670A01 | AXLE STUB BRACKET | 2 | | |
| 27 | N/A Sep. | DECAL- TANK DRAIN (SEE 34-9016) | 2 | | |
| 28 | 34-0828 | DECAL- MI-T-M AIR COMPRESSOR | 2 | | |
| 29 | 23-0312 | PETCOCKS | 1 | | |
| 30 | 27-0068 | BOLT | 6 | | |
| 31 | 14-0008 | ISOLATOR | 2 | | |
| 32 | 28-0003 | WASHER | 6 | | |
| 33 | 30-0157 | LOCKNUT | 8 | | |
| 34 | 20-0671A01 | SUPPORT FOOT BRACKET | 1 | | |
| 35 | N/A | AIR TANK ASSEMBLY | 1 | | |
| 36 | 24-0009 | PLUG | 1 | | |
| 37 | 24-0082 | PLUG | 1 | | |
| 38 | 24-0175 | NIPPLE | 1 | | |
| 39 | 22-0231 | ADJUSTABLE REGULATOR | 1 | | |
| 40 | 22-0271 | PRESSURE GAUGE | 2 | | |
| 41 | 24-0266 | MANIFOLD | 1 | | |
| 42 | 22-0267 | PRESSURE RELIEF VALVE | 1 | | |
| 43 | 24-0267 | ELBOW | 1 | | |

| Id | Item # | Description | Quantity | Rev | Comments |
|----|------------|--|----------|-----|----------|
| 44 | 5-0198A01 | BASEPLATE | 1 | | |
| 45 | N/A Sep. | DECAL- HOT SURFACE (SEE 34-9016) | 1 | | |
| 46 | N/A | DECAL- DATA PLATE | 1 | | |
| 47 | 27-9524 | BOLT | 15 | | |
| 48 | 28-0022 | WASHER | 8 | | |
| 49 | 3-0233 | PUMP | 1 | | |
| 50 | 19-0225 | FILTER CANISTER | 1 | | |
| 51 | 19-0226 | FILTER | 1 | | |
| 52 | 33-0425 | SPACER | 2 | | |
| 53 | 20-0734A01 | ANGLE BRACKET | 1 | | |
| 54 | 27-0131 | BOLT | 2 | | |
| 55 | 854-0066 | BELTGUARD ASSEMBLY (INC. 56-58) | 1 | | |
| 56 | N/A Sep. | BELTGUARD BACK (SEE 854-0068) | 1 | | |
| 57 | N/A Sep. | DECAL- WARNING: BELTGUARD IN PLACE (SEE 34-9016) | 1 | | |
| 58 | 33-0020 | EDGING *(SEVEN FEET REQUIRED) | 1 | | |
| 59 | 10-0123 | SHEAVE | 1 | | |
| 60 | 9-0005 | BUSHING | 1 | | |
| 61 | 27-0015 | SCREW | 2 | | |
| 62 | 11-0058 | DRIVE BELT | 1 | | |
| 63 | 33-0197 | FASTENER | 2 | | |
| 64 | N/A Sep. | DECAL- MAINTENANCE INSTRUCTIONS (SEE 34-9016) | 1 | | |
| 65 | N/A Sep. | DECAL- OPERATING INSTRUCTIONS (SEE 34-9016) | 1 | | |
| 66 | 854-0067 | BELTGUARD ASSEMBLY COVER (INC. 58, 67) | 1 | | |
| 67 | N/A Sep. | BELTGUARD FRONT ASSEMBLY (SEE 854-0067) | 1 | | |
| 68 | 27-0066 | SCREW | 2 | | |
| 69 | 24-0075 | ELBOW | 1 | | |
| 70 | 15-0243 | HOSE | 1 | | |
| | 34-9016 | DECAL KIT (INC. 2-4, 19, 27, 45, 57, 64-65) | | | |
| | | *MUST ORDER IN ONE FOOT LENGTHS | | | |



AS2-PR09-30M / AS2-PR09-30M (sn:0-99999999)

COMPRESSOR PUMP



| Id | Item # | Description | Quantity | Rev | Comments |
|----|----------|---|----------|-----|----------|
| 1 | 23-0118 | ELBOW | 1 | | |
| 2 | 27-0576 | BOLT | 6 | | |
| 3 | 27-9559 | SCREW | 1 | | |
| 4 | N/A Sep. | FLAT WASHER (SEE 70-0364 OR 70-0371) | 2 | | |
| 5 | 27-9558 | SCREW | 1 | | |
| 6 | 46-1119 | CYLINDER HEAD | 1 | | |
| 7 | 23-0316 | ELBOW | 2 | | |
| 8 | 22-0362 | LOW PRESSURE SAFETY VALVE | 1 | | |
| 9 | 46-1094 | VALVE PLATE (INC. 11-18) | 1 | | |
| 10 | N/A Sep. | VALVE PLATE GASKET (SEE 70-0361 OR 70-0366) | 1 | | |
| 11 | 27-9561 | SCREW | 12 | | |
| 12 | N/A Sep. | VALVE STOP 1 (SEE 46-1094 OR 70-0366) | 2 | | |
| 13 | N/A Sep. | VALVE 1 (SEE 46-1094 OR 70-0366) | 2 | | |
| 14 | N/A Sep. | VALVE STOP 2 (SEE 46-1094 OR 70-0366) | 2 | | |

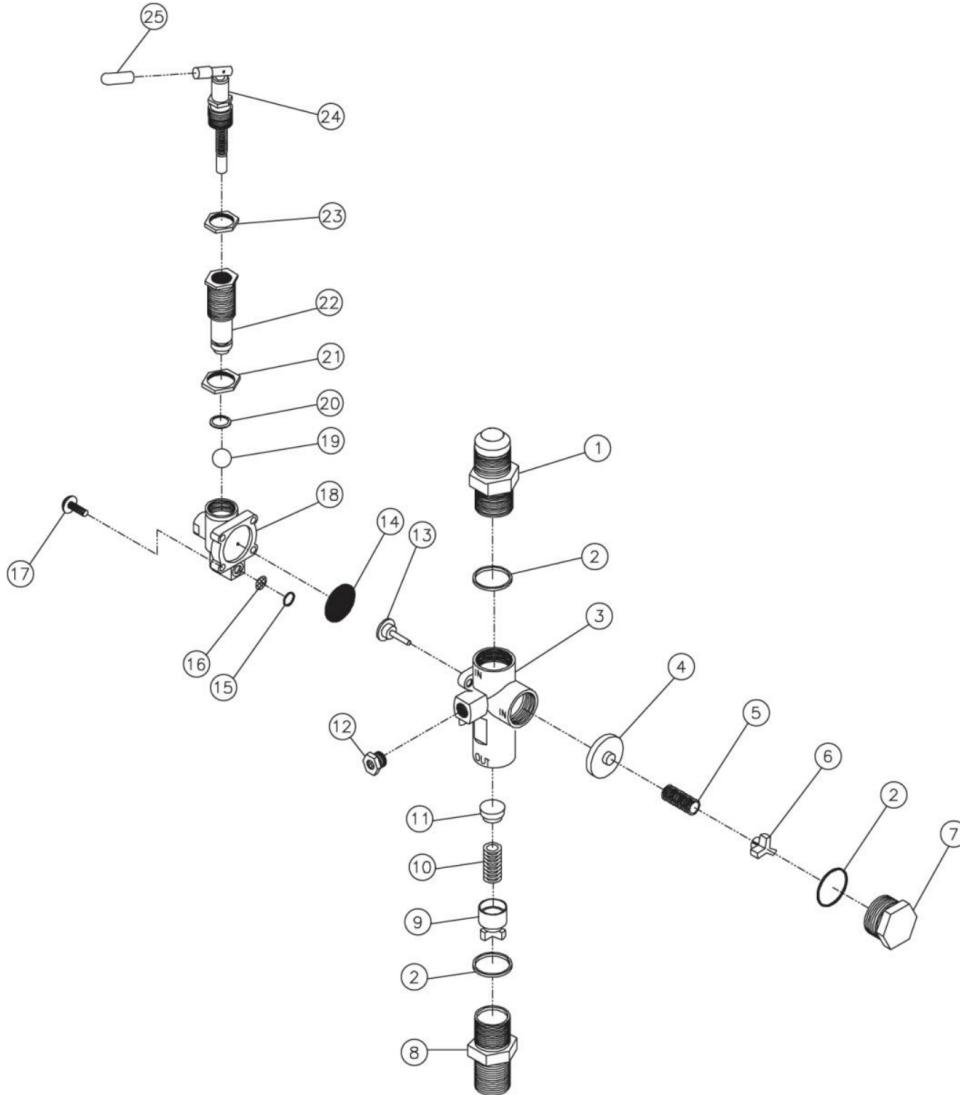
| Id | Item # | Description | Quantity | Rev | Comments |
|-----------|---------------|---|-----------------|------------|-----------------|
| 15 | N/A Sep. | VALVE 2 (SEE 46-1094 OR 70-0366) | 2 | | |
| 16 | N/A Sep. | VALVE PLATE (SEE 46-1094) | 1 | | |
| 17 | N/A Sep. | VALVE 3 (SEE 46-1094 OR 70-0366) | 1 | | |
| 18 | N/A Sep. | VALVE 4 (SEE 46-1094 OR 70-0366) | 1 | | |
| 19 | N/A Sep. | VALVE PLATE GASKET (SEE 70-0361 OR 70-0366) | 1 | | |
| 20 | 46-1120 | CYLINDER | 1 | | |
| 21 | 27-0117 | BOLT | 6 | | |
| 22 | 22-0361 | HIGH PRESSURE SAFETY VALVE | 1 | | |
| 23 | N/A Sep. | CRANKCASE GASKET (SEE 70-0361) | 1 | | |
| 24 | 33-0415 | CRANKCASE BREATHER TUBE | 1 | | |
| 25 | 46-1121 | OIL FILL PLUG | 1 | | |
| 26 | 24-0009 | PLUG | 1 | | |
| 27 | 46-1098 | OIL SIGHT GLASS | 1 | | |
| 28 | 46-1122 | CRANKCASE | 1 | | |
| 29 | 48-0081 | BEARING | 1 | | |
| 30 | 46-1123 | CRANKSHAFT | 1 | | |
| 31 | 43-0112 | KEY | 1 | | |
| 32 | 48-0082 | BEARING | 1 | | |
| 33 | N/A Sep. | FLANGE GASKET (SEE 70-0361) | 1 | | |
| 34 | 38-0062 | FLANGE | 1 | | |
| 35 | 29-0007 | LOCKWASHER | 3 | | |
| 36 | 27-0067 | BOLT | 2 | | |
| 37 | 26-0274 | OIL SEAL | 1 | | |
| 38 | 10-0124 | FLYWHEEL | 1 | | |
| 39 | N/A | WASHER | 1 | | |
| 40 | N/A | NUT | 1 | | |
| 41 | 70-0381 | CONNECTING ROD | 1 | | |
| 42 | N/A Sep. | CONNECTING ROD CAP (SEE 70-0381) | 1 | | |
| 43 | N/A Sep. | CONNECTING ROD GUIDE BUSHING (SEE 70-0381 OR 70-0382) | 4 | | |
| 44 | N/A Sep. | CONNECTING ROD (SEE 70-0381) | 1 | | |
| 45 | N/A Sep. | BOLT (SEE 70-0381 OR 70-0382) | 4 | | |
| 46 | 46-1101 | PISTON | 1 | | |
| 47 | 70-0362 | RING KIT | 1 | | |
| 48 | 70-0382 | LOW PRESSURE CONNECTING ROD KIT | 1 | | |
| 49 | N/A Sep. | LOW PRESSURE ROD CAP (SEE 70-0382) | 1 | | |
| 50 | N/A Sep. | LOW PRESSURE ROD (SEE 70-0382) | 1 | | |
| 51 | 9-0078 | SPACER BUSHING | 2 | | |
| 52 | 46-1102 | PISTON | 1 | | |
| 53 | 70-0363 | RING KIT | 1 | | |

| Id | Item # | Description | Quantity | Rev | Comments |
|-----------|---------------|---|-----------------|------------|-----------------|
| 54 | 70-0370 | INTERCOOLER KIT | 1 | | |
| 55 | N/A Sep. | LOCKWASHER (SEE 70-0365 OR 70-0370) | 1 | | |
| 56 | 30-6001 | NUT | 1 | | |
| 57 | 27-0068 | BOLT | 1 | | |
| 58 | N/A Sep. | INTERCOOLER BRACKET ASSEMBLY (SEE 70-0370) | 1 | | |
| 59 | N/A Sep. | INTERCOOLER (SEE 70-0370) | 1 | | |
| 60 | 23-0430 | ELBOW | 2 | | |
| 61 | N/A Sep. | INTERCOOLER CLAMP ASSEMBLY (SEE 70-0365 OR 70-0370) | 1 | | |
| 62 | 27-8805 | SCREW | 1 | | |
| KIT | 70-0361 | GASKET (INC. 10, 19, 23, 33) | | | |
| KIT | 70-0362 | RING (INC. 47) | | | |
| KIT | 70-0363 | RING (INC. 53) | | | |
| KIT | 70-0365 | BRACKET ASSEMBLY (INC. 55-56, 61-62) | | | |
| KIT | 70-0366 | GASKET VALVE (INC. 10-15, 17-19) | | | |
| KIT | 70-0370 | INTERCOOLER (INC. 55-56, 58-62) | | | |
| KIT | 70-0382 | LOW PRESSURE CONNECTING ROD (INC. 43, 45, 49, 50) | | | |
| KIT | 70-0381 | HIGH PRESSURE CONNECTING ROD (INC. 42-45) | | | |



AS2-PR09-30M / AS2-PR09-30M (sn:0-99999999)

PILOT VALVE



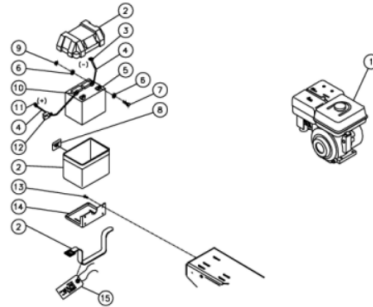
| Id | Item # | Description | Quantity | Rev | Comments |
|----|----------|--|----------|-----|----------|
| 1 | N/A | INLET PORT FITTING | 1 | | |
| 2 | N/A Sep. | O-RING (SEE 70-0241) | 3 | | |
| 3 | N/A | MAIN BODY | 1 | | |
| 4 | N/A Sep. | PISTON ASSEMBLY-UNLOADER VALVE (SEE 70-0241) | 1 | | |
| 5 | N/A Sep. | SPRING-UNLOADER VALVE (SEE 70-0241) | 1 | | |
| 6 | N/A | SPRING SEAT-UNLOADER VALVE | 1 | | |
| 7 | N/A | CAP | 1 | | |

| Id | Item # | Description | Quantity | Rev | Comments |
|-----------|---------------|--|-----------------|------------|-----------------|
| 8 | N/A | DISCHARGE PORT FITTING | 1 | | |
| 9 | N/A | SPRING SEAT ASSEMBLY-CHECK VALVE | 1 | | |
| 10 | N/A Sep. | SPRING-CHECK VALVE (SEE 70-0241) | 1 | | |
| 11 | N/A Sep. | PISTON-CHECK VALVE (SEE 70-0241) | 1 | | |
| 12 | 23-0419 | MUFFLER | 1 | | |
| 13 | N/A Sep. | STEM UNLOADER (SEE 70-0241) | 1 | | |
| 14 | N/A Sep. | DIAPHRAM (SEE 70-0241) | 1 | | |
| 15 | N/A Sep. | O-RING (SEE 70-0241) | 1 | | |
| 16 | N/A Sep. | SCREEN (SEE 70-0241) | 1 | | |
| 17 | N/A | SCREW W/WASHER | 4 | | |
| 18 | N/A | PILOT BODY | 1 | | |
| 19 | N/A Sep. | BALL (SEE 70-0241) | 1 | | |
| 20 | N/A Sep. | O-RING (SEE 70-0241) | 1 | | |
| 21 | N/A | DIFFERENTIAL ADJUSTING LOCKNUT | 1 | | |
| 22 | N/A | DIFFERENTIAL ADJUSTING NUT | 1 | | |
| 23 | N/A | PRESSURE ADJUSTING LOCKNUT | 1 | | |
| 24 | N/A Sep. | PRESSURE ADJUSTING TOGGLE ASSEMBLY (SEE 70-0241) | 1 | | |
| 25 | N/A | RED TOGGLE COVER | 1 | | |
| KIT | 70-0241 | REPAIR KIT (INC. 2 EACH 4-5, 10-11, 13-16, 19-20, 24; INC. 3 EACH 2) | | | |



AS2-PR09-30M / AS2-PR09-30M (sn:0-99999999)

HONDA ELECTRIC START OPTION AX-0017



| Id | Item # | Description | Quantity | Rev | Comments |
|----|---------|--------------------------------------|----------|-----|----------|
| 1 | 1-0126 | ENGINE- HONDA 8HP ELECTRIC START | 1 | | |
| 2 | 33-0092 | BATTERY BOX | 1 | | |
| 3 | 32-0744 | TERMINAL | 1 | | |
| 4 | 32-0065 | BATTERY CABLE *(THREE FEET REQUIRED) | 1 | | |

| Id | Item # | Description | Quantity | Rev | Comments |
|----|------------|---------------------|----------|-----|----------|
| 5 | 32-0058 | BATTERY | 1 | | |
| 6 | 28-0003 | WASHER | 4 | | |
| 7 | 27-0066 | BOLT | 2 | | |
| 8 | 34-0589 | DECAL- BATTERY | 1 | | |
| 9 | 30-0157 | LOCKNUT | 2 | | |
| 10 | 32-0097 | TERMINAL | 2 | | |
| 11 | 32-0098 | TERMINAL | 1 | | |
| 12 | 33-0004 | BATTERY CABLE COVER | 1 | | |
| 13 | 27-9524 | BOLT | 4 | | |
| 14 | 20-0625A01 | BATTERY BOX BRACKET | 1 | | |
| 15 | 34-0096 | TAG- BATTERY | 1 | | |

*MUST ORDER IN ONE FOOT LENGTHS