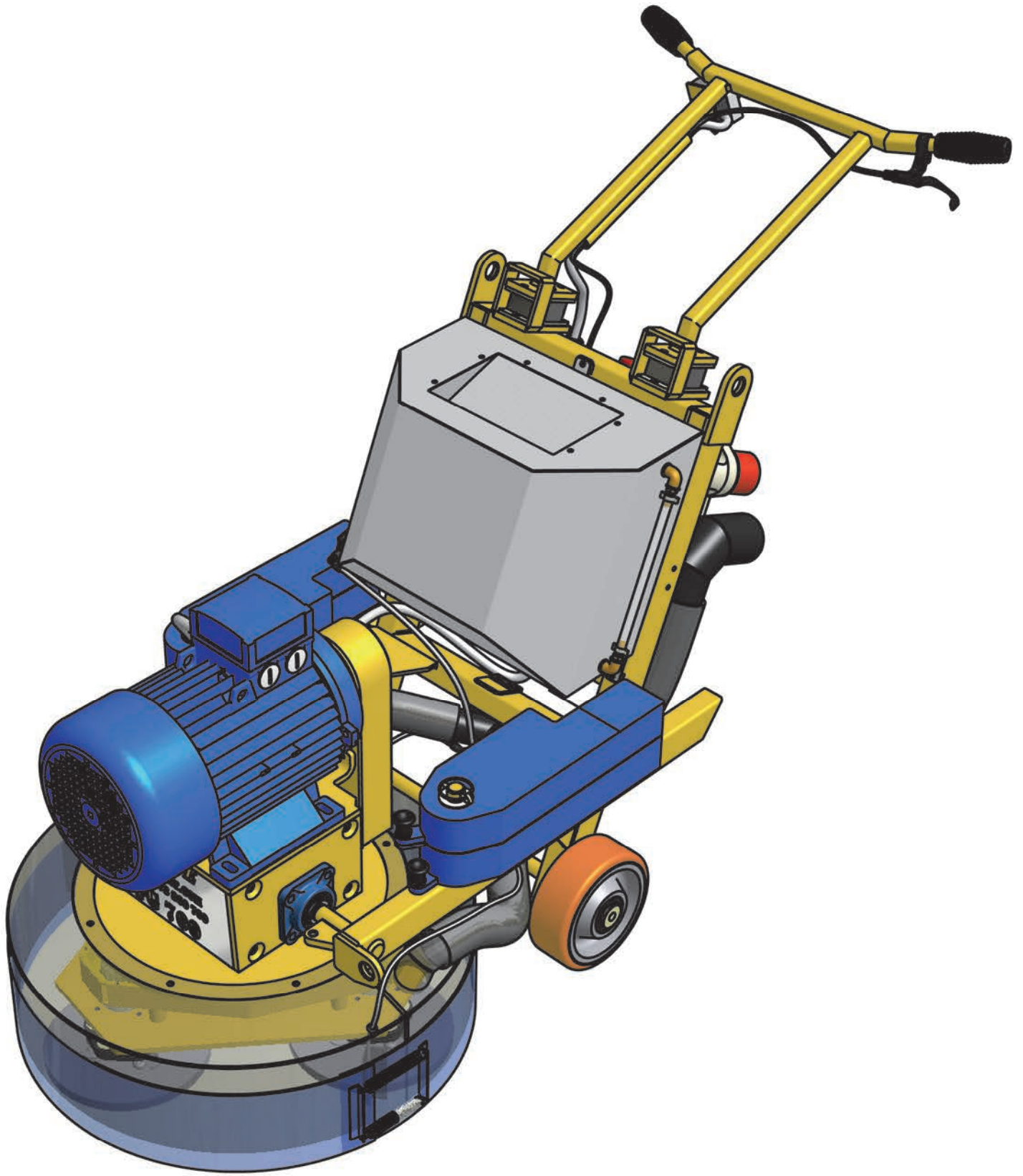








DFG700-1
Diamond Floor Grinder
Operating Manual













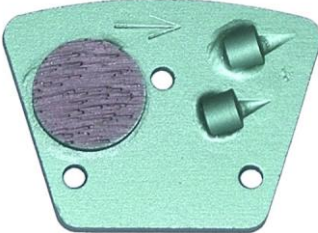

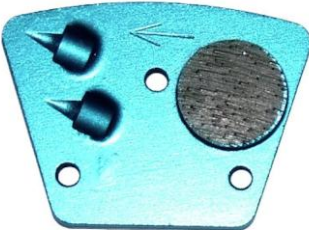
SPE
Surface Preparation Equipment™







DFG 700


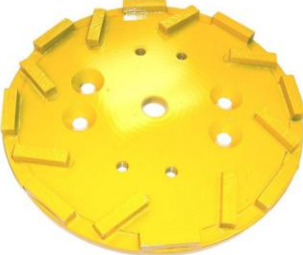
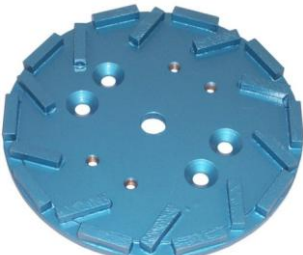

	Part No	Description	Application
	6450	Resin Tool Drive Plate	Quick release drive plate with Velcro for the fitment of resin tools. Can be used wet or dry.
	6460	Combination Resin / Metal Tool 80 Grit Orange	Mixed bond ensures a very fine scratch profile for use after metal bond or directly onto power floated concrete leaves perfect surface for thin film coatings or polishing with a minimum number of stages. Can be used wet or dry.
	6461	Resin Tool 100 Grit Black	For the first stage of resin polishing leaves a matt finish. Can be used wet or dry.
	6462	Resin Tool 200 Grit Blue	For the second stage of resin polishing leaves a closed matt finish. Can be used wet or dry.
	6463	Resin Tool 400 Grit Red	For the third stage of resin polishing leaves a honed silk finish. Can be used wet or dry
	6464	Resin Tool 800 Grit White	For the fourth stage of resin polishing leaves a light reflective finish suitable for most industrial and commercial applications. Can be used wet or dry

	Part No	Description	Application
	6465	Resin Tool 1500 Grit Yellow	For the final stage of resin polishing leaves a clear reflective shine ideal for decorative surfaces. Can be used wet or dry.
	6451	Metal Tool Drive Plate	Quick release drive plate for the bolt on fitment of metal tools. Can be used wet or dry.
	6470	Metal Tool 16 Grit Hard Bond	For initial smoothing of rough surfaces, coating and adhesive removal from soft concrete. Can be used wet or dry.
	6471	Metal Tool 120 Grit Hard Bond	First Stage Tool for grinding / polishing soft concrete. Can be used wet or dry.
	6472	Metal Tool 80 Grit Hard Bond	Second Stage Tool for grinding / polishing soft concrete. Can be used wet or dry.
	6473	Metal Tool 120 Grit Hard Bond	Third Stage Tool for grinding / polishing soft concrete. Can be used wet or dry.

	Part No	Description	Application
	6474	Metal Tool 16 Grit Medium Bond	For initial smoothing of rough surfaces, coating and adhesive removal. Can be used wet or dry.
	6475	Metal Tool 30 Grit Medium Bond	First Stage Tool for grinding / polishing concrete and seamless terrazzo. Can be used wet or dry.
	6476	Metal Tool 80 Grit Medium Bond	Second Stage Tool for grinding / polishing concrete and seamless terrazzo. Can be used wet or dry.
	6477	Metal Tool 120 Grit Medium Bond	Third Stage Tool for grinding / polishing concrete and seamless terrazzo. Can be used wet or dry.
	6478	Metal Tool 16 Grit Soft Bond	For initial smoothing of hard rough surfaces, coating and adhesive removal from hard dense concrete. Can be used wet or dry.
	6479	Metal Tool 30 Grit Soft Bond	First Stage Tool for grinding / polishing hard dense concrete. Can be used wet or dry.

	Part No	Description	Application
	6480	Metal Tool 80 Grit Soft Bond	Second Stage Tool for grinding / polishing hard dense concrete. Can be used wet or dry.
	6481	Metal Tool 120 Grit Soft Bond	Third Stage Tool for grinding / polishing hard dense concrete. Can be used wet or dry.
	6486	Green PCD Tool 1 Segment Anti-clockwise	For the rapid removal of adhesive, coatings and failed latex from a hard substrate.
	6488	Green PCD Tool 2 Segment Anti-clockwise	For the rapid removal of adhesive, coatings and failed latex from a hard substrate.
	6498	Blue PCD Tool 1 Segment Clockwise	For the rapid removal of adhesive, coatings and failed latex from a hard substrate.
	6499	Blue PCD Tool 2 Segment Clockwise	For the rapid removal of adhesive, coatings and failed latex from a hard substrate.

	Part No	Description	Application
	5064A	DFG700 250mm Adapter Plate	Allows conventional 250mm segmented diamond grinding plates to be fitted.
	6401	10 Segment Blue, 250mm Diamond Plate	10 Segments, 10mm segment depth. Economical grinding of concrete and adhesive. Can be used wet or dry.
	6402	10 Segment Red, 250mm Diamond Plate	10 Segments, 10mm segment depth. Removal of coatings and S/L. Coarse diamond grit. Can be used wet or dry.
	6403	16 Segment Blue, 250mm Diamond Plate	16 Segments, 10mm segment depth. Grinding of concrete in preparation for following on coatings. Excellent cost per square metre. Can be used wet or dry.
	6403A	16 Segment Black, 250mm Diamond Plate	16 Segments, 10mm segment depth. Hard bond for softer surfaces. Grinding of concrete in preparation for following on coatings. Excellent cost per square metre. Can be used wet or dry.
	6403B	16 Segment Grey, 250mm Diamond Plate	16 Segments, 10mm segment depth. Soft bond for hard surfaces. Grinding of concrete in preparation for following on coatings. Excellent cost per square metre. Can be used wet or dry.

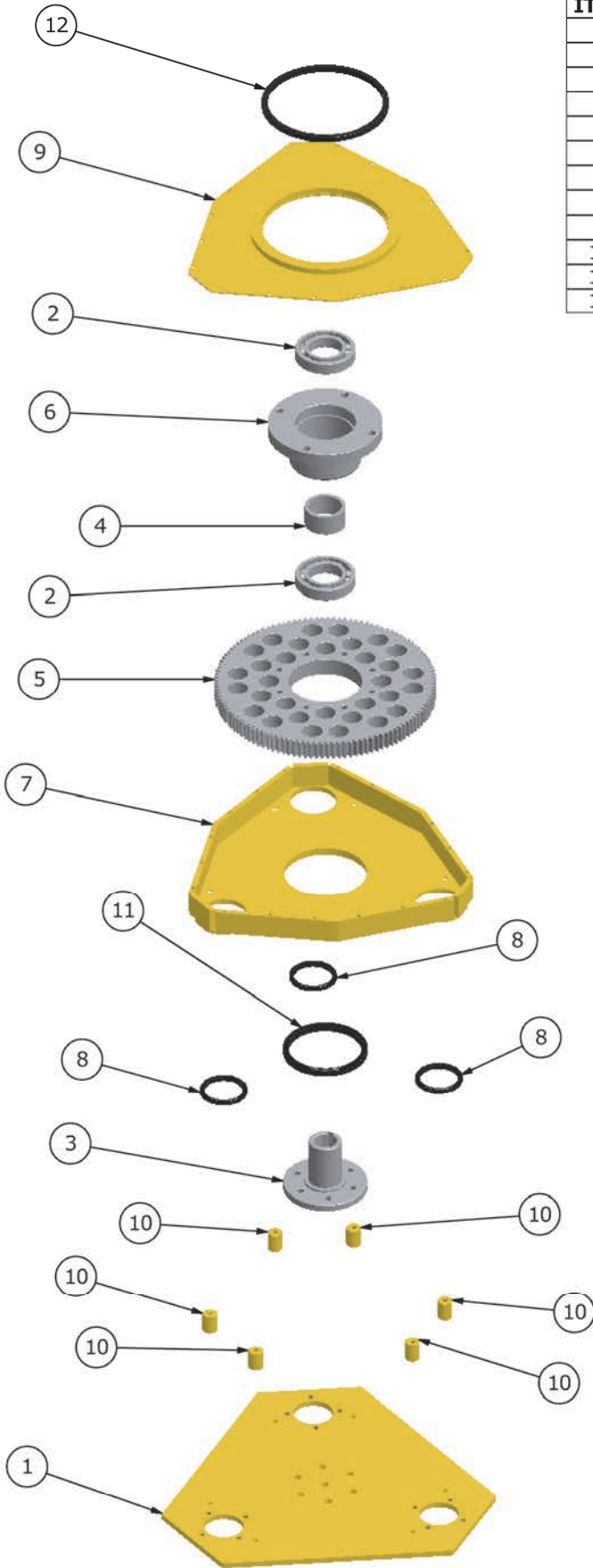
	Part No	Description	Application
	6403C	16 Segment Purple, 250mm Diamond Plate	16 Segments, 10mm segment depth. Soft bond for hard surfaces. Second stage grinding of terrazzo and decorative concrete. Leaves a smooth flat finish.
	6403Y	16 Segment Yellow, 250mm Diamond Plate	16 Segments, 10mm segment depth. Economical grinding of concrete in preparation for following on coatings. Excellent cost per square metre. Can be used wet or dry
	6404	20 Segment Blue, 250mm Premium Diamond Plate	20 Segments, 10mm segment depth. Premium plate for concrete grinding, paint removal, 1st stage grinding of resin based terrazzo. Can be used wet or dry.
	6405	16 Segment Button Head, 250mm Premium Diamond Plate	For the removal of thicker adhesive, on sand / cement screed whether open or closed. Will cope with large volume areas in a cost effective manner. To be used with softer elastomeric and thin film coatings



DFG700 - 1
Operating Manual

Spare Parts Breakdown

Parts List			
ITEM	QTY	SPE PART NUMBER	DESCRIPTION
1	1	7357B	Carrier Plate- [gear]
2	2	7341	Main Bearing
3	1	7340B	Main Shaft Hub - [gear]
4	1	7342B	Bearing Spacer Main Shaft - [gear]
5	1	7427	Spur Gear - drive
6	1	7343B	Driving Hub Flange - [gear]
7	1	7421	Gear Guard Bottom
8	3	7426	Lipped Seal (driven shaft)
9	1	7423	Gear Guard Top
10	6	7422	Gear Guard Pillar
11	1	7424	Lipped Seal (main shaft-lower)
12	1	7425	Lipped Seal (main shaft-upper)



SPE International Limited
 Honeyholes Lane, Dunholme
 Lincoln, LN2 3SU, England
 Tel: +44 (0) 1673 860 709
 or +44 (0) 1673 860 330
 Fax: +44 (0) 1673 861 119
 Web Site: <http://www.spe-int.com>
 E-mail: sales@spe-int.com

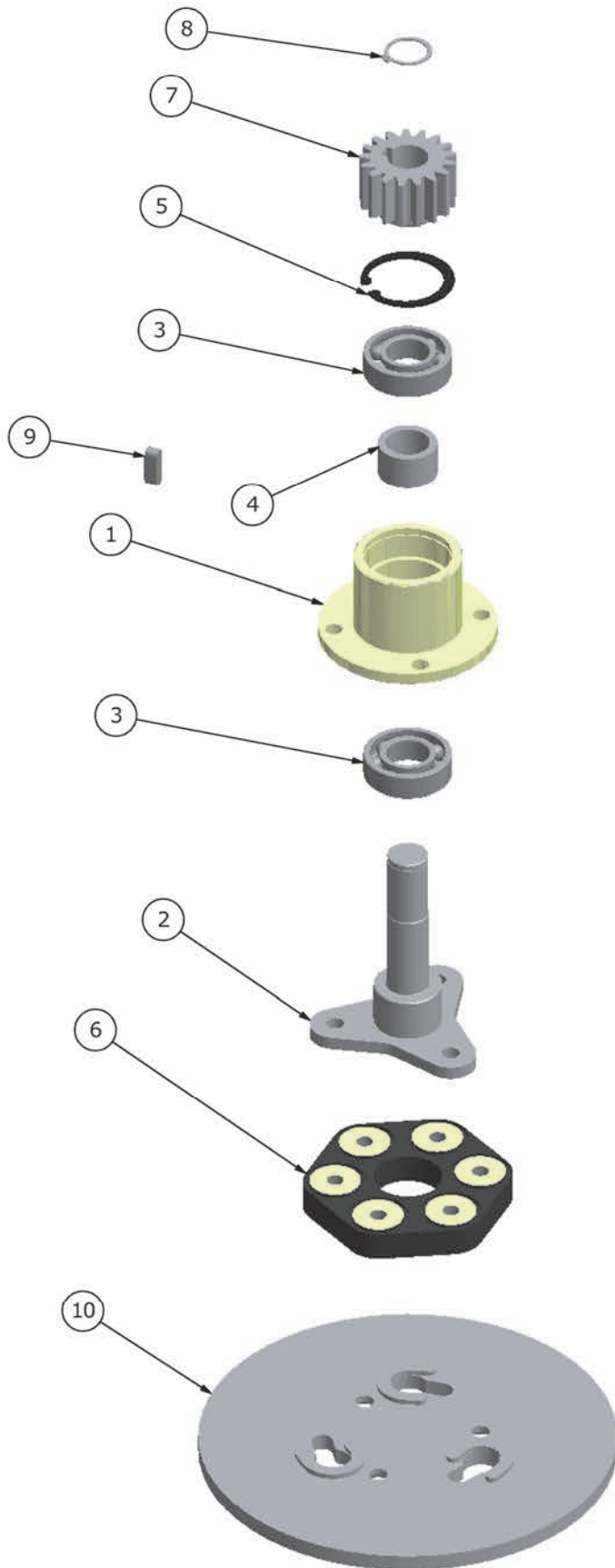
**THIS DRAWING IS THE CONFIDENTIAL COPYRIGHT
 PROPERTY OF SPE INTERNATIONAL LIMITED**

Drawn	TITLE	Head Drive Components	
D.G.A.			
Checked	Drawing No.	MACHINE	
R.C.	DFG-700_HDr-21	DFG 700-1	

*This drawing should not be used,
 copied, shown or handed to a third
 party without the prior written
 consent of SPE International Ltd.*

Parts List

ITEM	QTY	SPE PART NUMBER	DESCRIPTION
1	3	7334B	Bearing Housing - gear
2	3	7335B	Drive Shaft - gear
3	6	5058	Bearing
4	3	7336	Bearing Spacer
5	3	5059	Int. Circlip
6	3	5226	Flexi Coupling
7	3	7428	Spur Gear - driven
8	3	7429	Ext. Circlip
9	3	3065	8x25 Parallel Key
10	3	7337B	Coupling Plate [ccw]

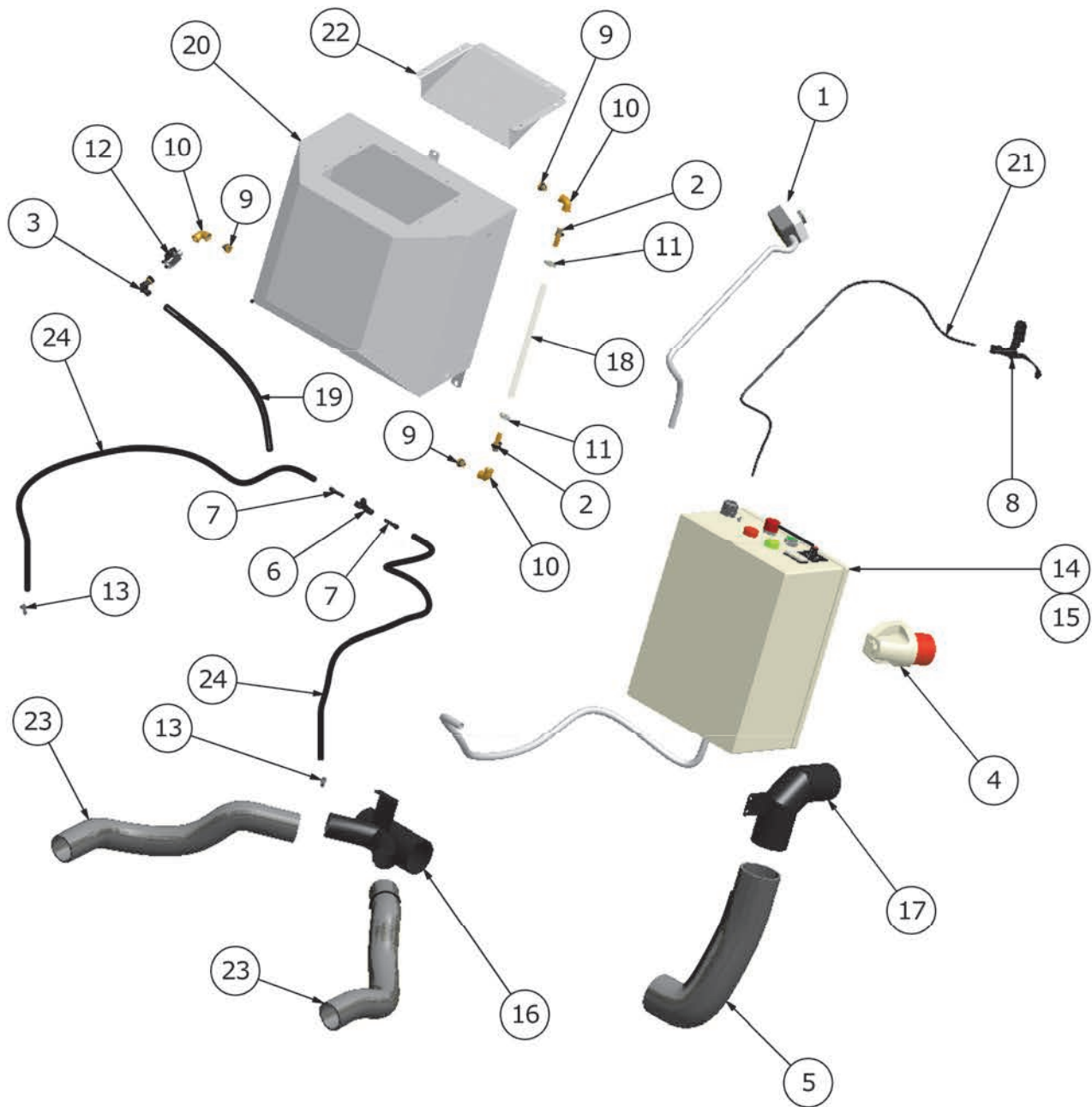



SPE International Limited
 Honeyholes Lane, Dunholme
 Lincoln, LN2 3SU, England
 Tel: +44 (0) 1673 860 709
 or +44 (0) 1673 860 330
 Fax: +44 (0) 1673 861 119
 Web Site: <http://www.spe-int.com>
 E-mail: sales@spe-int.com

THIS DRAWING IS THE CONFIDENTIAL COPYRIGHT PROPERTY OF SPE INTERNATIONAL LIMITED

Drawn	TITLE Grinding Head (3 per machine)	
D.G.A.		
Checked	Drawing No.	MACHINE
R.C.	DFG-700_GrH-21	DFG 700-1

This drawing should not be used, copied, shown or handed to a third party without the prior written consent of SPE International Ltd.



Parts List				Parts List			
ITEM	QTY	SPE PART NUMBER	DESCRIPTION	ITEM	QTY	SPE PART NUMBER	DESCRIPTION
1	1	5018	Switch	13	2	7370	Extended Grommet
2	2	7358	1/4" Hose Tail	14	1	7400	Electrical Panel (400v)
3	1	7359	1/4"x8mm Connector	15	1	7400A	Electrical Panel (440v)
4	1	SP630	Surface Mounted Plug	16	1	7372	Vac 'Y' Piece (50/75)
5	1	7360	Vac Hose (75mm)	17	1	7373	Vac Exhaust (75mm)
6	1	7361	8mm Equal Tee	18	1	7374	Level Tube
7	2	7362	8x6mm Reducer	19	1	7375	Flexi Pipe (8mm)
8	1	7365	Dead Man Lever	20	1	7376	Water Tank
9	3	7366	1/4" Reducing Bush	21	1	7371	Dead Man Cable
10	3	7367	1/4" Elbow	22	1	7377	Tank Filler Plate
11	2	7368	"O" Clip	23	2	7363	Vac Hose (50mm)
12	1	ADAPT 045	1/4" Ball Valve	24	2	7364	Flexi Pipe (6mm)

Note
 Tank Filler Plate (7377)
 and
 1/4" Reducing Bush (7366)
 are inside the water tank

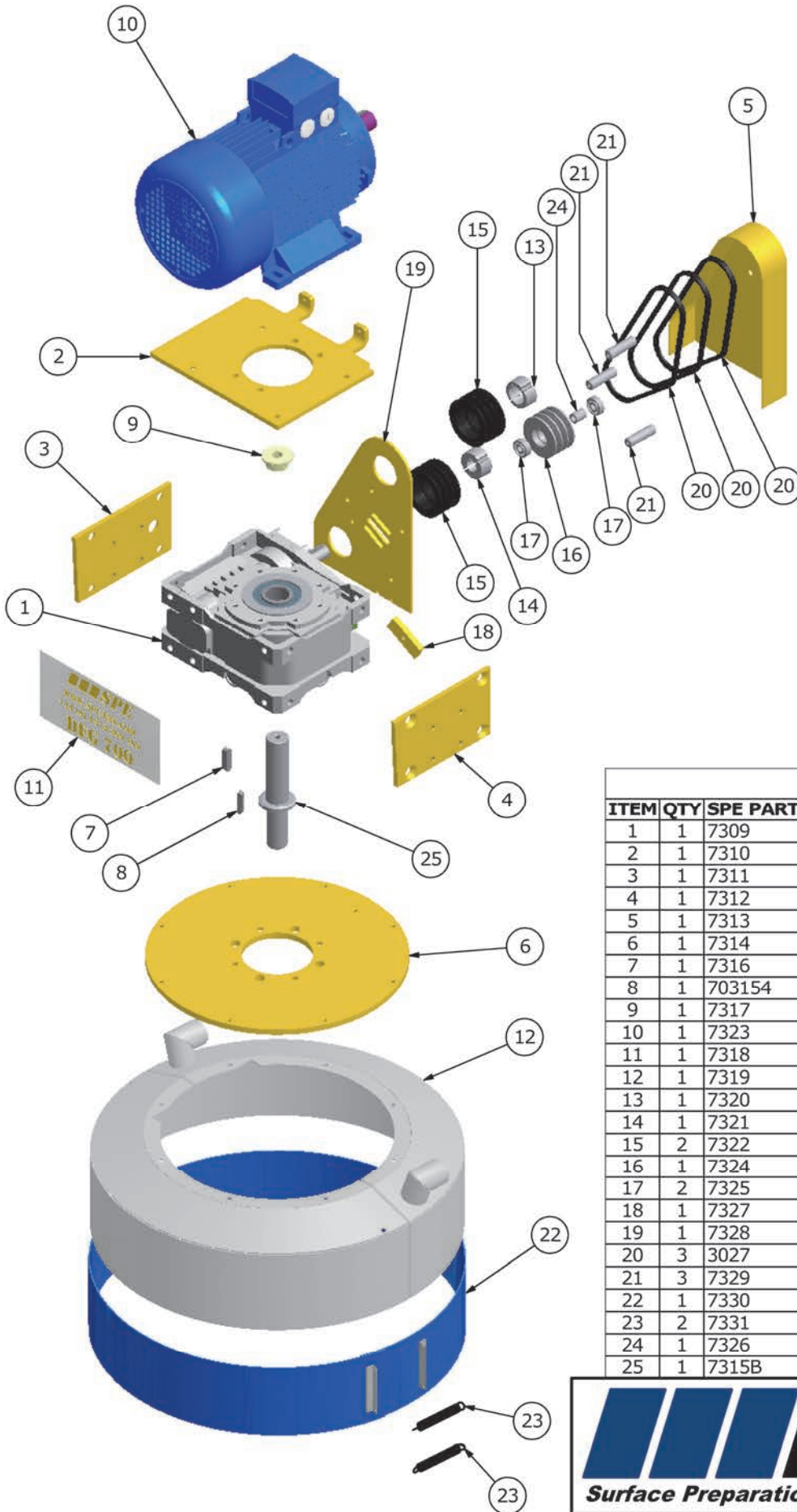


SPE International Limited
 Honeyholes Lane, Dunholme
 Lincoln, LN2 3SU, England
 Tel: +44 (0) 1673 860 709
 or +44 (0) 1673 860 330
 Fax: +44 (0) 1673 861 119
 Web Site: <http://www.spe-int.com>
 E-mail: sales@spe-int.com

THIS DRAWING IS THE CONFIDENTIAL COPYRIGHT PROPERTY OF SPE INTERNATIONAL LIMITED

Drawn	TITLE	Utility Components	
D.G.A.			
Checked	Drawing No.	MACHINE	
R.C.	DFG-700_Utl-21	DFG 700-1	

This drawing should not be used, copied, shown or handed to a third party without the prior written consent of SPE International Ltd.



Parts List

ITEM	QTY	SPE PART NUMBER	DESCRIPTION
1	1	7309	Gearbox
2	1	7310	Motor Plate
3	1	7311	Gearbox Side Plate (RH)
4	1	7312	Gearbox Side Plate (LH)
5	1	7313	Belt Guard
6	1	7314	Gearbox Plate
7	1	7316	12x50 Parallel Key
8	1	703154	10x50 Parallel Key
9	1	7317	Drive Shaft Cap
10	1	7323	Drive Motor
11	1	7318	Gearbox Front Plate
12	1	7319	Grinding Hood
13	1	7320	Taper Lock Bush [1610 - 38mm]
14	1	7321	Taper Lock Bush [1610 - 25mm]
15	2	7322	Motor & G/Box Pulley
16	1	7324	Tensioner Pulley
17	2	7325	Bearing (Tensioner)
18	1	7327	Belt Tensioner Retainer
19	1	7328	Belt Guard Back Plate
20	3	3027	Drive Belt (SPA)
21	3	7329	Belt Guard Post
22	1	7330	Polyurethane Dust Skirt
23	2	7331	Spring
24	1	7326	Tensioner Spacer
25	1	7315B	Gearbox Output Shaft

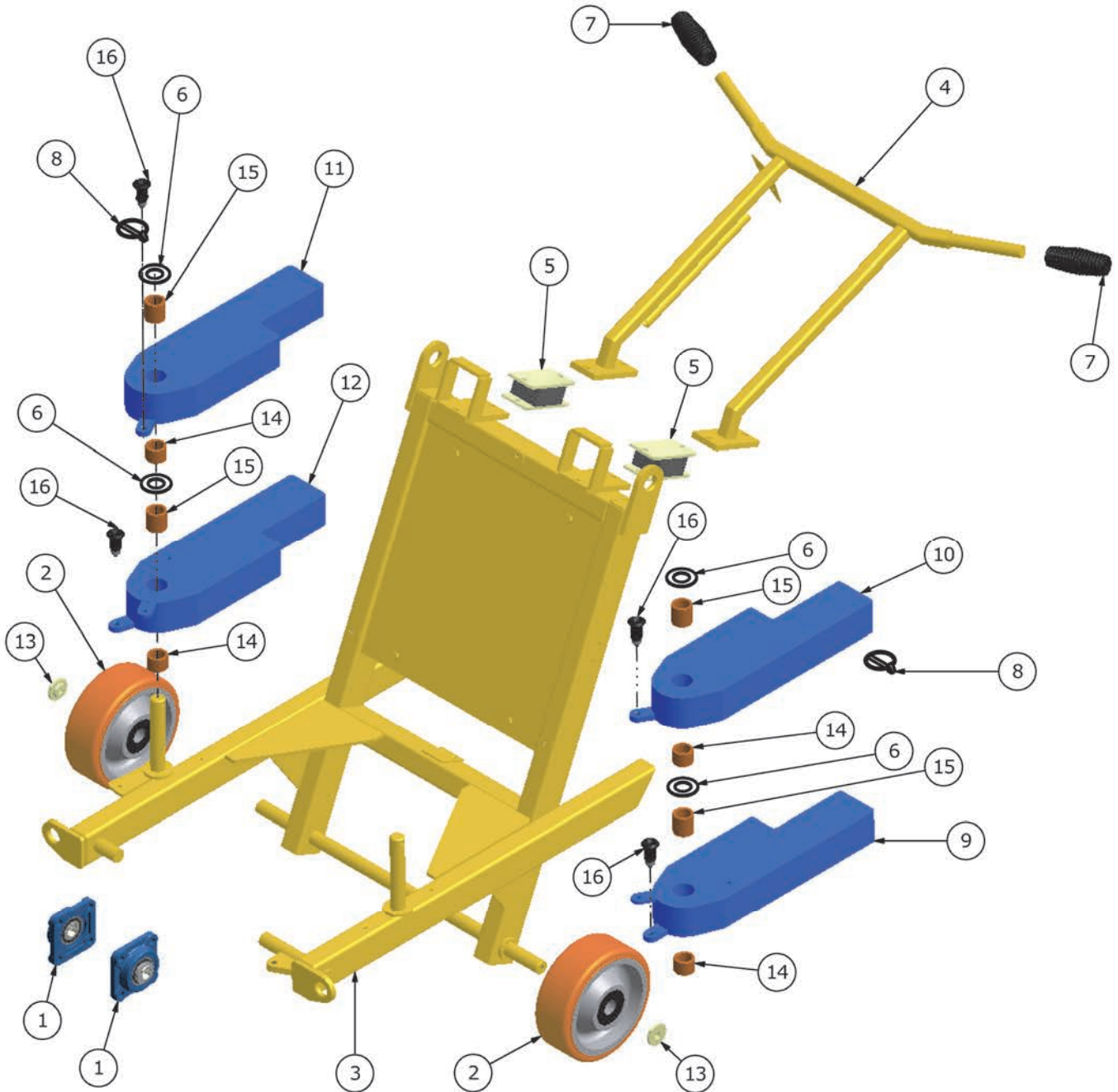
SPE International Limited
 Honeyholes Lane, Dunholme
 Lincoln, LN2 3SU, England
 Tel: +44 (0) 1673 860 709
 or +44 (0) 1673 860 330
 Fax: +44 (0) 1673 861 119
 Web Site: <http://www.spe-int.com>
 E-mail: sales@spe-int.com

THIS DRAWING IS THE CONFIDENTIAL COPYRIGHT PROPERTY OF SPE INTERNATIONAL LIMITED

Drawn	TITLE		Drive Components
D.G.A.			
Checked	Drawing No.	MACHINE	
R.C.	DFG-700_Drv-21	DFG 700-1	

This drawing should not be used, copied, shown or handed to a third party without the prior written consent of SPE International Ltd.

Parts List				Parts List			
ITEM	QTY	SPE PART NUMBER	DESCRIPTION	ITEM	QTY	SPE PART NUMBER	DESCRIPTION
1	2	6012	Flange Bearing	9	1	7302	Weight - Lower L/H
2	2	7306	Wheel	10	1	7303	Weight - Upper L/H
3	1	7300	Frame	11	1	7304	Weight - Upper R/H
4	1	7301	Handlebar	12	1	7305	Weight - Lower R/H
5	2	5017	Flexible Mounting	13	2	07035	Hub Cap
6	4	5098	Spacer	14	4	7307	Bush - Short
7	2	9104	Handlebar Grip	15	4	7308	Bush - Long
8	2	5029	Locking Pin	16	4	7379	Weight Lock Pin

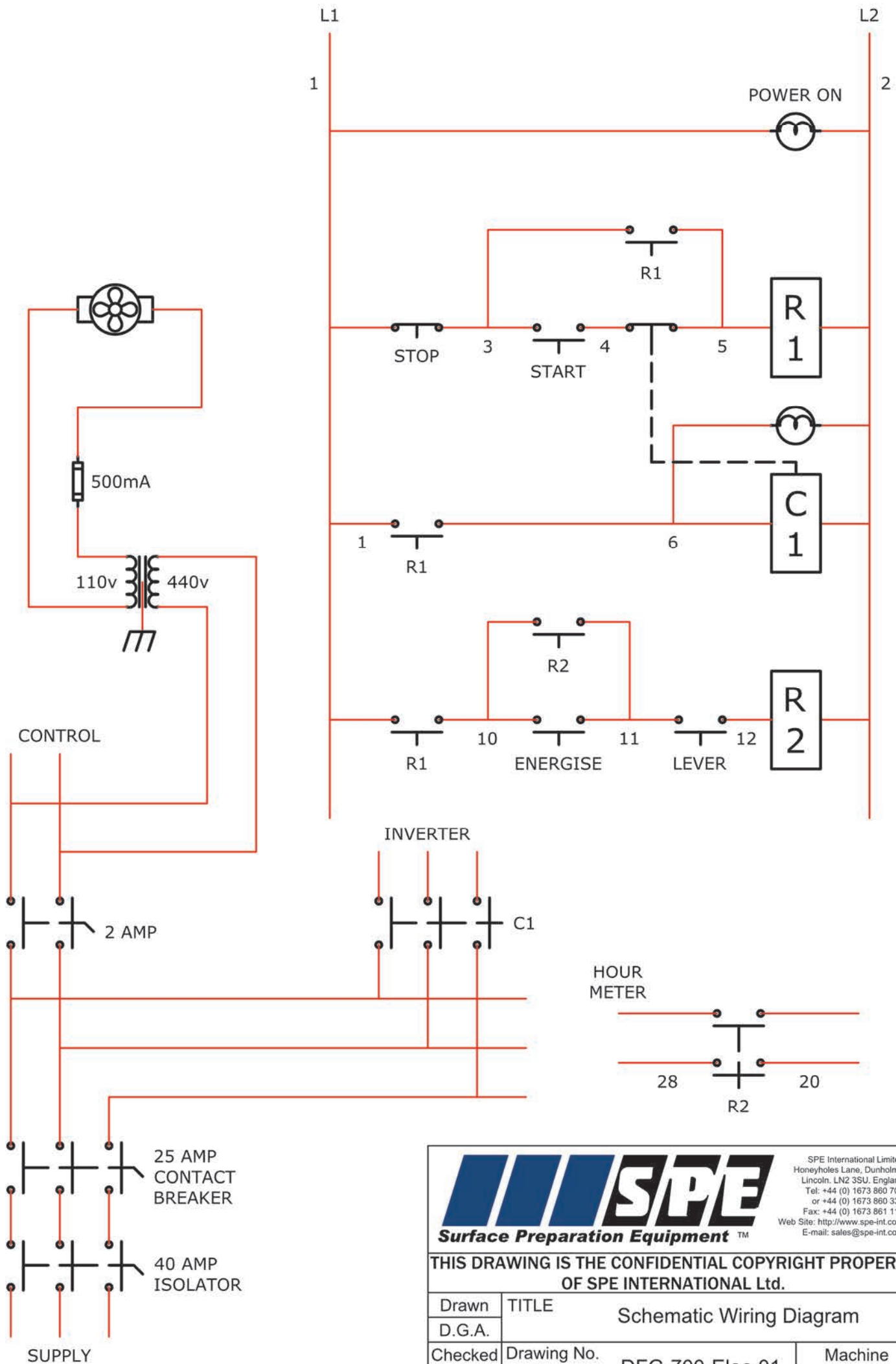


SPE International Limited
 Honeyholes Lane, Dunholme
 Lincoln, LN2 3SU, England
 Tel: +44 (0) 1673 860 709
 or +44 (0) 1673 860 330
 Fax: +44 (0) 1673 861 119
 Web Site: <http://www.spe-int.com>
 E-mail: sales@spe-int.com

**THIS DRAWING IS THE CONFIDENTIAL COPYRIGHT
 PROPERTY OF SPE INTERNATIONAL LIMITED**

Drawn	TITLE		Frame Components
D.G.A.			
Checked	Drawing No.	MACHINE	
R.C.	DFG-700_Frm-21	DFG 700-1	

*This drawing should not be used,
 copied, shown or handed to a third
 party without the prior written
 consent of SPE International Ltd.*



SPE International Limited
 Honeyholes Lane, Dunholme
 Lincoln, LN2 3SU, England
 Tel: +44 (0) 1673 860 709
 or +44 (0) 1673 860 330
 Fax: +44 (0) 1673 861 119
 Web Site: <http://www.spe-int.com>
 E-mail: sales@spe-int.com

THIS DRAWING IS THE CONFIDENTIAL COPYRIGHT PROPERTY OF SPE INTERNATIONAL Ltd.

Drawn	TITLE		Machine
D.G.A.	Schematic Wiring Diagram		
Checked	Drawing No.	DFG-700-Elec-01	DFG 700-1
J.J/D.H			



ELECTRIC PANEL COMPONENTS

QTY	DESCRIPTION	SPE PART NO.
1	Panel & Back Plate	SP83318
1	Frequency Inverter	7401
1	Mains Filter	7402
1	Panel Fan	7403
1	Panel Fan Filter	7404
1	Panel Fan Grille	7405
1	Panel Fan Lead	7406
1	Panel Fan Transformer	7407
1	Contactor (400v only)	SPLC1D25V7
2	Contactor (400v only)	SPLC1D09V7
1	Timer	SPLADR4
1	Limit Switch	SPZCKE05
1	Micro Switch-Body	SPZCKJ1H29
1	Micro Switch-Roller	SPZCKY11
1	Isolator 40 amp	SPVCCF2
1	Stop Button	SPZB4BS44
1	Start Button	SPZB4BA3
1	Start Switch	SPZB4BZ101
1	Stop Switch	SPZB4BZ102
1	Lens	SPZB4BV04
1	Lens	SPZB4BV03
2	Panel Lamp (400v only)	SPZB4BV5
1	Trip-3 Pole 25 amp	SP60HD325
1	Trip-2 Pole 2 amp	SP60HD202
1	Hour Run Meter	SPH7ET-N
1	Speed Con Knob Kit	11124
2	Gland	SPCG/LNM20
1	Gland	SPCG/LNM25
1	Bush Lock Nut	SP608-828
1	Compression Gland	SP542-188
1	Bush Lock Nut	SP608-828
2	Brass Bush 20mm Short	SP608-222
2	Bush Lock Nut	SP608-812
1	415v 32 amp 5 pin Surf Plug	SP630
1	Return Spring	7332
1	Cable Guide	7333
1	Contactor (440v USA only)	SPLC1D25R7
1	Contactor (440v USA only)	SPLC1D09R7
2	Panel Lamp (440v USA only)	SPZB4BV8



DFG700 - 1
Operating Manual

SPECIFICATION SHEET

Type	DFG 700 Electric
Part number	DFG700-1
Power output	11 kw
Voltage	380/415
Cycles	50
Head speed r.p.m.	180~400 variable
Engine/motor speed r.p.m.	2800
Machine dimensions (mm)	
Length	1570
Width	680
Height	1090
Weight (kg)	292