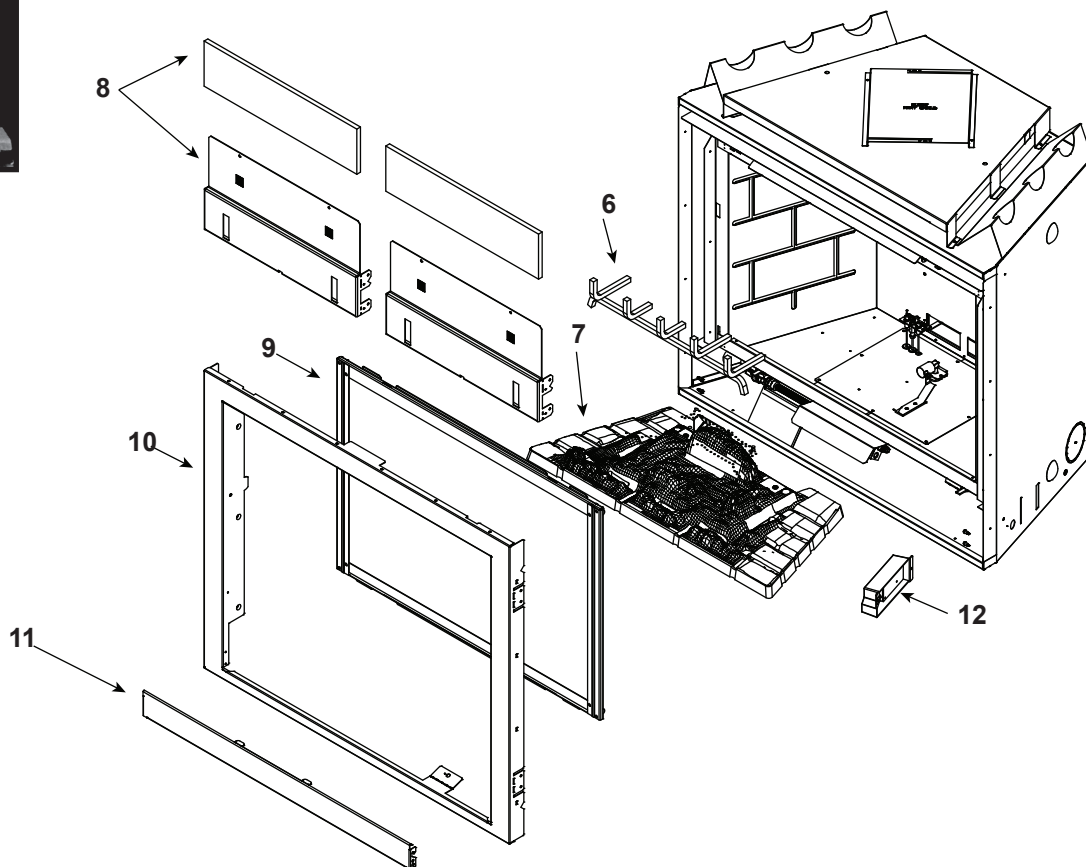


### Log Assembly



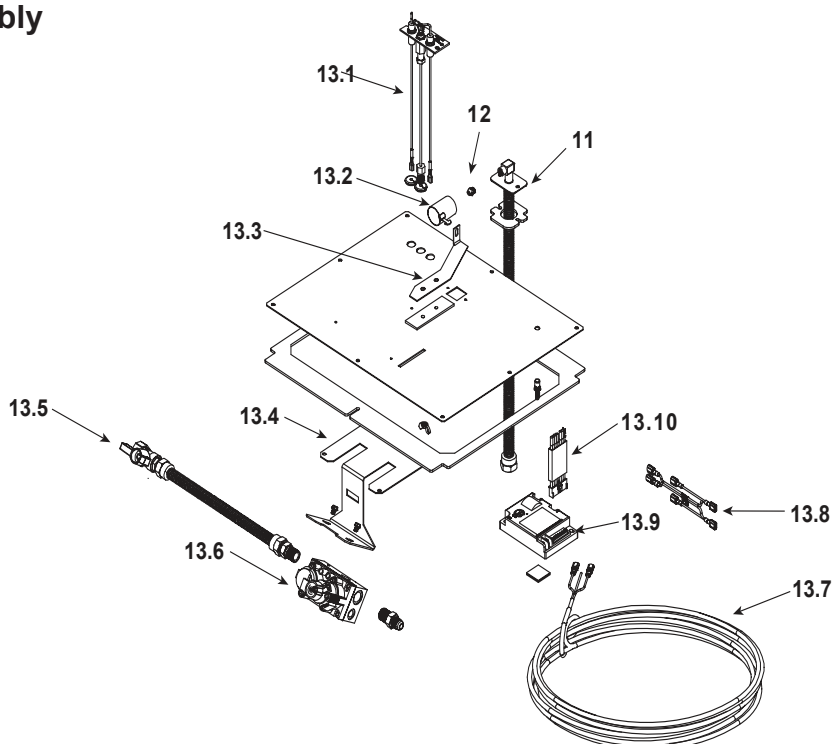
**IMPORTANT: THIS IS DATED INFORMATION.** Parts must be ordered from a dealer or distributor. **Hearth and Home Technologies does not sell directly to consumers.** Provide model number and serial number when requesting service parts from your dealer or distributor.



**Stocked  
at Depot**

ITEM	COMMON PARTS	COMMENTS	PART NUMBER	
	Log Set Assembly		LOGS-6000G	<b>Y</b>
1	Log 1	<b>No longer available, Must order complete assembly</b>	SRV2103-107	
2	Log 2		SRV2103-108	
3	Log 3		SRV2103-110	
4	Log 4		SRV2103-109	
5	Log 5		SRV2103-111	
6	Grate		2103-005	
7	Burner NG, LP		SRV2103-007	
8	Non-combustible Board	<b>No longer available</b>	2092-107A	
9	Glass Door Assembly		GLA-6000G	<b>Y</b>
10	Surround	<b>No longer available</b>	2092-103	
11	Surround cover		2092-108	
12	Junction Box		SRV4021-013	<b>Y</b>

### #13 Valve Assembly



IMPORTANT: THIS IS DATED INFORMATION. Parts must be ordered from a dealer or distributor. **Hearth and Home Technologies does not sell directly to consumers.** Provide model number and serial number when requesting service parts from your dealer or distributor.



**Stocked  
at Depot**

ITEM	COMMON PARTS	COMMENTS	PART NUMBER	
13.1	Pilot Assembly NG		SRV2090-012	Y
	Pilot Assembly LP		2090-013	Y
13.2	Shutter Assembly		2026-130	Y
13.3	Shutter Bracket Assembly		2026-017	Y
13.4	Valve Bracket	No longer available	2110-102	
13.5	Flex Ball Valve Assembly		SRV302-320	Y
13.6	Valve NG		750-500	Y
	Valve LP		750-501	Y
13.7	Wire Assembly		2045-024	Y
13.8	Remote Wire Assembly		2103-013	Y
13.9	Module		SRV593-592	Y
13.10	Wire Assembly		SRV593-590	Y
13.11	18" Flexible Gas Connector		530-302A	Y
13.12	Burner Orifice NG (#37C)		582-837	Y
	Burner Orifice LP (#52C)		SRV582-852	Y
	Battery Pack		SRV593-594	Y
	3 Volt Transformer		SRV593-593	Y

Additional service part numbers appear on following page.



## Service Parts

# 6000GCF-IPI

## No one builds a better fire

**Beginning Manufacturing Date: June 2006**

**Ending Manufacturing Date: Aug 2009**

**IMPORTANT: THIS IS DATED INFORMATION.** Parts must be ordered from a dealer or distributor. **Hearth and Home Technologies does not sell directly to consumers.** Provide model number and serial number when requesting service parts from your dealer or distributor.



## Stocked at Depot

[illegible]