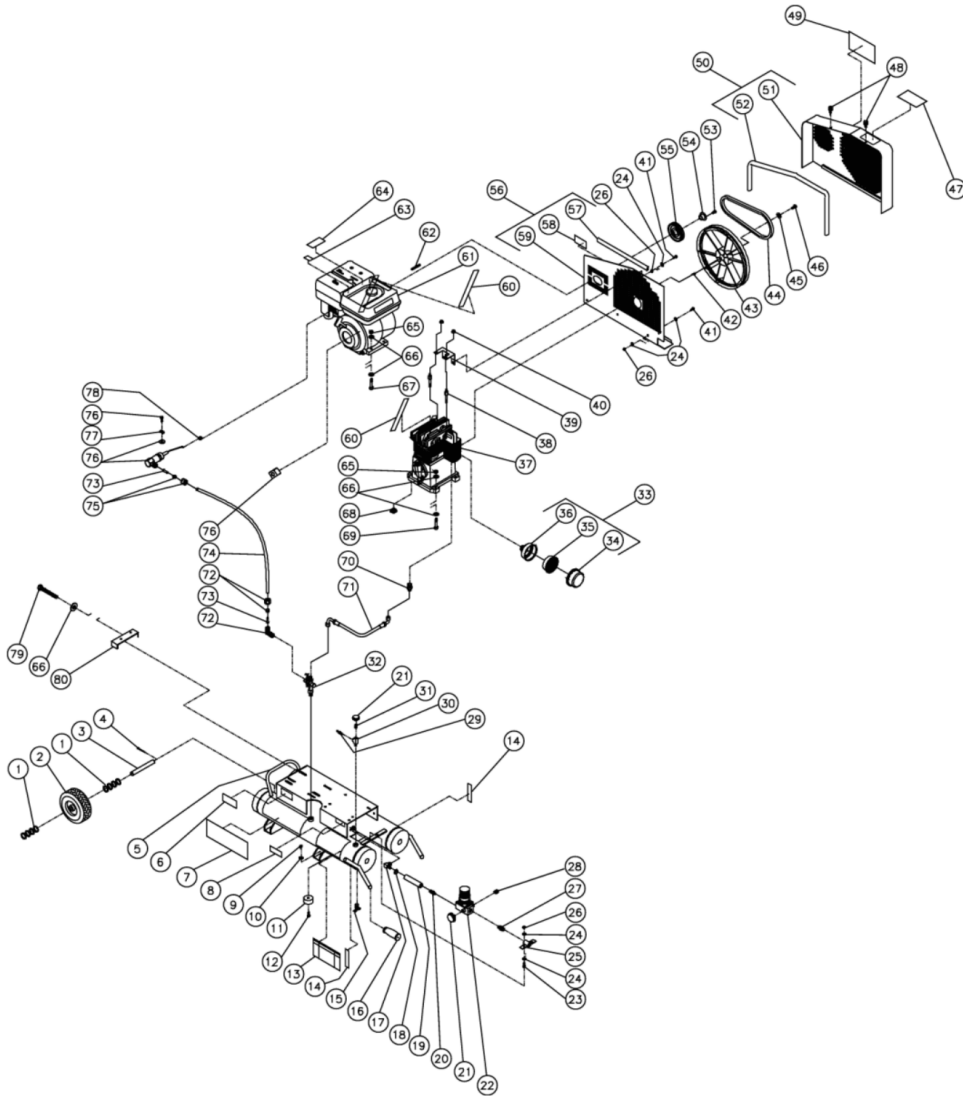




AC2-PH08-08M

TANK ASSEMBLY



Id	Item #	Description	Quantity	Rev	Comments
1	28-0008	WASHER	8		
2	14-0017	WHEEL	1		
3	20-0420	AXLE	1		
4	43-0092	COTTER PIN	2		
5	854-0051	AIR TANK ASSEMBLY (INC. 8, 13, 14)	1		
6	N/A	DECAL-DATA PLATE	1		
7	34-0814	DECAL-MI-T-M	1		

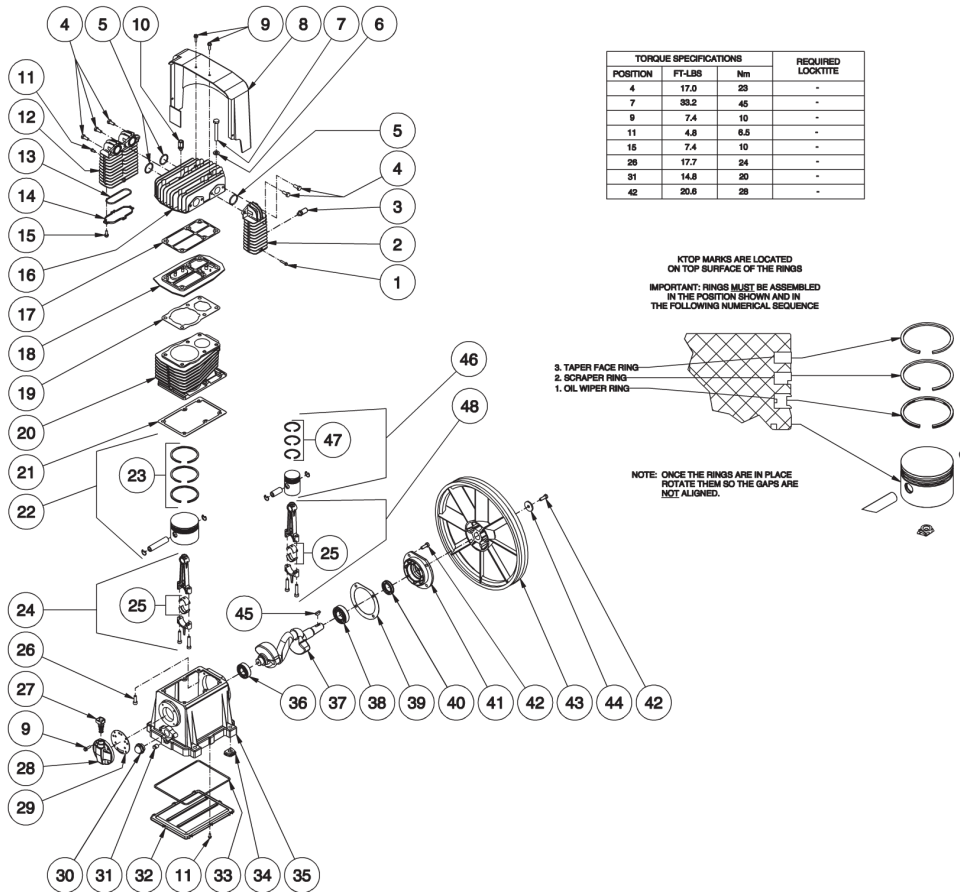
Id	Item #	Description	Quantity	Rev	Comments
8	N/A Sep.	DECAL- WARNING: HOT SURFACE (SEE 34-9016)	1		
9	30-0155	LOCKNUT	4		
10	28-0002	WASHER	4		
11	14-0069	ISOLATOR	4		
12	27-0015	BOLT	4		
13	N/A Sep.	DECAL- DANGER/WARNING/CAUTION (SEE 34-9016)	1		
14	N/A Sep.	DECAL- DRAIN TANK (SEE 34-9016)	2		
15	23-0312	DRAIN VALVE	2		
16	7-0151	HANDLE GRIPS	2		
17	23-0418	ELBOW	1		
18	42-0011	HOSE CLAMP	2		
19	15-0007	HOSE *(ONE FOOT REQUIRED)	1		
20	23-0105	HOSE BARB	1		
21	22-0271	PRESSURE GAUGE	2		
22	22-0231	ADJUSTABLE REGULATOR	1		
23	27-0067	BOLT	2		
24	24-0003	WASHER	14		
25	20-0421A01	REGULATOR MOUNTING BRACKET	1		
26	30-0157	LOCKNUT	7		
27	24-0010	NIPPLE	1		
28	N/A Sep.	REGULATOR PLUG (SEE 22-0231)	1		
29	22-0267	SAFETY RELIEF VALVE	1		
30	23-0127	STREET TEE	1		
31	23-0111	BUSHING	1		
32	22-0270	PILOT VALVE	1		
33	19-0219	AIR FILTER ASSEMBLY (W/COMPRESSOR) (INC. 34-36)	1		
34	N/A Sep.	FILTER HOUSING (W/COMPRESSOR) (SEE 19-0086)	1		
35	19-0220	FILTER ELEMENT	2		
36	N/A Sep.	FILTER BODY (W/ COMPRESSOR) (SEE 19-0086)	1		
37	3-0174	COMPRESSOR	1		
38	27-8921	STUD	2		
39	20-0457A01	BELTGUARD BRACKET	1		
40	30-3030	FLANGE NUT	2		
41	27-0066	BOLT	5		
42	43-0102	WOODDURF KEY (W/ COMPRESSOR)	1		
43	10-0095	FLYWHEEL (W/ COMPRESSOR)	1		
44	11-0044	DRIVE BELT	1		
45	28-1032	FLATWASHER FLYWHEEL (W/COMPRESSOR)	1		
46	27-8433	BOLT (W/ COMPRESSOR)	1		

Id	Item #	Description	Quantity	Rev	Comments
47	N/A Sep.	DECAL- OPERATING INSTRUCTIONS/ GAS (SEE 34-9016)	1		
48	33-0197	FASTENER	2		
49	N/A Sep.	DECAL- MAINTENANCE INSTRUCTIONS (SEE 34-9016)	1		
50	854-0026	BELTGUARD ASSEMBLY (INC. 51, 52)	1		
51	N/A Sep.	BELTGUARD COVER (SEE 854-0026)	1		
52	33-0020	EDGING *(FIVE FEET REQUIRED)	1		
53	27-0017	BOLT	3		
54	9-0076	BUSHING	1		
55	10-0121	DRIVE PULLEY	1		
56	854-0024	BELTGUARD BACK ASSEMBLY (INC. 57-59)	1		
57	33-0020	EDGING *(THREE FEET REQUIRED)	1		
58	N/A Sep.	DECAL- WARNING:BELTGUARD IN PLACE (SEE 34-9016)	1		
59	N/A Sep.	BELTGUARD BACK (SEE 854-0024)	1		
60	N/A Sep.	DECAL- CHECK OIL TAPE (SEE 34-9016)	1		
61	1-0037	ENGINE- 8.0 H.P HONDA	1		
62	43-0078	KEY	1		
63	N/A Sep.	DECAL- CAUTION: ALLOW TO COOL (SEE 34-9016)	1		
64	N/A Sep.	DECAL- WARNING: MUFFLER HOT (SEE 34-9016)	1		
65	30-0159	NUT	8		
66	28-0023	WASHER	17		
67	27-0121	BOLT	4		
68	N/A Sep.	RUBBER ISOLATOR (SEE 3-0174)	4		
69	27-0122	BOLT	4		
70	24-0160	ADAPTER	1		
71	15-0188	HOSE	1		
72	23-0316	ELBOW	1		
73	23-0425	TUBE INSERT SUPPORT	2		
74	15-0238	TUBE *(TWO FEET REQUIRED)	1		
75	23-0315	COMPRESSION NUT	1		
76	33-0413	AIR THROTTLE CONTROL	1		
77	45-0084	ENGINE THROTTLE CLIP	1		
78	62-0126	AIR THROTTLE CONTROL ADAPTER	1		
79	27-0576	BOLT	1		
80	20-0650A01	BELT TENSIONER PLATE	1		
	34-9016	SAFETY DECAL KIT (INC. 8, 13, 14, 47, 49, 58, 60, 63-64)			
		*MUST ORDER IN ONE FOOT LENGTHS			



AC2-PH08-08M

PUMP



TORQUE SPECIFICATIONS			REQUIRED LOCKTITE
POSITION	FT-LBS	Nm	
4	17.0	23	-
7	33.2	45	-
9	7.4	10	-
11	4.8	6.5	-
15	7.4	10	-
28	17.7	24	-
31	14.8	20	-
42	20.6	28	-

KTOP MARKS ARE LOCATED ON TOP SURFACE OF THE RINGS

IMPORTANT: RINGS MUST BE ASSEMBLED IN THE POSITION SHOWN AND IN THE FOLLOWING NUMERICAL SEQUENCE

3. TAPER FACE RING
2. SCRAPER RING
1. OIL WIPER RING

NOTE: ONCE THE RINGS ARE IN PLACE ROTATE THEM SO THE GAPS ARE NOT ALIGNED.

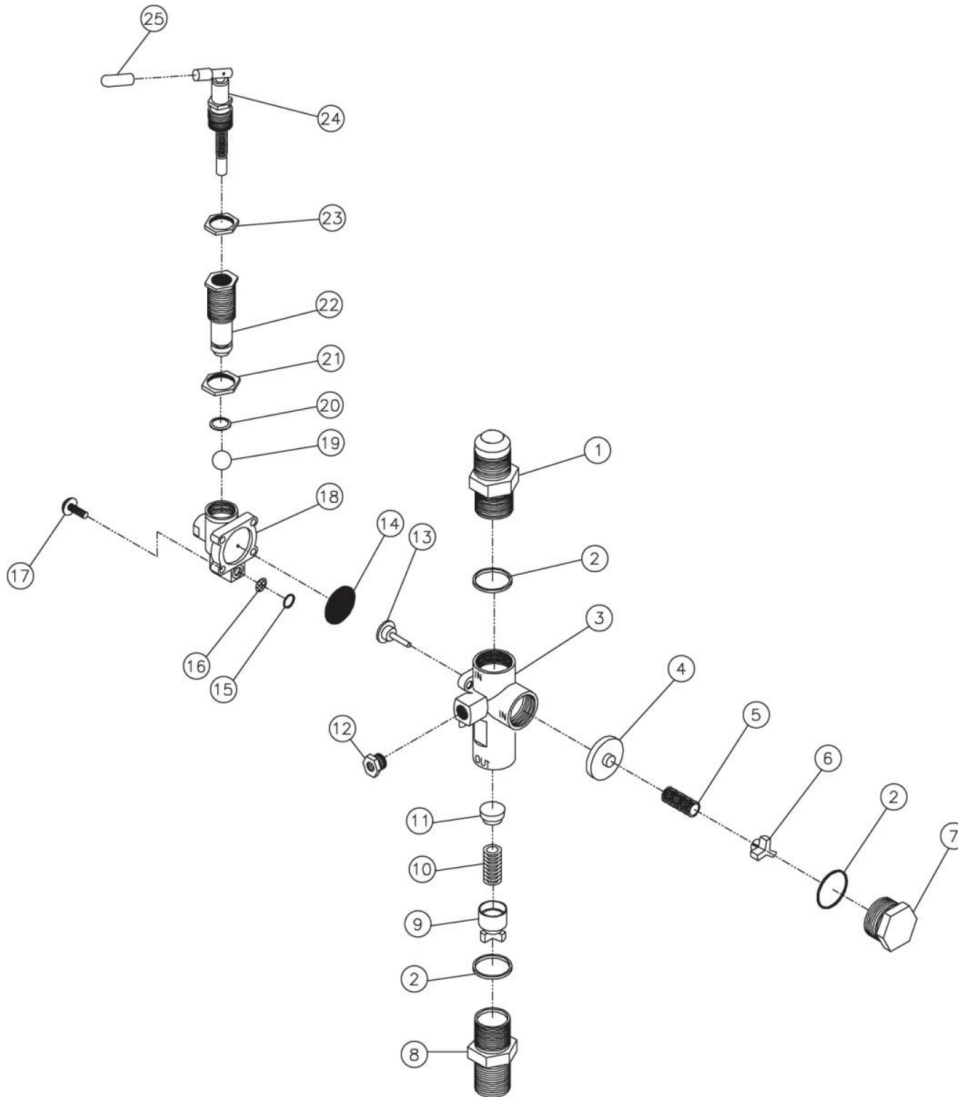
Id	Item #	Description	Quantity	Rev	Comments
1	27-8807	BOLT	1		
2	46-1156	AFTER COOLER	1		
3	22-0385	SAFETY VALVE	1		
4	27-8032	BOLT	5		
5	25-0439	O-RING	3		
6	28-1021	WASHER	6		
7	27-8934	BOLT	6		
8	N/A	AIR SHROUD	1		
9	27-8002	BOLT	6		
10	22-0386	SAFETY VALVE	1		
11	27-9575	SCREW	9		

Id	Item #	Description	Quantity	Rev	Comments
12	46-1157	INTER COOLER	1		
13	25-0440	O-RING	1		
14	46-0816	INTER COOLER COVER	1		
15	27-8906	SCREW	4		
16	46-1158	PUMP HEAD	1		
17	N/A Sep.	HEAD GASKET (SEE 70-0240)	1		
18	22-0283	VALVE PLATE ASSEMBLY	1		
19	N/A Sep.	CYLINDER GASKET (SEE 70-0240)	1		
20	46-0817	CYLINDER	1		
21	N/A Sep.	CRANKCASE GASKET (SEE 70-0240)	1		
22	N/A	COMPLETE PISTON	1		
23	70-0238	RING SET KIT	1		
24	N/A	CONNECTING ROD	1		
25	N/A	CONNECTING ROD BEARING	2		
26	27-8194	SCREW	6		
27	46-0818	CRANKCASE FILL HOLE PLUG W/ O-RING	1		
28	46-0819	OIL FILL END CAP	1		
29	N/A Sep.	OIL FILL END CAP GASKET (SEE 70-0240)	1		
30	46-0820	OIL LEVEL SIGHT GLASS W/ O-RING	1		
31	39-0106	OIL DRAIN PLUG	1		
32	N/A	OIL PAN	1		
33	N/A Sep.	OIL PAN O-RING (SEE 70-0240)	1		
34	46-0821	ISOLATOR	4		
35	N/A	CRANKCASE	1		
36	48-0060	BALL BEARING	1		
37	N/A	PISTON CRANKSHAFT	1		
38	48-0024	BALL BEARING	1		
39	N/A Sep.	FRONT END CAP GASKET (SEE 70-0240)	1		
40	26-0208	CRANKSHAFT SEAL	1		
41	46-0822	FRONT END CAP	1		
42	27-8033	BOLT	5		
43	10-0130	FLYWHEEL	1		
44	28-1032	WASHER	1		
45	43-0102	KEY	1		
46	N/A	COMPLETE PISTON	1		
47	70-0239	RING SET KIT	1		
48	N/A	CONNECTING ROD	1		
KIT	70-0240	GASKET KIT (INC. 5, 13, 17, 19, 21, 29, 33, 39)			



AC2-PH08-08M

PILOT VALVE



Id	Item #	Description	Quantity	Rev	Comments
1	N/A	INLET PORT FITTING	1		
2	N/A Sep.	O-RING (SEE 70-0241)	3		
3	N/A	MAIN BODY	1		
4	N/A Sep.	PISTON ASSEMBLY-UNLOADER VALVE (SEE 70-0241)	1		
5	N/A Sep.	SPRING-UNLOADER VALVE (SEE 70-0241)	1		
6	N/A	SPRING SEAT-UNLOADER VALVE	1		
7	N/A	CAP	1		

Id	Item #	Description	Quantity	Rev	Comments
8	N/A	DISCHARGE PORT FITTING	1		
9	N/A	SPRING SEAT ASSEMBLY-CHECK VALVE	1		
10	N/A Sep.	SPRING-CHECK VALVE (SEE 70-0241)	1		
11	N/A Sep.	PISTON-CHECK VALVE (SEE 70-0241)	1		
12	23-0419	MUFFLER	1		
13	N/A Sep.	STEM UNLOADER (SEE 70-0241)	1		
14	N/A Sep.	DIAPHRAM (SEE 70-0241)	1		
15	N/A Sep.	O-RING (SEE 70-0241)	1		
16	N/A Sep.	SCREEN (SEE 70-0241)	1		
17	N/A	SCREW W/WASHER	4		
18	N/A	PILOT BODY	1		
19	N/A Sep.	BALL (SEE 70-0241)	1		
20	N/A Sep.	O-RING (SEE 70-0241)	1		
21	N/A	DIFFERENTIAL ADJUSTING LOCKNUT	1		
22	N/A	DIFFERENTIAL ADJUSTING NUT	1		
23	N/A	PRESSURE ADJUSTING LOCKNUT	1		
24	N/A Sep.	PRESSURE ADJUSTING TOGGLE ASSEMBLY (SEE 70-0241)	1		
25	N/A	RED TOGGLE COVER	1		
KIT	70-0241	REPAIR KIT (INC. 2 EACH 3, 4-5, 10-11, 13-16, 19-20, 24			