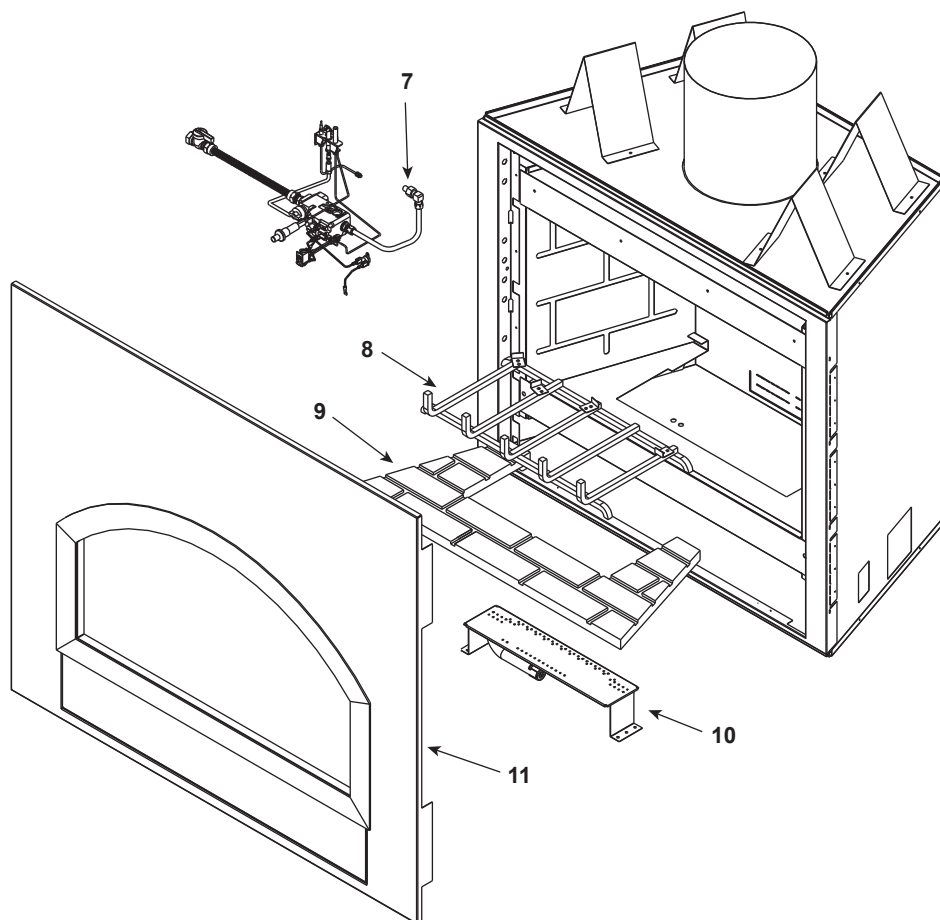
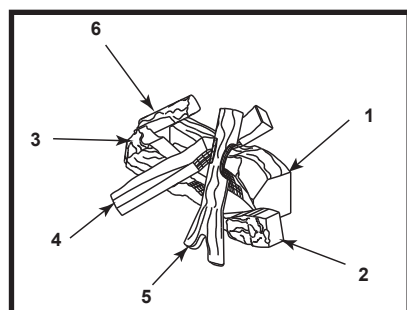


Log Set Assembly



IMPORTANT: THIS IS DATED INFORMATION. Parts must be ordered from a dealer or distributor. **Hearth and Home Technologies does not sell directly to consumers.** Provide model number and serial number when requesting service parts from your dealer or distributor.



**Stocked
at Depot**

ITEM	DESCRIPTION	COMMENTS	PART NUMBER	
1	Log 1		SRV530-711	
2	Log 2		SRV446-702	
3	Log 3		SRV446-703	
4	Log 4		SRV446-704	
5	Log 5		SRV446-705	
6	Log 6		SRV446-706	
7	Orifice NG (#39A)	No longer available	066-800	
	Orifice LP (#53A)		060-801	Y
8	Grate Assembly		446-360A	
9	Refractory	No longer available	SRV446-339	
10	Burner NG	No longer available	094-336A	
	Burner, LP	No longer available	094-335A	
11	Surround	No longer available	094-220A	



Service Parts

6000ARCH

No one builds a better fire

Beginning Manufacturing Date: July 1995
Ending Manufacturing Date: Nov 1996

IMPORTANT: THIS IS DATED INFORMATION. Parts must be ordered from a dealer or distributor. **Hearth and Home Technologies does not sell directly to consumers.** Provide model number and serial number when requesting service parts from your dealer or distributor.



Stocked at Depot

ITEM	DESCRIPTION	COMMENTS	PART NUMBER	
	Burner Tube		570-302A	Y
	Glass Door Assembly	No longer available	GLA-ARCH	
		Rectangular/ Wing nuts	GLA-6XL	Y
		Rectangular/Eye bolts	GLA-6FL	Y
	Junction Box		100-250A	Y
	Piezo Ignitor		291-513	Y
	Pilot Assembly NG		446-512A	Y
	Pilot Assembly LP		446-513A	Y
	Thermopile		2103-512	Y
	Pilot Tube		SRV446-301	Y
	Remote		SMART-STAT-HNG	
	Touch Up Paint		TUPB-12	
	Valve NG		040-500	Y
	Valve LP		040-501	
	Conversion Kit NG	No longer available	NGK-6CF	
	Conversion Kit LP	No longer available	LPK-6CF	
	Pilot Orifice NG		SRV446-505	Y
	Pilot Orifice LP		SRV446-517	Y
	Regulator NG		SRV060-518	Y
	Regulator LP		060-519	Y