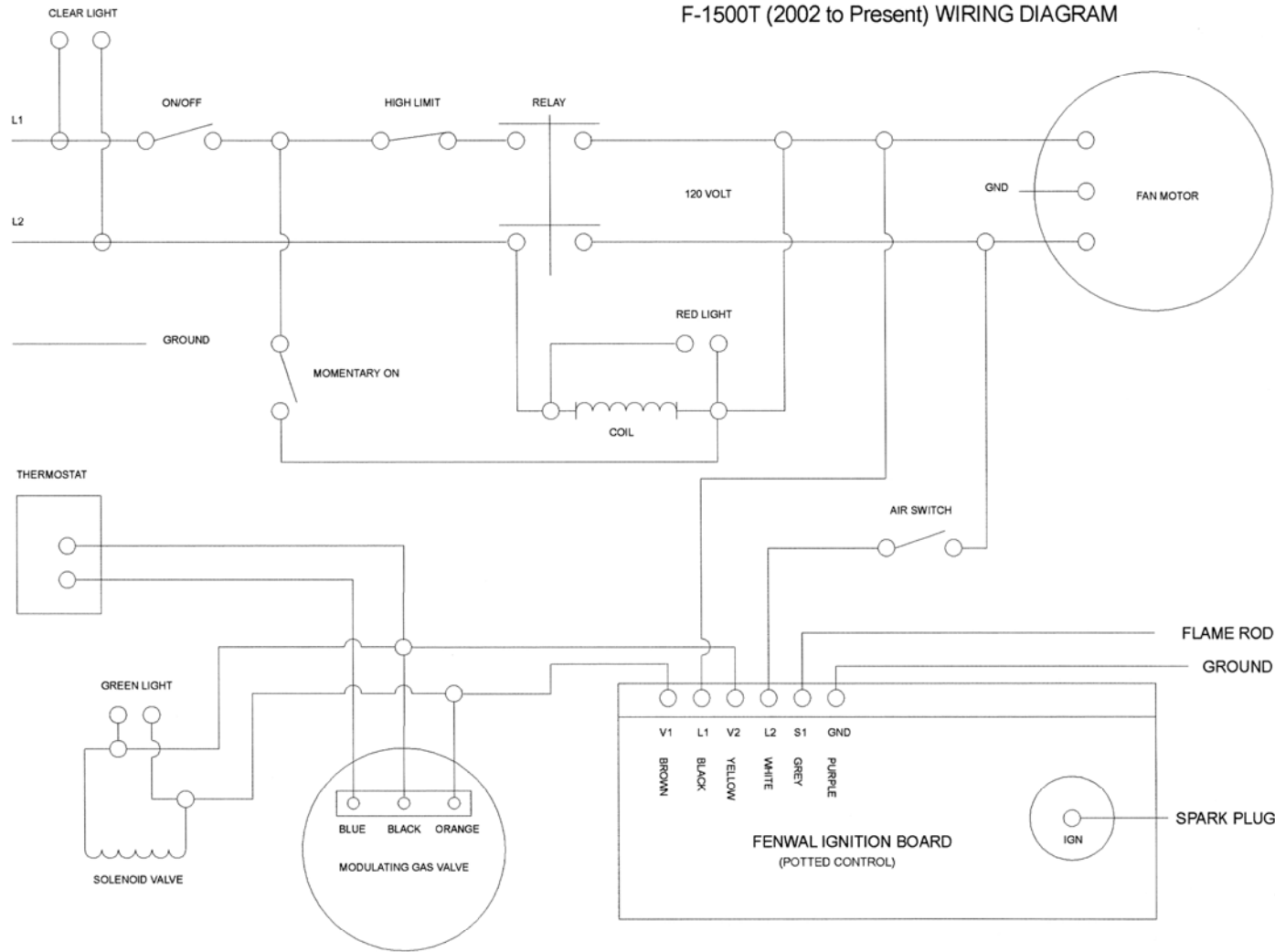


PARTS LIST

F-1500T CONSTRUCTION HEATERS

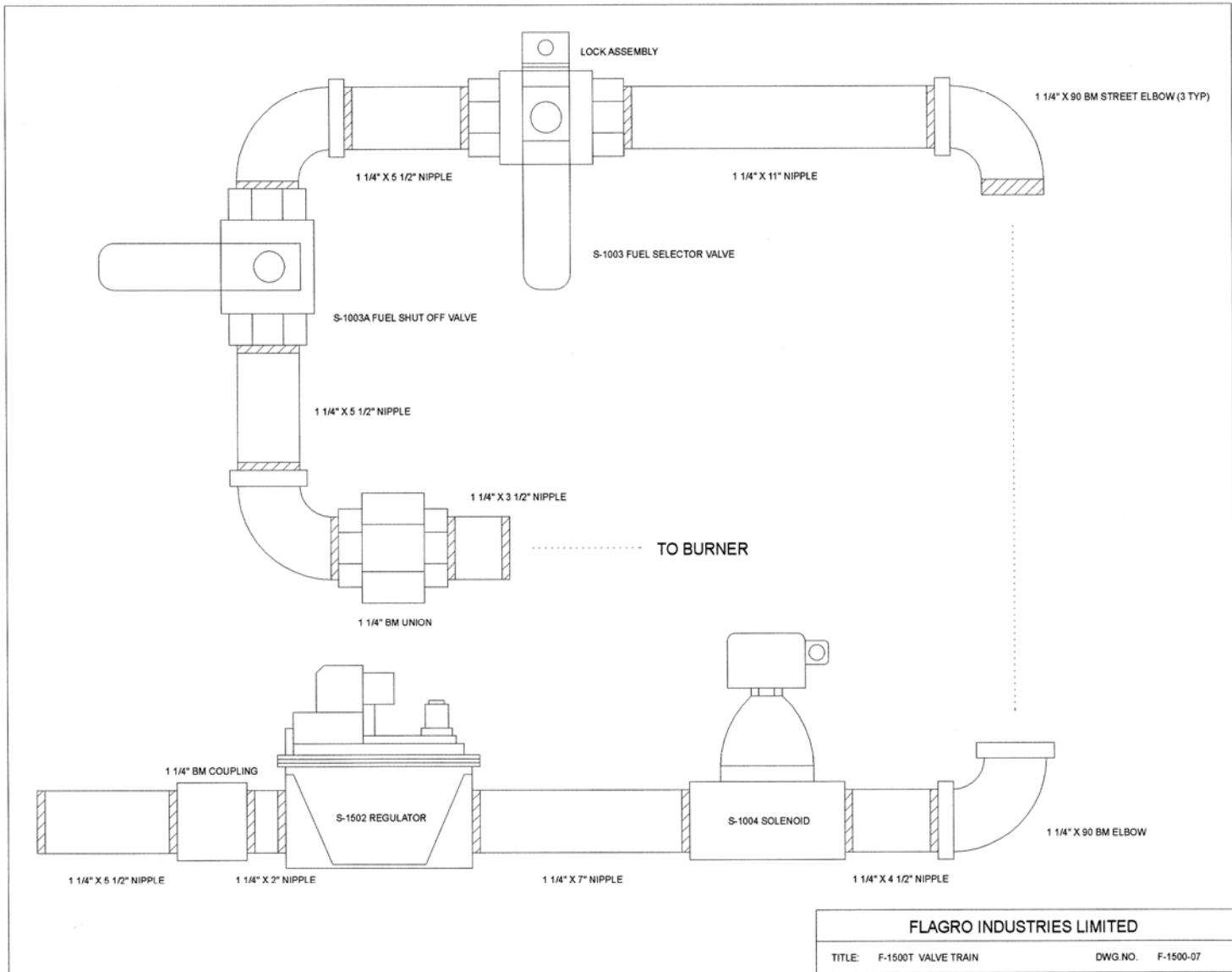
S-1000	1 HP Motor	
S-1001	Fan blade	
S-1502	Modulating Regulator Valve	
S-1002FS	S.S. Filter Screen	
S-1002T	Modulating regulator hi/low fire	
S-1003	Fuel selector valve	
S-1003A	Fuel shut-off valve	
67871A	Solenoid valve cover	
S-1004	Solenoid valve	
S-1505	Burner	
S-406	Flame rod (S-1006)	
S-1007	Flame rod wire	
S-408A	Long reach igniter (S-1008)	
S-1009	Ignition wire	
S-410	High temperature limit (S-1010)	
S-411	Off-run-start switch (S-1011)	
S-412	Main relay (S-1012)	
S-414	Air proving switch (S-1014)	
S-415A	Ignition control-120V (Fenwal) old (S-1015)	
S-415P	Potted ignition control 120V (Fenwal 02)	
S-416	Thermostat (S-1016)	
S-1019	Screen assembly	
S-1020A	Clear indicator light	
S-1020B	Red indicator light	
S-1020C	Green indicator light	
S-1021	Power cord including plug	
S-1022	Rubber wheel - 8"	
B31R.125	1-1/4" Second Stage Regulator	
S54180-20	1-1/4" x 15-ft Hose Assembly	

F-1500T (2002 to Present) WIRING DIAGRAM

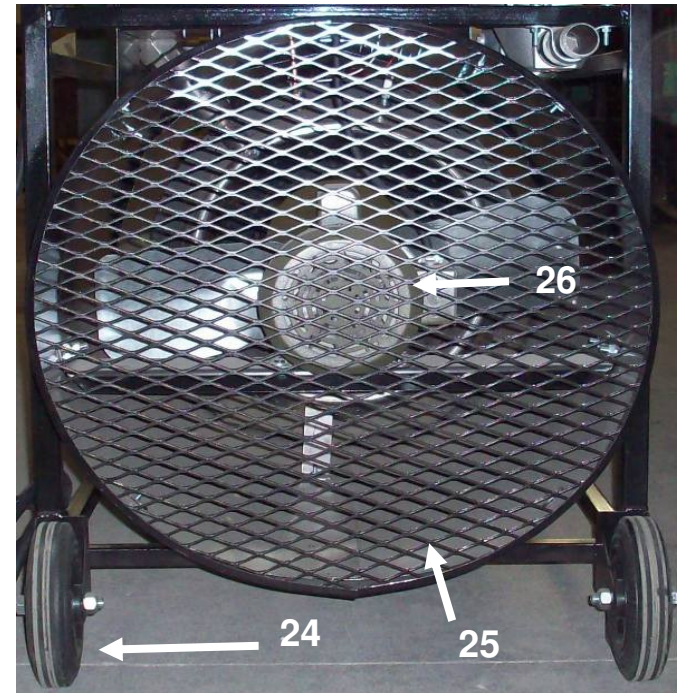
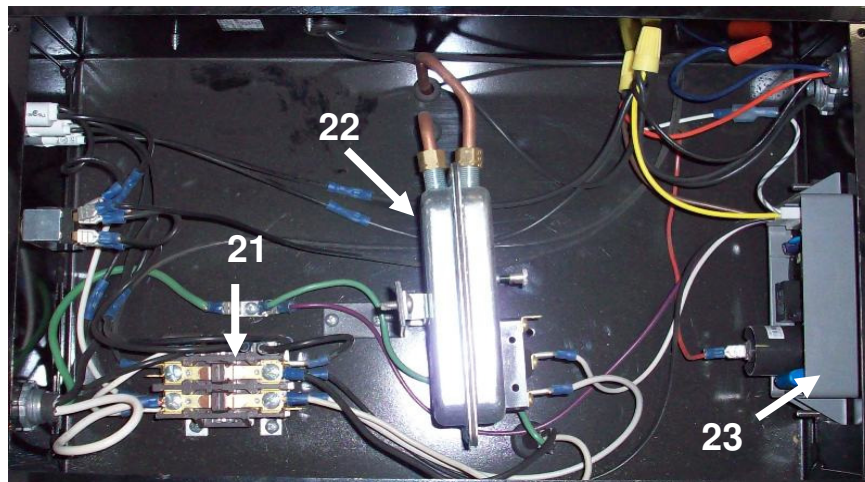
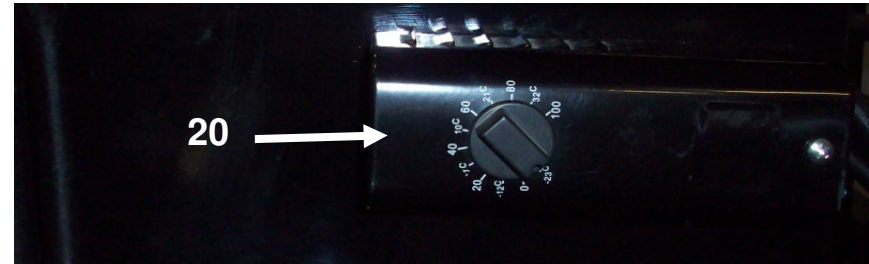
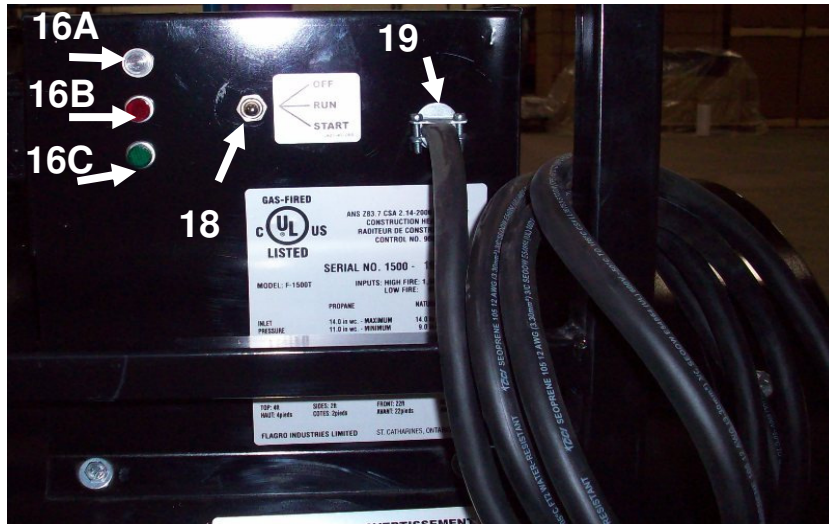


Note: If any of the original wire as supplied with the appliance must be replaced it must be replaced with type 14g TEW wire or its equivalent.

FLAGRO INDUSTRIES LIMITED		
TITLE: F-1500T (2002) - WIRING DIAGRAM	DWG. NO. 1500T-20	



F-1500T Parts List



F-1500T Parts List



<u>Item #</u>	<u>Description</u>	<u>P/N</u>
1	1 1/4" X 3 1/2" Nipple	40-113G3.5
2	1 1/4" BM Union	40-104-20
3	1 1/4" X 90 BM Street Elbow	40-116-20
4	1 1/4" X 5 1/2" Nipple	40-113G5.5
5	Fuel Shut Off Valve	S-1003A
6	Fuel Selector Valve	S-1003
7	1 1/4" X 11" Nipple	40-113G11
8	1 1/4" X 90 BM Street Elbow (type 3)	40-116-20
9	1 1/4" X 4 1/2" Nipple	40-113G4.5
10	Pipe Hanger	S-1031
11	Solenoid	S-1004
12	1 1/4" X 7" Nipple	40-113G7
13	Regulator	S-1052
14	1 1/4" X 2" Nipple	40-113G2
15	1 1/4" Coupling	40-103-20
16A	Clear Light Indicator	S-1020A
16B	Red Light Indicator	S-1020B
16C	Green Light Indicator	S-1020C
18	On - Off - Start Switch	S-411
19	Power Cord inc' plug	S-1021
20	Thermostat	S-416
21	Main Relay	S-412
22	Air Proving Switch	S-414
23	Potted Ignition Control	S-415P
24	Rubber Wheel - 8"	S-1022
25	Screen Assembly	S-1019
26	1 H.P. Motor	S-100
27	Long Reach Igniter	S-408A
28	Flame Rod	S-406
29	Fan Blade	S-1001
30	Burner	S-1505
31	1-1/4" 15FT Hose	S54180-20
32	1-1/4" Second Stage Regulator	B31R.125

